



ALL RIGHTS RESERVED. NO PORTION OF THIS PUBLICATION, WHETHER IN WHOLE OR IN PART CAN BE REPRODUCED WITHOUT THE EXPRESS WRITTEN CONSENT OF SPC TECHNOLOGY.

SPC-F005.DWG

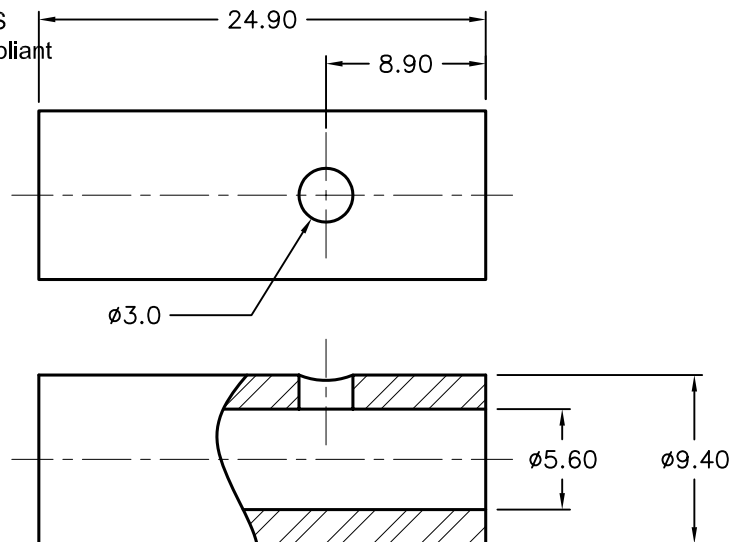
REVISIONS

DOC. NO. SPC-F005 * Effective: 7/8/02 * DCP No: 1398

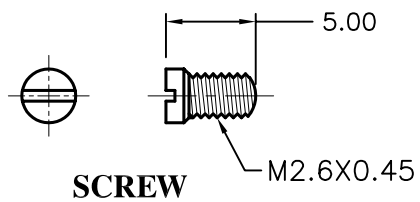
DCP #	REV	DESCRIPTION	DRAWN	DATE	CHECKD	DATE	APPRVD	DATE
1876	A	RELEASED	EO	05/23/06	TL	06/07/06	HO	06/07/06



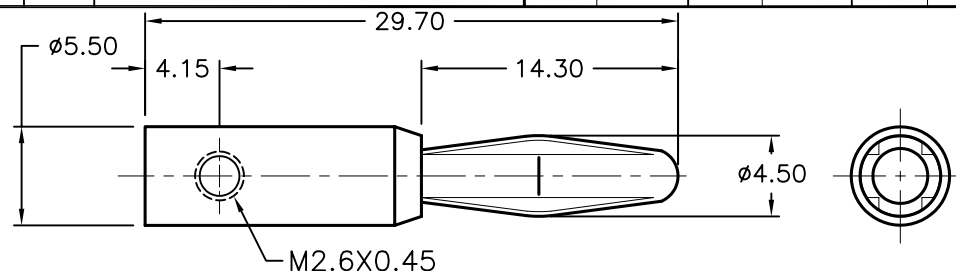
RoHS
Compliant



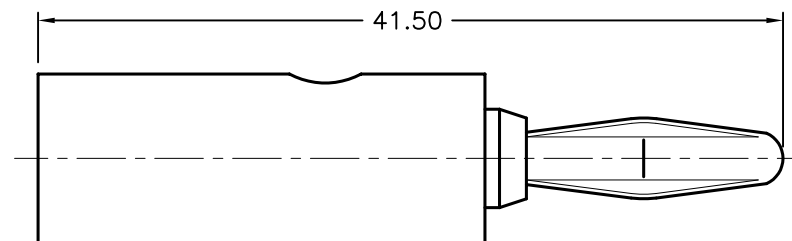
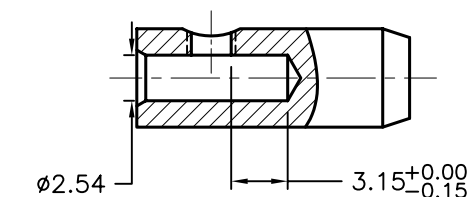
HANDLE



SCREW



BODY



ASSEMBLY

SPC TYPE No.

COLOR

SPC15443

BLACK

SPC15258

GREEN

SPC15432

RED

SPC15210

YELLOW

Material:

1. Body: Brass, Nickel-Plated
2. Four-Leaf Spring: Phosphor Bronze, Nickel-Plated
3. Screw: Brass, Nickel-Plated
4. Handle: ABS

DISCLAIMER:
ALL STATEMENTS AND TECHNICAL INFORMATION CONTAINED HEREIN ARE BASED UPON INFORMATION AND/OR TESTS WE BELIEVE TO BE ACCURATE AND RELIABLE. SINCE CONDITIONS OF USE ARE BEYOND OUR CONTROL, THE USER SHALL DETERMINE THE SUITABILITY OF THE PRODUCT FOR THE INTENDED USE AND ASSUME ALL RISK AND LIABILITY WHATSOEVER IN CONNECTION THEREWITH.

TOLERANCES:

Unless Otherwise
Specified

.X ± 0.2 [0.008]
.XX ± 0.12 [0.005]

DRAWN BY:

EKLAS ODISH

CHECKED BY:

THOMAS LEE

APPROVED BY:

HISHAM ODISH

DATE:

05/23/06

DATE:

06/07/06

DATE:

06/07/06

DRAWING TITLE:

PLUG, BANANA (SIDE SET SCREW), INSULATED

SIZE

A

DWG. NO.

TA-756

ELECTRONIC FILE

TA-756.DWG

REV

A

SCALE: NTS

U.O.M.: mm [INCHES]

SHEET: 1 OF 1