

Surface Mount LEDs

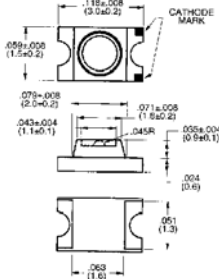
Chicago Miniature's unique vertically integrated facilities can construct optical light pipe solutions to your most demanding challenge. Standard modules range from simulation of a T1 LED up to 12 lights wide with custom applications

CMD11-21 Series SMT LEDs

- Surface Mount Technology
- Tape and Reel Packaged for High-Speed Autoinsertion
 - Convection and Vapor-Phase Reflow Compatible
 - Compact Form Enables High Density Placement
 - Industry Standard 1206 Package

- Leading Edge LED Optoelectronic Performance
- Consistent High Brightness
 - Integral Lensing for Narrow Angle Light Dispersion
 - Bi-Color Available
 - Ideal for Use with Chicago Miniature Bright Pipe Optical Light Pipes

- Exceptional Reliability
- Stringent Process Controls Assure Quality
 - Extensive Qualification Testing to Meet Strictest Requirements
 - Designed to Permit Easy Post-Reflow Solder Joint Inspection



Stock No.	Mfr.'s Type	Emitted Color	Lens Color	Package Type	Lum. Intensity		Fwd. Volt.		EACH*	
					Typ. mcd	mA	Typ.	mA	1-9	10-99
749-2102	CMD11-21VGC/TR8	Green	Clear	Single	7.5	20	2.1	20	.41	.35
749-2103	CMD11-21VVC/TR8	Yellow	Clear	Single	6.0	20	2.0	20	.41	.35
749-2104	CMD11-21VRC/TR8	Red	Clear	Single	6.0	20	2.0	20	.41	.35
749-2105	CMD11-21SRC/TR8	Red	Clear	Single	17.0	20	1.7	20	.48	.42

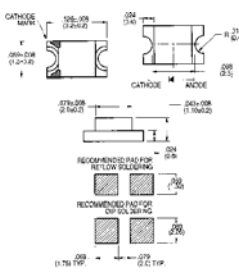
*Also available in full reel quantities.

CMD15-21 Series SMT LEDs

- Surface Mount Technology
- Tape and Reel Packaged for High-Speed Autoinsertion
 - Convection and Vapor-Phase Reflow Compatible
 - Compact Form Enables High Density Placement
 - Industry Standard 1206 Package

- Leading Edge LED Optoelectronic Performance
- Consistent High Brightness
 - Clear and Diffused Lenses
 - Bi-Color Available
 - Ideal for Use with Chicago Miniature Bright Pipe Optical Light Pipes

- Exceptional Reliability
- Stringent Process Controls Assure Quality
 - Extensive Qualification Testing to Meet Strictest Requirements
 - Designed to Permit Easy Post-Reflow Solder Joint Inspection



Stock No.	Mfr.'s Type	Emitted Color	Lens Color	Lum. Intensity		Fwd. Volt.		EACH*	
				Typ. mcd	mA	Typ.	mA	1-9	10-99
749-2014	CMD15-21SRC/TR8	Super Red	Clear	15.0	20	1.7	20	.43	.38
749-2015	CMD15-21VRC/TR8	H.E. Red	Clear	6.0	20	2.0	20	.35	.31
749-2016	CMD15-21VVC/TR8	Yellow	Clear	6.0	20	2.0	20	.35	.31
749-2018	CMD15-21VGC/TR8	Green	Clear	10.0	20	2.1	20	.35	.31
749-2019	CMD15-21UGC/TR8	Green	Clear	12.0	20	2.1	20	.43	.38
749-2020	CMD15-21VRD/TR8	H.E. Red	Red Diffused	4.0	20	2.0	20	.35	.31
749-2021	CMD15-21VGD/TR8	Green	Green Diffused	6.5	20	2.1	20	.35	.31
749-2022	CMD15-21VYD/TR8	Yellow	Yellow Diffused	4.0	20	2.0	20	.35	.31

*Also available in full reel quantities.

CMD12-21 Series SMT LEDs Right Angle Surface Mount LED Lamps

- Surface Mount Technology
- Tape and Reel Packaged for High-Speed Autoinsertion
 - Convection and Vapor-Phase Reflow Compatible
 - Compact Form Enables High Density Placement
 - Right Angle Mount Ability

- Leading Edge LED Optoelectronic Performance
- Consistent High Brightness
 - Ideal for Use with Chicago Miniature Bright Pipe Optical Light Pipes

- Exceptional Reliability
- Stringent Process Controls Assure Quality
 - Extensive Qualification Testing to Meet Strictest Requirements
 - Designed to Permit Easy Post-Reflow Solder Joint Inspection

Stock No.	Mfr.'s Type	Emitted Color	Lens Color	Package Type	Lum. Intensity		Forward Voltage		EACH*	
					Typ. mcd	mA	Typ.	Max. mA	1-9	10-99
749-2106	CMD12-21SRC/TR8	Red	Clear	Single	12.4	20	1.7	2.4	20	.59 .50
749-2107	CMD12-21VRC/TR8	H.E. Red	Clear	Single	5.0	20	2.0	2.8	20	.46 .39
749-2108	CMD12-21VVC/TR8	Yellow	Clear	Single	3.0	20	2.0	2.8	20	.46 .39
749-2109	CMD12-21VGC/TR8	Green	Clear	Single	8.8	20	2.1	2.8	20	.46 .40
749-2110	CMD12-21UGC/TR8	Green	Clear	Single	14.9	20	2.1	2.8	20	3.33 2.72

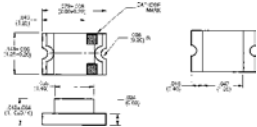
*Also available in full reel quantities.

CMD17-21 Series SMT LEDs

- Surface Mount Technology
- Tape and Reel Packaged for High-Speed Autoinsertion
 - Convection and Vapor-Phase Reflow Compatible
 - Compact Form Enables High Density Placement
 - Industry Standard 0805 Package

- Leading Edge LED Optoelectronic Performance
- Consistent High Brightness
 - Ideal for Use with Chicago Miniature Bright Pipe Optical Light Pipes

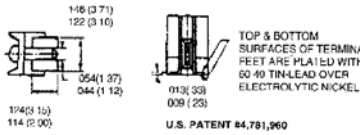
- Exceptional Reliability
- Stringent Process Controls Assure Quality
 - Extensive Qualification Testing to Meet Strictest Requirements
 - Permits Easy Post-Reflow Solder Joint Inspection



Stock No.	Mfr.'s Type	Emitted Color	Lens Color	Lum. Intensity		Fwd. Volt.		EACH*	
				Typ. mcd	mA	Typ.	mA	1-9	10-99
749-2027	CMD17-21SRC/TR8	Super Red	Clear	45.0	20	1.7	20	.43	.38
749-2028	CMD17-21VRC/TR8	H.E. Red	Clear	13.0	20	2.0	20	.35	.31
749-2029	CMD17-21VVC/TR8	Yellow	Clear	12.0	20	2.0	20	.35	.31
749-2030	CMD17-21VGC/TR8	Green	Clear	35.0	20	2.1	20	.35	.31
749-2031	CMD17-21UGC/TR8	Green	Clear	50.0	20	2.1	20	.43	.37
749-2032	CMD17-21VRD/TR8	H.E. Red	Red Diffused	3.0	20	2.0	20	.35	.31
749-2033	CMD17-21VYD/TR8	Yellow	Yellow Diffused	4.0	20	2.0	20	.35	.31
749-2034	CMD17-21VGD/TR8	Green	Green Diffused	5.0	20	2.1	20	.35	.31

*Also available in full reel quantities.

Series 6200T Bright★Angles™ Sub-Miniature SMT LED Assemblies



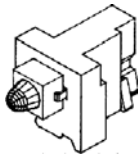
Designed the model 6200 series, these devices position LEDs for easy visibility, particularly in applications where boards are mounted in parallel close to one another. 6200 series surface mount LEDs are available in red, amber, green and yellow colors. 6200 series LEDs are designed and packaged to meet the requirements of automated surface mount production lines. These devices will withstand processing temperatures of either IR or vapor-phase reflow, and are compatible with most common fluxes and cleaning agents. **Housing:** Black polyphenylene sulfide, UL 94V-0. Also available in LC, 5 V and 5 VLC assemblies.

Stock No.	Mfr.'s Type	Emitted Color	Lens Color	Lum. Intensity		Fwd. Voltage		EACH*	
				Typ. mcd	mA	Typ.	mA	1-9	10-99
749-2000	6200T1	Red	Red	5.0	10	2.2	10	1.35	1.19
749-2001	6200T3	Amber	Amber	5.0	10	2.0	10	1.35	1.19
749-2002	6200T5	Green	Green	4.0	10	2.3	10	1.35	1.19
749-2003	6200T7	Yellow	Yellow	3.8	10	2.2	10	1.35	1.19

*Also available in full reel quantities.

Series 6255T Bright★Angles™ Sub-Miniature SMT LED Assemblies

Full surface mount reflow compatibility. Wide view angle and super brite output. Direct optics, no bends or losses. Ideal drop-in replacement for Dialight 591 series prism. Black housing provides high contrast. UL 94V-0 rated housing.



Stock No.	Mfr.'s Type	Emitted Color	Lens Color	Lum. Intensity		Fwd. Voltage		EACH*	
				Typ. mcd	mA	Typ.	mA	1-9	10-99
749-2004	6255T1	Red	Red	5.0	10.0	2.2	10.0	1.37	1.17
749-2005	6255T3	Amber	Amber	5.0	10.0	2.0	10.0	1.37	1.17
749-2006	6255T5	Green	Green	4.0	10.0	2.3	10.0	1.37	1.17
749-2007	6255T7	Yellow	Yellow	3.8	10.0	2.2	10.0	1.37	1.19
749-2008	6255T1-5V	Red	Red	0.5	2.0	1.8	2.0	1.35	1.19
749-2009	6255T3-5V	Amber	Amber	1.2	2.0	1.8	2.0	1.51	1.29
749-2010	6255T5-5V	Green	Green	0.5	2.0	1.9	2.0	1.51	1.29
749-2011	6255T1LC	Red	Red	5.0	9.6	5.0	9.6	1.58	1.35
749-2012	6255T5LC	Green	Green	5.0	10.0	5.0	10.0	1.58	1.35
749-2013	6255T7LC	Yellow	Yellow	5.0	10.0	5.0	10.0	1.58	1.35

*Also available in full reel quantities.

For Fast, Dependable Service, Make Just One Call — 1-800-433-5700

ALLIED ► 535