

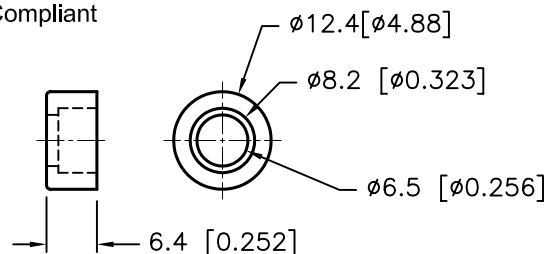
REVISIONS

DOC. NO. SPC-F005 * Effective: 7/8/02 * DCP No: 1398

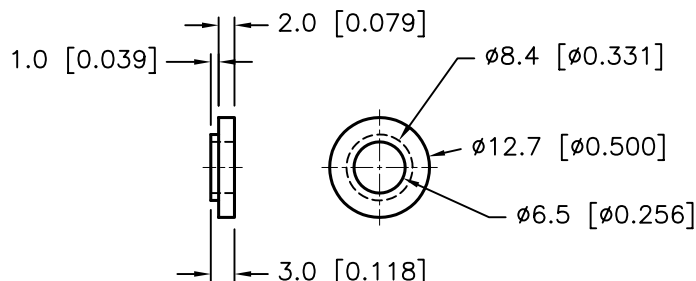
DCP #	REV	DESCRIPTION	DRAWN	DATE	CHECKD	DATE	APPRVD	DATE
1876	A	RELEASED	EO	05/23/06	TL	06/07/06	HO	06/07/06
1921	B	Update Specification	YA	8/7/06	HO	8/7/06	HO	8/7/06



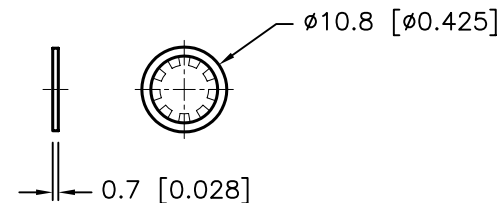
RoHS
Compliant



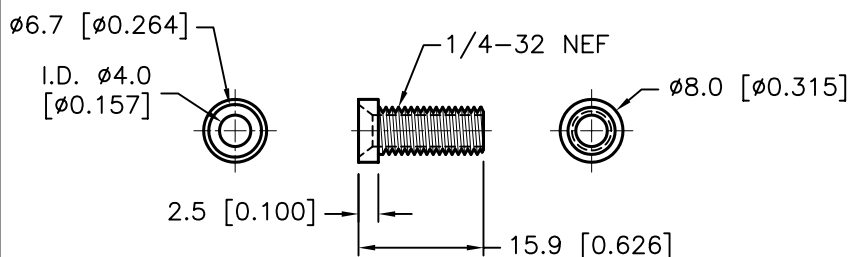
INSULATED HEAD



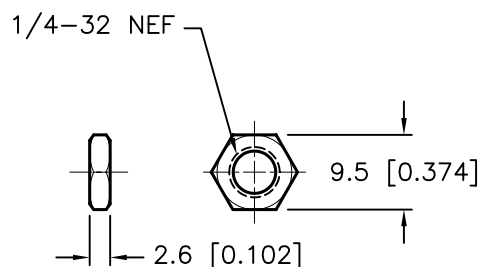
INSULATED WASHER



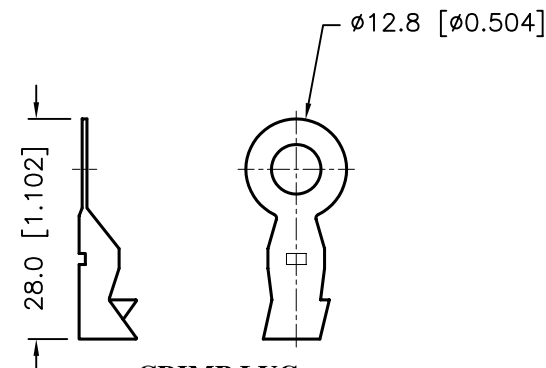
LOCK WASHER



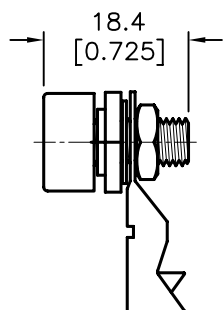
THREADED BODY



NUT



CRIMP LUG



ASSEMBLY

SPECIFICATIONS:

1. Threaded Body: Brass, Nickel-Plated
2. Insulated Head: ABS (Max. Heat Deflection Temperature: 89°C)
3. Insulated Washer: ABS
4. Lock Washer: Steel, Nickel-Plated
5. Crimp Lug: Brass, Nickel-Plated
6. Nut: Brass, Nickel-Plated
7. Max Ratings: 1KVAC @ 15A

SPC TYPE No.

COLOR

SPC15206

BLACK

SPC15188

RED

DISCLAIMER:
ALL STATEMENTS AND TECHNICAL INFORMATION CONTAINED HEREIN ARE BASED UPON INFORMATION AND/OR TESTS WE BELIEVE TO BE ACCURATE AND RELIABLE. SINCE CONDITIONS OF USE ARE BEYOND OUR CONTROL, THE USER SHALL DETERMINE THE SUITABILITY OF THE PRODUCT FOR THE INTENDED USE AND ASSUME ALL RISK AND LIABILITY WHATSOEVER IN CONNECTION THEREWITH.

TOLERANCES:

Unless Otherwise Specified

.X ±0.2 [0.008]

.XX ±0.12 [0.005]

DRAWN BY:

EKLAS ODISH

CHECKED BY:

THOMAS LEE

APPROVED BY:

HISHAM ODISH

DATE:

05/23/06

DATE:

06/07/06

DATE:

06/07/06

DRAWING TITLE:

INSULATED BANANA JACK

SIZE

A

DWG. NO.

TA-759

ELECTRONIC FILE

TA-759.DWG

REV

B

SCALE: NTS

U.O.M.: mm [INCHES]

SHEET: 1 OF 1