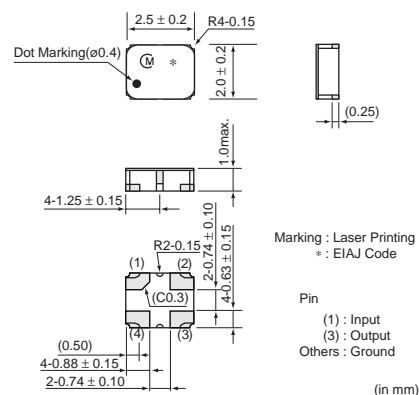


SAW Filters For GPS RF

SAFSE1G57KA0T05

Features

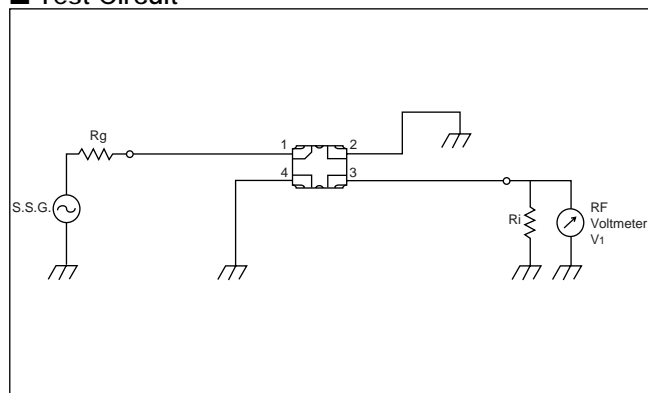
1. Low Insertion Loss (1.5 dB max.)
2. High Attenuation (at 1750 to 1990MHz ; 35 dB min.)
3. Small SMD package (2520 package)



Insertion Loss (within 1574 to 1577MHz)	Absolute Attenuation								Ripple Deviation (within 1574 to 1577MHz)	VSWR (within 1574 to 1577MHz)	Input / Output Impedance (nominal)
	within 0.1 to 960 MHz	within 1350 to 1360 MHz	within 1429 to 1525 MHz	within 1626 to 1661 MHz	within 1850 to 1910 MHz	within 1920 to 1980 MHz	within 2110 to 2170 MHz	within 2400 to 2500 MHz			
1.6dB max.	28dB min.	32dB min.	32dB min.	30dB min.	35dB min.	35dB min.	35dB min.	30dB min.	0.7dB max.	1.6 max.	50 ohm

Operating Temperature Range: -30 to +85 °C

Test Circuit



Frequency Characteristics

