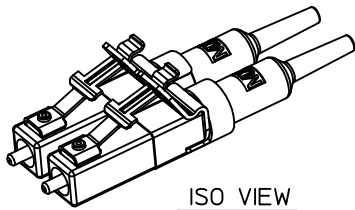
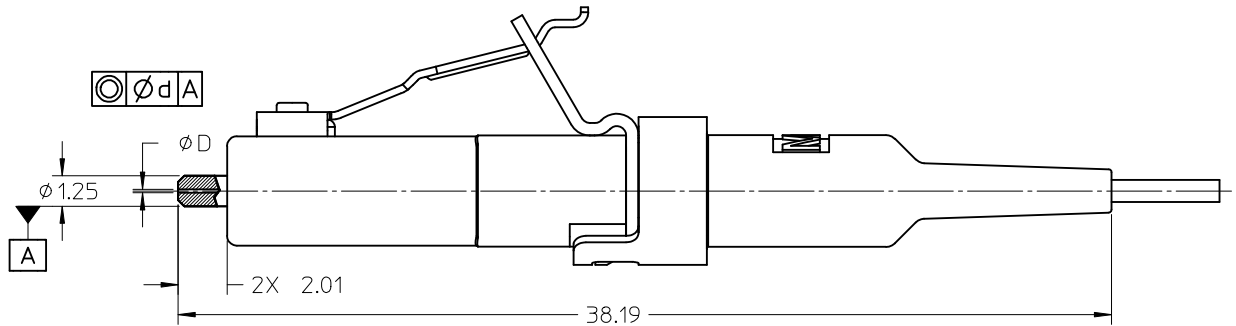
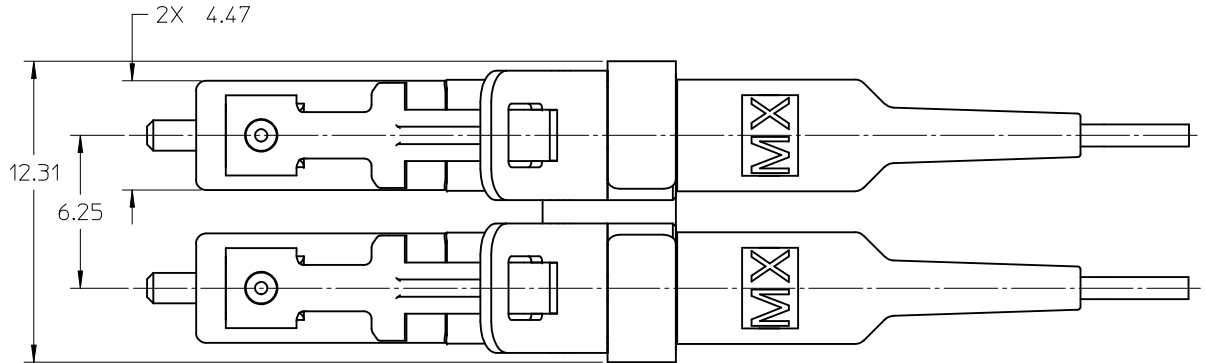
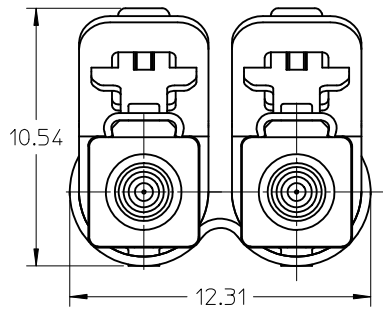


CONNECTOR P/N	ØD (µm)	Ød (µm)	BOOT COLOR	CABLE TYPE
106397-2202	125.50 ^{+0.50} ₀	0.5	BLUE	SM
106397-2402	127.0 ^{+3.00} ₀	3.0	WHITE	MM



ISO VIEW
SCALE 2:1



NOTES:

1. ALL DIMENSIONS ARE FOR REFERENCE ONLY.
2. DUST CAPS ARE NOT SHOWN.

ENTER DESCRIPTION EC NO: MF2010-0307 DRAWN: JSZEWCHYK CHKD: JSZEWCHYK APPR: IGUMIN A		2010/01/25		2010/01/18		2010/01/25		QUALITY SYMBOLS		GENERAL TOLERANCES (UNLESS SPECIFIED)		DIMENSION STYLE		SCALE		DESIGN UNITS		THIRD ANGLE PROJECTION	
		DESCRIPTION		▽=0		▽=0				mm		INCH		DRAWN BY		DATE		TITLE	
				4 PLACES		± ---		± ---				JSZEWCHYK		2010/01/11		LC2+ DUPLEX CONNECTOR		FOR BARE FIBER	
				3 PLACES		± ---		± ---				CHECKED BY		DATE					
				2 PLACES		± ---		± ---				WCHEN		2009/05/08					
				1 PLACE		± ---		± ---				APPROVED BY		DATE					
												IGUMIN		2010/01/25		molex		MOLEX INCORPORATED	
												ANGULAR ±1/2°							
												DRAFT WHERE APPLICABLE		MATERIAL NO.		DOCUMENT NO.		SHEET NO.	
												MUST REMAIN WITHIN DIMENSIONS		SEE TABLE		SD-106397-2X02		1 OF 1	
REV												SIZE		THIS DRAWING CONTAINS INFORMATION THAT IS PROPRIETARY TO MOLEX INCORPORATED AND SHOULD NOT BE USED WITHOUT WRITTEN PERMISSION					
		B																	

Mouser Electronics

Authorized Distributor

Click to View Pricing, Inventory, Delivery & Lifecycle Information:

Molex:

106397-2202