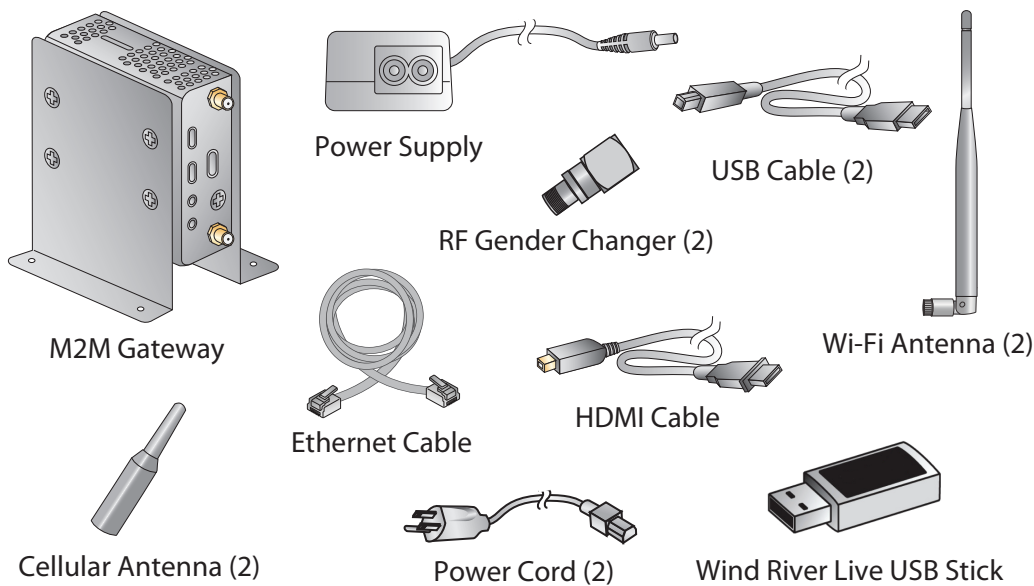


## 1 Verify your Kit Contents



## Quick Start Guide

### Digi M2M Solution Builder Kit

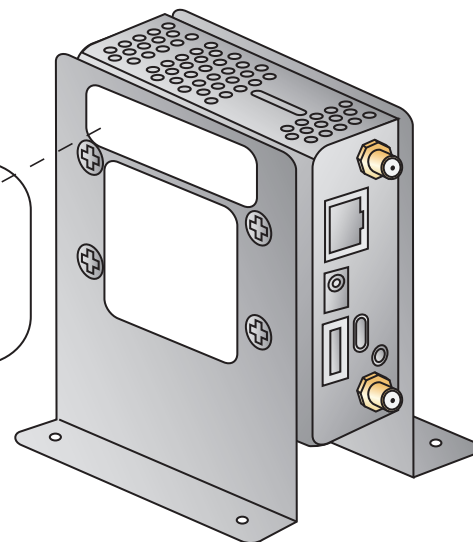
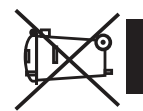
90002177\_B

## 2 Record your MAC Address

Record the MAC address of your M2M Gateway's Ethernet port. It is shown on a label attached on the side of the enclosure.

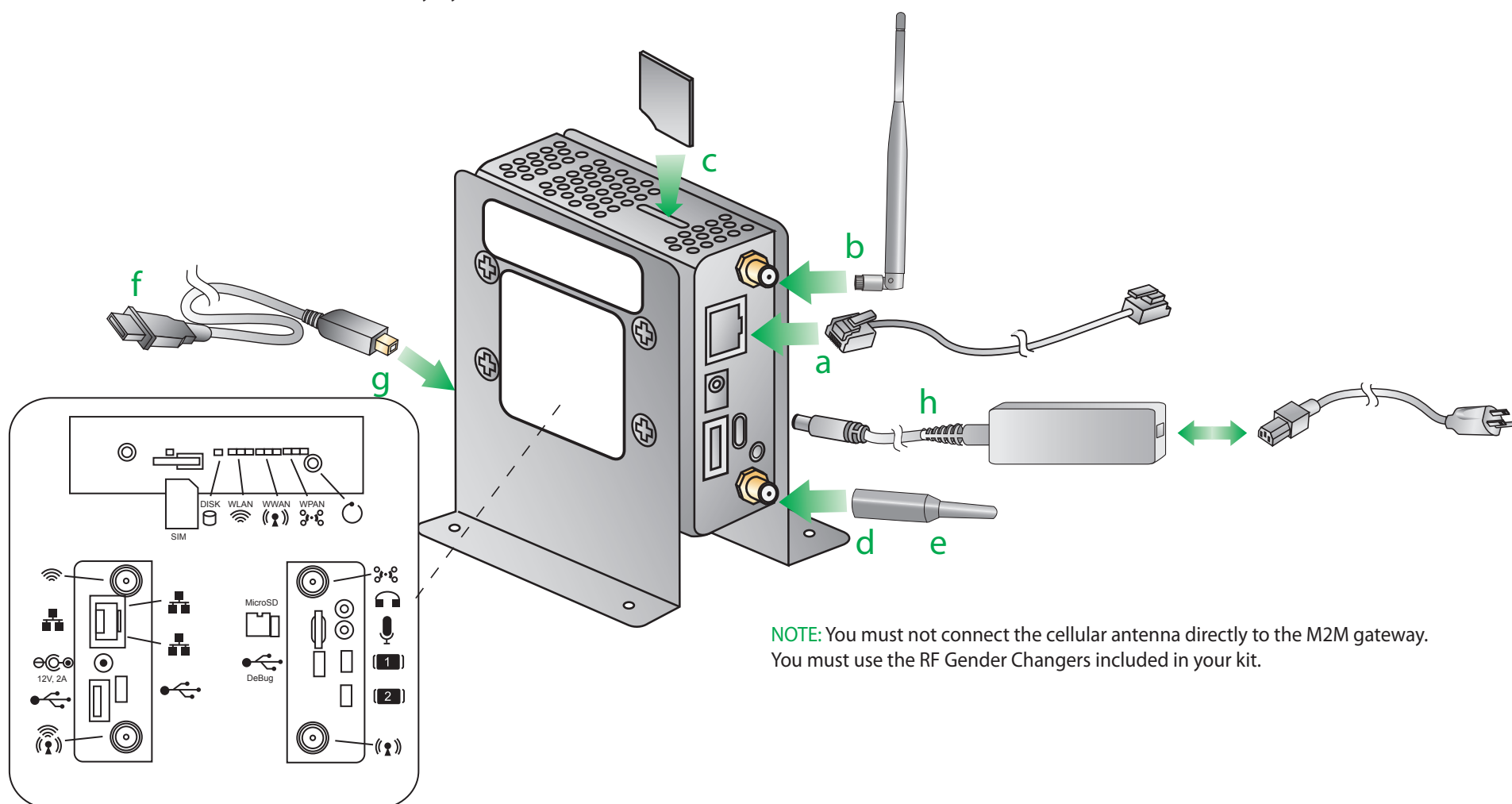
MAC: \_\_\_\_\_

S/N 806-022-000147  
LAN 00-B3-38-6E-E1-DE  
WLAN  
WPAN 00-12-4B-00-01-59-D0-EE



## 3 Connect your M2M Gateway

- Connect Ethernet cable to M2M Gateway Ethernet connector.**
- Connect Wi-Fi/ Bluetooth antennas to upper antenna connectors.
- Insert SIM card in SIM card slot.  
**NOTE:** This step is required only if you have a cellular SIM card. If you do not have a cellular SIM card, please skip to step "f".
- Attach RF Gender Changers to cellular antennas.  
**NOTE:** Cellular antennas are needed only if you have a SIM card.
- Connect cellular antennas (with RF Gender Changers) to lower antenna connectors.
- Connect HDMI cable to HDMI monitor.  
**NOTE:** This step is required only if you have an HDMI display. If you do not have an HDMI display, please skip to step "h".
- Insert HDMI cable into primary HDMI port.  
**NOTE:** The primary HDMI port is the upper port on the M2M Gateway.
- Connect the power cord to the appropriate power supply and plug into M2M Gateway power connector.**



**NOTE:** You must not connect the cellular antenna directly to the M2M gateway. You must use the RF Gender Changers included in your kit.

**Continue on to next page...**

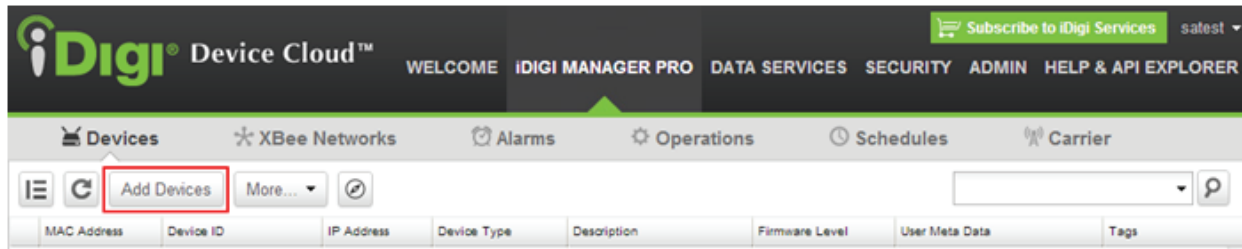
## 4 Log in to the iDigi Device Cloud

- If you do not have an account on the US iDigi Device Cloud, navigate to <http://my.idigi.com> and click the “**Are you a new user?**” link to create a free account.
- Log in to your iDigi Device Cloud account.

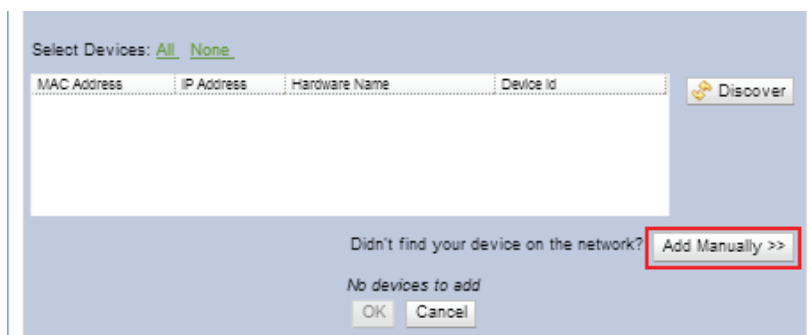
**NOTE:** When creating your iDigi Device Cloud account, you must choose the US Device Cloud regardless of your location.

## 5 Add your M2M Gateway to iDigi

- Log in to your iDigi Device Cloud account, and navigate to the **Devices** page by selecting the iDigi Manager Pro tab. Click the **Add Devices** button within the toolbar displayed.



- Your M2M Gateway needs to be manually added to your iDigi device inventory. Click the **Add Manually** button to begin adding your device manually.



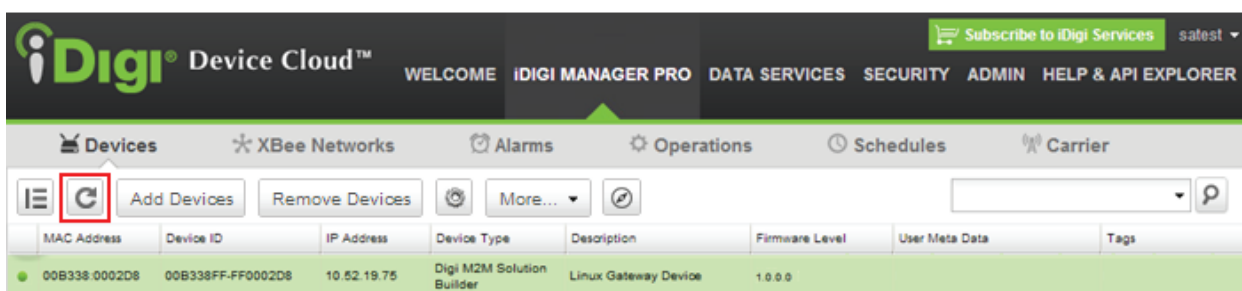
- Enter your recorded MAC Address (from section 2).



- Once the MAC address has been entered, click the **Add** button. Your M2M Gateway will appear within the window. Click **OK** to finish adding your device.

- Within the Devices page toolbar, click the **Refresh** button. Your M2M Gateway's status will appear as 'Connected' (as indicated by the green icon).

**NOTE:** It may initially take up to 60 seconds for the M2M Gateway to connect. If your M2M Gateway does not appear after refreshing 60 seconds after power up, please contact the technical support experts at [www.digi.com/support/](http://www.digi.com/support/) or by telephone at 877-912-3444 (US only).



**Congratulations! You are now successfully connected to the iDigi Device Cloud!**



### What's Next ?

Browse to [www.digi.com/quickstartm2m](http://www.digi.com/quickstartm2m) to explore the full capabilities of your Digi M2M Solution Builder Kit!