

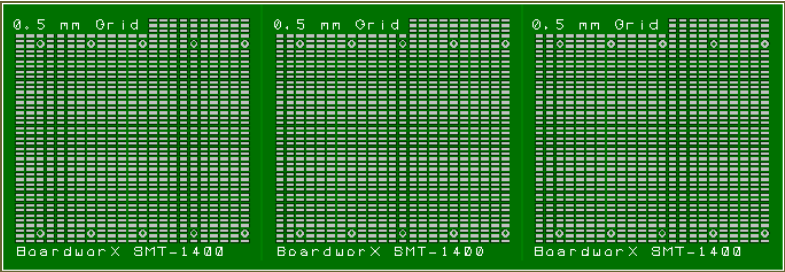
Information

Features:

- Convenient size for smaller circuit development
- Fine pitches accommodated down to 0.5 mm
- Two grid spacing's to accommodate a larger number of parts more easily. (different grid spacing's on each side (0.5 mm and 0.635 mm)
- Allows entire design to be done in surface mount on one board independent of package types
- Solder mask for easier wiring
- Plated through holes for convenient wiring

Item Number:
SMT-1400

SMT-1400 Mini Board



Description:

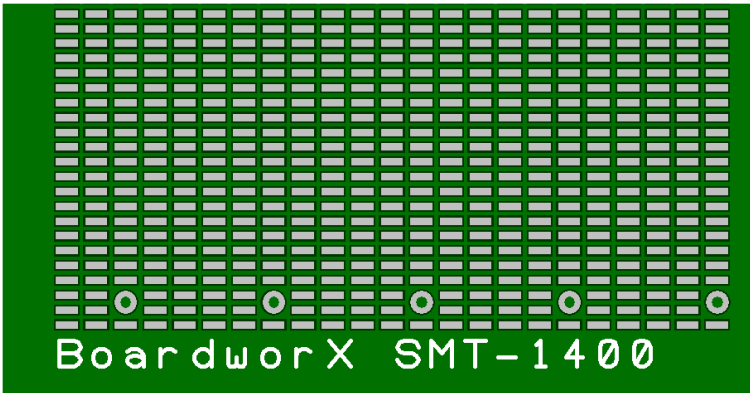
The SMT-1400 board provides an SMT grid that is sized down for convenience. Considering that most surface mount parts have shrunk significantly compared to their through hole versions, it is natural that they will take up less room. This product addresses the designs that only need a few components.

The 1400 adds solder mask for easier wiring and additional plated through holes for convenient wire routing on both sides of the board.

When one must quickly “prototype” a quick fix to an existing larger design and attach it to the larger board or system The SMT-1400 provides another useful platform for this work.

The boards are supplied as 3 boards on a panel and easily separated with v—scores.

Close Up sample of board



Summary and Specs

Product Summary:

The SMT-1400 is a scaled down version of the SMT-1100 for small applications that require reduced real estate.

Specifications:

Dimensions:

1“ X 0.950”

Grid Top:

0.5 mm

Grid Bottom:

0.635 mm (0.025 in)

Material:

FR-4

Finish:

Lead Free Solder/Solder Mask

Pad Shape:

Rectangular

Certification:

IPC Class 2