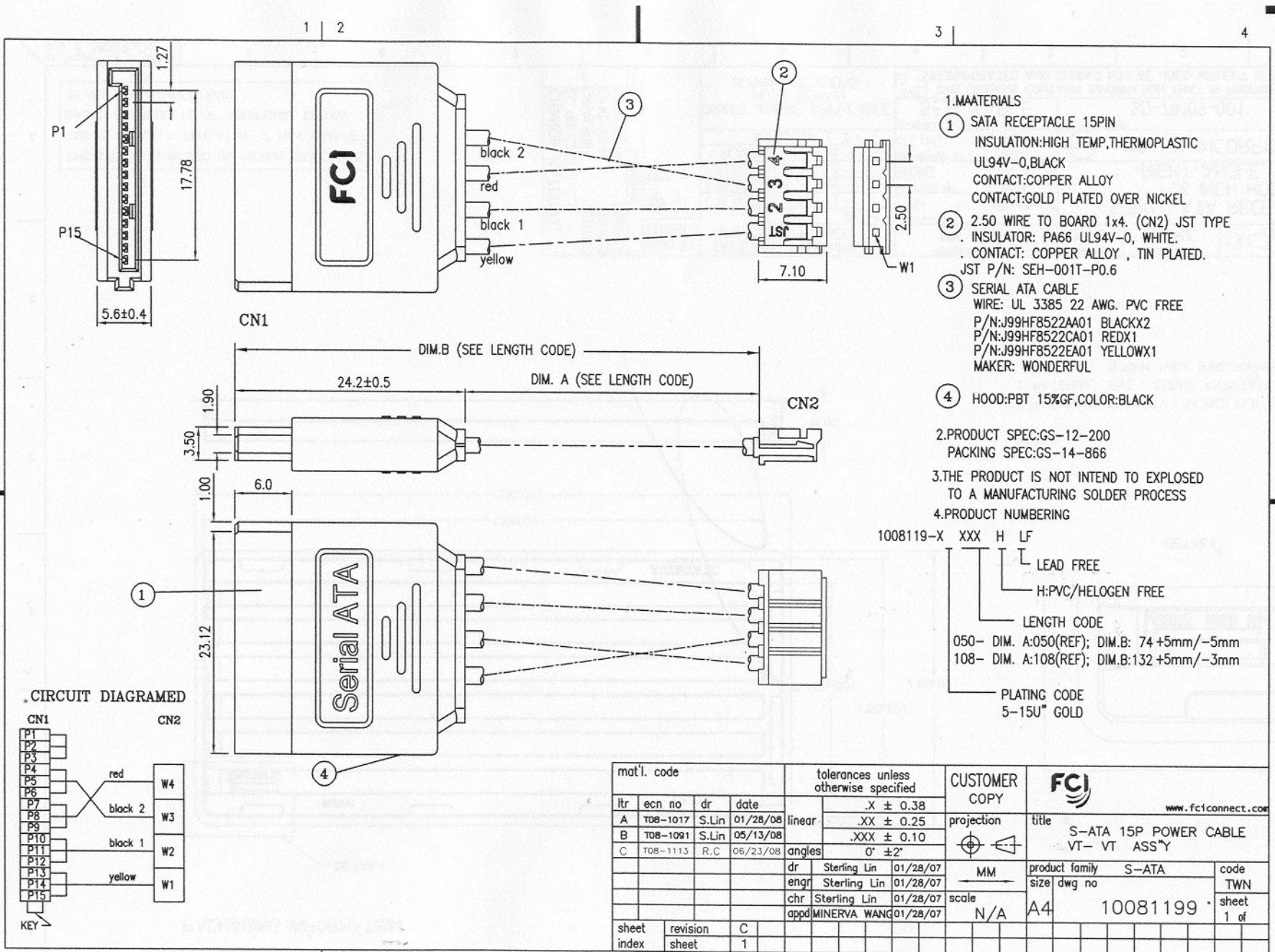


TOUS DROITS STRICTEMENT RESERVES. REPRODUCTION OU COMMUNICATION A DES TIERS INTERDITE SANS QUELQUE FORME QUE CE SOIT SANS AUTORISATION ECRITE DU PROPRIETAIRE. PROPRIETE DE C FCI. DROITS DE REPRODUCTION FCI.



ALL RIGHTS STRICTLY RESERVED. REPRODUCTION OR ISSUE TO THIRD PARTIES IN ANY FORM WHATSOEVER IS NOT PERMITTED WITHOUT WRITTEN AUTHORITY FROM THE PROPRIETOR. PROPERTY OF FCI. COPYRIGHT FCI.



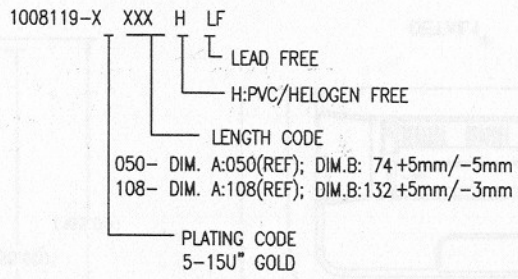
1. MATERIALS

- ① SATA RECEPTACLE 15PIN  
INSULATION: HIGH TEMP, THERMOPLASTIC  
UL94V-0, BLACK  
CONTACT: COPPER ALLOY  
CONTACT: GOLD PLATED OVER NICKEL
- ② 2.50 WIRE TO BOARD 1x4. (CN2) JST TYPE  
INSULATOR: PA66 UL94V-0, WHITE.  
CONTACT: COPPER ALLOY, TIN PLATED.  
JST P/N: SEH-001T-P0.6
- ③ SERIAL ATA CABLE  
WIRE: UL 3385 22 AWG. PVC FREE  
P/N: J99HF8522AA01 BLACKX2  
P/N: J99HF8522CA01 REDX1  
P/N: J99HF8522EA01 YELLOWX1  
MAKER: WONDERFUL
- ④ HOOD: PBT 15%GF, COLOR: BLACK

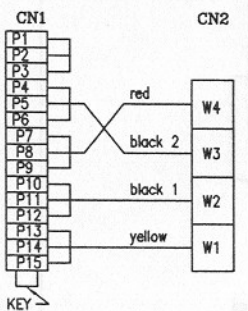
2. PRODUCT SPEC: GS-12-200  
PACKING SPEC: GS-14-866

3. THE PRODUCT IS NOT INTEND TO EXPLOSD TO A MANUFACTURING SOLDER PROCESS

4. PRODUCT NUMBERING



CIRCUIT DIAGRAMED



mat'l. code				tolerances unless otherwise specified		CUSTOMER COPY		FCI	
ltr	ecn no	dr	date	linear	.X ± 0.38	projection	www.fciconnect.com		
A	T08-1017	S.Lin	01/28/08		.XX ± 0.25	MM	title		
B	T08-1091	S.Lin	05/13/08		.XXX ± 0.10		S-ATA 15P POWER CABLE		
C	T08-1113	R.C	06/23/08	angles	0° ±2°	scale	product family		code
				dr	Sterling Lin	01/28/07	S-ATA		TWN
				enrg	Sterling Lin	01/28/07	size dwg no		sheet
				chr	Sterling Lin	01/28/07	10081199		1 of
				appd	MINERVA WANG	01/28/07			
sheet index	revision sheet	C	1						

ACAD