

Distributed by:

**JAMECO**<sup>®</sup>  
ELECTRONICS

**www.Jameco.com ♦ 1-800-831-4242**

The content and copyrights of the attached  
material are the property of its owner.

Jameco Part Number 2036242

DIMENSIONS ARE IN INCHES		UNLESS OTHERWISE NOTED	TOLERANCES ARE
ONE PLACE DECIMAL : .1 [2.54]	THREE PLACE DECIMAL : .010 [.25]	ANGLES ±	
TWO PLACE DECIMAL : .01 [.25]	FOUR PLACE DECIMAL : .0020 [.05]		

TITLE:	DWG NO.
.100 BOTTOM MOUNT SOCKET ASSEMBLY	BSW-1XX-XX-X-X-X
	SHEET 1 OF 1

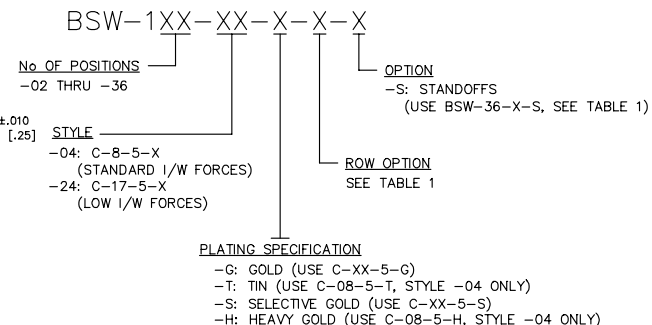
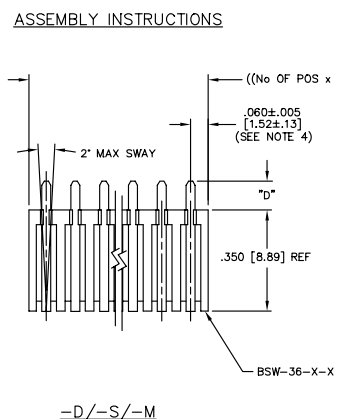
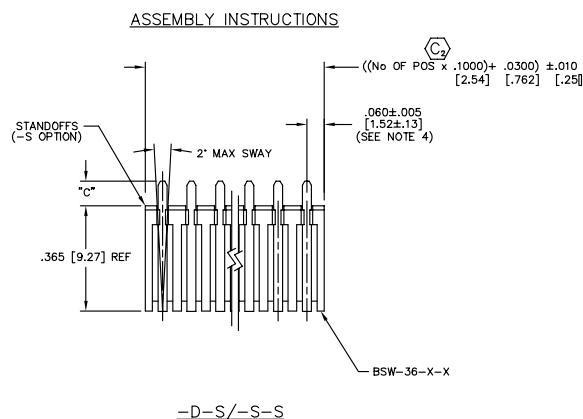
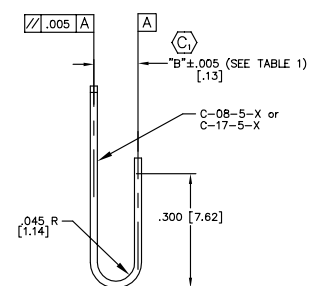
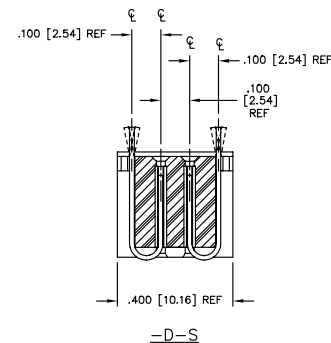
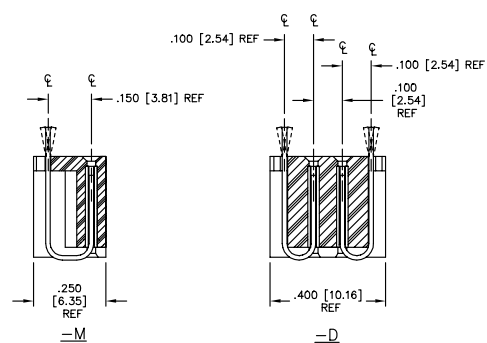
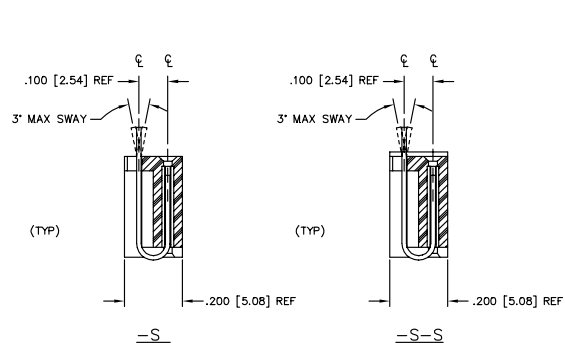


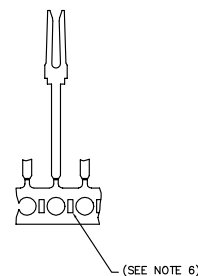
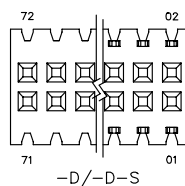
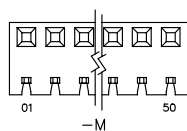
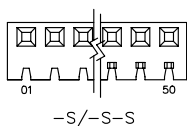
TABLE 1				
ROW	"B"	"C"	"D"	USE BODY
-D	.100 [2.54]	-	.165 [4.19]	BSW-36-D
-S	.100 [2.54]	-	.170 [4.32]	BSW-36-S
-M	.150 [3.81]	-	.125 [3.18]	BSW-36-M
-D-S	.100 [2.54]	.150 [3.81]	-	BSW-36-D-S
-S-S	.100 [2.54]	.150 [3.81]	-	BSW-36-S-S



CONTACT  
SCALED 1.5:1  
CRITICAL 1 DIMENSION MUST BE VERIFIED AT  
BEGINNING, MIDDLE, AND END OF EACH LOT.  
RESULTS OF THESE INSPECTIONS MUST  
BE DOCUMENTED ON THE SHOP ORDER.

## FINAL ASSEMBLY

## POSITION NUMBER LAYOUT

DO NOT SCALE  
FROM THIS PRINT

## NOTES

1. MAXIMUM ALLOWABLE BOW: .003 [.08] INCH/INCH AFTER ASSEMBLY.
2. CONTACT PUSHOUT FORCE: 3 lbs. MINIMUM.
3. (C) REPRESENTS A CRITICAL DIMENSION.
4. "END WALLS" AFTER CUTTING SHOULD BE .023±.005.
5. MAX OUT FLASH .010.
6. THE IDENTIFICATION SIDE IS TO BE DOWN OR AGAINST THE FORM TOOLING.

**PROPRIETARY NOTE**  
THIS DOCUMENT CONTAINS INFORMATION  
CONFIDENTIAL AND PROPRIETARY TO  
SAMTEC INC. AND SHALL NOT BE  
REPRODUCED OR TRANSMITTED IN  
ANY FORM OR BY ANY MEANS  
ELECTRONIC OR MECHANICAL,  
INCLUDING PHOTOCOPYING, RECORDING,  
OR BY ANY INFORMATION STORAGE  
AND RETRIEVAL SYSTEM, WITHOUT THE  
WRITTEN CONSENT OF SAMTEC INC.

**samtec**

520 PARK EAST BLVD. NEW ALBANY, INDIANA 47150  
PHONE (812) 944-6733 P.O. BOX 1147  
CODE 55322

MADE BY: PURVIS 3-31-98

BSW-1XX-XX-X-X-X  
SHEET 1 OF 1