

Series: Panther

Description: MiMo LTE, MiMo WiFi, GNSS  
Vehicle Mount Antenna

PART NUMBER: GPSMB50xx



### Features:

- Supports MIMO Cellular LTE 698-960/1695-2170/2300-2700/2900-3600MHz
- Supports MIMO WiFi and DSRC 2400-2500MHz/4900-5925MHz
- Supports Beidou, GPS, Galileo, GLONASS
- Direct Mount and optional Magnetic Mount features
- See GPSMBMM for magnetic mount details
- **GPSMB501/GPSMB501C** Black and **GPSMB502** White

### Applications:

- Telematics
- Location based services
- First Responders(Police, Ambulance, Fire)
- Government
- Energy(Utility Vehicles)
- Fleet Management

All dimensions are in mm / inches

Issue: 1711

In the effort to improve our products, we reserve the right to make changes judged to be necessary.

CONFIDENTIAL AND PROPRIETARY INFORMATION

This document contains confidential and proprietary information of Pulse Electronics, Inc. (Pulse) and is protected by copyright, trade secret and other state and federal laws. Its receipt or possession does not convey any rights to reproduce, disclose its contents, or to manufacture, use or sell anything it may describe. Reproduction, disclosure or use without specific written authorization of Pulse is strictly forbidden.

For more information:

Pulse Worldwide Headquarters  
15255 Innovation Drive #100  
San Diego, CA 92128  
USA  
Tel:1-858-674-8100

Pulse/Larsen Antennas  
18110 SE 34<sup>th</sup> St Bldg 2 Suite 250  
Vancouver, WA 98683  
USA  
Tel: 1-360-944-7551

Europe Headquarters  
Pulse GmbH & Do, KG  
Zeppelinstrasse 15  
Herrenberg, Germany  
Tel: 49 7032 7806 0

Pulse (Suzhou) Wireless Products Co, Inc.  
99 Huo Ju Road(#29 Bldg,4<sup>th</sup> Phase  
Suzhou New District  
Jiangsu Province, Suzhou 215009 PR China  
Tel: 86 512 6807 9998



# Description: MiMo LTE, MiMo WiFi, GNSS Vehicle Mount Antenna

**Series: Panther**

**PART NUMBER: GPSMB50xx**

## ELECTRICAL SPECIFICATIONS

Frequency (LTE)	698 - 960 / 1695 – 2170 / 2300 - 2700 / 2900 – 3600	MHz
Frequency (WiFi&DSRC)	2400 – 2500/ 4900 – 5925	MHz
Frequency (Beidou, GPS, Galileo, Glonass)	1561.098±2.046/ 1575.42±1.023/ 1602.5625±4	MHz
Nominal Impedance	50	Ω
VSWR (LTE)	< 1.5	
VSWR (WiFi&DSRC)	< 1.4	
Gain* (LTE antenna, < 2170 MHz)	4	dBi ± 2.5 dB
Gain* (LTE antenna, > 2170 MHz)	5	dBi ± 2 dB
Gain* (WiFi antenna, < 2500 MHz)	4.5	dBi ± 1.5 dB
Gain* (WiFi antenna, > 4900 MHz)	5	dBi ± 2 dB
Isolation LTE to LTE **	15 or better	dB
Isolation WiFi to WiFi **	40 or better	dB
GNSS antenna RHCP gain	1	dBic ± 2 dB
LNA gain	30	dB ± 2 dB
Noise Figure	2.5 (cascade)	dB
Current	8	mA ± 2 mA
V <sub>dc</sub>	3-5	V <sub>dc</sub>
LNA and filter attenuation		
	@ 824 MHz	70 dB
	@ 960 MHz	65 dB
	@ 1710 MHz	60 dB
	@ 2170 MHz	65 dB

\*Measured on 2ft GND plane and with 4 inch cables

\*\*In free space with 17ft cables

Issue: 1711

In the effort to improve our products, we reserve the right to make changes judged to be necessary.

CONFIDENTIAL AND PROPRIETARY INFORMATION

This document contains confidential and proprietary information of Pulse Electronics, Inc. (Pulse) and is protected by copyright, trade secret and other state and federal laws. Its receipt or possession does not convey any rights to reproduce, disclose its contents, or to manufacture, use or sell anything it may describe. Reproduction, disclosure or use without specific written authorization of Pulse is strictly forbidden.

**Description: MiMo LTE, MiMo WiFi, GNSS  
Vehicle Mount Antenna****Series: Panther****PART NUMBER: GPSMB50xx****ELECTRICAL SPECIFICATIONS**

Pulse P/N	GPSMB501	GPSMB502	GPSMB501C
Cable NO.	5	5	5
Operating Bands	2-LTE + 2-WiFi + 1-GPS/GNSS	2-LTE + 2-WiFi + 1-GPS/GNSS	2-LTE + 2-WiFi + 1-GPS/GNSS
Cable length	17FT	17FT	10FT
Connector	LTE: SMA(M), WiFi: RPSMA(M), GPS: SMA(M)	LTE: SMA(M), WiFi: RPSMA(M), GPS: SMA(M)	LTE: SMA(M), WiFi: RPSMA(M), GPS: SMA(M)
Cable Color	Black	White	Black
Assembly option	1. Assembly directly with nut 2. Magnetic mount base P/N:GPSMBMM		

Issue: 1711

In the effort to improve our products, we reserve the right to make changes judged to be necessary.

CONFIDENTIAL AND PROPRIETARY INFORMATION

This document contains confidential and proprietary information of Pulse Electronics, Inc. (Pulse) and is protected by copyright, trade secret and other state and federal laws. Its receipt or possession does not convey any rights to reproduce, disclose its contents, or to manufacture, use or sell anything it may describe. Reproduction, disclosure or use without specific written authorization of Pulse is strictly forbidden.

**Description: MiMo LTE, MiMo WiFi, GNSS  
Vehicle Mount Antenna****Series: Panther****PART NUMBER: GPSMB50xx****MECHANICAL SPECIFICATIONS**

Plastic radome	ABS/PC Material UV Stabilized, UL-94HB
Color	GPSMB501:Black GPSMB501C: Black GPSMB502: White
Ingress Protection	IP67
Weight	GPSMB501:~1340 g GPSMB502: ~1340 g FPSMB501C: ~ 1320 g
Fixing system	Roof mounting (Also Magnet mounting accessory available, GPSMBMM) Recommended fastening torque 1518ft-lb (20-25Nm).

**ENVIRONMENTAL SPECIFICATIONS**

Operating temperature	MIL-STD 810G -40/+85° C
Humidity	95%RH @ +25°C for 12h and 55°C for 12h
Vibration	MIL-STD 810G, section 514.6 , 5-500 Hz, 60min/axis
Thermal Shocks	MIL-STD 810G, section 503.5, -40 to +85°C, 3 cycles
Drop Test	Minimum of one drop per axis – 4, 1 meter drops

Issue: 1711

In the effort to improve our products, we reserve the right to make changes judged to be necessary.

CONFIDENTIAL AND PROPRIETARY INFORMATION

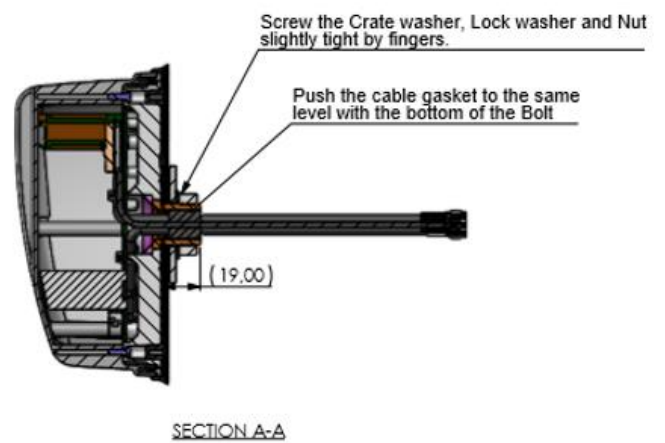
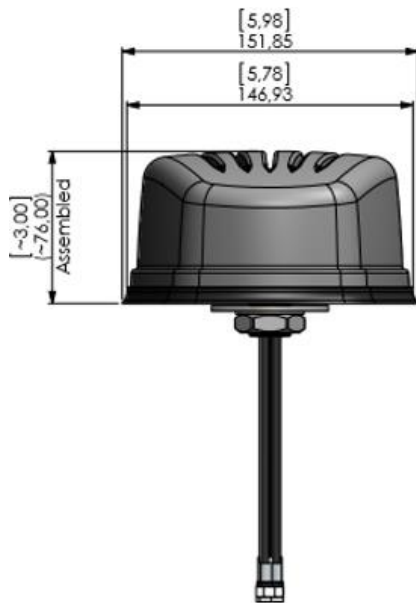
This document contains confidential and proprietary information of Pulse Electronics, Inc. (Pulse) and is protected by copyright, trade secret and other state and federal laws. Its receipt or possession does not convey any rights to reproduce, disclose its contents, or to manufacture, use or sell anything it may describe. Reproduction, disclosure or use without specific written authorization of Pulse is strictly forbidden.

**Description: MiMo LTE, MiMo WiFi, GNSS  
Vehicle Mount Antenna**

**Series: Panther**

**PART NUMBER: GPSMB50xx**

**MECHANICAL DRAWING**



Issue: 1711

In the effort to improve our products, we reserve the right to make changes judged to be necessary.

CONFIDENTIAL AND PROPRIETARY INFORMATION

This document contains confidential and proprietary information of Pulse Electronics, Inc. (Pulse) and is protected by copyright, trade secret and other state and federal laws. Its receipt or possession does not convey any rights to reproduce, disclose its contents, or to manufacture, use or sell anything it may describe. Reproduction, disclosure or use without specific written authorization of Pulse is strictly forbidden.

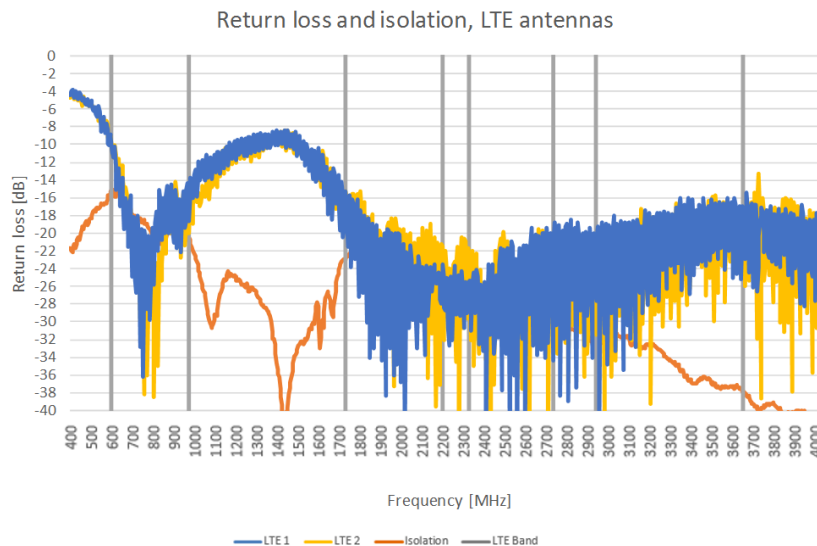
# Description: MiMo LTE, MiMo WiFi, GNSS Vehicle Mount Antenna

Series: Panther

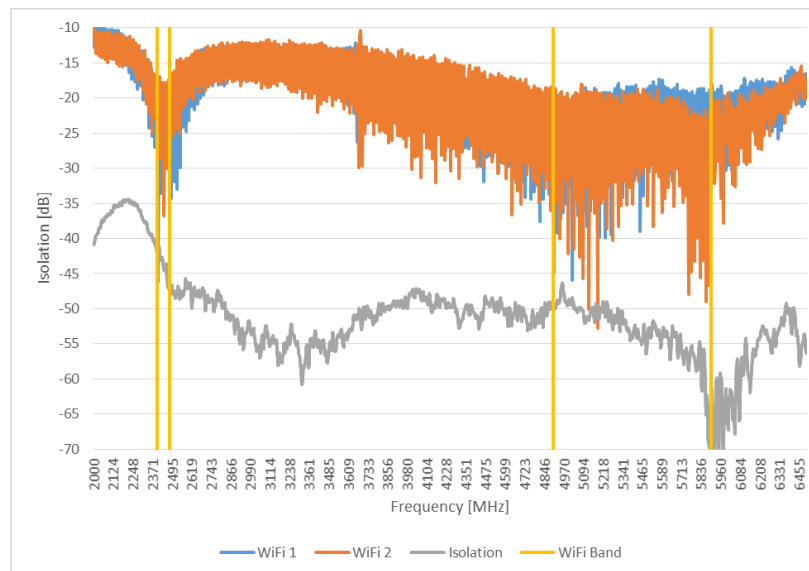
PART NUMBER: GPSMB50xx

## CHARTS

### Return Loss and isolation in free space, LTE antennas\*\*



### Return Loss and isolation in free space, WiFi antennas\*\*



Issue: 1711

In the effort to improve our products, we reserve the right to make changes judged to be necessary.

CONFIDENTIAL AND PROPRIETARY INFORMATION

This document contains confidential and proprietary information of Pulse Electronics, Inc. (Pulse) and is protected by copyright, trade secret and other state and federal laws. Its receipt or possession does not convey any rights to reproduce, disclose its contents, or to manufacture, use or sell anything it may describe. Reproduction, disclosure or use without specific written authorization of Pulse is strictly forbidden.

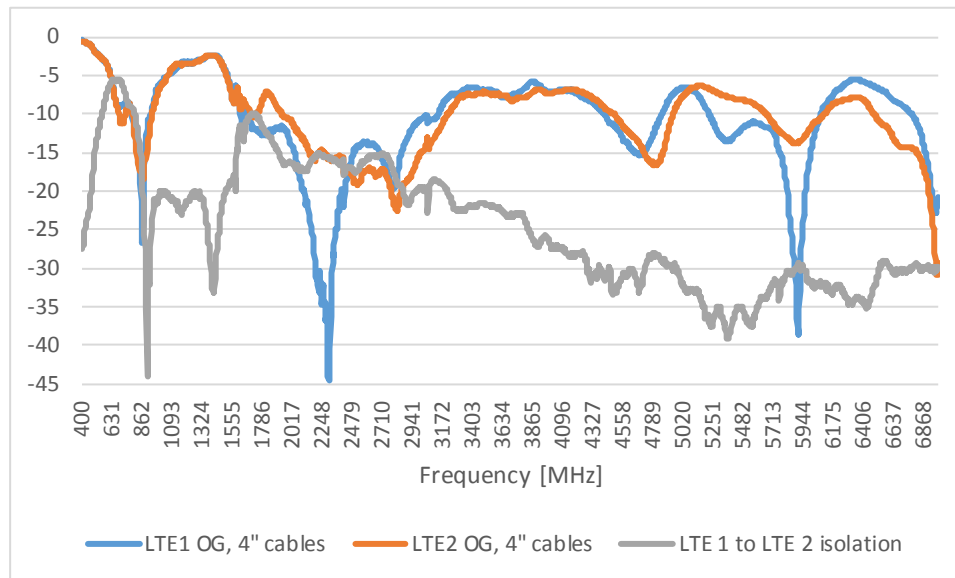
# Description: MiMo LTE, MiMo WiFi, GNSS Vehicle Mount Antenna

Series: Panther

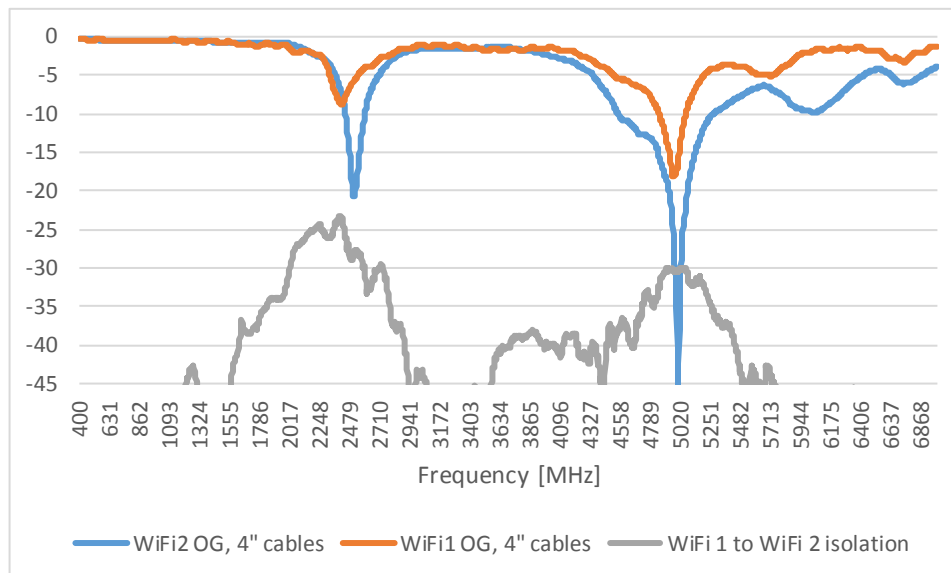
PART NUMBER: GPSMB50xx

## CHARTS

### Return Loss and isolation, LTE antennas\*



### Return Loss and isolation, WiFi antennas\*



Issue: 1711

In the effort to improve our products, we reserve the right to make changes judged to be necessary.

CONFIDENTIAL AND PROPRIETARY INFORMATION

This document contains confidential and proprietary information of Pulse Electronics, Inc. (Pulse) and is protected by copyright, trade secret and other state and federal laws. Its receipt or possession does not convey any rights to reproduce, disclose its contents, or to manufacture, use or sell anything it may describe. Reproduction, disclosure or use without specific written authorization of Pulse is strictly forbidden.



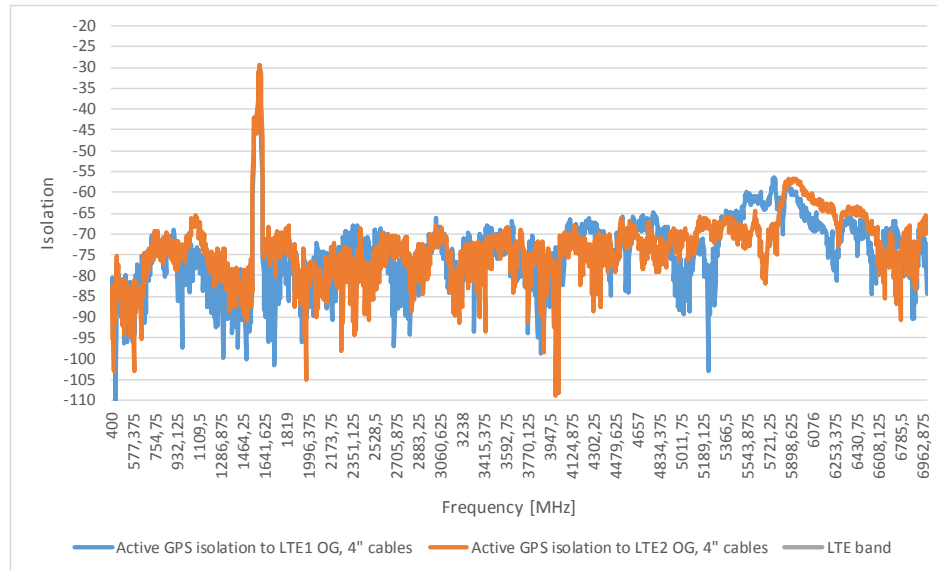
# Description: MiMo LTE, MiMo WiFi, GNSS Vehicle Mount Antenna

Series: Panther

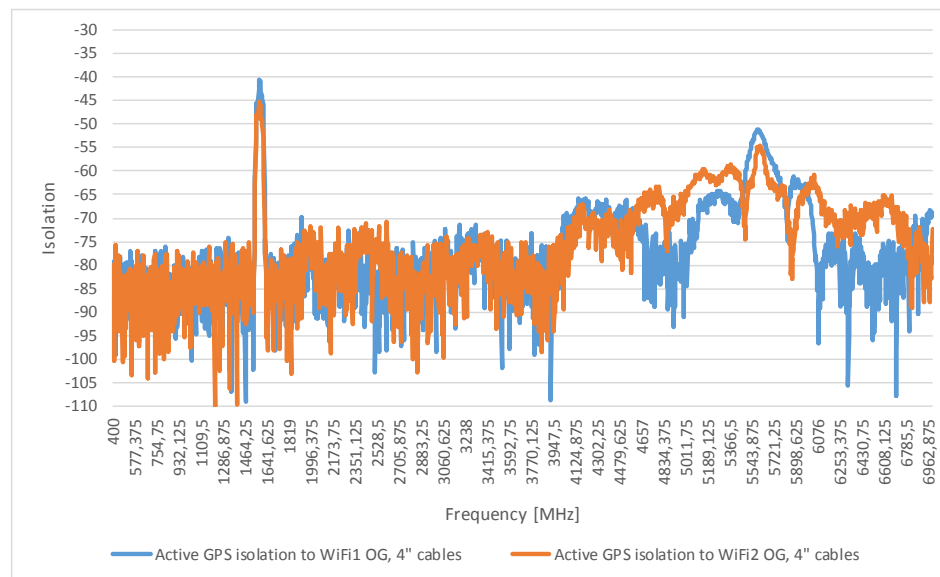
PART NUMBER: GPSMB50xx

## CHARTS

### GPS isolation to LTE 1 and LTE 2 antenna\*



### GPS isolation to WiFi 1 and WiFi 2 antenna\*



Issue: 1711

In the effort to improve our products, we reserve the right to make changes judged to be necessary.

CONFIDENTIAL AND PROPRIETARY INFORMATION

This document contains confidential and proprietary information of Pulse Electronics, Inc. (Pulse) and is protected by copyright, trade secret and other state and federal laws. Its receipt or possession does not convey any rights to reproduce, disclose its contents, or to manufacture, use or sell anything it may describe. Reproduction, disclosure or use without specific written authorization of Pulse is strictly forbidden.



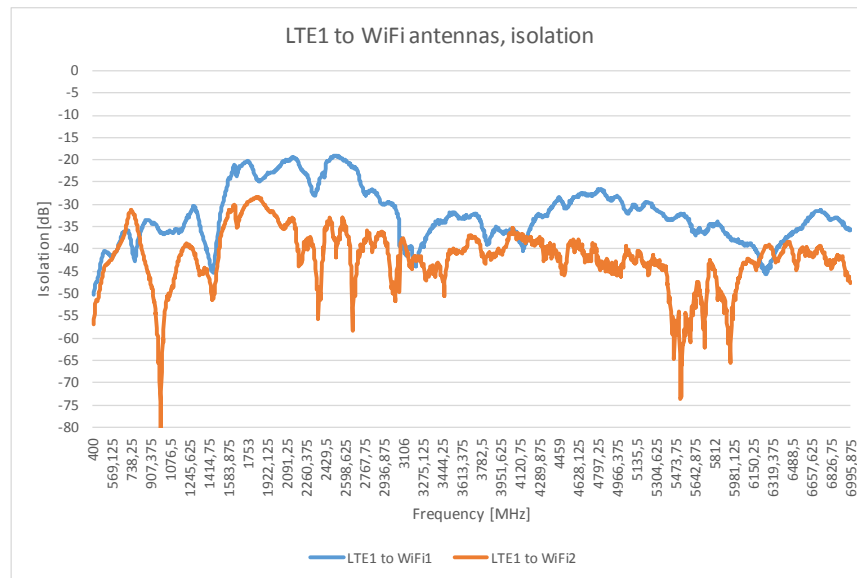
# Description: MiMo LTE, MiMo WiFi, GNSS Vehicle Mount Antenna

Series: Panther

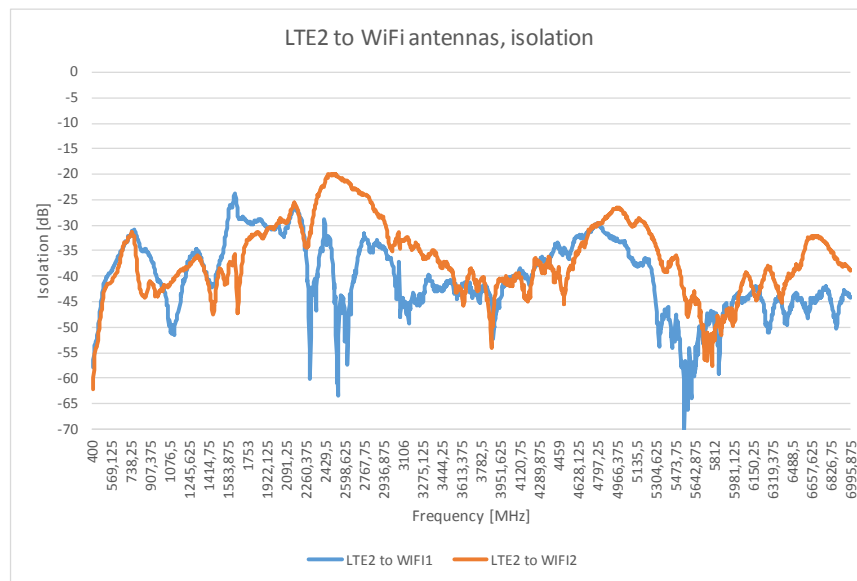
PART NUMBER: GPSMB50xx

## CHARTS

### Isolation characteristics, LTE 1 to WiFi 1 and WiFi 2\*



### Isolation characteristics, LTE 2 to WiFi 1 and WiFi 2\*



Issue: 1711

In the effort to improve our products, we reserve the right to make changes judged to be necessary.

CONFIDENTIAL AND PROPRIETARY INFORMATION

This document contains confidential and proprietary information of Pulse Electronics, Inc. (Pulse) and is protected by copyright, trade secret and other state and federal laws. Its receipt or possession does not convey any rights to reproduce, disclose its contents, or to manufacture, use or sell anything it may describe. Reproduction, disclosure or use without specific written authorization of Pulse is strictly forbidden.

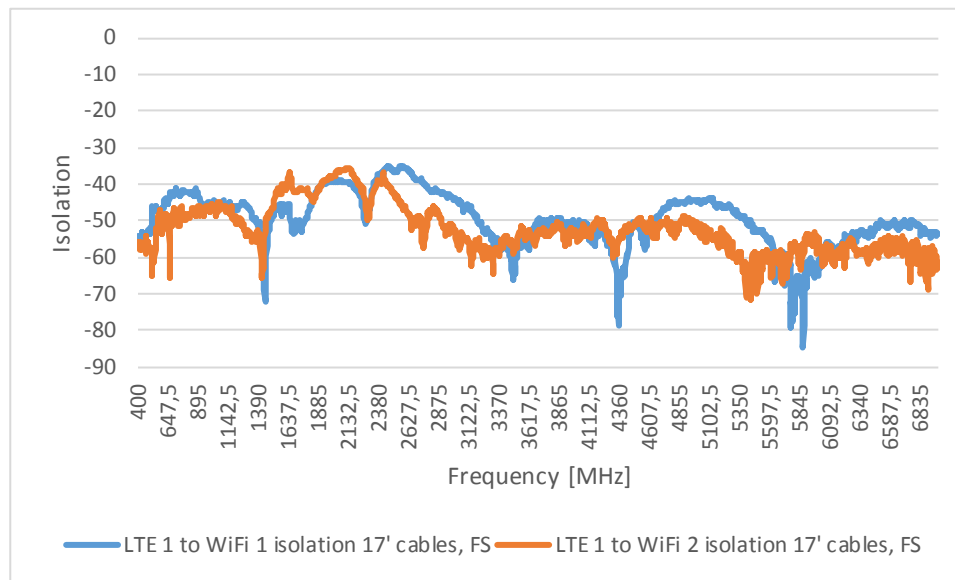
# Description: MiMo LTE, MiMo WiFi, GNSS Vehicle Mount Antenna

Series: Panther

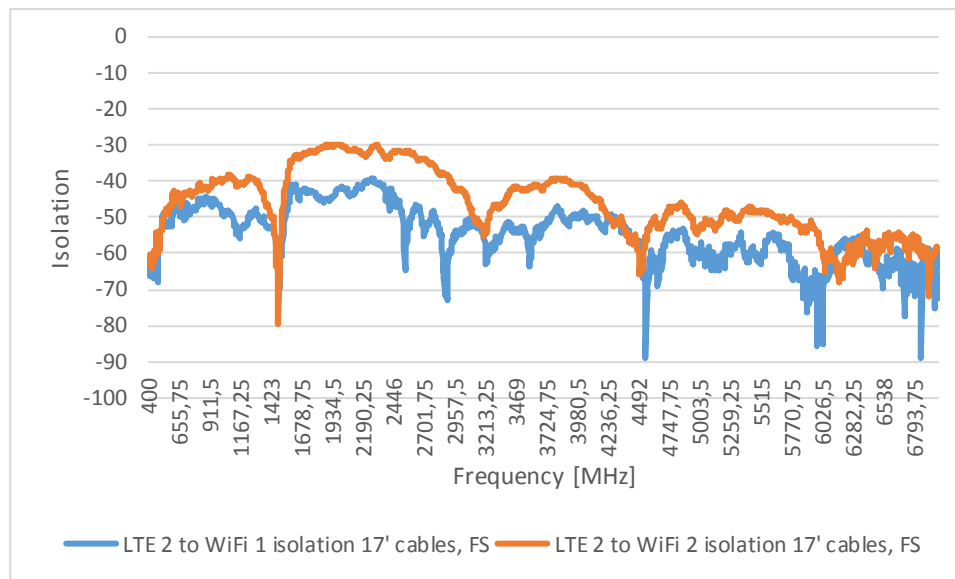
PART NUMBER: GPSMB50xx

## CHARTS

### Isolation characteristics, LTE 1 to WiFi 1 and WiFi 2\*\*



### Isolation characteristics, LTE 2 to WiFi 1 and WiFi 2\*\*



Issue: 1711

In the effort to improve our products, we reserve the right to make changes judged to be necessary.

CONFIDENTIAL AND PROPRIETARY INFORMATION

This document contains confidential and proprietary information of Pulse Electronics, Inc. (Pulse) and is protected by copyright, trade secret and other state and federal laws. Its receipt or possession does not convey any rights to reproduce, disclose its contents, or to manufacture, use or sell anything it may describe. Reproduction, disclosure or use without specific written authorization of Pulse is strictly forbidden.

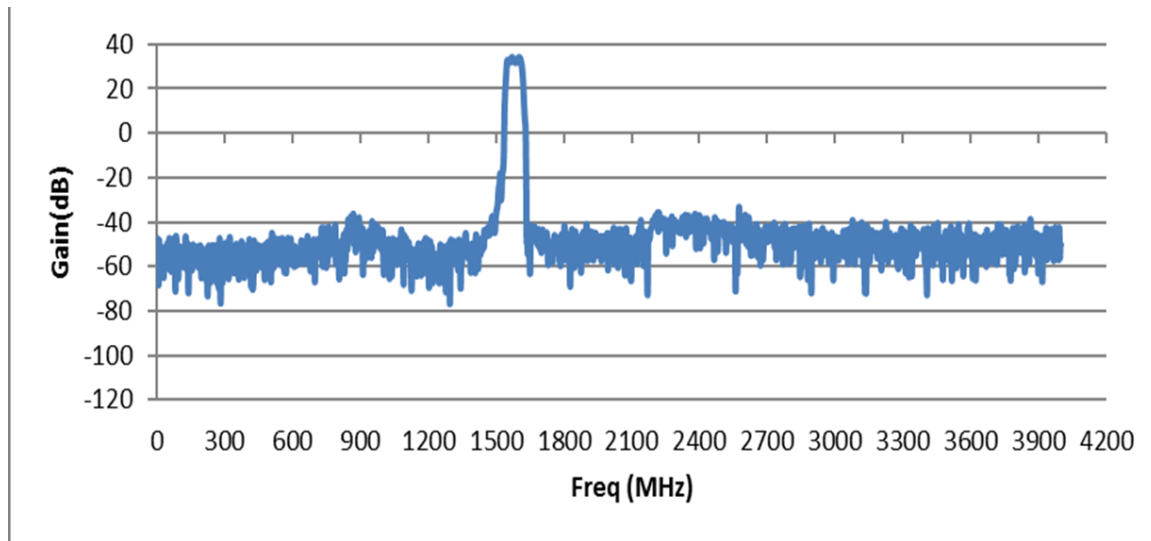
Description: MiMo LTE, MiMo WiFi, GNSS  
Vehicle Mount Antenna

Series: Panther

PART NUMBER: GPSMB50xx

## CHARTS

### GNSS LNA performance



Issue: 1711

In the effort to improve our products, we reserve the right to make changes judged to be necessary.

CONFIDENTIAL AND PROPRIETARY INFORMATION

This document contains confidential and proprietary information of Pulse Electronics, Inc. (Pulse) and is protected by copyright, trade secret and other state and federal laws. Its receipt or possession does not convey any rights to reproduce, disclose its contents, or to manufacture, use or sell anything it may describe. Reproduction, disclosure or use without specific written authorization of Pulse is strictly forbidden.

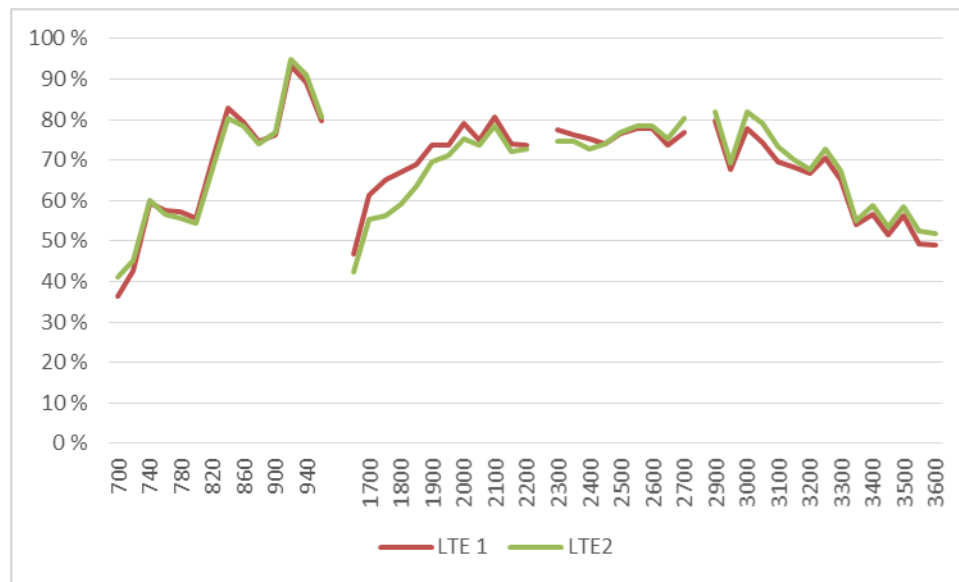
**Description: MiMo LTE, MiMo WiFi, GNSS  
Vehicle Mount Antenna**

**Series: Panther**

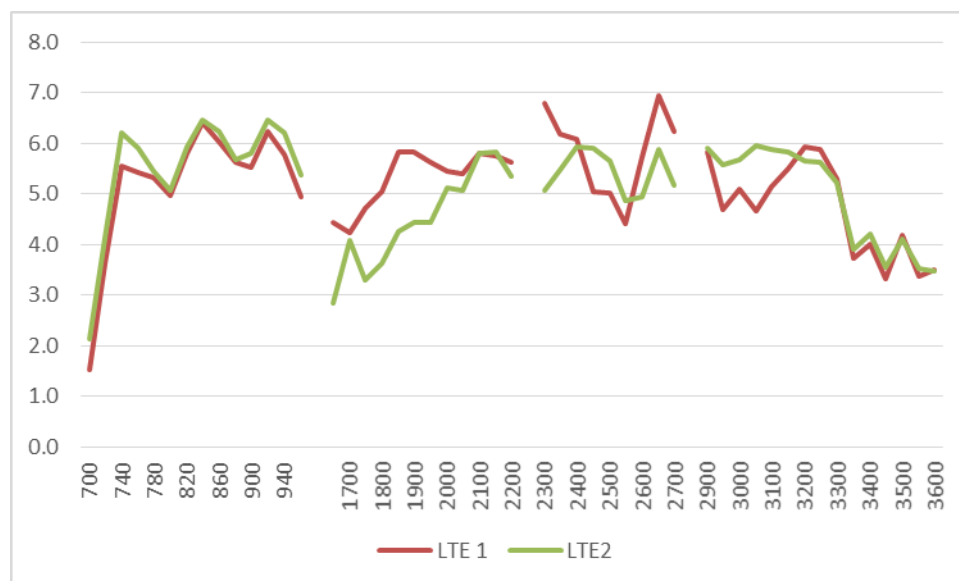
**PART NUMBER: GPSMB50xx**

**CHARTS**

**LTE antenna total efficiency with 2ft metal plate and 4inch cables**



**Maximum 3D gain, LTE antenna with 2ft metal plate and 4inch cables**



Issue: 1711

In the effort to improve our products, we reserve the right to make changes judged to be necessary.

CONFIDENTIAL AND PROPRIETARY INFORMATION

This document contains confidential and proprietary information of Pulse Electronics, Inc. (Pulse) and is protected by copyright, trade secret and other state and federal laws. Its receipt or possession does not convey any rights to reproduce, disclose its contents, or to manufacture, use or sell anything it may describe. Reproduction, disclosure or use without specific written authorization of Pulse is strictly forbidden.

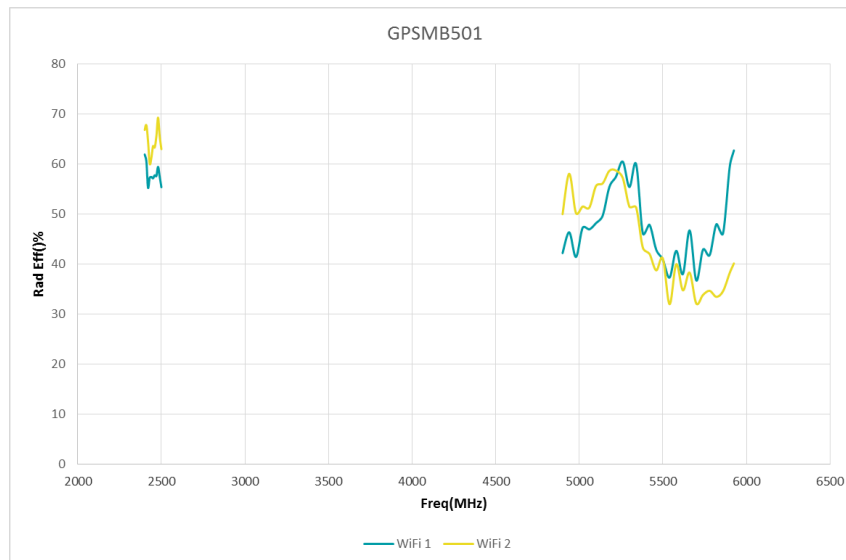
# Description: MiMo LTE, MiMo WiFi, GNSS Vehicle Mount Antenna

Series: Panther

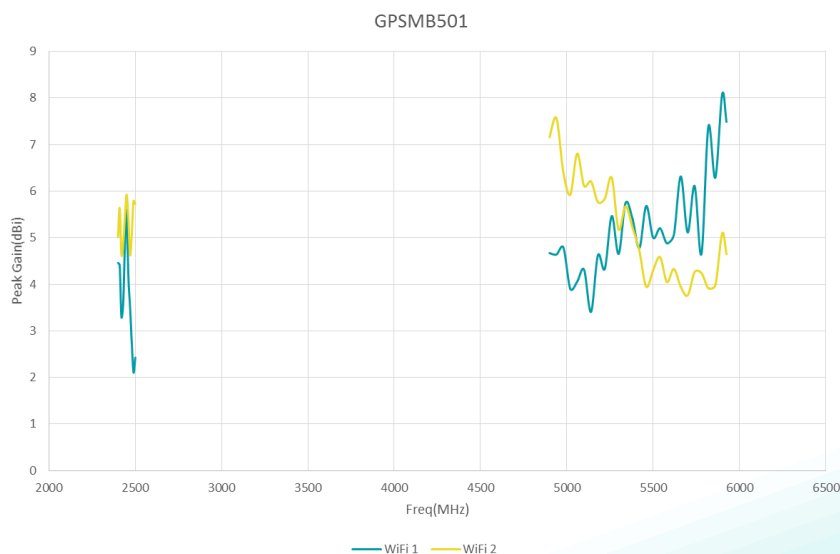
PART NUMBER: GPSMB50xx

## CHARTS

WiFi antenna total efficiency with 2ft metal plate and 4inch cables



Maximum 3D gain, WiFi antenna with 2ft metal plate and 4inch cables



Issue: 1711

In the effort to improve our products, we reserve the right to make changes judged to be necessary.

CONFIDENTIAL AND PROPRIETARY INFORMATION

This document contains confidential and proprietary information of Pulse Electronics, Inc. (Pulse) and is protected by copyright, trade secret and other state and federal laws. Its receipt or possession does not convey any rights to reproduce, disclose its contents, or to manufacture, use or sell anything it may describe. Reproduction, disclosure or use without specific written authorization of Pulse is strictly forbidden.

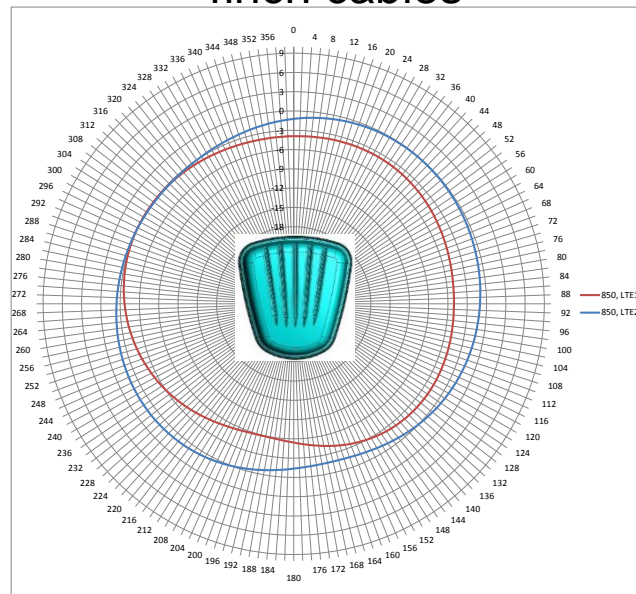
# Description: MiMo LTE, MiMo WiFi, GNSS Vehicle Mount Antenna

Series: Panther

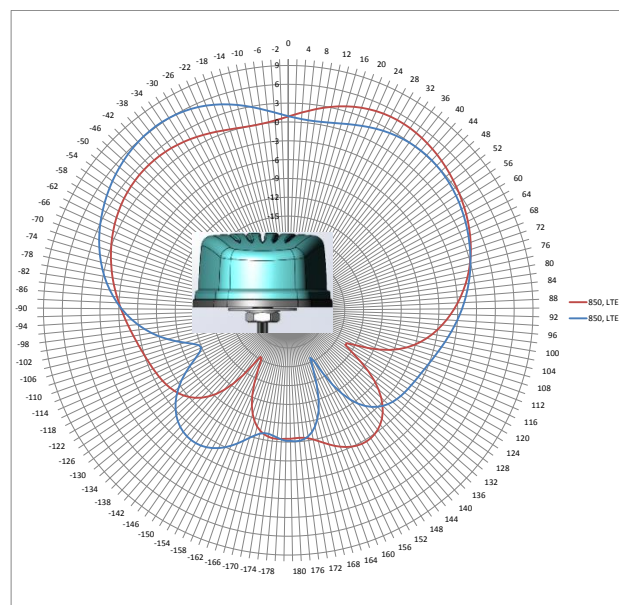
**PART NUMBER: GPSMB50xx**

## CHARTS

LTE antenna radiation pattern at 850MHz with 2ft metal plate and 4inch cables



Horizontal plot



Vertical plot front view

Issue: 1711

In the effort to improve our products, we reserve the right to make changes judged to be necessary.

CONFIDENTIAL AND PROPRIETARY INFORMATION

This document contains confidential and proprietary information of Pulse Electronics, Inc. (Pulse) and is protected by copyright, trade secret and other state and federal laws. Its receipt or possession does not convey any rights to reproduce, disclose its contents, or to manufacture, use or sell anything it may describe. Reproduction, disclosure or use without specific written authorization of Pulse is strictly forbidden.

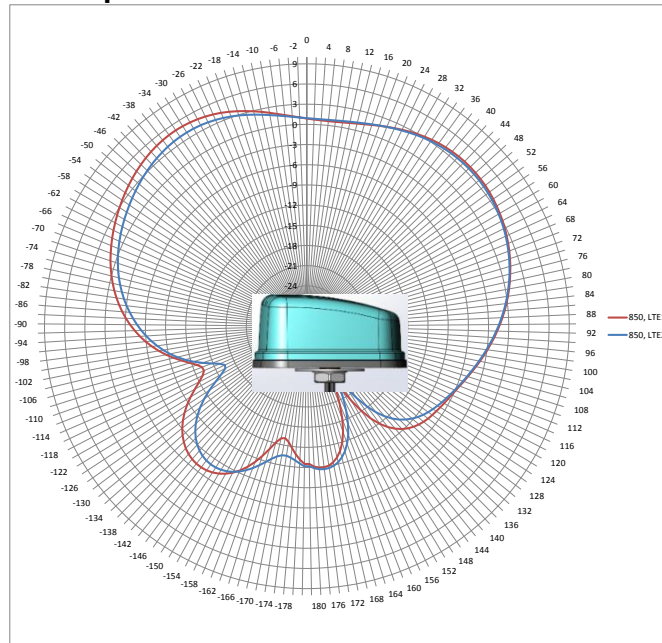
Series: Panther

Description: MiMo LTE, MiMo WiFi, GNSS  
Vehicle Mount Antenna

PART NUMBER: GPSMB50xx

## CHARTS

LTE antenna radiation pattern at 850MHz with 2ft metal plate and



Vertical plot side view

Issue: 1711

In the effort to improve our products, we reserve the right to make changes judged to be necessary.

CONFIDENTIAL AND PROPRIETARY INFORMATION

This document contains confidential and proprietary information of Pulse Electronics, Inc. (Pulse) and is protected by copyright, trade secret and other state and federal laws. Its receipt or possession does not convey any rights to reproduce, disclose its contents, or to manufacture, use or sell anything it may describe. Reproduction, disclosure or use without specific written authorization of Pulse is strictly forbidden.



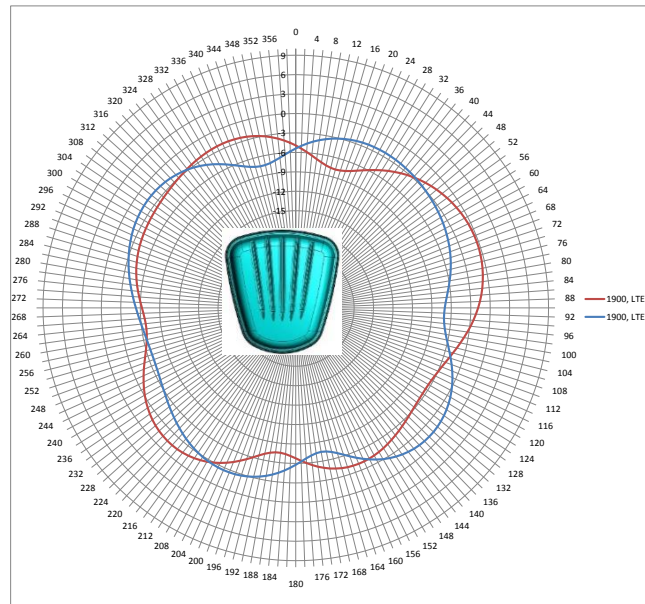
# Description: MiMo LTE, MiMo WiFi, GNSS Vehicle Mount Antenna

Series: Panther

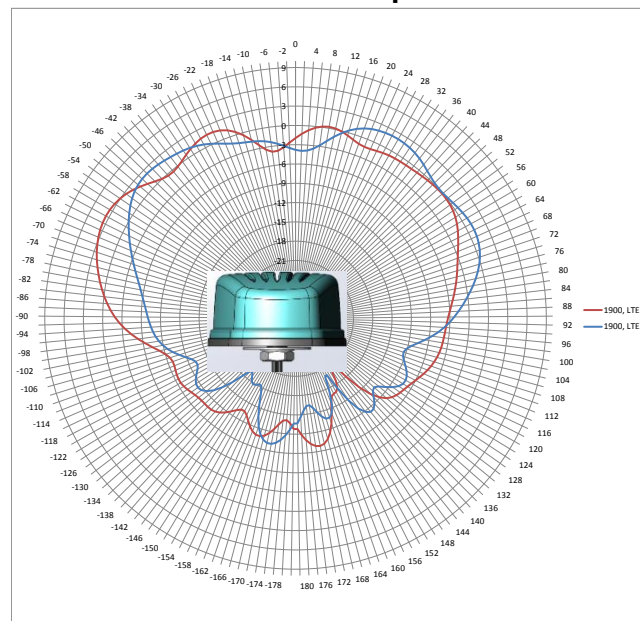
**PART NUMBER: GPSMB50xx**

## CHARTS

LTE antenna radiation pattern at 1900MHz with 2ft metal plate and 4inch cables



Horizontal plot



Vertical plot front view

Issue: 1711

In the effort to improve our products, we reserve the right to make changes judged to be necessary.

CONFIDENTIAL AND PROPRIETARY INFORMATION

This document contains confidential and proprietary information of Pulse Electronics, Inc. (Pulse) and is protected by copyright, trade secret and other state and federal laws. Its receipt or possession does not convey any rights to reproduce, disclose its contents, or to manufacture, use or sell anything it may describe. Reproduction, disclosure or use without specific written authorization of Pulse is strictly forbidden.

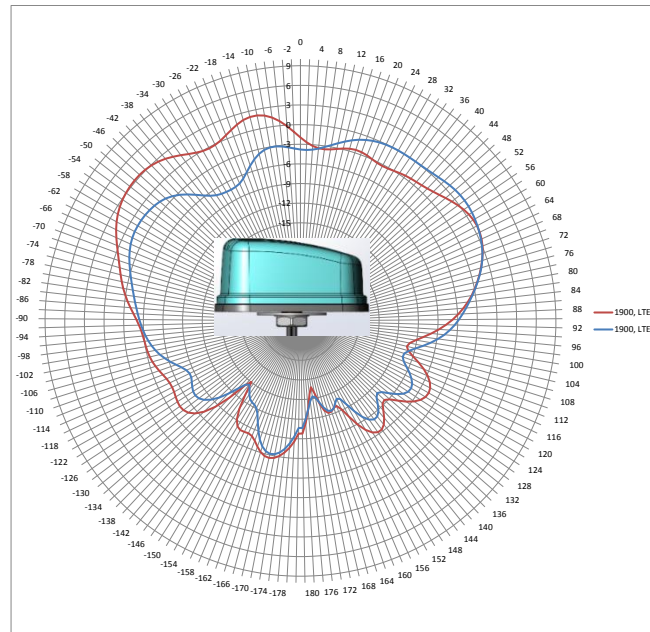
# Description: MiMo LTE, MiMo WiFi, GNSS Vehicle Mount Antenna

Series: Panther

**PART NUMBER: GPSMB50xx**

## CHARTS

LTE antenna radiation pattern at 1900MHz with 2ft metal plate and 4inch cables



Vertical plot side view

Issue: 1711

In the effort to improve our products, we reserve the right to make changes judged to be necessary.

CONFIDENTIAL AND PROPRIETARY INFORMATION

This document contains confidential and proprietary information of Pulse Electronics, Inc. (Pulse) and is protected by copyright, trade secret and other state and federal laws. Its receipt or possession does not convey any rights to reproduce, disclose its contents, or to manufacture, use or sell anything it may describe. Reproduction, disclosure or use without specific written authorization of Pulse is strictly forbidden.

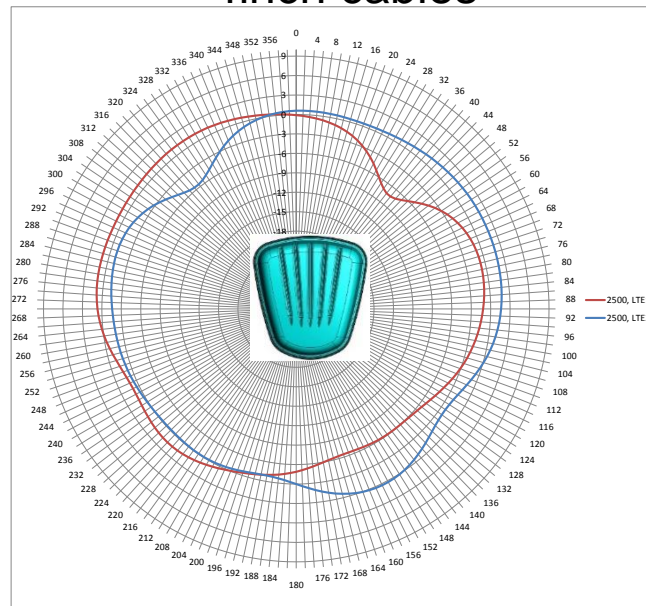
# Description: MiMo LTE, MiMo WiFi, GNSS Vehicle Mount Antenna

Series: Panther

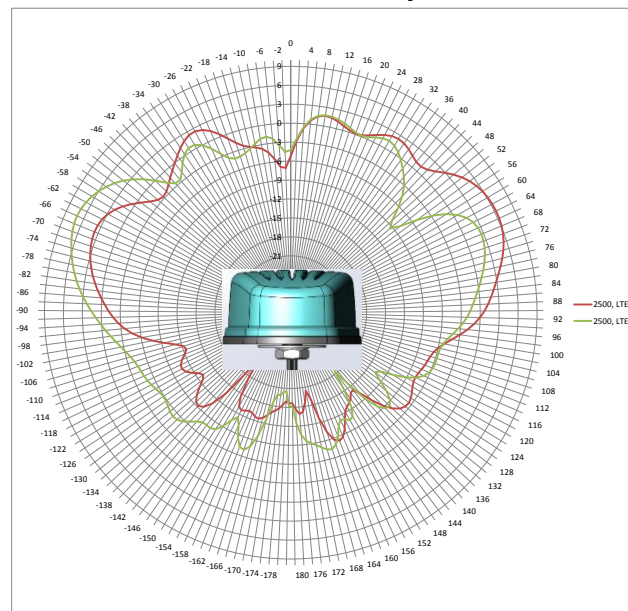
PART NUMBER: GPSMB50xx

## CHARTS

LTE antenna radiation pattern at 2500MHz with 2ft metal plate and 4inch cables



Horizontal plot



Vertical plot front view

Issue: 1711

In the effort to improve our products, we reserve the right to make changes judged to be necessary.

CONFIDENTIAL AND PROPRIETARY INFORMATION

This document contains confidential and proprietary information of Pulse Electronics, Inc. (Pulse) and is protected by copyright, trade secret and other state and federal laws. Its receipt or possession does not convey any rights to reproduce, disclose its contents, or to manufacture, use or sell anything it may describe. Reproduction, disclosure or use without specific written authorization of Pulse is strictly forbidden.

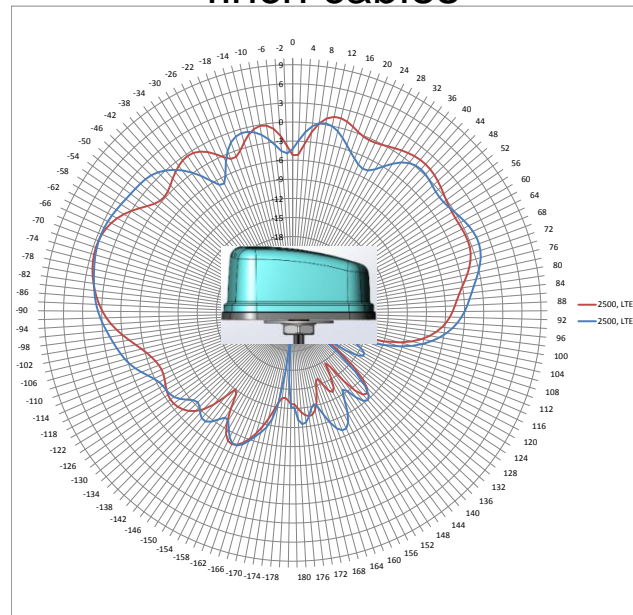
**Description: MiMo LTE, MiMo WiFi, GNSS  
Vehicle Mount Antenna**

**Series: Panther**

**PART NUMBER: GPSMB50xx**

**CHARTS**

LTE antenna radiation pattern at 2500MHz with 2ft metal plate and  
4inch cables



Vertical plot side view

Issue: 1711

In the effort to improve our products, we reserve the right to make changes judged to be necessary.

CONFIDENTIAL AND PROPRIETARY INFORMATION

This document contains confidential and proprietary information of Pulse Electronics, Inc. (Pulse) and is protected by copyright, trade secret and other state and federal laws. Its receipt or possession does not convey any rights to reproduce, disclose its contents, or to manufacture, use or sell anything it may describe. Reproduction, disclosure or use without specific written authorization of Pulse is strictly forbidden.



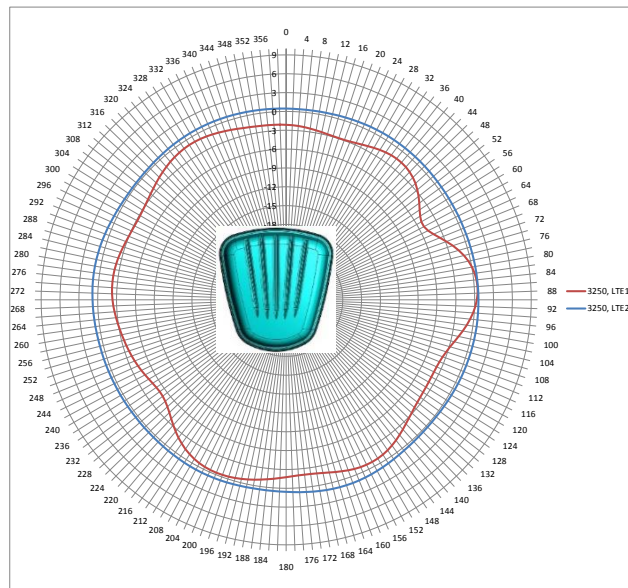
# Description: MiMo LTE, MiMo WiFi, GNSS Vehicle Mount Antenna

Series: Panther

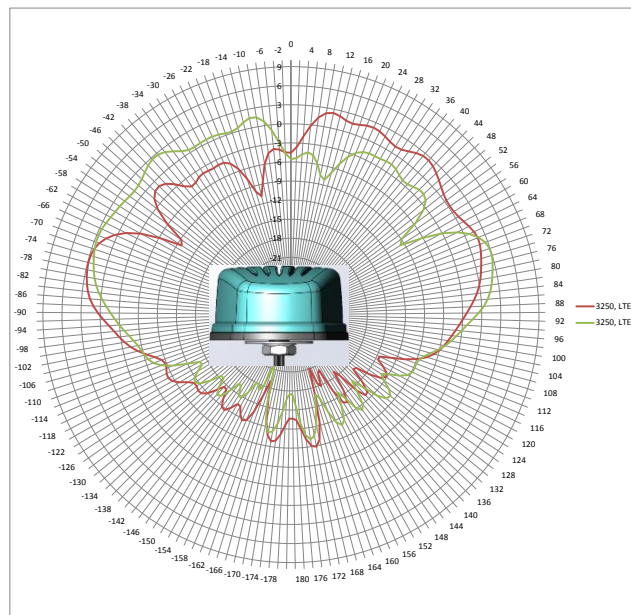
**PART NUMBER: GPSMB50xx**

## CHARTS

LTE antenna radiation pattern at 3250MHz with 2ft metal plate and 4inch cables



Horizontal plot



Vertical plot front view

Issue: 1711

In the effort to improve our products, we reserve the right to make changes judged to be necessary.

CONFIDENTIAL AND PROPRIETARY INFORMATION

This document contains confidential and proprietary information of Pulse Electronics, Inc. (Pulse) and is protected by copyright, trade secret and other state and federal laws. Its receipt or possession does not convey any rights to reproduce, disclose its contents, or to manufacture, use or sell anything it may describe. Reproduction, disclosure or use without specific written authorization of Pulse is strictly forbidden.

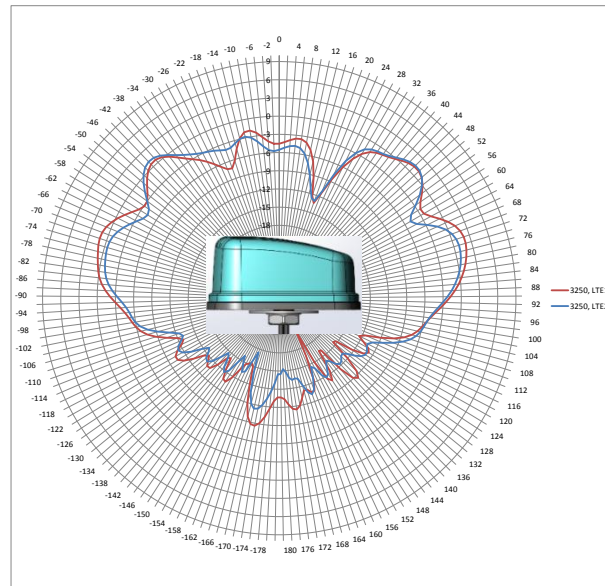
**Description: MiMo LTE, MiMo WiFi, GNSS  
Vehicle Mount Antenna**

**Series: Panther**

**PART NUMBER: GPSMB50xx**

## CHARTS

LTE antenna radiation pattern at 3250MHz with 2ft metal plate and  
4inch cables



Vertical plot side view

Issue: 1711

In the effort to improve our products, we reserve the right to make changes judged to be necessary.

CONFIDENTIAL AND PROPRIETARY INFORMATION

This document contains confidential and proprietary information of Pulse Electronics, Inc. (Pulse) and is protected by copyright, trade secret and other state and federal laws. Its receipt or possession does not convey any rights to reproduce, disclose its contents, or to manufacture, use or sell anything it may describe. Reproduction, disclosure or use without specific written authorization of Pulse is strictly forbidden.

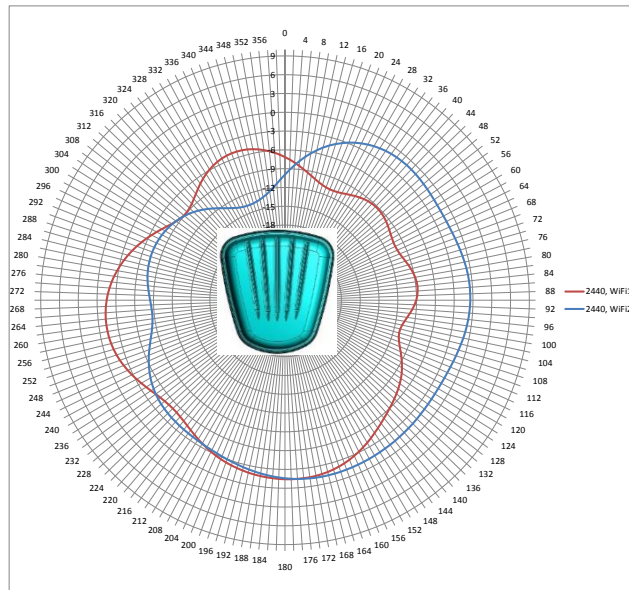
# Description: MiMo LTE, MiMo WiFi, GNSS Vehicle Mount Antenna

Series: Panther

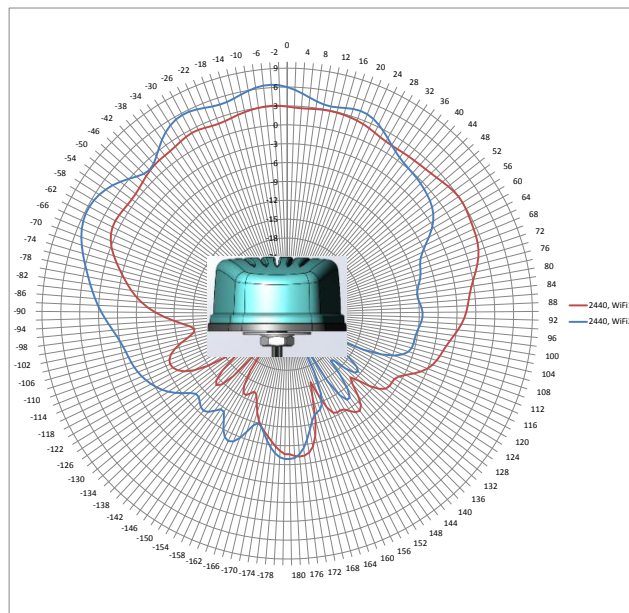
**PART NUMBER: GPSMB50xx**

## CHARTS

WiFi antenna radiation pattern at 2440MHz with 2ft metal plate and 4inch cables



Horizontal plot



Vertical plot front view

Issue: 1711

In the effort to improve our products, we reserve the right to make changes judged to be necessary.

CONFIDENTIAL AND PROPRIETARY INFORMATION

This document contains confidential and proprietary information of Pulse Electronics, Inc. (Pulse) and is protected by copyright, trade secret and other state and federal laws. Its receipt or possession does not convey any rights to reproduce, disclose its contents, or to manufacture, use or sell anything it may describe. Reproduction, disclosure or use without specific written authorization of Pulse is strictly forbidden.



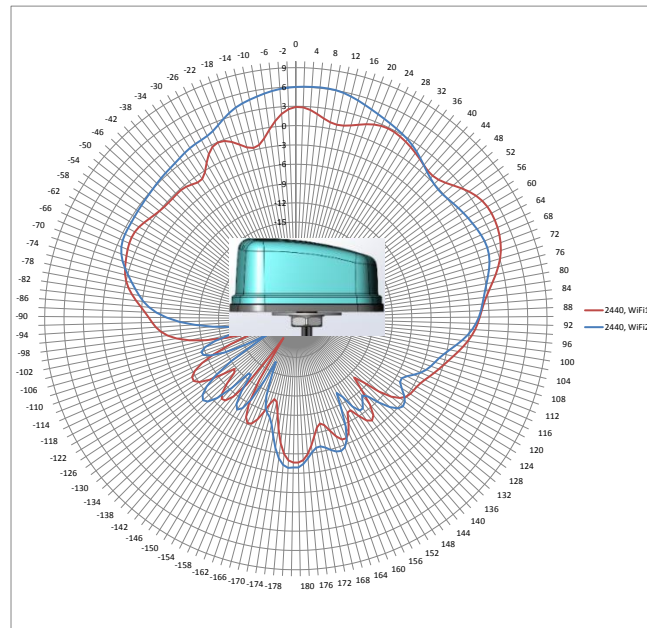
Series: Panther

Description: MiMo LTE, MiMo WiFi, GNSS  
Vehicle Mount Antenna

PART NUMBER: GPSMB50xx

## CHARTS

WiFi antenna radiation pattern at 2440MHz with 2ft metal plate and 4inch cables



Vertical plot side view

Issue: 1711

In the effort to improve our products, we reserve the right to make changes judged to be necessary.

CONFIDENTIAL AND PROPRIETARY INFORMATION

This document contains confidential and proprietary information of Pulse Electronics, Inc. (Pulse) and is protected by copyright, trade secret and other state and federal laws. Its receipt or possession does not convey any rights to reproduce, disclose its contents, or to manufacture, use or sell anything it may describe. Reproduction, disclosure or use without specific written authorization of Pulse is strictly forbidden.

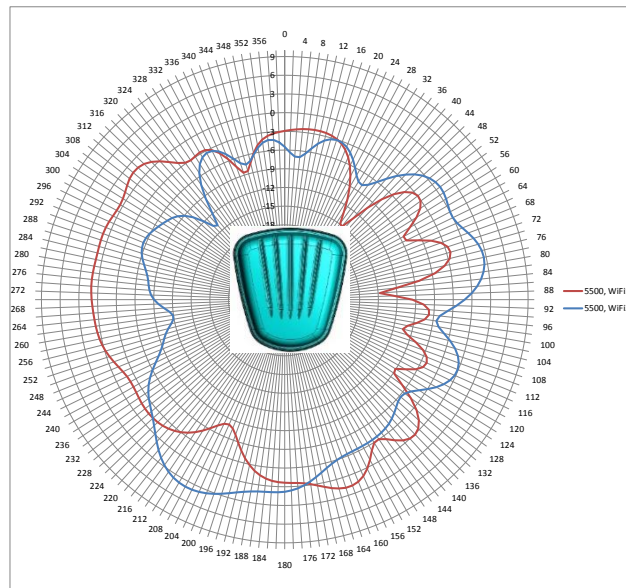
# Description: MiMo LTE, MiMo WiFi, GNSS Vehicle Mount Antenna

Series: Panther

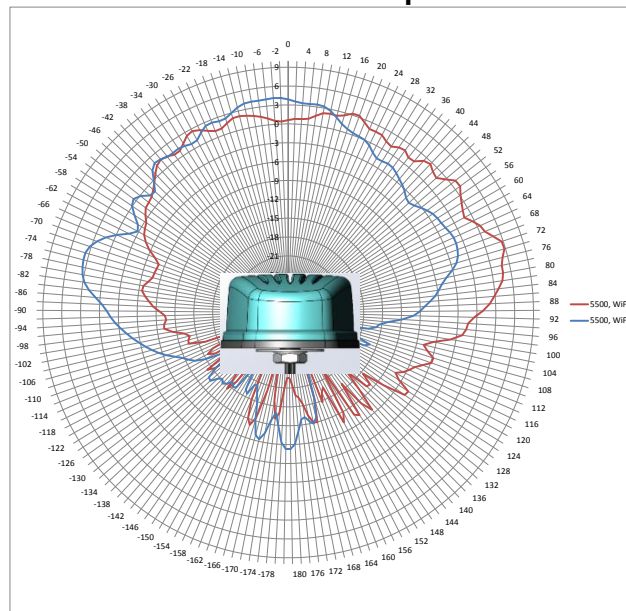
**PART NUMBER: GPSMB50xx**

## CHARTS

WiFi antenna radiation pattern at 5500MHz with 2ft metal plate and 4inch cables



Horizontal plot



Vertical plot front view

Issue: 1711

In the effort to improve our products, we reserve the right to make changes judged to be necessary.

CONFIDENTIAL AND PROPRIETARY INFORMATION

This document contains confidential and proprietary information of Pulse Electronics, Inc. (Pulse) and is protected by copyright, trade secret and other state and federal laws. Its receipt or possession does not convey any rights to reproduce, disclose its contents, or to manufacture, use or sell anything it may describe. Reproduction, disclosure or use without specific written authorization of Pulse is strictly forbidden.

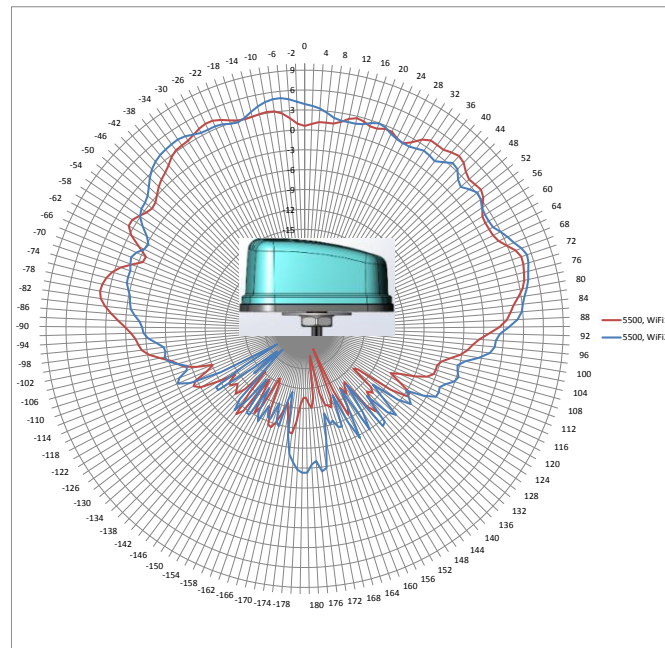
Series: Panther

Description: MiMo LTE, MiMo WiFi, GNSS  
Vehicle Mount Antenna

PART NUMBER: GPSMB50xx

## CHARTS

WiFi antenna radiation pattern at 5500MHz with 2ft metal plate and 4inch cables



Vertical plot side view

Issue: 1711

In the effort to improve our products, we reserve the right to make changes judged to be necessary.

CONFIDENTIAL AND PROPRIETARY INFORMATION

This document contains confidential and proprietary information of Pulse Electronics, Inc. (Pulse) and is protected by copyright, trade secret and other state and federal laws. Its receipt or possession does not convey any rights to reproduce, disclose its contents, or to manufacture, use or sell anything it may describe. Reproduction, disclosure or use without specific written authorization of Pulse is strictly forbidden.

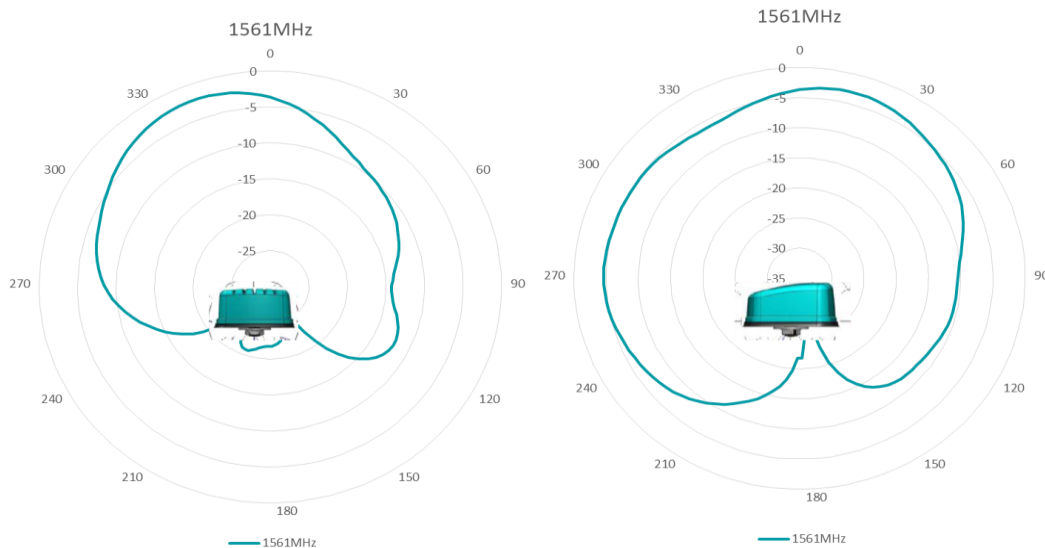
# Description: MiMo LTE, MiMo WiFi, GNSS Vehicle Mount Antenna

Series: Panther

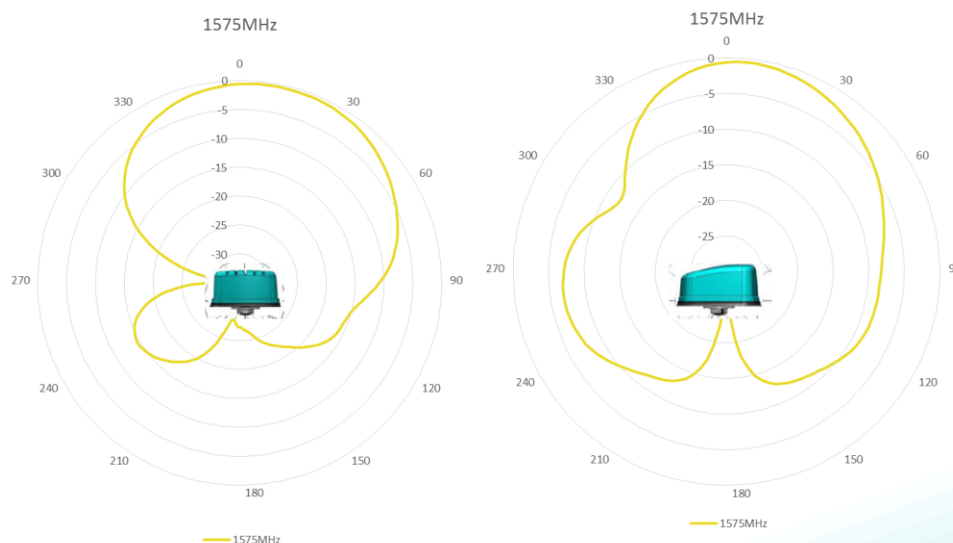
PART NUMBER: GPSMB50xx

## CHARTS

BD2 RHCP patterns, measured with 4inch cables in free space



GPS & Galileo RHCP patterns, measured with 4inch cables in free space



Issue: 1711

In the effort to improve our products, we reserve the right to make changes judged to be necessary.

CONFIDENTIAL AND PROPRIETARY INFORMATION

This document contains confidential and proprietary information of Pulse Electronics, Inc. (Pulse) and is protected by copyright, trade secret and other state and federal laws. Its receipt or possession does not convey any rights to reproduce, disclose its contents, or to manufacture, use or sell anything it may describe. Reproduction, disclosure or use without specific written authorization of Pulse is strictly forbidden.

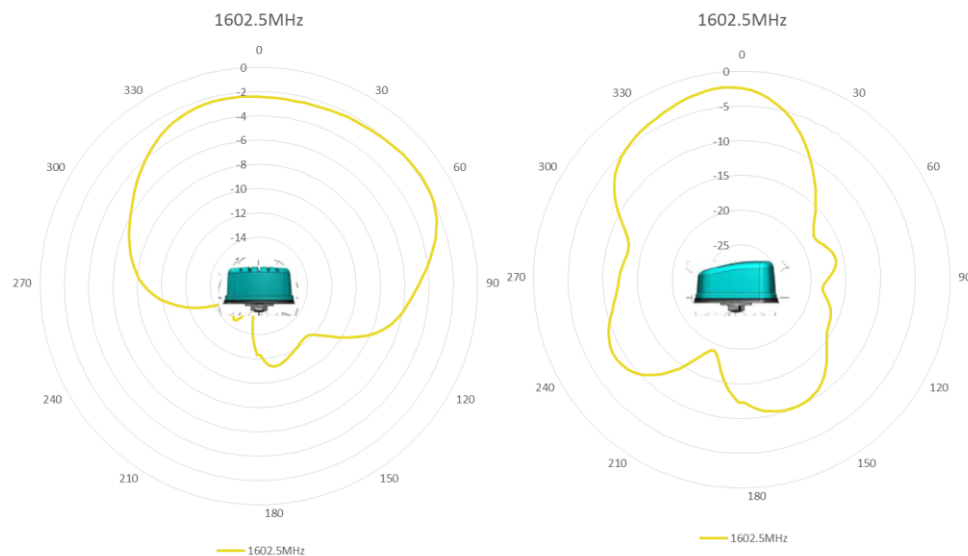
**Description: MiMo LTE, MiMo WiFi, GNSS  
Vehicle Mount Antenna**

**Series: Panther**

**PART NUMBER: GPSMB50xx**

**CHARTS**

GLONASS RHCP patterns, measured with 4inch cables in free space



Issue: 1711

In the effort to improve our products, we reserve the right to make changes judged to be necessary.

CONFIDENTIAL AND PROPRIETARY INFORMATION

This document contains confidential and proprietary information of Pulse Electronics, Inc. (Pulse) and is protected by copyright, trade secret and other state and federal laws. Its receipt or possession does not convey any rights to reproduce, disclose its contents, or to manufacture, use or sell anything it may describe. Reproduction, disclosure or use without specific written authorization of Pulse is strictly forbidden.

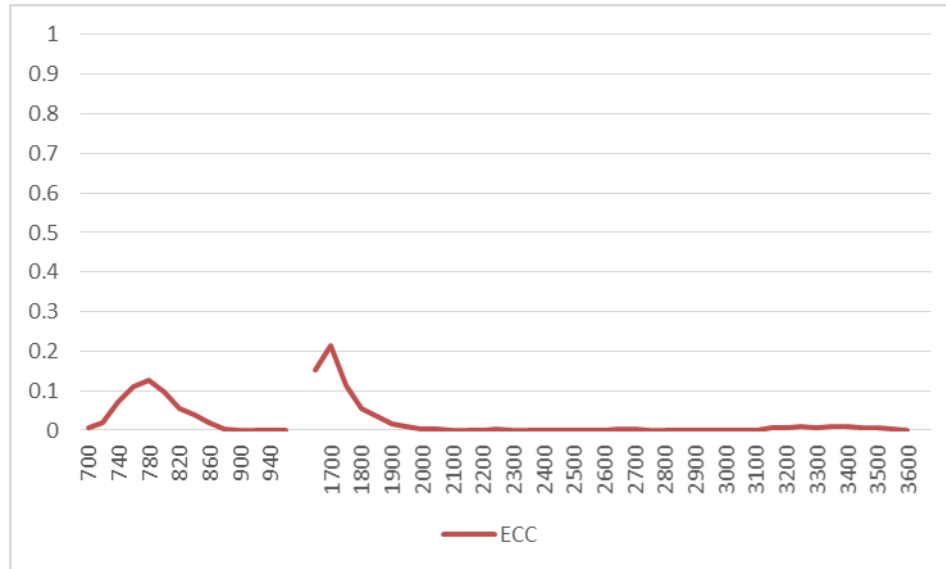
**Description: MiMo LTE, MiMo WiFi, GNSS  
Vehicle Mount Antenna**

**Series: Panther**

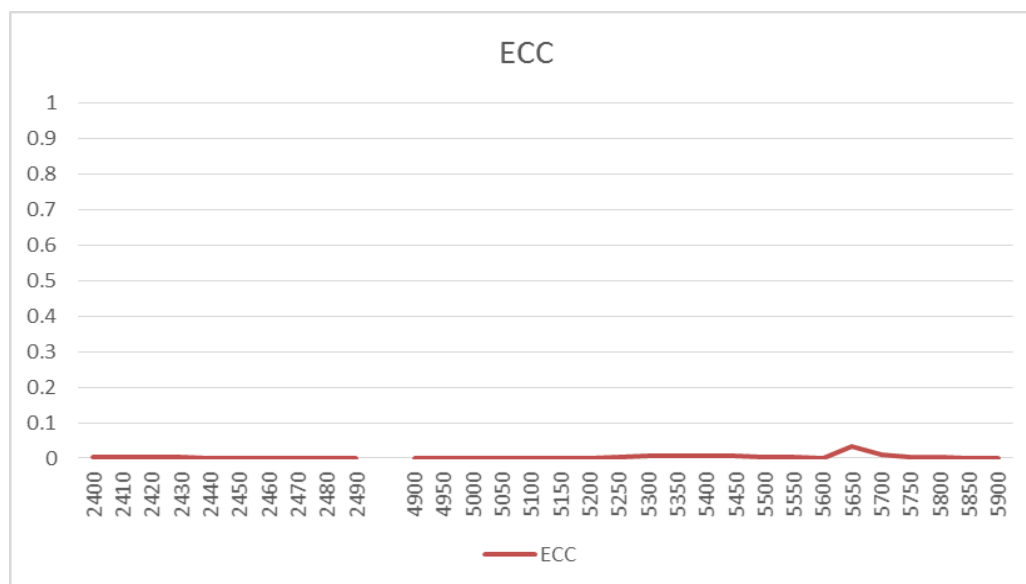
**PART NUMBER: GPSMB50xx**

## CHARTS

### Envelope correlation coefficient – LTE 1 to LTE 2



### Envelope correlation coefficient – WiFi 1 to WiFi 2



Issue: 1711

In the effort to improve our products, we reserve the right to make changes judged to be necessary.

CONFIDENTIAL AND PROPRIETARY INFORMATION

This document contains confidential and proprietary information of Pulse Electronics, Inc. (Pulse) and is protected by copyright, trade secret and other state and federal laws. Its receipt or possession does not convey any rights to reproduce, disclose its contents, or to manufacture, use or sell anything it may describe. Reproduction, disclosure or use without specific written authorization of Pulse is strictly forbidden.

**Series: Panther**

**Description: MiMo LTE, MiMo WiFi, GNSS  
Vehicle Mount Antenna**

**PART NUMBER: GPSMB50xx**

## PACKAGING

One antenna pack in one PE bag, 6 antennae in one box