

# Customer Information Sheet

DRAWING No.: M80-25300XX & M80-25400XX

IF IN DOUBT - ASK

C

NOT TO SCALE

THIRD ANGLE PROJECTION

ALL DIMENSIONS IN mm

**SPECIFICATION:**

**MATERIAL:**  
BERYLLIUM COPPER

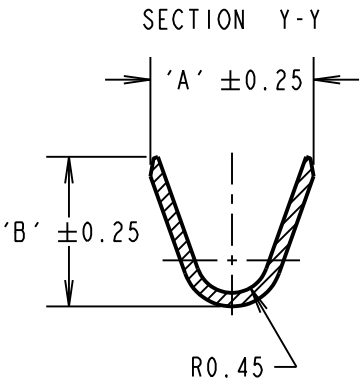
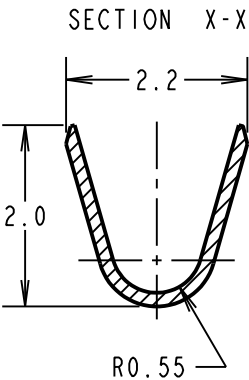
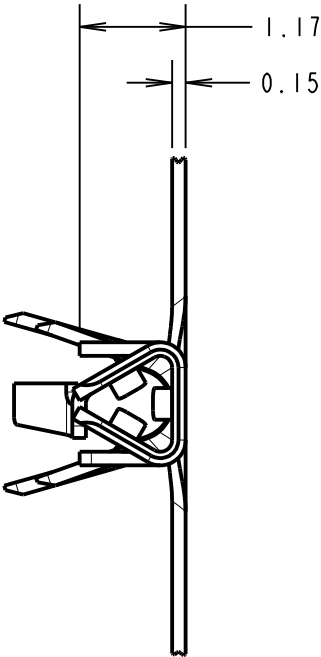
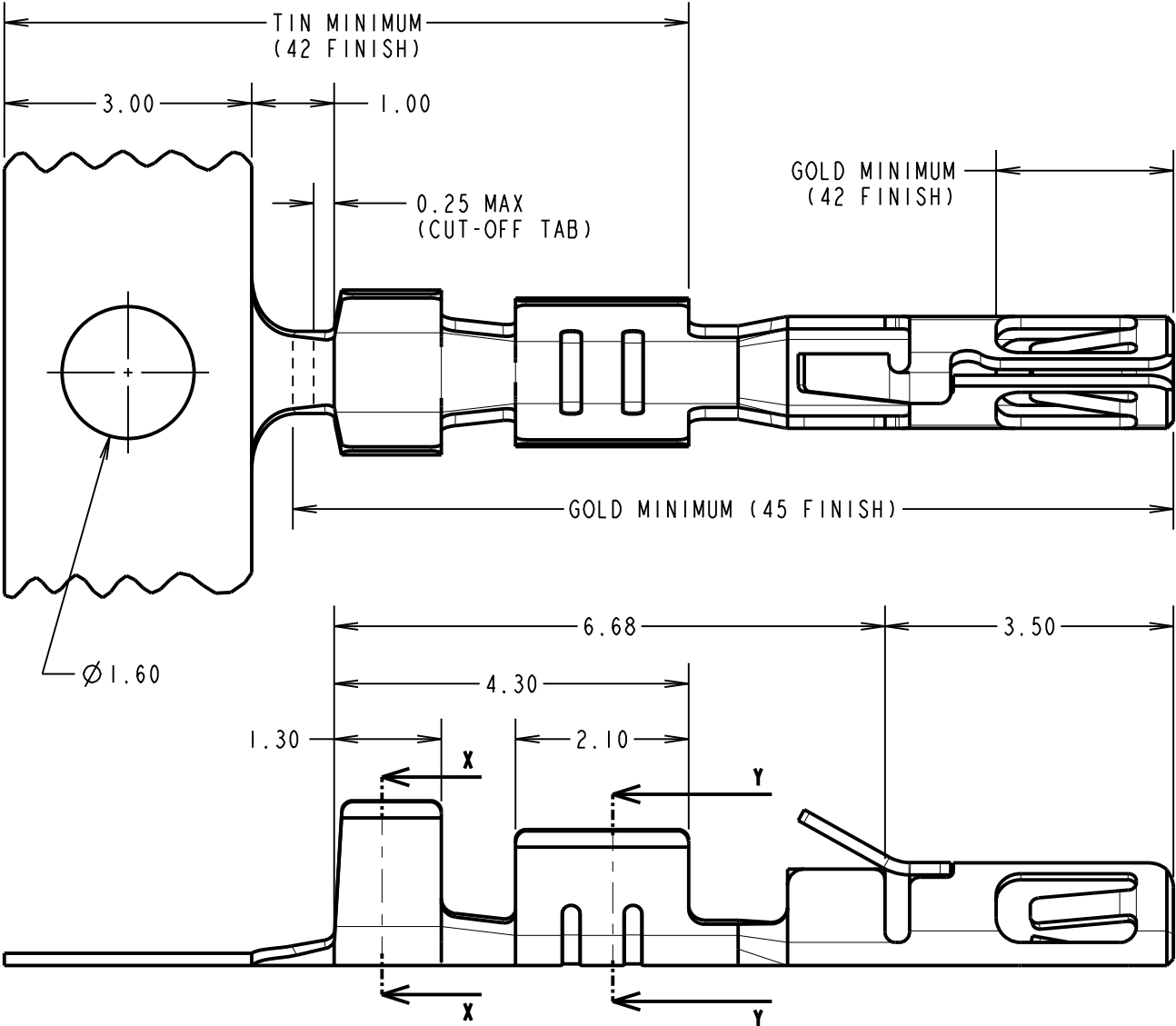
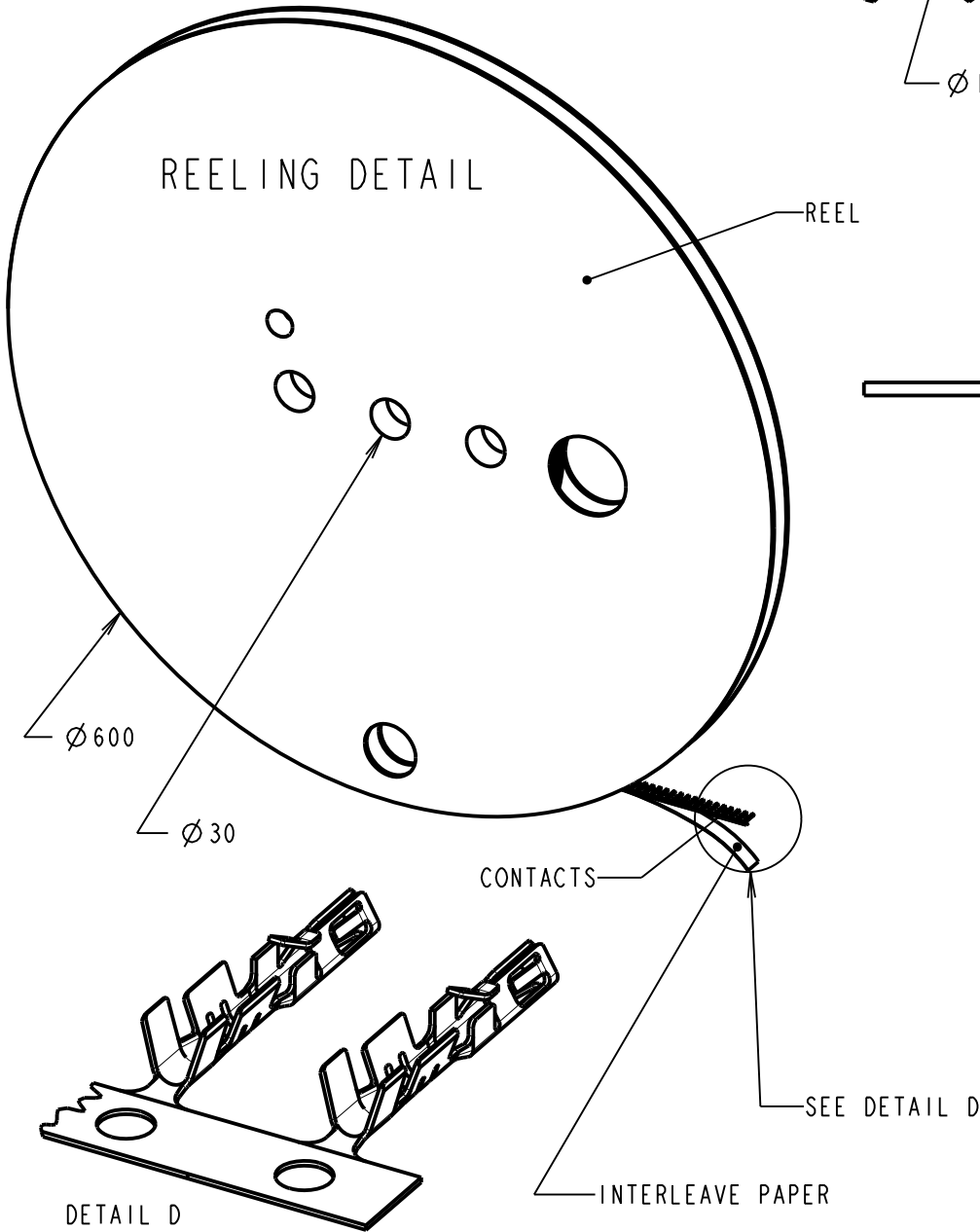
**FINISH (ALL OVER NICKEL):**  
45 = 0.3µ MIN GOLD  
42 = 3µ MIN 100% TIN AND 0.3µ MIN GOLD, SELECTIVE PLATE

**MECHANICAL:**  
INSERTION FORCE = 2.8N MAX, 1.0N MIN  
WITHDRAWAL FORCE = 1.8N MAX, 0.2N MIN  
DURABILITY = 400 OPERATIONS

**ENVIRONMENTAL:**  
OPERATING TEMPERATURE = -55°C TO +125°C

**PACKING:**  
REEL (AS SHOWN), 15K/REEL

FOR COMPLETE CONNECTOR SPECIFICATION, SEE COMPONENT SPECIFICATION C040XX (LATEST ISSUE)



- NOTES:
- TO BE USED WITH THE FOLLOWING FEMALE HOUSING:  
M80-454XX98 = HOUSING ONLY  
M80-455XX98 = HOUSING + SLOTTED JACKSCREW  
M80-456XX98 = HOUSING + HEX SOCKET JACKSCREW  
M80-457XX98 = HOUSING + REVERSE FIX JACKSCREW  
M80-458XX98 = HOUSING + GUIDE AND BOARD MOUNT  
M80-459XX98 = HOUSING + 10ILOK JACKSCREWS
  - RECOMMENDED WIRE TYPE = BS 3G 210 TYPE A, WIRE 22-28 AWG, WIRE INSULATION Ø0.6mm-Ø1.1mm. STRIP WIRE BY 2.7-3.0mm FOR CRIMPING.
  - RECOMMENDED CRIMP HEIGHTS:  
0.76-0.82mm FOR 22-24 AWG CONTACTS  
0.50-0.56mm FOR 26-28 AWG CONTACTS
  - SUITABLE FOR PROCESSING WITH LEFT SIDE FEED CRIMPING PRESS. CONTACT [datamate@harwin.com](mailto:datamate@harwin.com) FOR DETAILS.
  - CONTACTS ARE AVAILABLE LOOSE, PART NUMBER M80-28300XX FOR 24-22 AWG WIRE AND M80-28400XX FOR 28-26 AWG WIRE, SUITABLE FOR PROCESSING WITH HAND CRIMP TOOL Z80-255.

PART No.	DIMENSION	
	'A'	'B'
M80-25300XX	1.80	1.65
M80-25400XX	1.34	1.00

ORDER CODE: **M80-XXX00XX**

WIRE SIZE: \_\_\_\_\_  
253 = 24-22 AWG (0.22-0.34mm<sup>2</sup>)  
254 = 28-26 AWG (0.08-0.12mm<sup>2</sup>)

FINISH: \_\_\_\_\_  
45 = GOLD ALL OVER  
42 = 100% TIN & GOLD SELECTIVE

SB	7	08.11.17	20816
NAME	ISS.	DATE	C/NOTE
APPROVED: S.BENNETT			
CHECKED: M.PLESTED			
DRAWN: B. M. KENT			
CUSTOMER REF.:			
ASSEMBLY DRG:			

**HARWIN**

[www.harwin.com](http://www.harwin.com)  
[technical@harwin.com](mailto:technical@harwin.com)

THIS DRAWING AND ANY INFORMATION OR DESCRIPTIVE MATTER SET OUT HEREON ARE CONFIDENTIAL AND COPYRIGHT PROPERTY OF THE HARWIN GROUP AND MUST NOT BE DISCLOSED, LOANED, COPIED OR USED FOR MANUFACTURING, TENDERING OR FOR ANY OTHER PURPOSE WITHOUT THEIR WRITTEN PERMISSION.

**TOLERANCES**  
X. = ±1mm  
X.X = ±0.50mm  
X.XX = ±0.10mm  
X.XXX = ±0.01mm  
  
ANGLES = ±5°  
UNLESS STATED

**MATERIAL:**  
SEE ABOVE

**FINISH:** SEE ABOVE

**S/AREA:** \_\_\_\_\_ mm<sup>2</sup>

**TITLE:** DATAMATE TRIO-TEK FEMALE CRIMP CONTACT REELED 24-22 AWG & 28-26 AWG

**DRAWING NUMBER:** **M80-25300XX & M80-25400XX**

SHT 5 OF 5