

## DESCRIPTION

The Impact Elite family of wall luminaires makes an ideal complement to site design. Rugged construction and full cutoff classified optics provide facade and security lighting for light restricted zones surrounding schools, office complexes, apartments, and recreational facilities. U.L. and cUL Listed for wet locations in down mount applications and damp locations in up mounted applications.

Catalog #		Type
Project		
Comments		Date
Prepared by		

## SPECIFICATION FEATURES

### Construction

Two-piece die-cast aluminum housing and removable hinged door frame nests securely for precise tolerance control and repeatability. Hinged door frame inset for clean mating with housing surface and secured via two captive stainless steel fasteners. Optional tamper resistant torx-head fasteners [TR] offer vandal resistant access to the electrical compartment. 1/8" clear, heat and impact resistant tempered flat glass lens combine with molded silicone gasket to seal the integrated optical assembly while ensuring peak optical performance.

### Electrical

Integral hard mount electrical components are secured and grounded within the die-cast aluminum housing for optimal heat sinking and extended component life. Minimum starting temperatures are -40°C (-40°F) for HPS and -30°C (-22°F) for MP.

### Optical

Premium anodized 95% reflective aluminum optical assemblies provide high efficiency Type II distribution. Optional silk screened house side flat glass shield provides decreased wall brightness. All Impact Elite Wall Series luminaires classify as IESNA full cutoff in downlight applications. Available with 10% or 50% uplight options for architectural highlighting of building details.

### Mounting

Gasketed and zinc plated rigid steel mounting attachment fits directly to 4" j-box or wall with the Impact Elite "Hook-N-Lock" system for fast installation and mounting in both traditional downlighting [wet location] or inverted uplighting [damp location] mounting positions. Secured via two captive corrosion resistant allen head set screws concealed from view, but accessible from bottom of fixture.

### Finish

Housing and door are protected with five-stage premium TGIC polyester powder coat paint. Premium TGIC powder coat finishes withstand extreme climate changes while providing optimal color and gloss retention over the fixture's installed life. Standard colors include black, bronze, grey, white, dark platinum and graphite metallic. RAL and custom color matches available. Consult McGraw-Edison Architectural Colors Brochure for complete selection.

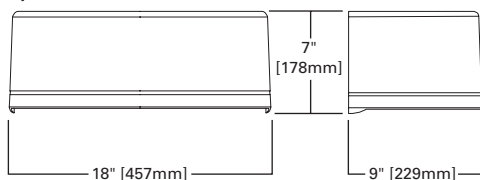
### Efficiency Standards Notice

Select luminaires are manufactured to USA and California efficiency regulations.

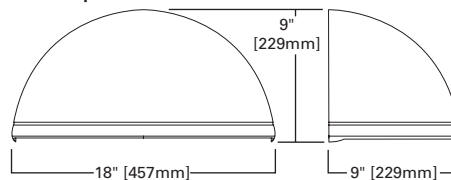


## DIMENSIONS

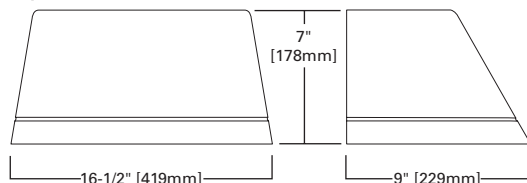
### Cylinder



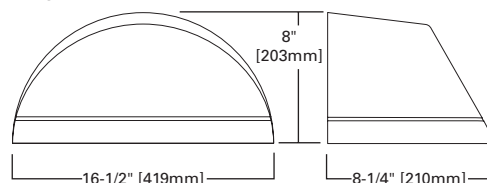
### Quarter Sphere



### Trapezoid



### Wedge



### TECHINAL DATA

UL1598 Listed, CUL Listed  
25°C Maximum Ambient Temperature  
External Supply Wiring 90°C Minimum  
Down Mounted—Wet Location  
Up Mounted—Damp Location

### ENERGY DATA

#### High Reactance Ballast Input Watts

50W HPS HPF (66 Watts)  
50W MP HPF (72 Watts) ⑥  
70W HPS HPF (91 Watts)  
70W MP HPF (90 Watts) ⑥  
100W HPS HPF (130 Watts)  
100W MP HPF (129 Watts) ⑥  
150W HPS HPF (190 Watts)  
150W MP HPF (185 Watts) ⑥

### SHIPPING DATA

Approximate Net Weight:  
18 lbs. (8 kgs.)

## ISC/ISS/IST/ISW IMPACT ELITE

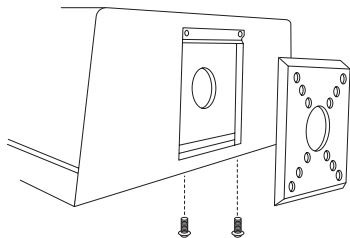
50 - 150W

Pulse Start Metal Halide

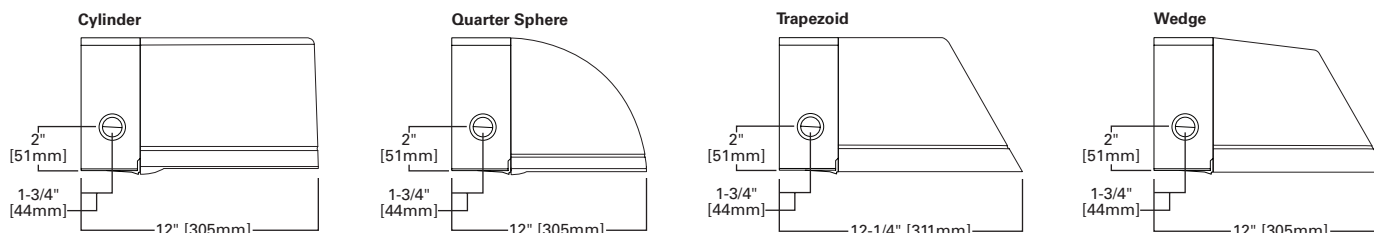
High Pressure Sodium

WALL MOUNT LUMINAIRE

## HOOK-N-LOCK MOUNTING



## THRUWAY BACK BOX



## ORDERING INFORMATION

Sample Number: ISC-150-MP-MT-2S-BZ

Product Family	Lamp Wattage <sup>1</sup>	Lamp Type <sup>3</sup>	Voltage <sup>3</sup>	Distribution	Color
<b>ISC</b> =Impact Elite Small Cylinder <b>ISS</b> =Impact Elite Small Quarter Sphere <b>IST</b> =Impact Elite Small Trapezoid <b>ISW</b> =Impact Elite Small Wedge	<b>Pulse Start Metal Halide</b> 50=50W <sup>2</sup> 70=70W <sup>2</sup> 100=100W 150=150W  <b>High Pressure Sodium</b> 50=50W <sup>2</sup> 70=70W <sup>2</sup> 100=100W 150=150W	<b>MP</b> =Pulse Start Metal Halide <b>HPS</b> =High Pressure Sodium	120=120V 208=208V 240=240V 277=277V 347=347V 480=480V <sup>4</sup> MT=Multi-Tap <sup>5</sup> TT=Triple-Tap <sup>5</sup>	<b>2S</b> =Type II Segmented	<b>AP</b> =Grey <b>BZ</b> =Bronze <b>BK</b> =Black <b>DP</b> =Dark Platinum <b>GM</b> =Graphite Metallic <b>WH</b> =White
Options (Add as Suffix)			Accessories (Order Separately) <sup>14</sup>		
<b>F</b> =Single Fuse (120, 277, or 347V. Must Specify Voltage) <b>FF</b> =Double Fuse (208, 240 or 480V. Must Specify Voltage) <b>P</b> =Button Photocontrol (120, 208, 240 or 277V. Must Specify Voltage) <b>L</b> =Lamp Included <b>TR</b> =Tamper Resistant Fasteners <b>UPL10</b> =10% Uplight <b>UPL50</b> =50% Uplight <sup>6</sup> <b>HS</b> =House Side Shield Glass <b>PL</b> =Polycarbonate Lens <sup>7</sup> <b>Q</b> =Quartz Restrike (1) T4 Lamp <sup>8</sup> <b>EM</b> =Emergency Quartz Restrike (1) T4 Lamp with Time Delay Relay <sup>8</sup> <b>EM/SC</b> =Emergency Separate Circuit (1) T4 Lamp <sup>8,9</sup> <b>QMR</b> =Quartz Restrike (1) MR16 Lamp <sup>10</sup> <b>EMMR</b> =Emergency Quartz Restrike (1) MR16 Lamp with Time Delay Relay <sup>10</sup> <b>EM/SC/MR</b> =Emergency Separate Circuit (1) MR16 Lamp <sup>8,10</sup> <b>EM/SC/12V</b> =Emergency Separate Circuit 12V Low Voltage (1) MR16 Lamp <sup>8,11</sup> <b>2EM/SC/12V</b> =Emergency Separate Circuit 12V Low Voltage (2) MR16 Lamps <sup>8,11</sup> <b>EMI40-XXX</b> =Emergency Cold Temperature (UL924 Listed) Power Pack -18°C/0°F, (1) Compact Fluorescent Lamp <sup>12</sup> <b>CFEM-XXX</b> =Emergency Compact Fluorescent Power Pack (UL924 Listed) (1) Compact Fluorescent Lamp. 0°C/32°F <sup>13</sup> <b>2EMI40-XXX</b> =Emergency Cold Temperature Power Pack (UL924 listed), -18°C/0°F, (2) Compact Fluorescent Lamps with Back Box Matching Housing Finish <sup>12</sup> <b>2CFEM-XXX</b> =Emergency Compact Fluorescent Power Pack (UL924 listed) 0°C/32°F, (2) Compact Fluorescent Lamps, with Back Box Matching Housing Finish <sup>13</sup>			<b>MA1254-XX</b> =Thruway Back Box - Impact Elite Trapezoid <b>MA1255-XX</b> =Thruway Back Box - Impact Elite Cylinder <b>MA1256-XX</b> =Thruway Back Box - Impact Elite Quarter Sphere <b>MA1257-XX</b> =Thruway Back Box - Impact Elite Wedge		

## NOTES:

- Medium-base pulse start metal halide is standard in 150W and below.
- Not available with 480V.
- Consult an Eaton representative for lamp/ballast type/voltage compatibility.
- Pulse start metal halide 150W 480V requires high reactance to meet EISA requirements.
- Multi-tap is 120/208/240/277V wired 277V. Triple-tap ballast is 120/277/347V wired 347V.
- Not available with EMI40 or CFEM.
- Down lighting position only.
- (1) 120V Lamp, 100W maximum quartz lamp. Utility power may need to cycle to allow HID lamp to cool in warm climates. Not available with Compact Fluorescent Option. Lamp supplied by others.
- Leads out of the back of the unit for auxiliary power.
- (1) or (2) 120V Lamps. GU10 base, 50W maximum each. Lamps supplied by others.
- (1) or (2) 12V bi-pin lamp, socket GU5.3 base, 35W maximum. Power supplied by low voltage DC source (supplied by others). Lamps supplied by others.
- Specify 120 or 277V, (-18°C) minimum temperature. Not available with UPL10 or UPL50.
- Specify 120 or 277V, (0°C) minimum temperature. Not available with UPL10 or UPL50.
- Replace "XX" with color designation.