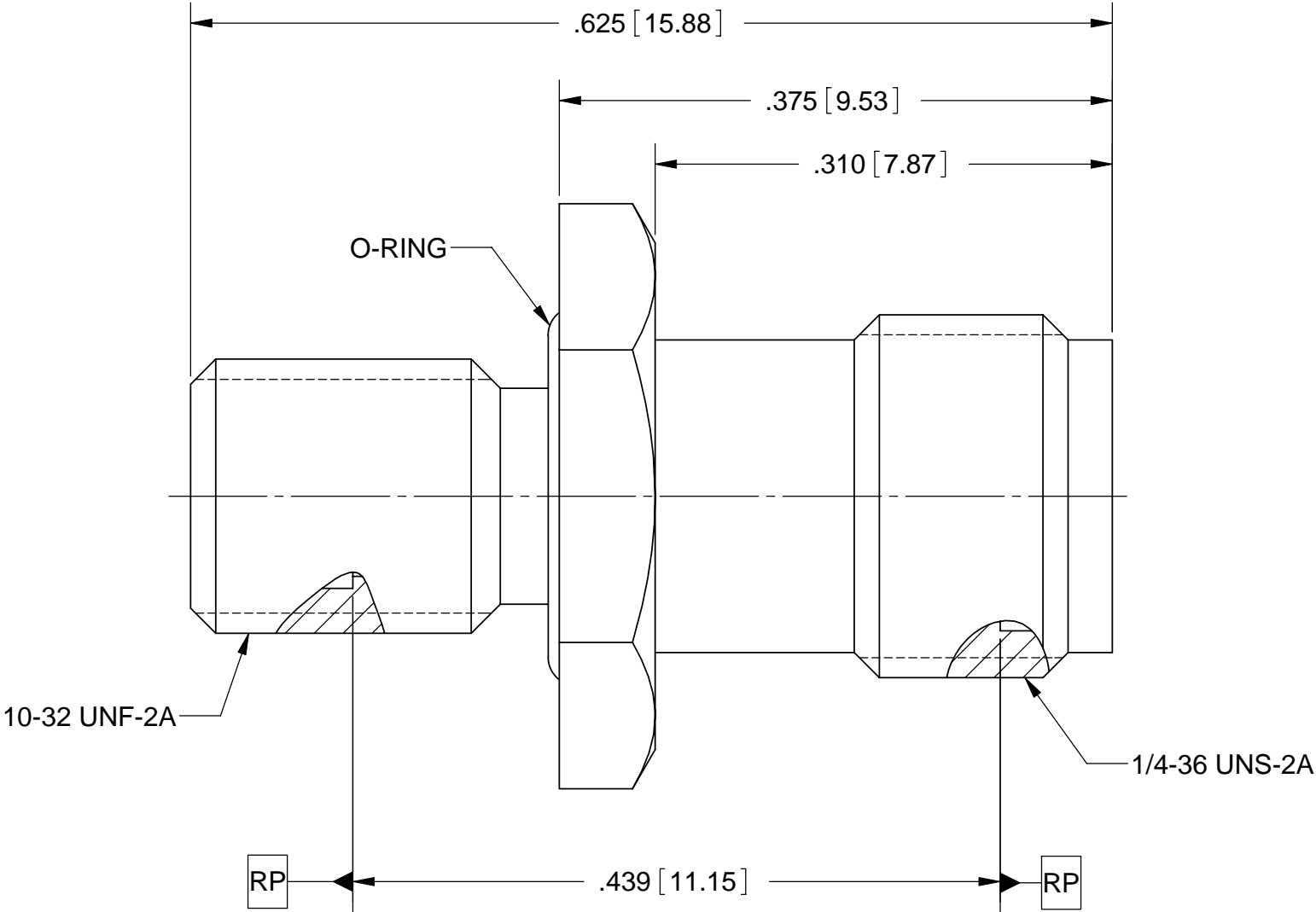
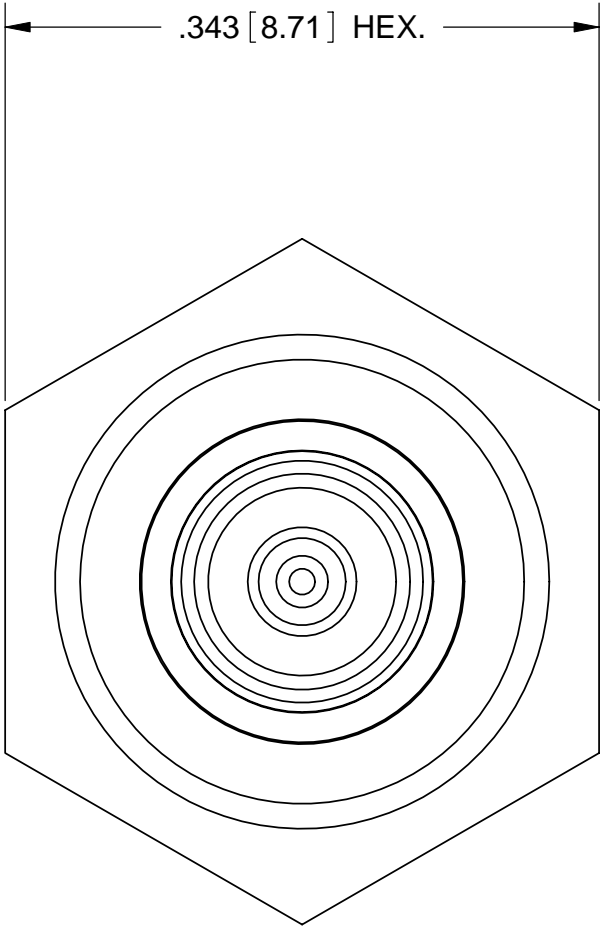


PRODUCT DATA DRAWING

REVISION HISTORY			
REV	DESCRIPTION	DATE	APPROVED
-	DCN 36626	03/09	STW



MATERIAL:

- BODY:

CONTACT:

INSULATOR:

O-RING:
- STAINLESS STEEL PER AMS-5640,  
ALLOY UNS S30300, TYPE 1

BERYLLIUM COPPER PER ASTM B196,  
ALLOY No. UNS C17300, TD04

PTFE PER ASTM D1710, TYPE I, GRADE 1, CLASS B

SILICONE RUBBER PER A-A-59588, CLASS 2B, GRADE 50/60

FINISH:

- BODY:

CONTACT:
- PASSIVATED PER AMS-2700.

GOLD PER ASTM B488, TYPE II,  
CODE C, CLASS 1.27, OVER NICKEL  
PER AMS-QQ-N-290, CLASS 1, .00005" MIN.

PERFORMANCE:

- IMPEDANCE:

FREQ. RANGE:
- 50 OHMS

DC TO 18.0 GHz

MATERIAL:	SEE NOTES	DIMENSIONS ARE IN INCHES TOLERANCES:  FRACTIONAL: $\pm 1/64$ ANGULAR: X° $\pm 1'0''$ 	
-----------	-----------	--	--