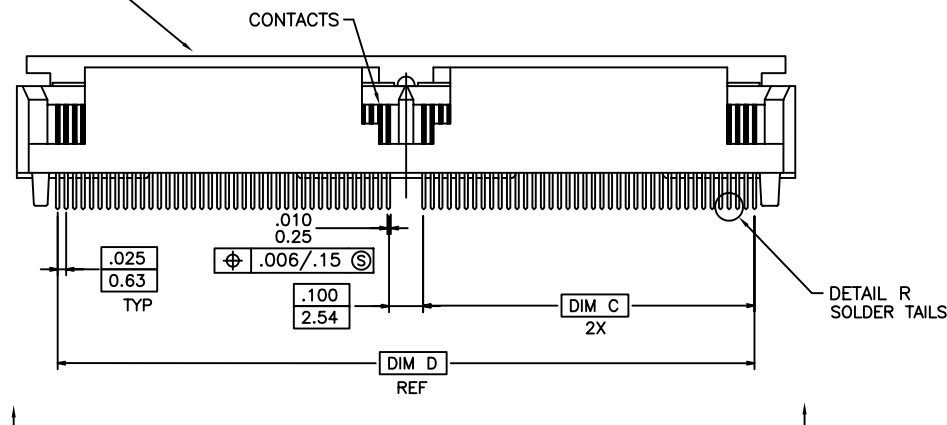
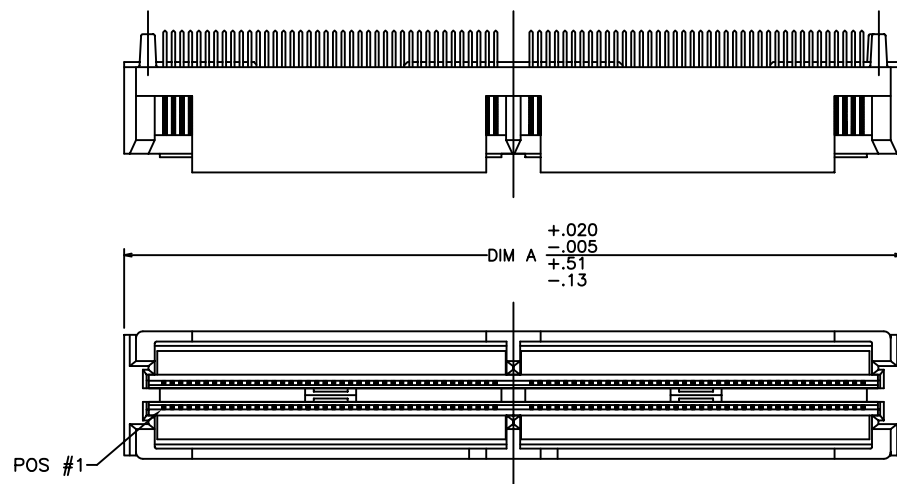
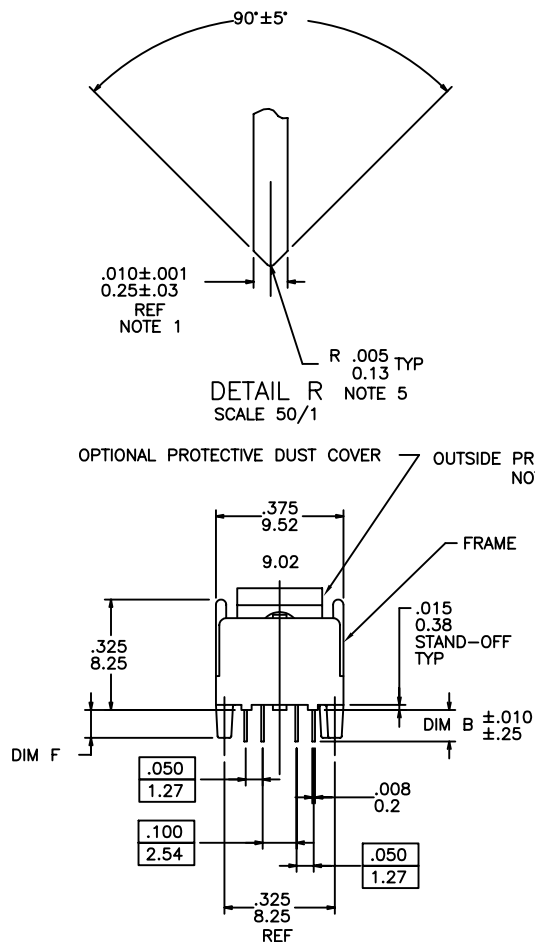




FCIconnect.com

Copyright FCI

PRODUCT NO.
SEE TABLE

VIEW K (SHEET 2)

mat'l. code				surface		tolerance		projection		product family	
				ISO 1302		ISO 406 ISO 1101		INCH/MM		MICROPAX	
ltr	ecn no	dr	date	tolerances unless otherwise specified						title	
K	V31907	MRC	11/4/93	angles	linear	.XX±.01/.3				MICROPAX .025M VERT.	
L	V32226	MRC	12/22/93			.XXX±.005/.13				PLUG DOUBLE MODULE	
M	V71417	MAP	10/6/97	0°±2'		.XXX±.0020/.051		scale 1:1		dwg no	
N	V12555	CRG	11/8/01	dr	L.POTTEIGER	4/16/91				sheet 1 of 2 size	
P	V20402	MEM	3/12/02	enr	T.LEMKE	4/16/91				89649	
R	M06-0222	AGS	6/9/06	chr	T.LEMKE	4/16/91				A3	
				appd	T.LEMKE	4/16/91				type Product Customer Drawing	
sheet	revision	R	R								
index	sheet	1	2								

form: A3

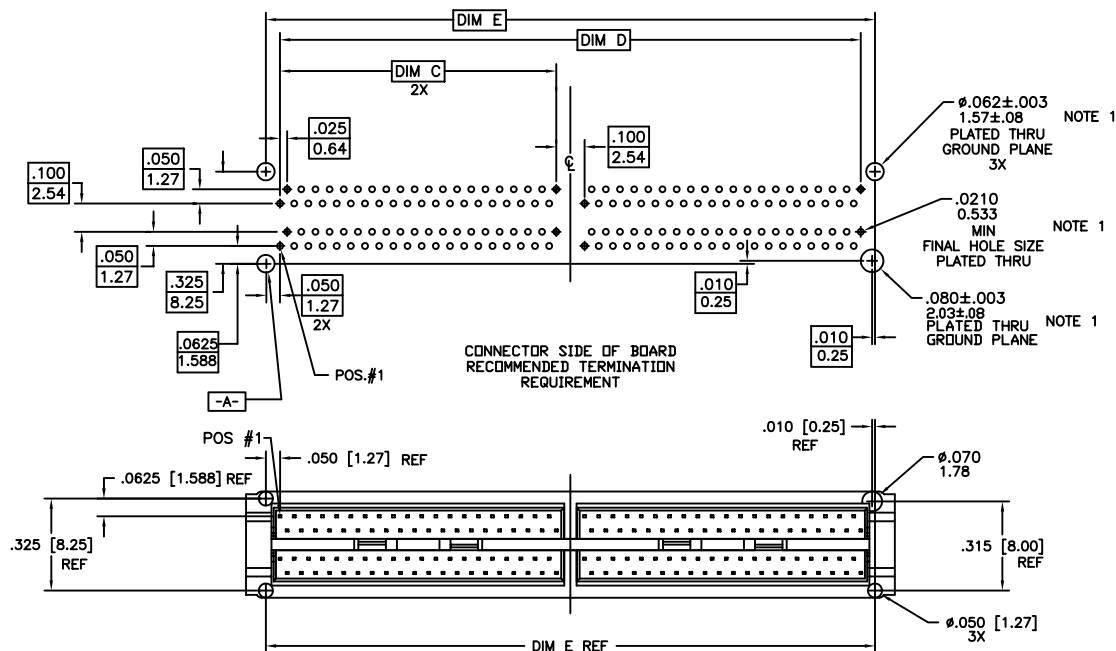
PDM: Rev:R

STATUS Released

Printed: Jul 22, 2010

PRODUCT NO	NO. OF CONTACTS	DIM A	DIM B	DIM C	DIM D	DIM E	DIM F	BOARD THICKNESS	DUST CAP
89649-001	160	2.290/58.17	.092/2.34	.975/24.76	2.050/52.07	2.150/54.61	.082/2.08	.062/1.58	NO
89649-002			.155/3.94				.144/3.66		

NOTE 3

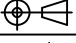



BOTTOM VIEW K

NOTES:

- ALL BOARD HOLES $\varnothing .006/.15 \text{ } \textcircled{S} \text{ } \textcircled{A} \text{ } \textcircled{S}$
- MATERIALS:
DIELECTRIC: LCP
CONTACTS: PHOS BRZ
FRAME: ZINC ALLOY #3
- PLATING:
SOLDER TAILS: 150u"/3.81um Sn Pb
FRAME: 100u"/2.54um Ni
CONTACT: 30u"/.76um GXT OVER 50u"/1.27um Ni

LEAD FREE PLATING:
SOLDER TAILS: 150u"/3.81um Sn
FRAME: 100u"/2.54um Ni
CONTACT: 30u"/.76um GXT OVER 50u"/1.27um Ni
- ADD "LF" SUFFIX AT THE END OF PART NUMBER FOR LEAD FREE OPTION.
- IF "LF" P/N THE PRODUCT MEETS EUROPEAN UNION DIRECTIVES AND OTHER COUNTRY REGULATION AS DIRECTIVES AND OTHER COUNTRY REGULATION AS
- DO NOT REMOVE OPTIONAL PROCESSING CAP UNTIL SOLDERING IS COMPLETED.
- .002/.05 MAX BURR PERMITTED.

mat'l. code				surface ISO 1302 <input checked="" type="checkbox"/> ISO 406 ISO 1101		projection 	product family MICROPAX	
ltr	ecn	no	dr	date	tolerances unless otherwise specified		title	
R					angles linear .XX±.01/.3 .XXX±.005/.13 .XXXX±.0020/.051	INCH/MM	MICROPAX .025M VERT. PLUG DOUBLE MODULE	
					0'±2'	scale 1:1	dwg no sheet2 of 2 size	
			dr	L.POTTEIGER	4/16/91		89649 A3	
			enr	T.LEMKE	4/16/91		type Product Customer Drawing	
			chr	T.LEMKE	4/16/91			
			appd	T.LEMKE	4/16/91			
sheet index	revision sheet							

form: A3

Mouser Electronics

Authorized Distributor

Click to View Pricing, Inventory, Delivery & Lifecycle Information:

FCI:

89649-001