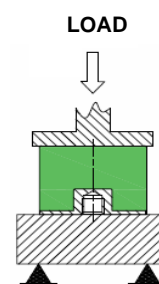
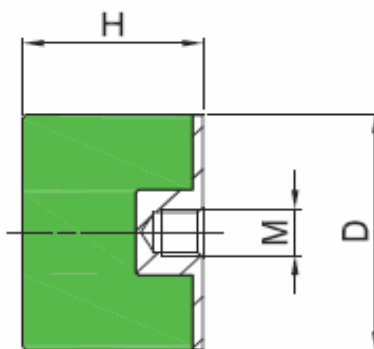
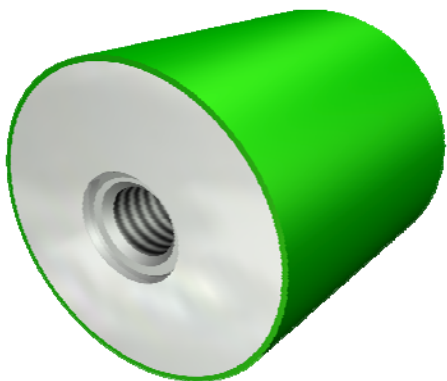


## Bobbin Mount End Stop - Type DE (Female)



The Type DE Bobbin Mount End Stops are designed to be used on a wide range of applications to prevent shocks and over-loading thanks to their progressive absorption.

**They are manufactured from Natural Rubber in a variety of hardnesses to suit the application, and have a zinc plated steel end section with either welded or cold formed threads.**

**This range comes with a Female thread on one end that is captive to avoid compromise to the integrity or functionality of the Rubber section.**

[illegible]