

Visual Signals
EXPLOSION PROOF
GRP BEACON

**Lens Guard not
supplied as standard**

Typical applications are Oil and Gas, On-shore and Offshore, Chemical, Petrochemical, Refineries & Marine locations etc.

These beacons have a choice of two types of light source: either Xenon (strobe) with multiple flash rate and power ratings or an LED array with three status type indication options and two power ratings. The design allows for termination inside the enclosure.

The units also have the ability to be fitted with a telephone initiation function and can be used as the second ring output indicator for telephones when installed in very noisy environments.

- Approved by ATEX and CQST
 - IMETRO and IECEX (Pending)
- ATEX: II 2G Exd IIC T4 - T6
(incorporating IIA & IIB)
- Zones 1&2, Zones 21&22 (Pending)
- Conforms to EN (IEC) 60079-0
EN (IEC) 60079-1 and EN54
- 360° light output
around the vertical axis
- Dustproof & Weatherproof

BC150 Series > Ordering Information

		Lens Colour	Beacon Type	Power (Xenon)*	Power (LED)*	Voltage	Duty Label	Tag Label	Lens Guard	Cable Entry	Finish Colour	Telephone Initiated
Standard Product Selection	BC150	Y = Amber	X = Xenon	05 = 5J	05 = 5W	DC 12 - 48v	Y = Yes	Y = Yes	Y = Yes	A = M20	RD = Red	Y = Yes
		R = RED		10 = 10J				N = No	N = No	B = M25	YW = Yellow	
		B = BLUE	15 = 15J		10 = 10W	AC1 12 - 48v				C = 1/2 NPT	BU = Blue	
		G = Green								L = LED	21 = 21J	AC2 100 - 240v
		C = Clear		O = Other				O = Other	OR = Other			
		O = Other										

Follow the chart (right) to

* Choose either Xenon power or LED power only

Follow the chart (right) to generate your part code.

MODEL CONFIGURATOR (By using the table above, complete this box sequence to select your required beacon).

BC150						Y					
Lens Colour	Beacon Type	Power (Xenon)*	Power (LED)*	Voltage	Duty Label	Tag Label	Lens Guard	Cable Entry	Finish Colour	Telephone Initiated	

* Choose either Xenon power or LED power only

Note: All customers orders will be confirmed in writing. Care should be taken that the correct code has been ordered as be-spoke manufactured products cannot be returned for exchange or credit later.

Kg 3.8

 °C -40+70

IP 66/67



GRP

APPROVALS and CONFORMITIES



Explosion Proof Beacon > GRP

BC150 Series

General Information

EX CODE: Exd IIC T4 - T6

CERTIFICATION: ATEX, CQST

TYPE: Xenon or LED Visual Beacon

Xenon Working Status		Xenon - Flashing			
Flash Rate		Selectable from 60-180 Flashes per Minute			
Power Rating	5 J (10W) Max	10 J (15W) Max	15 J (20W) Max	21 J (25W) Max	
Effective Candela	109	293	395	424	

LED Working Status		LED - Flashing / Rotating / Static	
Flash Rate		Selectable from 60-120 Flashes per Minute	
Rotation Rate		Selectable from 60-120 Revolutions per Minute	
Static Mode		Permanently ON (ie Steady)	
Power Rating	5 W	10 W	
Effective Candela	128	312	

MULTIPLYING FACTOR FOR COLOURED LENSES:

Yellow (Amber) x 0.51, Red x 0.15, Blue x 0.12, Green x 0.49, Clear x 0

Mechanical Specifications

MATERIAL: GRP (Glass Reinforced Plastic)

LENS COLOURS: Yellow (Amber), Red, Blue, Green, Clear or Other (specify)

ENCLOSURE COLOUR: Red (RAL3001), Yellow (RAL1003)
Blue (RAL5005), Black (RAL9004)

WEIGHT: 3.8 Kg / 8.38 lb

DIMENSIONS: Length/Width: 150mm / 5.91" Height: 212mm / 8.35"

INGRESS PROTECTION: IP 66 & 67

AMBIENT TEMPERATURE: -40 to +70

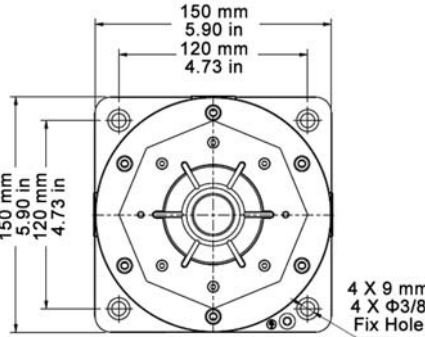
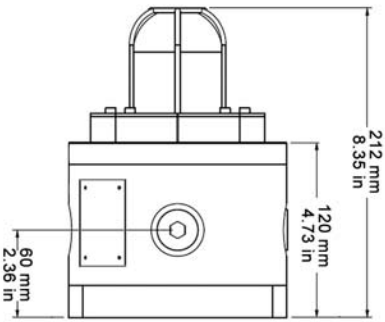
HUMIDITY: ≤ 95% RH

Electrical Specifications

POWER SUPPLY: 12-48v Dc, 12-48v Ac or 100-240v Ac

TERMINATION: Accepts upto ≤ 2.5mm² incorporating rising clamp protectors

CABLE ENTRY: 4 x M20, M25, 1/2"NPT, 3/4"NPT or Other (Specify)



Spareparts & Accessories

Cage Guard S/S	05/50060110109
Xenon PCB (DC)	05/50060400621
Xenon PCB (AC)	05/50060400622
LED PCB (DC)	05/50060400611
LED PCB (AC)	05/50060400612
M20 Stainless Steel Exd Blind Plug	05/55100110920
M25 Stainless Steel Exd Blind Plug	05/55100110925
1/2" NPT Stainless Steel Exd Blind Plug	05/55100110821
3/4" NPT Stainless Steel Exd Blind Plug	05/55100110843
M20 Stainless Steel Exd Cable Gland	05/CG SM020X
M25 Stainless Steel Exd Cable Gland	05/CG SM025X
1/2" NPT Stainless Steel Exd Cable Gland	05/CG SN012X
3/4" NPT Stainless Steel Exd Cable Gland	05/CG SN034X

BC150 Series > Working Current

Xenon						LED					
ENERGY	12v Dc	24v Dc	48v Dc	110v Ac	220v Ac	POWER	12v Dc	24v Dc	48v Dc	110v Ac	220v Ac
5 J	460 mA	280 mA	140 mA	60 mA	35 mA	5 W	530 mA	260 mA	120 mA	80 mA	40 mA
10 J	850 mA	490 mA	250 mA	100 mA	60 mA	10 W	1100 mA	530 mA	240 mA	160 mA	80 mA
15 J	1200 mA	700 mA	360 mA	140 mA	80 mA						
21 J	N/A	960 mA	480 mA	180 mA	110 mA						