

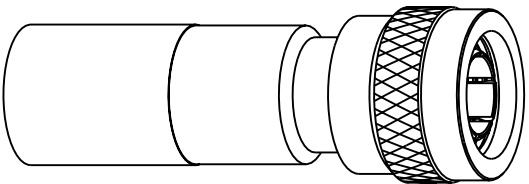
NOTES:

1. MATERIALS OF CONSTRUCTION:
SHELL, BODY, BARREL, RETAINER RING & FERRULE = BRASS (QQ-B-626), NICKEL PLATED
CONTACT PIN = PHOSPHOR BRONZE, GOLD PLATED
RING = DELRIN, NATURAL
WASHER = BRASS (QQ-B-613), NICKEL PLATED
INSULATOR = TEFLON PER MIL-P-19468
GASKET = SILICONE RUBBER, COLOR RED
2. CRIMPED FERRULE = HEX CRIMP SIZE .429
CRIMPED CONTACT PIN = HEX CRIMP SIZE .118

31-6033

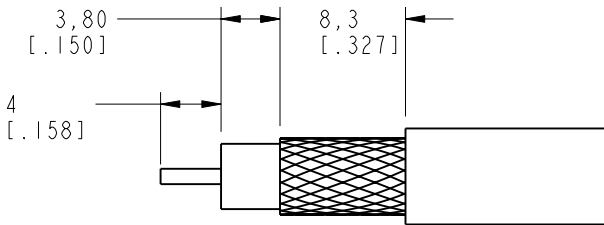
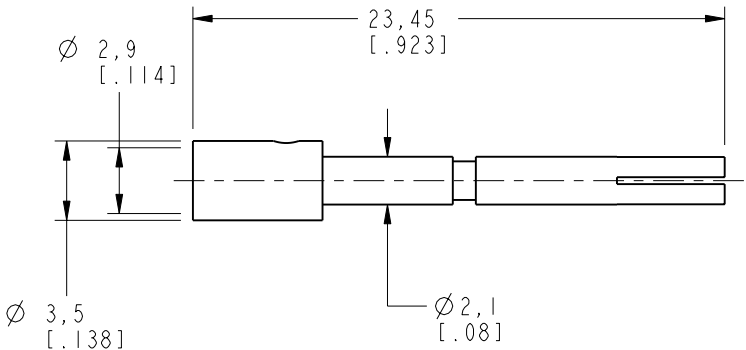
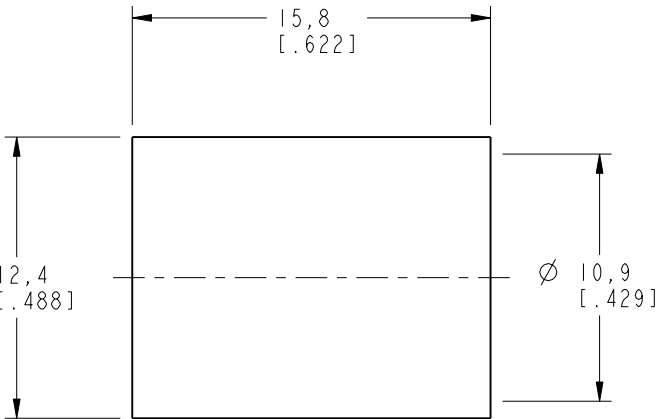
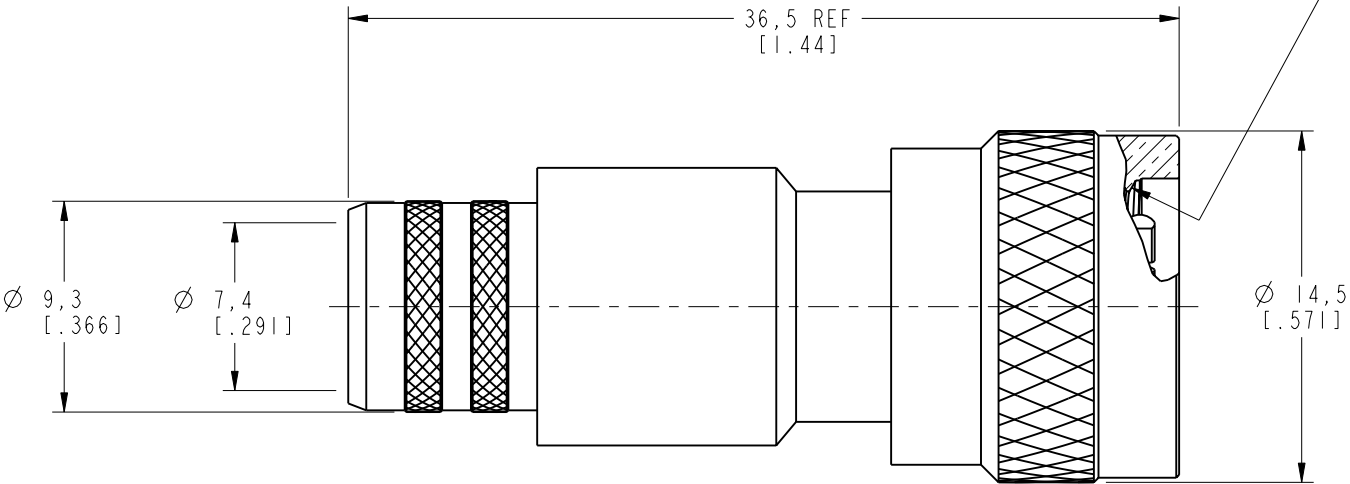
REVISIONS

DRAWING NO.	REV	DESCRIPTION	DATE	ECO	APPR
THIRD ANGLE PROJ. 	A	RELEASE TO MFG.	5/15/00	43358	CPM



SCALE 1.500

7/16-28UNEF-2B THREAD



RECOMMENDED CABLE
STRIPPING DIMENSIONS
SCALE 2.000

CUSTOMER OUTLINE DRAWING

ALL OTHER SHEETS ARE FOR INTERNAL USE ONLY

UNLESS OTHERWISE SPECIFIED, DIMENSIONS ARE IN INCHES AND TOLERANCES ARE: 0.5 - 6mm ±0.2mm	MATERIAL	DRAWN C. McGRATH	DATE 03-May-00	TITLE TNC REVERSE POLARITY CRIMP PLUG (FOR BELDEN 8214, 9913)		Amphenol Amphenol Corporation Communication and Network Products Division Danbury, CT U.S.A. 06810	
		ENGINEER T. AUBIN	DATE 03-May-00				
		APPROVED T. AUBIN	DATE 10-May-00				
		REFERENCE EAR 967551-0 GEN# 31-6034_ASSY					
NOTICE - These drawings, specifications, or other data (1) are, and remain the property of Amphenol Corp. (2) must be returned upon request; and (3) are confidential and not to be disclosed to any person other than those to whom they are given by Amphenol Corp. The furnishing of these drawings, specifications, or other data by Amphenol Corp., or to any other person to anyone for any purpose is not to be regarded by implication or otherwise in any manner licensing, granting rights or permitting such holder or any other person to manufacture, use or sell any product, process or design, patented or otherwise, that may in any way be related to or disclosed by said drawings, specifications, or other data.	CAD FILE I:\TNC\31-6033		CODE ID 74868	DWG SIZE B	DRAWING NO. 31-6033		REV A

Mouser Electronics

Authorized Distributor

Click to View Pricing, Inventory, Delivery & Lifecycle Information:

[Amphenol:](#)

[31-6033](#)