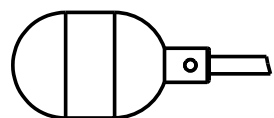


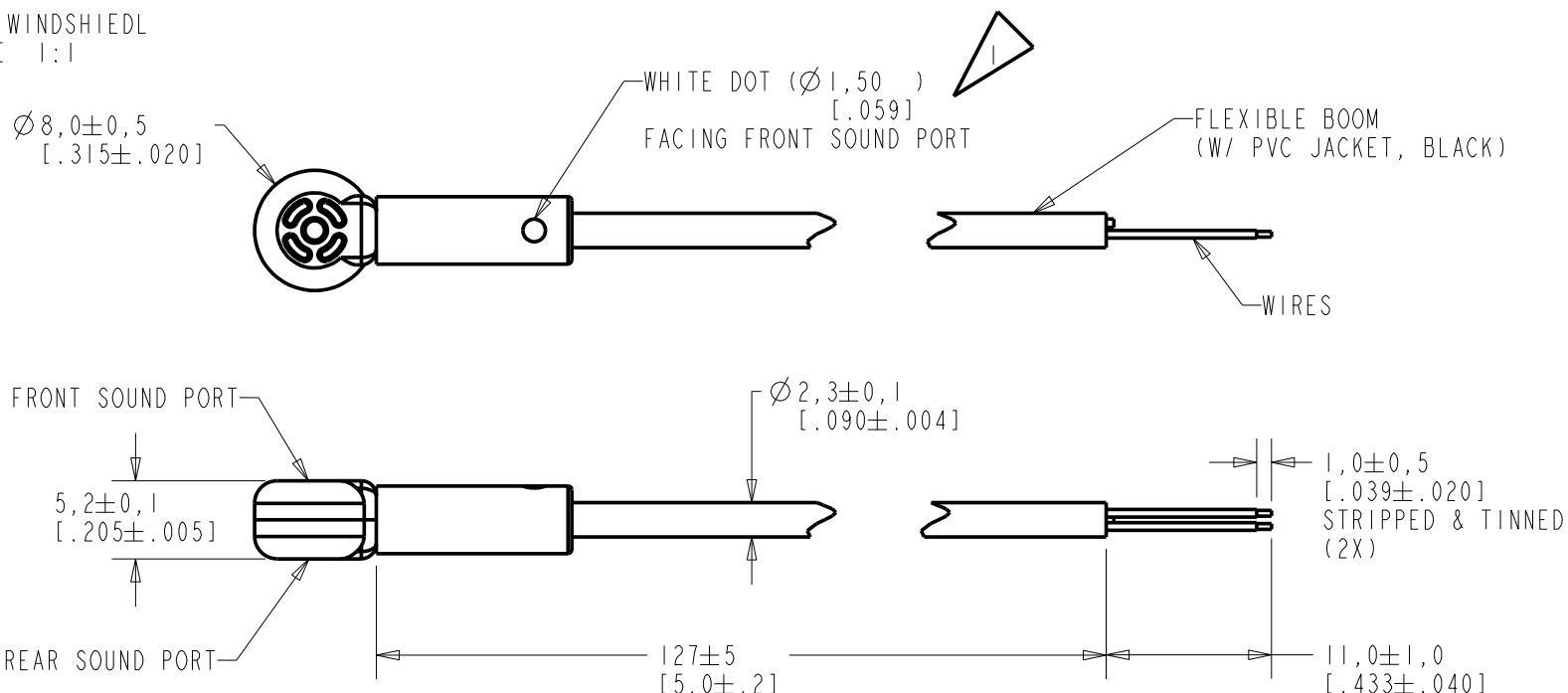
FB-AE-30389-000

SHT 1.1

THE FRONT SOUND PORT IS ADJACENT TO THE MODEL NUMBER IDENTIFICATION.



VIEW WITH WINDSHIELD  
SCALE 1:1

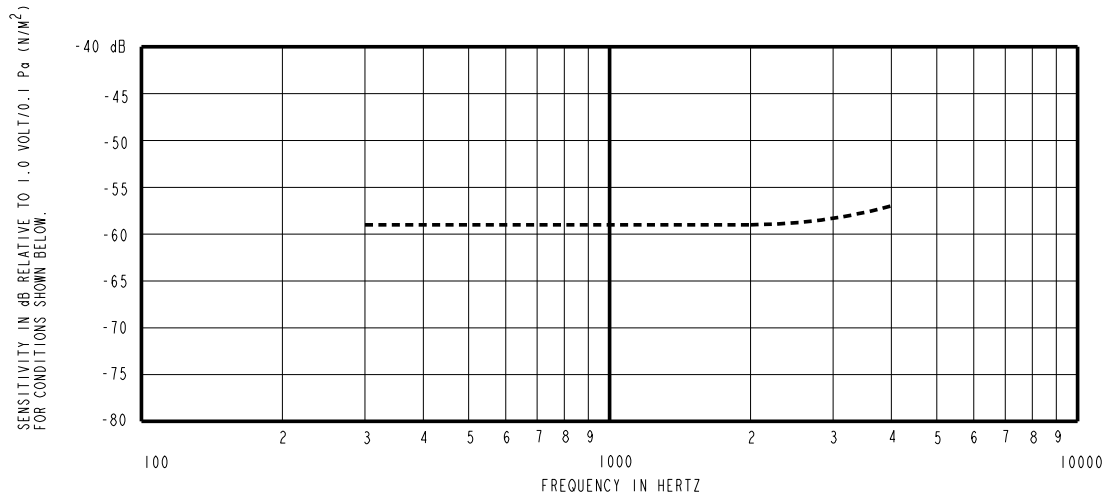


WIRE COLOR			WEIGHT GRAMS
+ve	OUTPUT	-ve	
RED	-	BLACK	t.b.d.

DIMENSIONS IN MILLIMETERS [INCHES]

Revision	C.O. #	Implementation Date	RELEASE LEVEL	REVISION	
B	CI0107741	7-15-08	Active	B	
A	CI0107378	6-3-08			
SCALE: 2:1			DR. BY TT	DATE 6-3-08	
DO NOT SCALE DRAWING			CK. BY GJP	DATE 6-30-08	
TITLE: BOOM MICROPHONE			FB-AE-30389-000		
OUTLINE DRAWING			SHT 1.1	APP. BY GJP	DATE 6-30-08

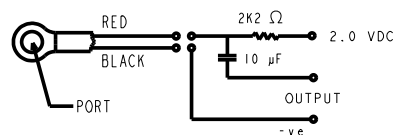
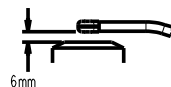
**KNOWLES ELECTRONICS**  
ITASCA, ILLINOIS U.S.A.



FREQUENCY	SENSITIVITY			DEVICE CONFORMITY	
	MIN.	NOM.	MAX.	RANGE OF DEVIATION FROM 1KHz	
300	---	-59.0	---	-3.0	+3.0
1000	-62.0	-59.0	-56.0	-0.0	+0.0
4000	---	-57.0	---	-3.0	+3.0

NOTES:

- MICROPHONE TO BE FUNCTIONAL WITH 10 VDC SUPPLY.
- SENSITIVITY VALUES INDICATED ON THIS SPECIFICATION ARE VALID AT 50% HUMIDITY.
- TEST CONDITIONS:  
HEAD OF BOOM EXPOSED TO 74 dB SPL SWEPT  
SOUND FIELD AT 6mm FROM VOICE APERTURE.  
ARTIFICIAL VOICE:  
B & K 4227 MOUTH SIMULATOR.
- FOR MICROPHONE CAPSULE SPEC. SEE MB6022NSC-0C.



LEAD IDENTIFICATION  
& TEST CIRCUIT

**KNOWLES ELECTRONICS**  
ITASCA, ILLINOIS U.S.A.

Revision	C.O. #	Implementation Date	RELEASE LEVEL	REVISION
B	C10107741	7-15-08	<b>Active</b>	<b>B</b>
A	C10107378	6-3-08		
WHEN TEST LIMITS ARE USED TO ESTABLISH INCOMING INSPECTION ACCEPTANCE/REJECTION CRITERIA, CORRELATION OF TEST EQUIPMENT WITH KNOWLES IS ALSO REQUIRED FOR ELIMINATION OF EQUIPMENT AND TEST METHOD VARIATION			DR. BY	DATE
TITLE: <b>BOOM MICROPHONE</b> <b>FB-AE-30389-000</b> PERFORMANCE SPECIFICATION <b>SHT 2.1</b>			TT	6-3-08
			CK. BY	DATE
			GJP	6-30-08
			APP. BY	DATE
			GJP	6-30-08

# Mouser Electronics

Authorized Distributor

Click to View Pricing, Inventory, Delivery & Lifecycle Information:

[Knowles Acoustics:](#)

[FB-AE-30389-000](#)