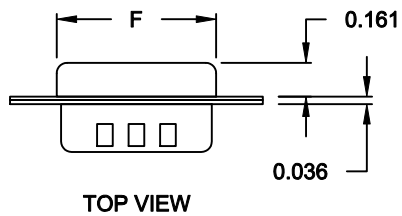
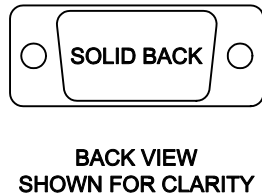
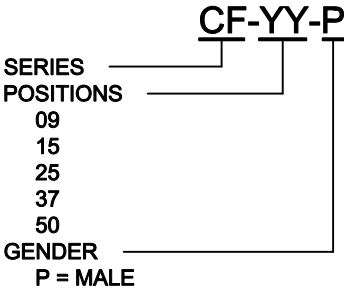
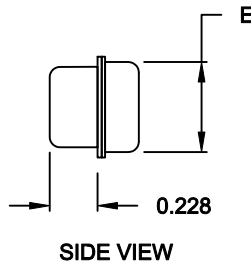
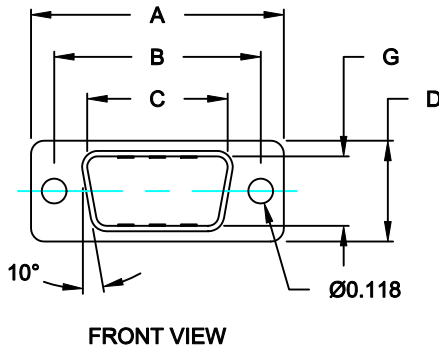


MATERIAL:
SHELL: STEEL, TIN PLATED


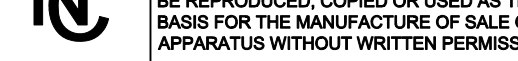
**NOTE: COVER IS USED TO COVER FEMALE CONNECTORS



| No. OF PINS | DIMENSIONS (IN.) | | | | | | |
|-------------|------------------|-------|-------|-------|-------|-------|-------|
| | A | B | C | D | E | F | G |
| 9 | 1.205 | 0.984 | 0.669 | 0.480 | 0.429 | 0.760 | 0.331 |
| 15 | 1.535 | 1.311 | 0.996 | 0.480 | 0.429 | 1.083 | 0.331 |
| 25 | 2.079 | 1.850 | 1.535 | 0.480 | 0.429 | 1.630 | 0.331 |
| 37 | 2.724 | 2.500 | 2.181 | 0.480 | 0.429 | 2.278 | 0.331 |
| 50 | 2.622 | 2.406 | 2.083 | 0.598 | 0.535 | 2.182 | 0.438 |



DO NOT SCALE FROM DRAWING

| | | | | | |
|--|---|--------------------|------------------|-------------------|----------|
|  | THESE DRAWINGS AND SPECIFICATIONS ARE THE PROPERTY OF NorComp AND SHALL NOT BE REPRODUCED, COPIED OR USED AS THE BASIS FOR THE MANUFACTURE OF SALE OF APPARATUS WITHOUT WRITTEN PERMISSION. | DRAWN: C. SMITH | | DATE: 01-17-08 | |
| | | CHECKED: | | DATE: | |
|  | | | SCALE: 1 : 1 | SHEET 1 OF 1 | REV 3 |
| | | | DWG NO. CFYYP | | |

RoHS COMPLIANT