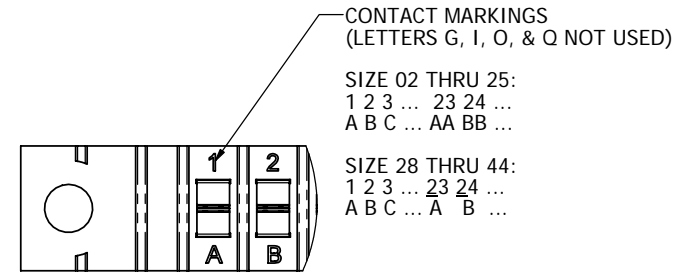
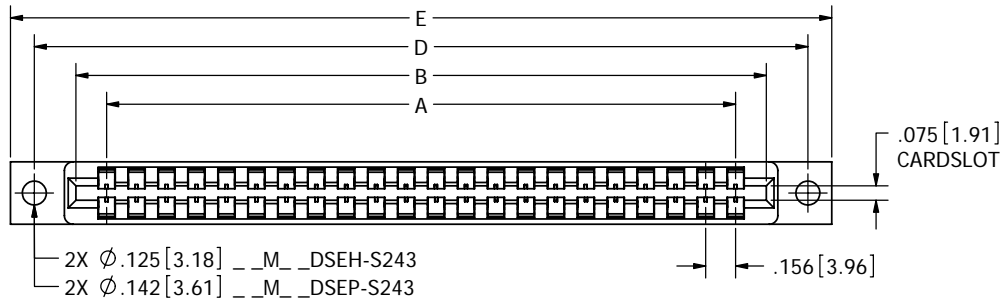
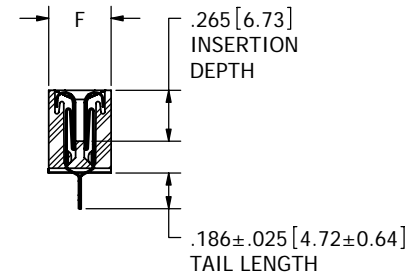


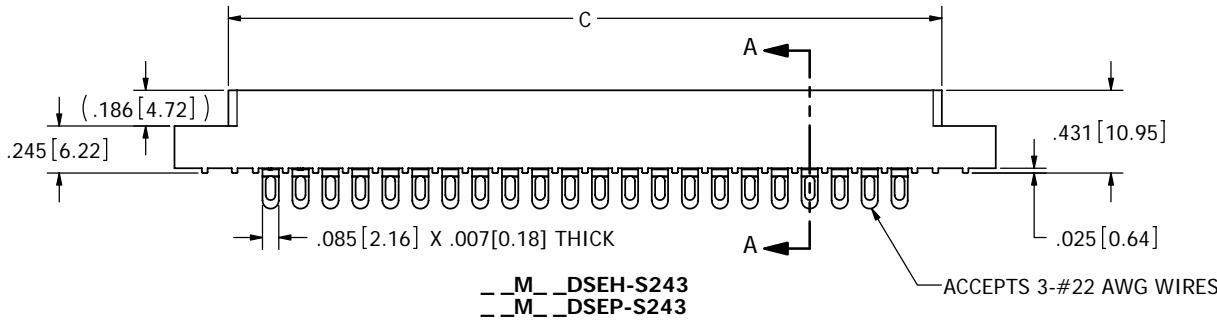
REVISIONS				
REV.	ECO. NO	DESCRIPTION	DATE	BY
A	604	INITIAL RELEASE	05/02/2005	TT
B	898	ADDED WIDTH DIMENSION	1/12/2006	HT
C	1375	UPDATED FORMAT. ADDED ALL TABULATIONS. CORRECTED S# CALL OUT FROM S13 TO S243 IN TABULATION BLOCK	6/6/2007	MNH
D	1390	ADD CURRENT RATING TO F MATERIAL	6/18/2007	MNH
E	1656	ADDED 'P' MOUNTING	4/8/2008	MNH
F	1662	UPDATE DRAWING FORMAT & PART NUMBER CODING	4/18/2008	VJ



CONTACT ID  
SCALE 4:1



SECTION A-A



NOTES:

- INSULATOR MATERIAL: SEE PART NUMBER CODING.
- CONTACT MATERIAL: SEE PART NUMBER CODING.
- PLATING: SEE PART NUMBER CODING.
- TEMPERATURE: SEE PART NUMBER CODING.
- PROCESSING TEMP: SEE PART NUMBER CODING.
- UL FLAMMABILITY RATING: 94V-0.
- VOLTAGE RATING: 1800 VDC MINIMUM AT SEA LEVEL.
- CURRENT RATING: SEE PART NUMBER CODING.
- VOLTAGE DROP: 30 MILLI VOLT AT RATED CURRENT.
- INSULATION RESISTANCE: 5000 MEGA OHMS.
- CONNECTOR IDENTIFICATION: THE PART SHALL BE MARKED WITH A PART NUMBER AND BARCODE.
- BOARD THICKNESS ACCOMMODATED: .062 ± .008 [1.57 ± 0.20].
- BOARD INSERTION FORCE: 16 OZ MAX PER CONTACT PAIR WHEN USING A .062 [1.57] TEST BLADE. INTERNAL INSPECTION TO BE PER SULLIN'S WORK INSTRUCTION W17.3-01.
- BOARD WITHDRAWAL FORCE: 1 OUNCE MINIMUM PER CONTACT PAIR USING .062 [1.57] PCB.
- MODIFICATION: CRIMP BOTH ROWS TO CENTER.

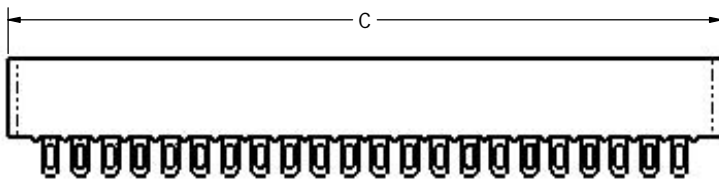


RoHS COMPLIANT

CUSTOMER COPY

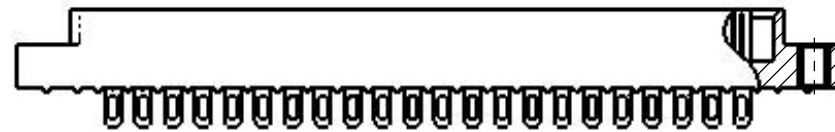
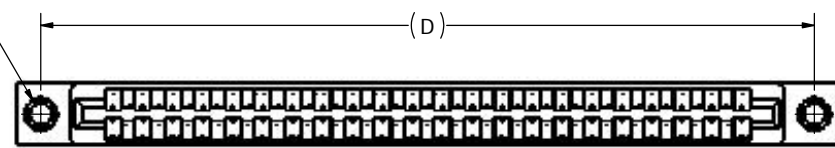
UNLESS OTHERWISE SPECIFIED: DIMENSIONS ARE IN INCHES[MM]		DATE	NAME	<b>SULLINS ELECTRONICS</b> DESCRIPTION: <b>EDGECARD, .156 CC, LP</b> PART NUMBER <b>_M_ DSE_-S243</b>
TOLERANCES: ANGULAR: ± 1° XX = ± .02 [508] .XXX = ± .005 [1270] .XXXX = ± .0005 [0127] PARENTHEICAL INFORMATION IS FOR REFERENCE ONLY		8/2/2006	HT	
THE INFORMATION HEREIN CONTAINS PROPRIETARY INFORMATION OF SULLINS ELECTRONICS AND IS NOT TO BE REPRODUCED, USED OR DISCLOSED TO OTHERS FOR ANY PURPOSE EXCEPT AS SPECIFICALLY AUTHORIZED IN WRITING BY AN OFFICER OF SULLINS ELECTRONICS.	INTERPRET DIMENSIONS AND GEOMETRIC TOLERANCING PER: ANSI Y14.5-1984	SIZE <b>C</b>	DWG. NO. <b>C10454</b>	REV <b>F</b>
SCALE: 2:1		SHEET 1 OF 3		

8 7 6 5 4 3 2 1



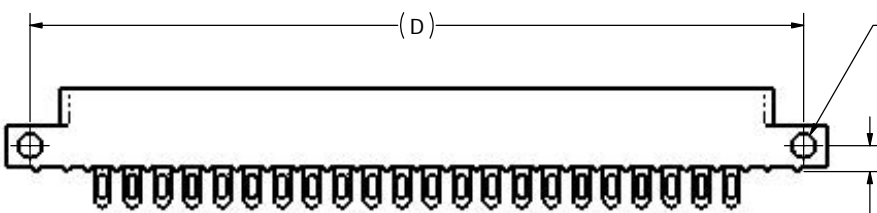
\_\_M\_\_DSEN-S243

2X #4-40  
THREADED  
INSERT

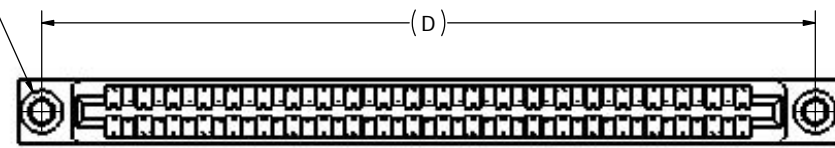


\_\_M\_\_DSEI-S243

2X FLOATING BOBBIN  
Ø.116[2.95] CLEARANCE  
FOR # 4 SCREW



\_\_M\_\_DSES-S243



\_\_M\_\_DSEF-S243

# CUSTOMER COPY



RoHS COMPLIANT

UNLESS OTHERWISE SPECIFIED:  
DIMENSIONS ARE IN INCHES[MM]  
TOLERANCES:  
ANGULAR: ± 1°  
XX = ± .02 [ .508]  
.XXX = ± .005 [ .127]  
.XXXX = ± .0005 [ .0127]  
PARENTHETICAL INFORMATION IS FOR  
REFERENCE ONLY  
INTERPRET DIMENSIONS AND GEOMETRIC  
TOLERANCING  
PER: ANSI Y14.5-1984

DRAWN	DATE	NAME	<b>SULLINS ELECTRONICS</b>	
HT	8/2/2006	HT		
THE INFORMATION HEREIN CONTAINS PROPRIETARY INFORMATION OF SULLINS ELECTRONICS AND IS NOT TO BE REPRODUCED, USED OR DISCLOSED TO OTHERS FOR ANY PURPOSE EXCEPT AS SPECIFICALLY AUTHORIZED IN WRITING BY AN OFFICER OF SULLINS ELECTRONICS.			DESCRIPTION: <b>EDGECARD, .156 CC, LP</b>	
PART NUMBER			PART NUMBER	
SIZE			REV	
<b>C</b>			<b>F</b>	
DWG. NO. <b>C10454</b>			SCALE: 2:1	
SHEET 2 OF 3			SHEET 2 OF 3	

PART NUMBER	NO. OF POS.	A ± .008[0.20]		B ± .008[0.20]		C ± .015[0.38]		D ± .010[0.25]		E ± .020[0.51]		E ± .020[0.51]		F ± .005[0.13]			
		IN	MM	IN	MM	IN	MM	IN	MM	IN	MM	IN	MM	IN	MM		
__ M02DSEN-S243	2	0.156	3.96	0.476	12.09	0.596	15.14	"N" MOUNTING								0.325	8.26
__ M03DSEN-S243	3	0.312	7.92	0.632	16.05	0.752	19.10										
__ M06DSE -S243	6	0.780	19.81	1.100	27.94	1.220	30.99	1.533	38.94	1.782	45.26	1.882	47.80				
__ M08DSE -S243	8	1.092	27.74	1.412	35.86	1.532	38.91	1.845	46.86	2.094	53.19	2.194	55.73				
__ M10DSE -S243	10	1.404	35.66	1.724	43.79	1.844	46.84	2.157	54.79	2.406	61.11	2.506	63.65				
__ M11DSE -S243	11	1.560	39.62	1.880	47.75	2.000	50.80	2.313	58.75	2.562	65.07	2.662	67.61				
__ M12DSE -S243	12	1.716	43.59	2.036	51.71	2.156	54.76	2.469	62.71	2.718	69.04	2.818	71.58				
__ M15DSE -S243	15	2.184	55.47	2.504	63.60	2.624	66.65	2.937	74.60	3.186	80.92	3.286	83.46				
__ M18DSE -S243	18	2.652	67.36	2.972	75.49	3.092	78.54	3.405	86.49	3.654	92.81	3.754	95.35				
__ M22DSE -S243	22	3.276	83.21	3.596	91.34	3.716	94.39	4.029	102.34	4.278	108.66	4.378	111.20				
__ M24DSE -S243	24	3.588	91.14	3.908	99.26	4.028	102.31	4.341	110.26	4.590	116.59	4.690	119.13				
__ M25DSE -S243	25	3.744	95.10	4.064	103.23	4.184	106.27	4.497	114.22	4.746	120.55	4.846	123.09				
__ M28DSE -S243	28	4.212	106.98	4.532	115.11	4.652	118.16	4.965	126.11	5.214	132.44	5.314	134.98				
__ M36DSE -S243	36	5.460	138.68	5.780	146.81	5.900	149.86	6.213	157.81	6.462	164.13	6.562	166.67				
__ M43DSE -S243	43	6.552	166.42	6.872	174.55	6.992	177.60	7.305	185.55	7.554	191.87	7.654	194.41				
__ M44DSE -S243	44	6.708	170.38	7.028	178.51	7.148	181.56	7.461	189.51	7.710	195.83	7.810	198.37				

Only applies for PPS/PEEK insulators with threaded inserts or floats

**PART NUMBER CODING**

\_\_ M \_\_ DSE \_\_ - S243

**MATERIAL (INSULATOR/CONTACT)**

- E = PBT/PHOSPHOR BRONZE**  
OPERATING TEMP: -65°C TO +125°C @ 3 AMPS PER CONTACT  
OPERATING TEMP: -65°C TO +21°C @ 5 AMPS PER CONTACT  
PROCESSING TEMP: 260°C FOR 10 SECS MAX
- R = PPS/PHOSPHOR BRONZE**  
OPERATING TEMP: -65°C TO +125°C  
PROCESSING TEMP: 260°C FOR 120 SECS MAX  
CURRENT RATING PER CONTACT: 5 AMPS
- G = PA9T/PHOSPHOR BRONZE**  
OPERATING TEMP: -65°C TO +125°C  
PROCESSING TEMP: 260°C FOR 120 SECS MAX  
CURRENT RATING PER CONTACT: 5 AMPS
- H = PBT/BERYLLIUM COPPER**  
OPERATING TEMP: -65°C TO +125°C @ 3 AMPS PER CONTACT  
OPERATING TEMP: -65°C TO +105°C @ 5 AMPS PER CONTACT  
PROCESSING TEMP: 260°C FOR 10 SECS MAX
- A = PPS/BERYLLIUM COPPER**  
OPERATING TEMP: -65°C TO +150°C  
PROCESSING TEMP: 260°C FOR 120 SECS MAX  
CURRENT RATING PER CONTACT: 5 AMPS
- J = PA9T/BERYLLIUM COPPER**  
OPERATING TEMP: -65°C TO +150°C  
PROCESSING TEMP: 260°C FOR 120 SECS MAX  
CURRENT RATING PER CONTACT: 5 AMPS
- F = PPS/SPINODAL (CONSULT FACTORY)**  
AVAILABLE IN OVERALL GOLD ONLY (S OR M PLATING CODE)  
OPERATING TEMP: -65°C TO +200°C  
PROCESSING TEMP: 260°C FOR 120 SECS MAX  
CURRENT RATING PER CONTACT: 3 AMPS
- C = PPS/BERYLLIUM COPPER (CONSULT FACTORY)**  
AVAILABLE IN OVERALL GOLD ONLY (S OR M PLATING CODE)  
OPERATING TEMP: -65°C TO +200°C @ 2 AMPS PER CONTACT  
OPERATING TEMP: -65°C TO +173°C @ 3 AMPS PER CONTACT  
PROCESSING TEMP: 260°C FOR 120 SECS MAX
- W = PEEK/BERYLLIUM COPPER (CONSULT FACTORY)**  
AVAILABLE IN OVERALL GOLD ONLY (S OR M PLATING CODE)  
OPERATING TEMP: -65°C TO +250°C  
CURRENT RATING PER CONTACT: 3 AMPS  
(CONSULT FACTORY FOR OTHER MATERIALS)

**MOUNTING STYLE**

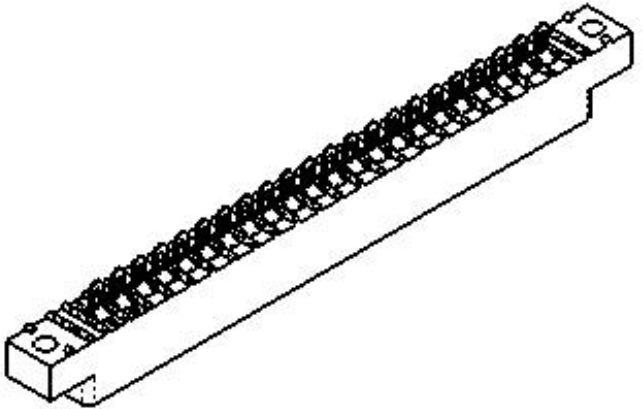
- H = .125" DIA. CLEARANCE HOLES (PAGE 1)
- P = .142" DIA. CLEARANCE HOLES (PAGE 1)
- N = NO MOUNTING EARS (PAGE 2)
- S = .125" DIA. SIDE MOUNTING (PAGE 2)
- I = #4-40 THREADED INSERT (PAGE 2)
- F = FLOATING BOBBIN (PAGE 2)

**NUMBER OF POSITIONS (CONTACTS PER ROW)**

**PLATING**

ALL PLATINGS ARE LEAD FREE AND HAVE .000050" NICKEL UNDERPLATE

- CONTACT SURFACE
- G = .000010" GOLD
- Y = .000030" GOLD
- B = .000010" GOLD
- C = .000030" GOLD
- \*E = .000100" PURE TIN, MATTE, OVERALL
- S = .000010" GOLD OVERALL
- M = .000030" GOLD
- \*\* OVERALL TIN ONLY AVAILABLE ON MATERIAL CODES E, R AND G
- TERMINATION
- .000005" GOLD
- .000005" GOLD
- .000100" PURE TIN, MATTE
- .000100" PURE TIN, MATTE
- .000100" GOLD OVERALL



**CUSTOMER COPY**



RoHS COMPLIANT

UNLESS OTHERWISE SPECIFIED:  
DIMENSIONS ARE IN INCHES[MM]  
TOLERANCES:  
ANGULAR: ± 1°  
XX = ± .02 [ .508]  
.XXX = ± .005 [ .127]  
XXXX = ± .0005 [ .0127]  
PARENTHEICAL INFORMATION IS FOR REFERENCE ONLY  
INTERPRET DIMENSIONS AND GEOMETRIC TOLERANCING PER: ANSI Y14.5-1984

DRAWN	DATE	NAME	<b>SULLINS ELECTRONICS</b>	
8/2/2006	HT		DESCRIPTION	
THE INFORMATION HEREIN CONTAINS PROPRIETARY INFORMATION OF SULLINS ELECTRONICS AND IS NOT TO BE REPRODUCED, USED OR DISCLOSED TO OTHERS FOR ANY PURPOSE EXCEPT AS SPECIFICALLY AUTHORIZED IN WRITING BY AN OFFICER OF SULLINS ELECTRONICS.			EDGECARD, .156 CC, LP	
PART NUMBER			PART NUMBER	
M DSE -S243			M DSE -S243	
SIZE	DWG. NO.	REV		
C	C10454	F		
SCALE: 2:1			SHEET 3 OF 3	