

CST-1020

Description:

Triad current sense transformers are used to detect the current passing through a conductor. These transformers are very reliable and operate efficiently at 50/60 Hz.

Electrical Specifications (@25C)

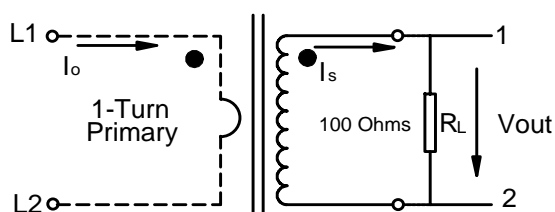
| IP Amps | Turns Ratio | Terminating Resistor | | DCR (Ω) Nominal | Volts/Amp@ rated IP for various loads (Ω) | | | | Net Weight Grams |
|------------|----------------|-------------------------|-------|--------------------------------|---|-------|-------|-------|------------------------|
| | | Ohms | Watts | | 100 | 500 | 2K | 5K | |
| 20 | 1000:1 | 100 | .04 | 40 | .0977 | .3943 | .6174 | .7662 | 20 |

Dimensions:

| A | B | C | D | E | F |
|-------|-------|-------|-------|------|------|
| 23.50 | 24.80 | 12.00 | 15.00 | 7.50 | 8.50 |

Units: In mm

Schematic:

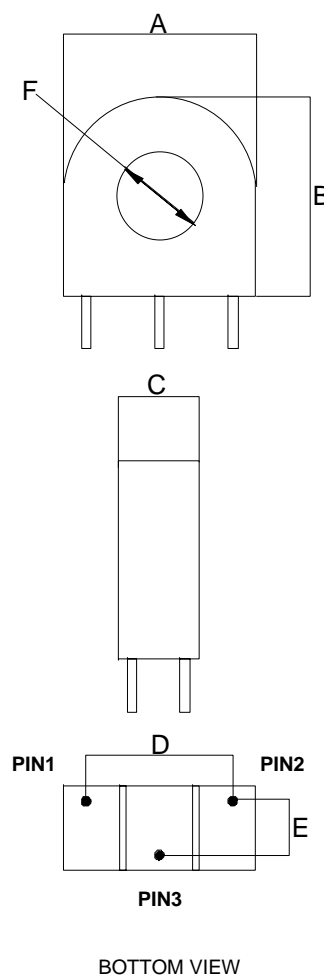


Technical Notes:

1. Pin3 for mechanical support only.
2. Pin diameter is 0.8 ± 0.1 mm.
3. Pin length is 5 ± 1 mm.

RoHS Compliance: As of manufacturing date February 2005, all standard products meet the requirements of 2011/65/EU, known as the RoHS initiative.

* Upon printing, this document is considered "uncontrolled". Please contact Triad Magnetics' website for the most current version.



BOTTOM VIEW