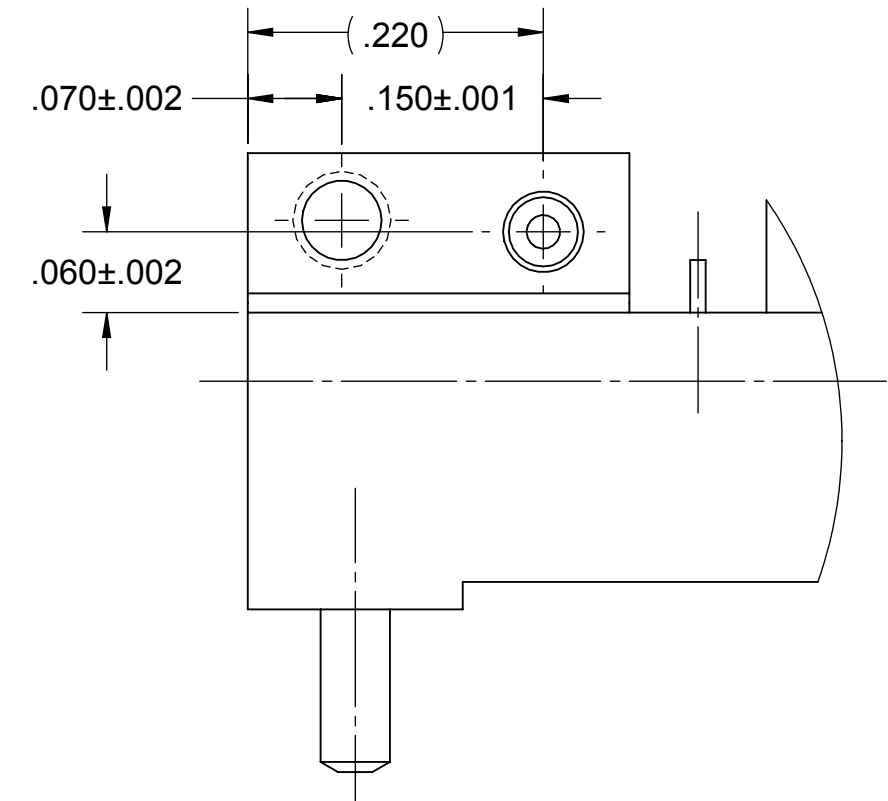
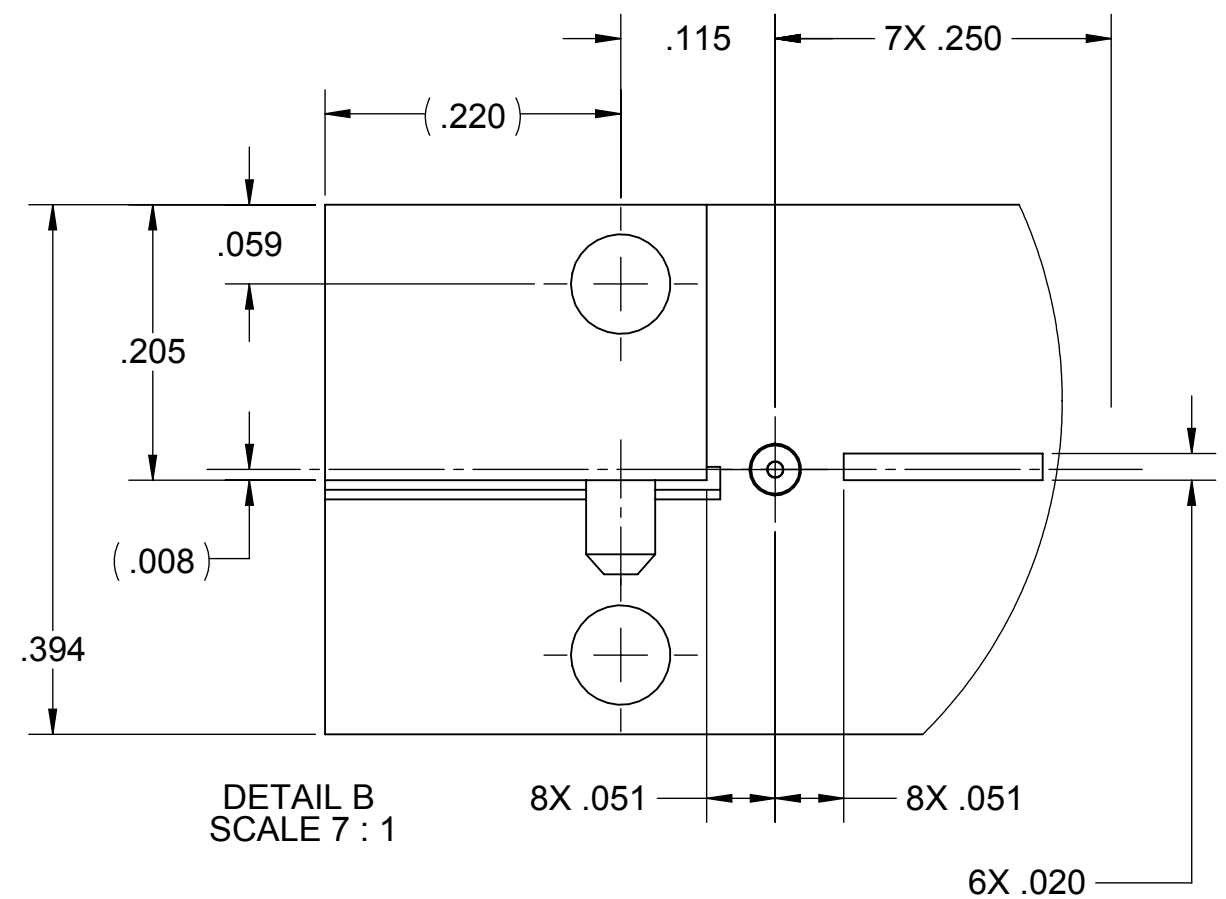
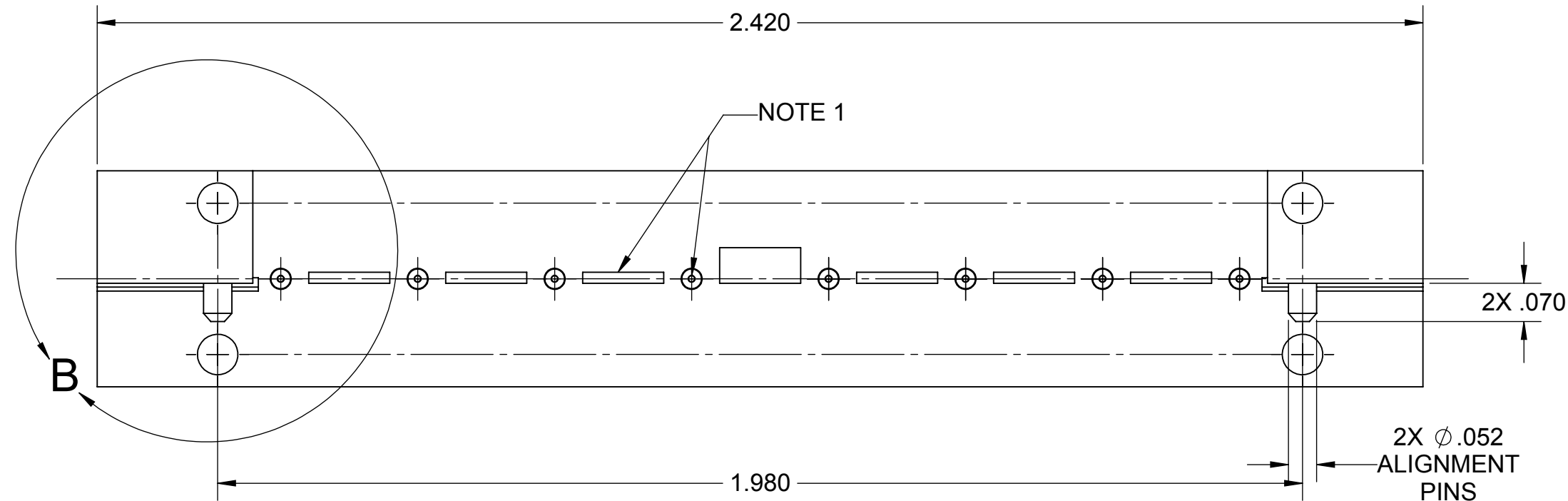
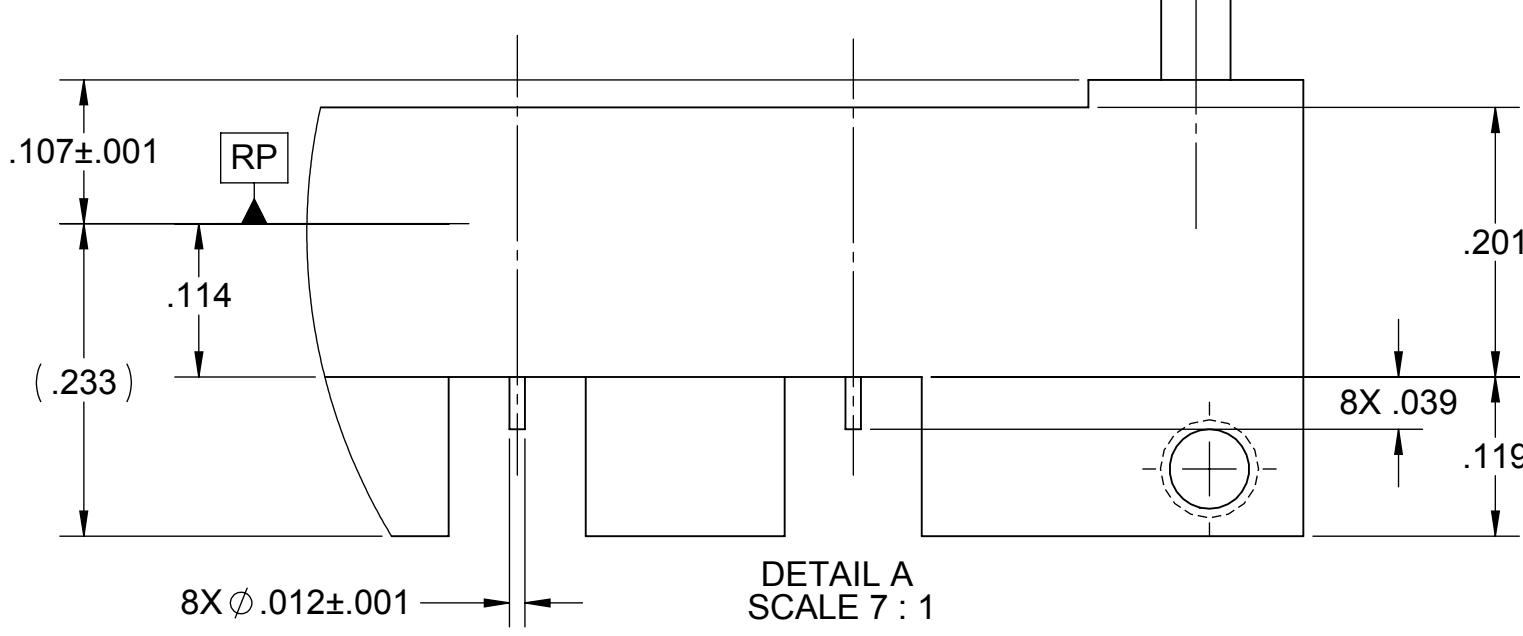
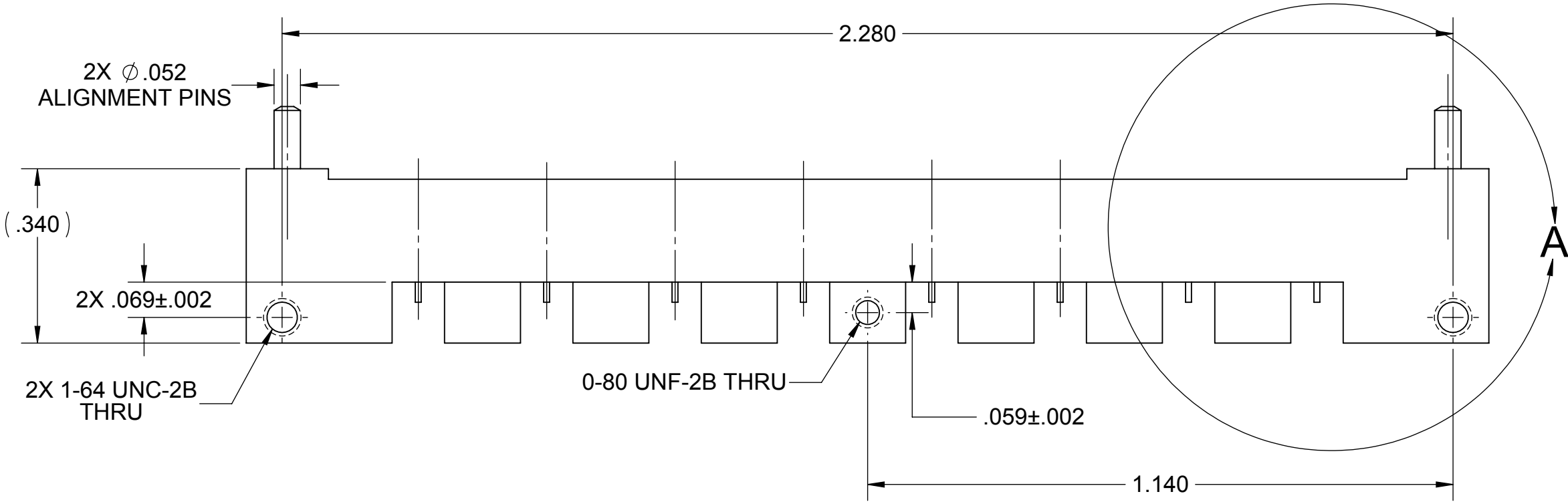


ROHS COMPLIANT

PRODUCT DATA DRAWING

REVISION HISTORY			
REV.	DESCRIPTION	DATE	APPROVED
-	DCN 42455	06/16	STW



MATERIAL:

BODY & SHROUDS: STAINLESS STEEL PER AMS-5640, ALLOY UNS S30300, TYPE 1; OR ASTM A582 TYPE 303, COND. A

CONTACTS: BERYLLIUM COPPER PER ASTM B196, ALLOY No. UNS C17300, TD04

INSULATORS: PTFE PER ASTM D1710, TYPE I, GRADE 1, CLASS B

FINISH:

BODY, SHROUDS, & CONTACTS: GOLD PER ASTM B488, TYPE II, CODE C, CLASS 0.76, OVER NICKEL PER AMS-QQ-N-290, CLASS 1, .00010" MIN.

PERFORMANCE:

IMPEDANCE: 50 OHMS

FREQ. RANGE: DC TO 65 GHz.

- NOTES:
- CENTER PINS, POSTS, AND PCB MOUNT AREA TO BE PRE-TINNED USING Sn96 SOLDER.
 - ALL DIMENISONS APPLY PRIOR TO PRE-TINNING.

MATERIAL:	SEE NOTES
FINISH:	SEE NOTES
DO NOT SCALE DRAWING	
PROPRIETARY	
THE INFORMATION CONTAINED IN THIS DRAWING IS THE SOLE PROPERTY OF SV MICROWAVE, INC. ANY REPRODUCTION IN PART OR AS A WHOLE WITHOUT THE WRITTEN PERMISSION OF SV MICROWAVE, INC. IS PROHIBITED.	

DIMENSIONS ARE IN INCHES	
TOLERANCES:	
ANGULAR:	±1°
ONE PLACE DECIMAL	±.030
TWO PLACE DECIMAL	±.010
THREE PLACE DECIMAL	±.005
INTERPRET DIMENSIONS AND TOLERANCES PER ASME Y14.5M - 1994	
THIRD ANGLE PROJECTION	

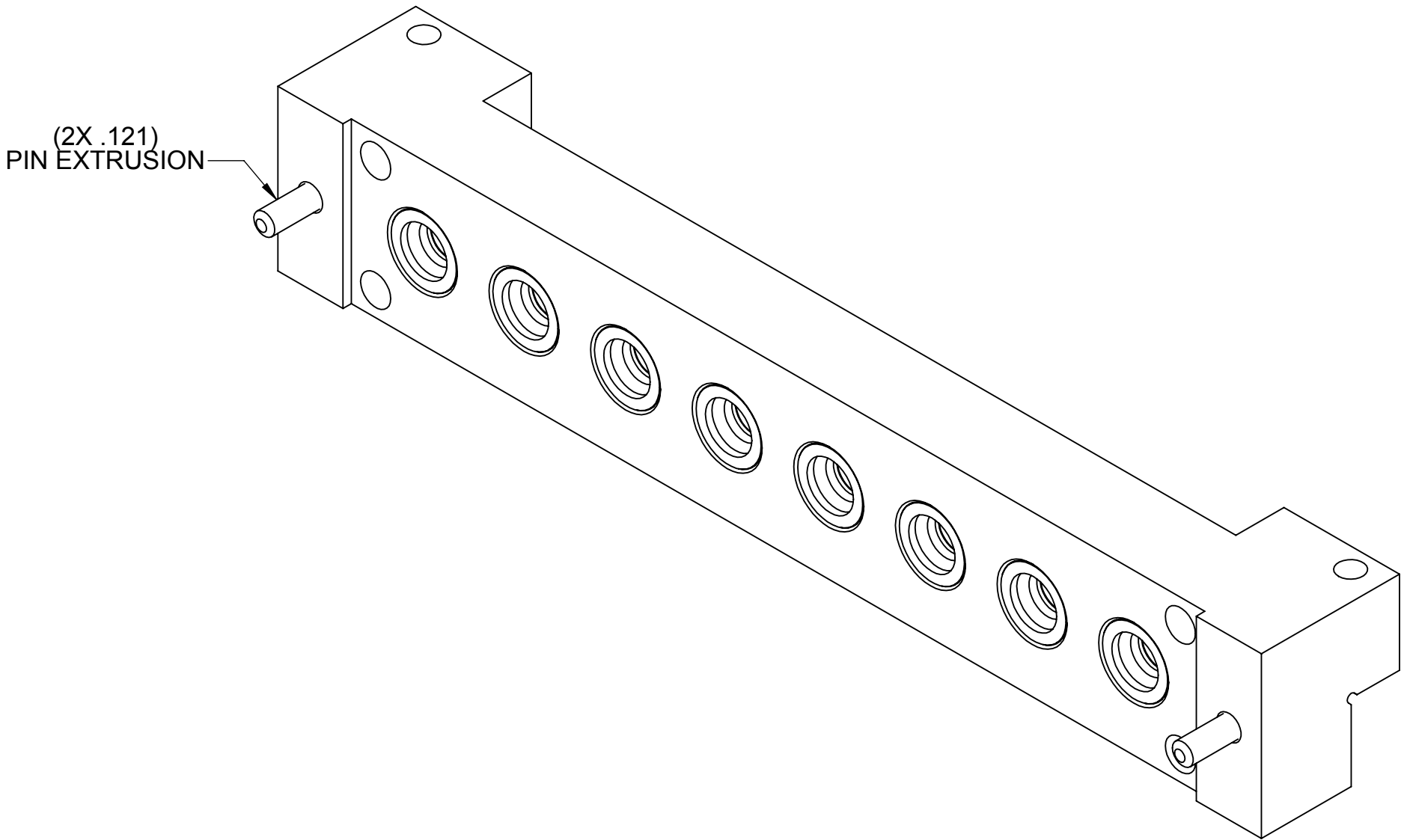
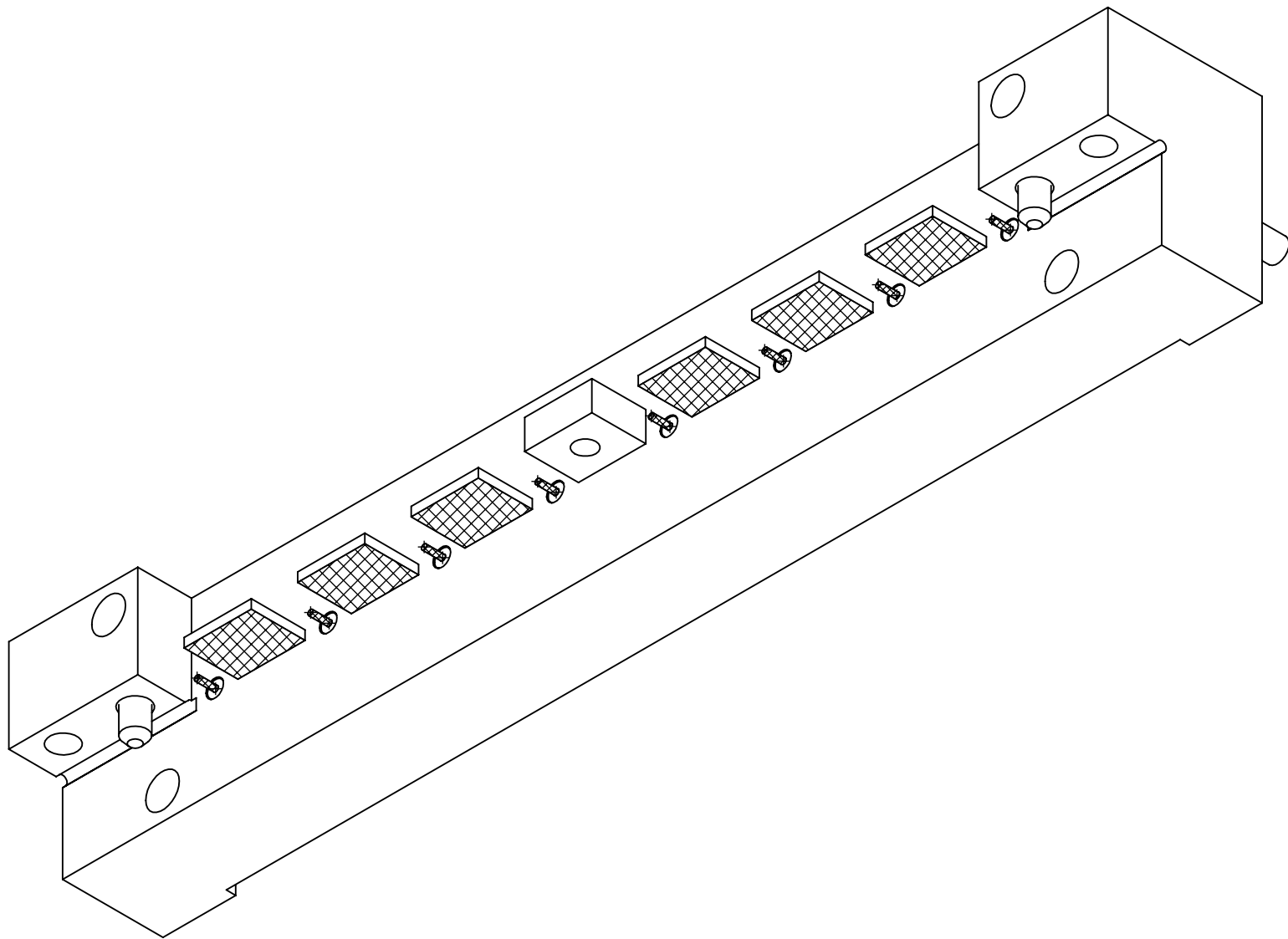
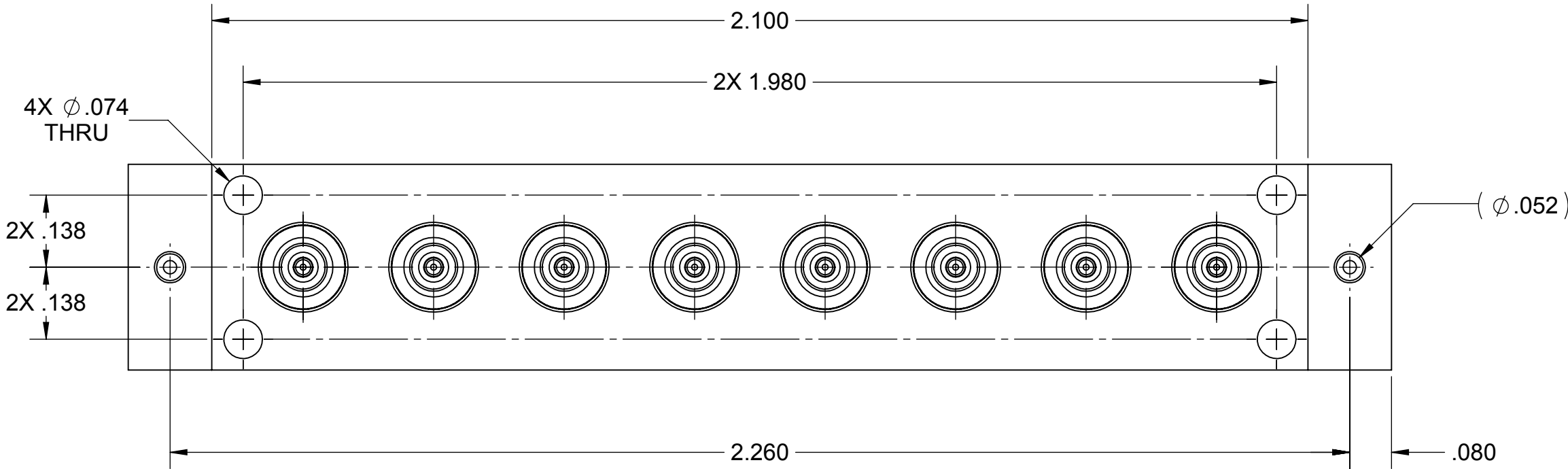
UNLESS OTHERWISE SPECIFIED:	
1. ALL DIMENSIONS ARE AFTER PLATING.	
2. BREAK CORNERS & EDGES R.005 MAX.	
3. CHAMFER 1ST AND LAST THREAD.	
4. SURFACE ROUGHNESS 63 PER MIL-STD-10.	
5. DIA'S ON COMMON CENTERS TO BE CONCENTRIC WITHIN .005 T.I.R.	
6. REMOVE ALL BURRS.	
DRAWN:	MAL 06/22/16
CHECKED:	STW 06/22/16
APPROVED:	STW 06/22/16
E.M. SIMULATION:	

SV Microwave, Inc.® 2400 Centrepark West Drive, Suite 100 West Palm Beach, FL 33409			
TITLE: SMPM FD MALE 8-PORT EDGE LAUNCH			
SIZE	CAGE CODE	DWG. NO.	
C	95077	3211-60181-TD	
SCALE: 4:1		SHEET 1 OF 2	

ROHS COMPLIANT

PRODUCT DATA DRAWING

REVISION HISTORY			
REV.	DESCRIPTION	DATE	APPROVED
	SEE SHEET 1		



MATERIAL:	SEE NOTES
FINISH:	SEE NOTES
DO NOT SCALE DRAWING	
PROPRIETARY	
THE INFORMATION CONTAINED IN THIS DRAWING IS THE SOLE PROPERTY OF SV MICROWAVE, INC. ANY REPRODUCTION IN PART OR AS A WHOLE WITHOUT THE WRITTEN PERMISSION OF SV MICROWAVE, INC. IS PROHIBITED.	

DIMENSIONS ARE IN INCHES	
TOLERANCES:	
ANGULAR:	±1°
ONE PLACE DECIMAL	±.030
TWO PLACE DECIMAL	±.010
THREE PLACE DECIMAL	±.005
INTERPRET DIMENSIONS AND TOLERANCES PER ASME Y14.5M - 1994	
THIRD ANGLE PROJECTION	

UNLESS OTHERWISE SPECIFIED:	
1. ALL DIMENSIONS ARE AFTER PLATING.	
2. BREAK CORNERS & EDGES R.005 MAX.	
3. CHAMFER 1ST AND LAST THREAD.	
4. SURFACE ROUGHNESS 63 PER MIL-STD-10.	
5. DIA'S ON COMMON CENTERS TO BE CONCENTRIC WITHIN .005 T.I.R.	
6. REMOVE ALL BURRS.	
DRAWN:	MAL 06/22/16
CHECKED:	STW 06/22/16
APPROVED:	STW 06/22/16
E.M. SIMULATION:	

SV Microwave, Inc.® 2400 Centrepark West Drive, Suite 100 West Palm Beach, FL 33409			
TITLE: SMPM FD MALE 8-PORT EDGE LAUNCH			
SIZE C	CAGE CODE 95077	DWG. NO. 3211-60181-TD	
SCALE: 4:1		SHEET 2 OF 2	