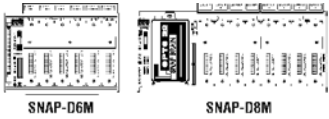


SNAP I/O Mounting Racks



SNAP racks come in two model types — D Series (digital only) and B Series (for SNAP brains). All SNAP racks use a single 5-volt power source, are configured for standard panel mounting, and offer a DIN-rail mounting option. B Series racks are designed for integration with the SNAP Ethernet, Profibus, and Modbus brains, and allow a combination of analog and digital SNAP I/O modules on the same rack. D Series racks use the same 50-pin connector as Opto 22 Classic racks and are therefore compatible with Opto 22 Classic digital brain boards and interfaces. D Series racks provide an ideal direct connect solution for OEM applications.

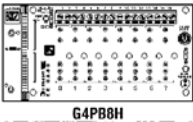
<b>“D” Series Digital Only Racks</b>	
691-0019. SNAP-D4M. 4-Module Rack .....	EACH 42.00
691-0020. SNAP-D4MC. 4-Module Rack With Extra Terminal Block For Field Wiring .....	EACH 45.00
691-0023. SNAP-D6MC. 6-Module Rack With Extra Terminal Block For Field Wiring .....	EACH 70.00
691-0025. SNAP-D8M. 8-Module Rack .....	EACH 81.00
691-0028. SNAP-D12M. 12-Module Rack .....	EACH 104.00

<b>“B” Series Brain Board Racks</b>	
691-2144. SNAP-B4M. 4-Module Rack, FM Approved .....	EACH 77.00
691-0031. SNAP-B8M. 8-Module Rack, FM Approved .....	EACH 94.00
691-0034. SNAP-B12M. 12-Module Rack, FM Approved .....	EACH 112.00
691-0037. SNAP-B16M. 16-Module Rack, FM Approved .....	EACH 161.00
691-0038. SNAP-B16MC. 16-Module Rack With Extra Terminal Block For Field Wiring .....	EACH 182.00
691-5536. SNAP-D64RS. 16-Module Rack for Use with SNAP-ENET-D64 Digital Brain .....	EACH 161.00

<b>SNAP I/O Mounting Rack Accessories</b>	
691-2140. SNAP-LCM4DIN. DIN-Rail Adapter for SNAP-LCM4 Industrial Controller .....	EACH 70.00
691-0044. SNAP-RACKDIN. SNAP Rack Din Rail Adapter Clip .....	EACH 11.25
691-2144. SNAP-B4M. SNAP B Series 4 Position Brain Rack .....	EACH 77.00

G4 Mounting Racks

G4 mounting racks accept G4 digital I/O modules only and are available in 4, 8, 16, 24, and 32-channel models. G4 digital input and output modules can be used in any combination on any G4 mounting rack. A model with screw terminals for both field and logic connections is available for custom application development, targeted at isolating non-isolated devices such as PLCs. G4 models are available for both direct connection and connection to Opto 22 Classic brain boards.



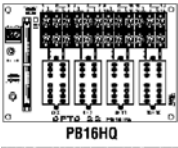
<b>G4 Racks (Brain Board Compatible)</b>	
<b>G4 Digital Racks with Header Connector (Brain Board Compatible)</b>	
691-0212. G4PB8H. 8-Channel Rack .....	EACH 42.00
691-0213. G4PB16H. 16-Channel Rack .....	EACH 69.00

<b>G4 Racks for Direct Connect</b>	
691-0216. G4PB4. 4-Channel I/O Module Rack .....	EACH 21.00
691-0217. G4PB4R. 4-Channel Output Module Rack .....	EACH 25.00
691-0218. G4PB8. 8-Channel I/O Module Rack .....	EACH 38.00
691-0219. G4PB16. 16-Channel I/O Module Rack .....	EACH 62.00
691-0220. G4PB16I. 16-Channel I/O Module Rack Isolated Control .....	EACH 80.00
691-0221. G4PB16T. 16-Channel I/O Module Rack Extra Term.Strip .....	EACH 80.00
691-0222. G4PB24. 24-Channel I/O Module Rack .....	EACH 97.00
691-0223. G4PB32DEC. 32-Channel I/O Module Rack .....	EACH 125.00

<b>G4 Rack Accessories</b>	
691-0224. G4STRAP. G4 16-Position Strap Single Rack, R5187 .....	EACH 8.95

Quad Pak I/O Racks

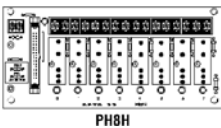
Quad racks provide a high-density digital I/O solution and accept Opto 22 Quad Pak modules. Both 50-pin header and card edge connectors are available.



<b>Quad Pak Digital Racks (Brain Board Compatible)</b>	
691-0238. PB16HQ. Quad 4-Module Position Rack .....	EACH 69.00
691-0239. PB32HQ*. Quad 8-Module Rack For B4 Brain .....	EACH 120.00

<b>Quad Pak Digital Racks for Direct Connect</b>	
691-0240. PB24HQ*. Quad 6-Module Position Rack .....	EACH 115.00
691-0241. PB24Q. Quad 6-Module Position Rack .....	EACH 108.00

<b>Quad Pak I/O Rack Accessories</b>	
691-0244. STRAP4Q. 4-Position Strap Quad Rack R0431 .....	EACH 1.65
*With Header Connector.	



Standard Mounting Racks

Standard mounting racks include both digital and analog. Standard digital racks are available in 4, 8, 16, and 24-channel models and feature LED status indicators and plug-in replaceable fuses for each channel. Standard digital input and output modules can be combined on any Standard mounting rack. A Standard digital rack, with screw terminals for both field and logic connections, is available for custom application development targeted at isolating non-Classic brain boards. Standard analog racks in 4, 8, or 16-channel models accept Opto 22 Standard analog I/O modules. Standard analog racks are compatible with all Classic analog brain boards.

<b>Standard Digital Racks</b>	
<b>Standard Digital Racks with Header Connector (Brain Board Compatible)</b>	
691-0190. PB4H. 4-Channel Rack .....	EACH 42.00
691-0191. PB8H. 8-Channel Rack .....	EACH 56.00
691-0192. PB16H. 16-Channel Rack .....	EACH 69.00
691-0193. PB16HC. 16-Channel Rack Common TB .....	EACH 98.00

<b>Standard Digital Racks for Direct Connect</b>	
691-0194. PB4. 4-Channel I/O Module Rack .....	EACH 21.00
691-0195. PB4R. 4-Channel Output Module Rack .....	EACH 35.00
691-0196. PB8. 8-Channel I/O Module Rack .....	EACH 38.00
691-0197. PB16A. 16-Channel I/O Module Rack .....	EACH 62.00
691-0198. PB16C. 16-Channel I/O Module Rack Extra Term. Strip .....	EACH 95.00
691-0199. PB16T. 16-Channel I/O Module Rack .....	EACH 80.00
691-0200. PB24. 24-Channel I/O Module Rack .....	EACH 97.00

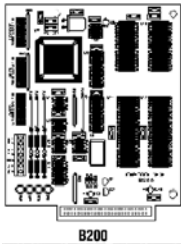
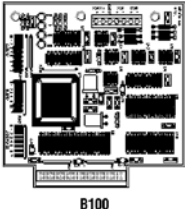
<b>Standard Analog Racks</b>	
691-0203. PB16AH. 16-Channel Analog Mounting Rack .....	EACH 170.00

<b>Standard I/O Rack Accessories</b>	
691-0207. PB5A. Power Supply 120 VAC .....	EACH 70.00
691-0210. STRAP2. 2 Position Strap Single Rack R0433 .....	EACH 1.00
691-0211. STRAP8. 8 Position Strap Single Rack R0430 .....	EACH 1.55

Cables

691-0356. HH1. 5. 1.5-Ft Header to Header Cable .....	EACH 40.00
691-0358. HH4. 4-Ft Header to Header Cable .....	EACH 47.00
691-0359. HH6. 6-Ft Header to Header Cable .....	EACH 54.00
691-0360. HH8. 8-Ft Header to Header Cable .....	EACH 60.00

Brain Boards



Opto 22's brain board technology creates a truly distributed and scalable, intelligent I/O system. Opto 22 brain boards have two distinguishing factors: the form factor of the racks that they support and the protocol(s) that they utilize.

Classic Brain Boards

Classic brain boards are distinguished by the protocol that they support. Mystic protocol brain boards include the B100 (digital) and B200 (analog). The Optomux protocol is supported by the B1 and B100 (digital) and B2 and B200 (analog) brain boards. Pamux brain boards include B4 (32-channel digital), B5 (16-channel digital), and B6 (16-channel analog). The Mystic protocol provides seamless integration with Opto 22's FactoryFloor software.

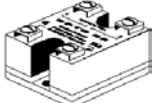
<b>Mistic Brain Boards</b>	
691-0276. B100. 16-Ch. Digital Brain Mystic/Optomux Protocol .....	EACH 240.00
691-0277. B200. 16-Ch. Analog Brain Mystic/Optomux Protocol .....	EACH 250.00

<b>Optomux Brain Boards</b>	
691-0278. B1. 16-Channel Digital Brain Optomux Protocol .....	EACH 221.00
691-0279. B2. 16-Channel Analog Brain Optomux Protocol .....	EACH 225.00

<b>Pamux Brain Boards</b>	
691-0280. B4. 32-Channel Digital Brain Pamux .....	EACH 158.00
691-0281. B5. 16-Channel Digital Brain Pamux .....	EACH 151.00
691-0282. B6. 16-Channel Analog Brain Pamux .....	EACH 310.00

Power Series Relays

Opto 22 provides a full range of Power Series relays with a wide variety of voltage and current options. All Power Series SSRs provide 4000 VRMS of optical isolation and provide a wide operating temperature range of -40°C to +100°C. Part numbers with an A are TTL compatible, with a 3-32 VDC control voltage. Part numbers with an A use an 85-280 VAC control voltage.



DC Switching Series

The DC Series delivers isolated DC control to large OEM customers worldwide. DC Power Series SSRs switch DC voltages between 5-60 volts. They have nominal current ratings of 3 and 5 amps.

691-0501. DC60S3. 60 VDC, 3 Amp, DC Control .....	EACH 9.60
691-0502. DC60S5. 60 VDC, 5 Amp, DC Control .....	EACH 15.00

AC Switching Series

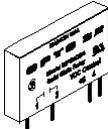
The AC Series offers the ultimate in solid-state reliability. AC Power Series SSRs switch voltages between 120 and 575 VAC with nominal current ratings from 3 to 45 amps. All AC Power Series SSRs feature a built-in snubber and a maximum zero voltage turn-on time of 1/2 cycle. All models are UL recognized and CSA certified. Relays with a -17 extension on the part number are VDE approved, while a -12 indicates a transient proof model.

691-0503. 120A10. 120 VAC, 10 A, AC Control .....	EACH 19.00
691-0504. 120A25. 120 VAC, 25 A, AC Control .....	EACH 21.00
691-0505. 120D10. 120 VAC, 10 A, DC Control .....	EACH 16.00
691-0506. 120D25. 120 VAC, 25 A, DC Control .....	EACH 20.00
691-0507. 120D3. 120 VAC, 3 A, DC Control .....	EACH 12.50
691-0508. 120D45. 120 VAC, 45 A, DC Control .....	EACH 30.00
691-0509. 240A10. 240 VAC, 10 A, AC Control .....	EACH 18.50
691-0510. 240A25. 240 VAC, 25 A, AC Control .....	EACH 26.00
691-0511. 240A45. 240 VAC, 45 A, AC Control .....	EACH 34.00
691-0512. 240D10. 240 VAC, 10 A, DC Control .....	EACH 19.00
691-0514. 240D25. 240 VAC, 25 A, DC Control .....	EACH 22.00
691-0515. 240D25-17. 240 VAC, 25 A, DC Control, VDE Approved .....	EACH 24.00
691-0516. 240D3. 240 VAC, 3 A, DC Control .....	EACH 13.00
691-0517. 240D45. 240 VAC, 45 A, DC Control .....	EACH 31.00
691-0518. 240D45-17. 240 VAC, 45 A, DC Control, VDE Approved .....	EACH 33.00
691-0520. 380D45. 380 VAC, 45 A, DC Control .....	EACH 52.00
691-0521. 480D10-12. 480 VAC, 10 A, DC Control, Trans. Proof .....	EACH 28.00
691-0526. 575D45-12. 575 VAC, 45 A, DC Control, Trans. Proof .....	EACH 33.00

<b>Power Series Accessories</b>	
691-0527. SAFETY COVER. Standard Model SSR Cover .....	EACH 1.46

Printed Circuit Series

Opto 22's Printed Circuit Series allows OEMs to easily deploy solid-state relays on printed circuit boards with switch loads up to 4 amps.

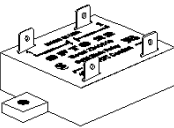


MP Series

The MP Series packaging is designed with a minimum footprint to allow maximum relay density on the circuit board. Z Series SSRs switch nominal voltages of either 120 or 240 VAC with nominal current ratings of 2 and 4 amps. All MP Series SSRs provide 4000 VRMS of optical isolation and provide a wide operating temperature range of -40°C to +100°C. MP Series SSRs are TTL compatible, with a 3-32 VDC control voltage. All MP Series SSRs feature a built-in snubber and a maximum zero voltage turn-on time of 1/2 cycle. All models are UL recognized and CSA certified. Relays with a -17 extension on the part number are VDE approved.

<b>MP Series DC Switching</b>	
691-0531. DC200MP. 200 VDC, 1 A, DC Control .....	EACH 11.25
691-0532. DC60MP. 60 VDC, 3 A, DC Control .....	EACH 8.00

<b>MP Series AC Switching</b>	
691-0533. MP120D2. 120 VAC, 2 A, DC Control .....	EACH 8.50
691-0534. MP120D4. 120 VAC, 4 A, DC Control .....	EACH 8.75
691-0535. MP240D2. 240 VAC, 2 A, DC Control .....	EACH 9.15
691-0536. MP240D4. 240 VAC, 4 A, DC Control .....	EACH 9.75
691-0537. MP240D4-17. 240 VAC, 4 A, DC Control, VDE Approved .....	EACH 10.50



Z Series Relays

An economical 10 amp SSR in an all plastic package is made possible through a unique heat transfer system. All Z Series SSRs provide 4000 VRMS of optical isolation and provide a wide operating temperature range of -40°C to +100°C. Z Series SSRs are TTL compatible, with a 3-32 VDC control voltage. All Z Series SSRs feature a built-in snubber and a maximum zero voltage turn-on time of 1/2 cycle. All models are UL recognized and CSA certified. Relays with a -17 extension on the part number are VDE approved.

691-0528. Z120D10. 120 VAC, 10 A, DC Control .....	EACH 9.80
691-0529. Z240D10. 240 VAC, 10 A, DC Control .....	EACH 10.00