

Accessories Multimode Relay MT

- Snap-on mounting on DIN-rail
- Screw mounting
- Pozidrive screws with rising clamp terminals
- Logical layout of input/output connections
- White marking area
- Din-rail sockets and accessories: RoHS compliant (Directive 2002/95/EC)

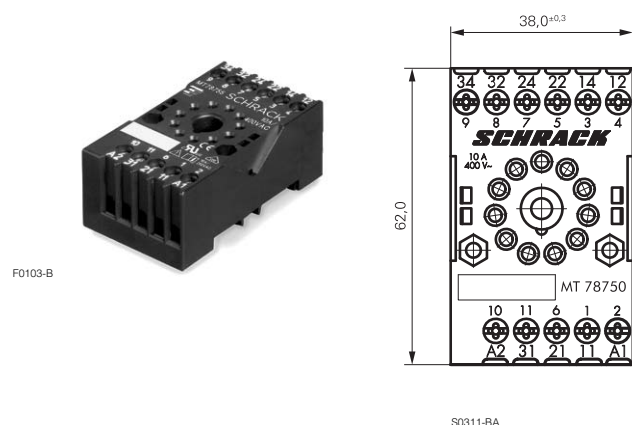


F0235-B

MT DIN-rail sockets with screw-type terminals

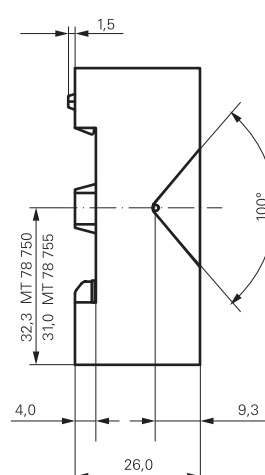
MT 78 750 MT3 DIN-rail socket with screw-type terminals, 11-pin

MT 78 755 MT2 DIN rail socket with screw type terminals, 8-pin

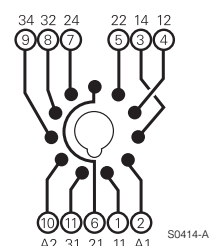


F0103-B

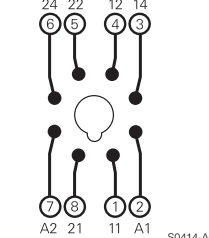
S0311-BA



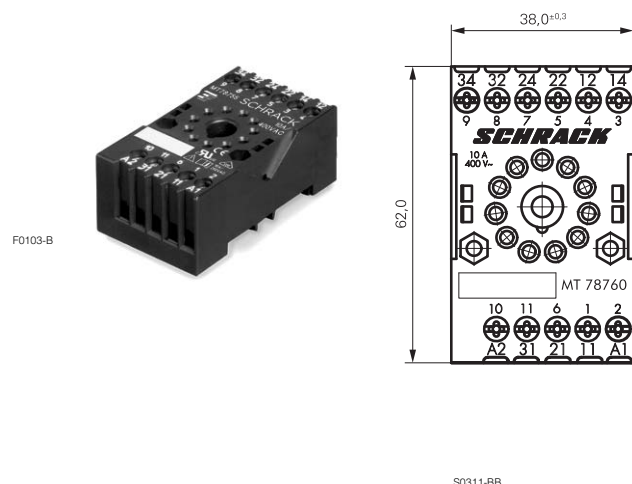
MT 78 750



MT 78 755

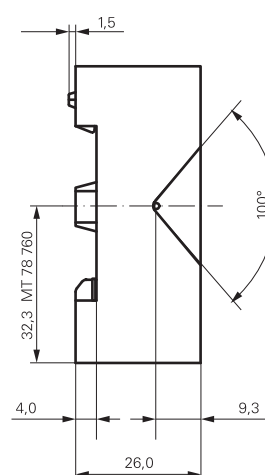


MT 78 760 MT3 DIN-rail socket with screw-type terminals, 11-pin

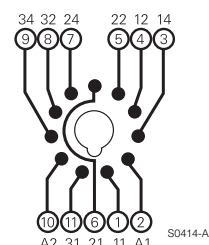


F0103-B

S0311-BB



MT 78 760

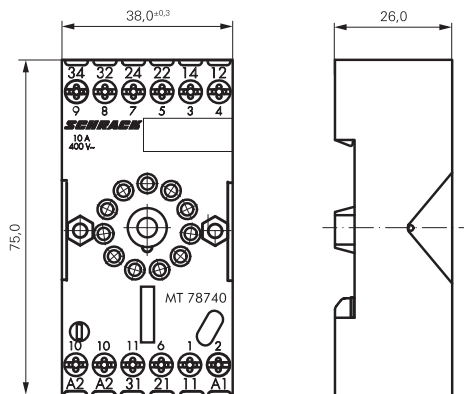


Accessories Multimode Relay MT (Continued)

MT 78 740 MT3 DIN-rail socket with screw-type terminals, 11-pin
MT 78 745 MT2 DIN rail socket with screw type terminals, 8-pin



F0200-B



Socket system MT 78 740 and MT 78 745

- 8/11 pin socket for MT2 / MT3
- Double A2 screw for simple further connection of coil supply

S0366-A

Approvals

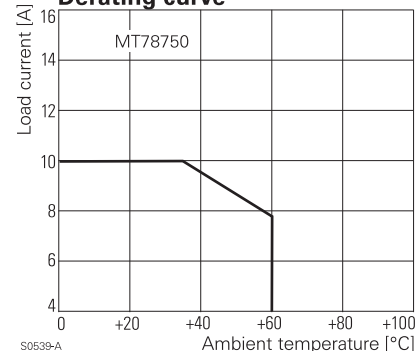
VDE REG.-Nr. 6182, cULus E135149

Technical data

MT 78 750/755/760/740/745

Rated voltage / max. switching voltage AC	240 / 400 VAC
Rated current	10 A
Dielectric strength coil-contact circuit	2500 V _{rms}
open contact circuit	1500 V _{rms}
adjacent contact circuits	2500 V _{rms}
Clearance / creepage coil-contact circuit	≥ 2.8/4 mm
Material group of insulation parts	IIIa
Insulation to IEC 60664-1	
Type of insulation coil-contact circuit	basic
open contact circuit	functional
adjacent contact circuits	basic
Rated insulation voltage	250 V
Pollution degree	2
Rated voltage system	230 / 400 V
Overvoltage category	III
RoHS - Directive 2002/95/EC	
DIN-rail sockets and retainers:	compliant
Ambient temperature range	-20...+80°C
Terminals	screw
Terminal screw torque acc. IEC 61984	0.5 Nm
max.	0.7 Nm
Wire cross section	
single wire	2 x 2.5 mm ²
fine wire	2 x 2.5 mm ²
with bootlace crimp (DIN 46228/1)	2 x 1.5 mm ²
Insertion cycles	A (10)
Max. Insertion Force total	100 N
Mounting distance	≥ 0, dense packing
Weight MT 78 750/760	54 g
MT 78 755	47 g
MT 78 740	62 g
MT 78 745	56 g
Packaging unit	25 pcs

Derating curve



S0539-A

DIN-rail sockets with screw-type terminals

Type	Part Number
MT 78 750 DIN-rail socket with screw-type terminals 11-pin	1415035-1
MT 78 755 DIN-rail socket with screw-type terminals 8-pin	3-1415035-1
MT 78 760 DIN-rail socket with screw-type terminals 11-pin	8-1415034-1
MT78 740 DIN-rail socket with screw-type terminals, 11-pin	8-1393163-3
MT78 745 DIN-rail socket with screw-type terminals, 8-pin	8-1393163-4

Accessories Multimode Relay MT (Continued)

Accessories for MT 78 750, MT 78 755, MT 78 760, MT 78 740, MT 78 745

Type	Part Number
MT 28 800 Metal retaining clip MT	8-1393163-0

LED and Protection modules for MT 78 740, MT 78 745

Type	Part Number
MTM T0 0A0 Protection diode 1N4007 (A1+, A2-)	7-1393163-6
MTM U0 730 RC-network 110...230 VAC	7-1393163-8

LED

MTM L0 024 red LED 24 VAC / VDC	7-1393163-4
--	-------------

Function modules for MT 78 740, MT 78 745

Type	Part Number
MTM Z0 W00 Delay ON	7-1393163-9
MTM F0 W00 Multifunction	7-1393163-3

Technical data - Function modules

Nominal voltage	24...240 VDC / VAC
Mains frequency	48...63 Hz
Precision of time setting	+ 0,5 %
Readiness for repetition	≤ 0,5 % or 5 ms
Influence of temperature	≤ 0,1 %/°C
Time range switchable	0,05s...240h in 8 ranges
RoHS - Directive 2002/95/EC	compliant as per product date code 0515
Ambient temperature	-25...+55 °C

Function modules for MT 78 740, MT 78 745

Function	
Delay ON	
Delay OFF	
single shot leading edge	
single shot trailing edge	
Delay ON triggerd by signal contact	
single shot	
flasher starting with pause	
flasher starting with pulse	



F0201-B



F0203-B

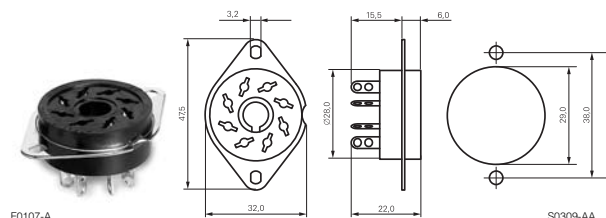


F0204-B

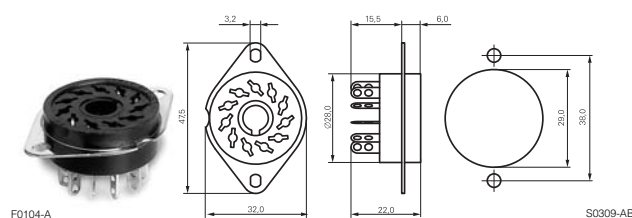
Accessories Multimode Relay MT (Continued)

MT sockets for PCB and with solder terminals MT 78 602/603/612/613

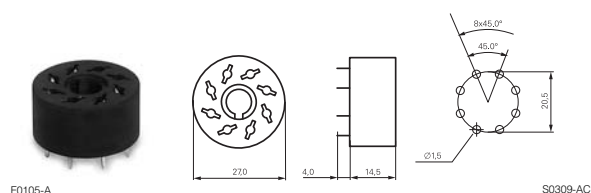
MT 78 612 Socket 8-pin with solder terminals



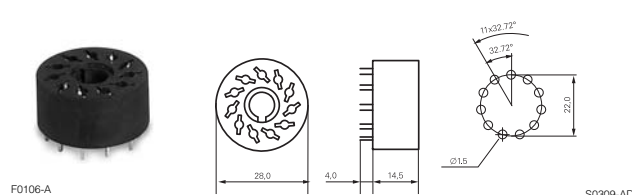
MT 78 613 Socket 11-pin with solder terminals



MT 78 602 Socket 8-pin with PCB terminals



MT 78 603 Socket 11-pin with PCB terminals



Technical data		MT 78 602/603/612/613
Rated voltage / max. switching voltage AC		240 / 400 VAC
Rated current		10 A
Dielectric strength coil-contact circuit		2500 V _{rms}
open contact circuit		1500 V _{rms}
adjacent contact circuits		2500 V _{rms}
Clearance / creepage coil-contact circuit		≥ 2.8/4 mm
Material group of insulation parts		IIIa
Insulation to IEC 60664-1		
Type of insulation coil-contact circuit		basic
open contact circuit		functional
adjacent contact circuits		basic
Rated insulation voltage		250
Pollution degree		2
Rated voltage system		230 / 400
Overvoltage category		III
RoHS - Directive 2002/95/EC		
MT 78 602, MT 78 603		compliant as per product date code 0517
MT 78 612, MT 78 613		compliant as per product date code 0543
Ambient temperature range		-40...+70°C
Terminals		pcb, solder terminals
Insertion cycles		A (10)
Max. Insertion Force total		100 N
Mounting distance		≥ 0, dense packing
Resistance to soldering heat		270°C / 10 s
Weight		7 g
Packaging unit		25 pcs

Sockets with solder and PCB terminals

Type	Part Number
MT 78 612 Socket 8-pin with solder terminals	7-1415043-1
MT 78 613 Socket 11-pin with solder terminals	8-1415043-1
MT 78 602 Socket 8-pin with PCB terminals	9-1415043-1
MT 78 603 Socket 11-pin with PCB terminals	1415044-1

Mouser Electronics

Authorized Distributor

Click to View Pricing, Inventory, Delivery & Lifecycle Information:

[TE Connectivity:](#)

[MT78603](#) [MT78750](#)