

4

3

2

1

THIS DRAWING IS UNPUBLISHED.

RELEASED FOR PUBLICATION

© COPYRIGHT

ALL RIGHTS RESERVED.

LOC

DIST


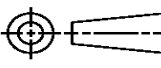
REVISIONS

P	LTR	DESCRIPTION	DATE	DWN	APVD
	C1	ECR-13-017205	6NOV13	RS	LZ




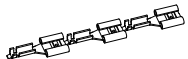
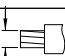

REPLACED BY OCEAN STYLE APPLICATOR PART  
NUMBER 2150191-1

FOR REPLACEMENT PARTS FOR APPLICATOR 1339535  
REFER TO ADDITIONAL PAGE(S). SPARE PARTS KIT (IF LISTED)  
WILL REMAIN AVAILABLE.

THE REPLACEMENT OCEAN STYLE APPLICATOR HAS THE  
SAME TERMINATOR/PRESS INTERFACE AS APPLICATOR  
1339535

THIS DRAWING IS A CONTROLLED DOCUMENT.		DWN R.SHEN		 TE Connectivity			
DIMENSIONS:		CHK LJ.ZHANG					
		APVD U.GUO		NAME END FEED HD-I APPLICATOR			
		PRODUCT SPEC					
		APPLICATION SPEC					
MATERIAL		WEIGHT		SIZE A3	CAGE CODE	DRAWING NO C- 1339535	RESTRICTED TO
FINISH		CUSTOMER ACCESSIBLE PRODUCTION DRAWING		SCALE		SHEET 1 OF 2	REV C1

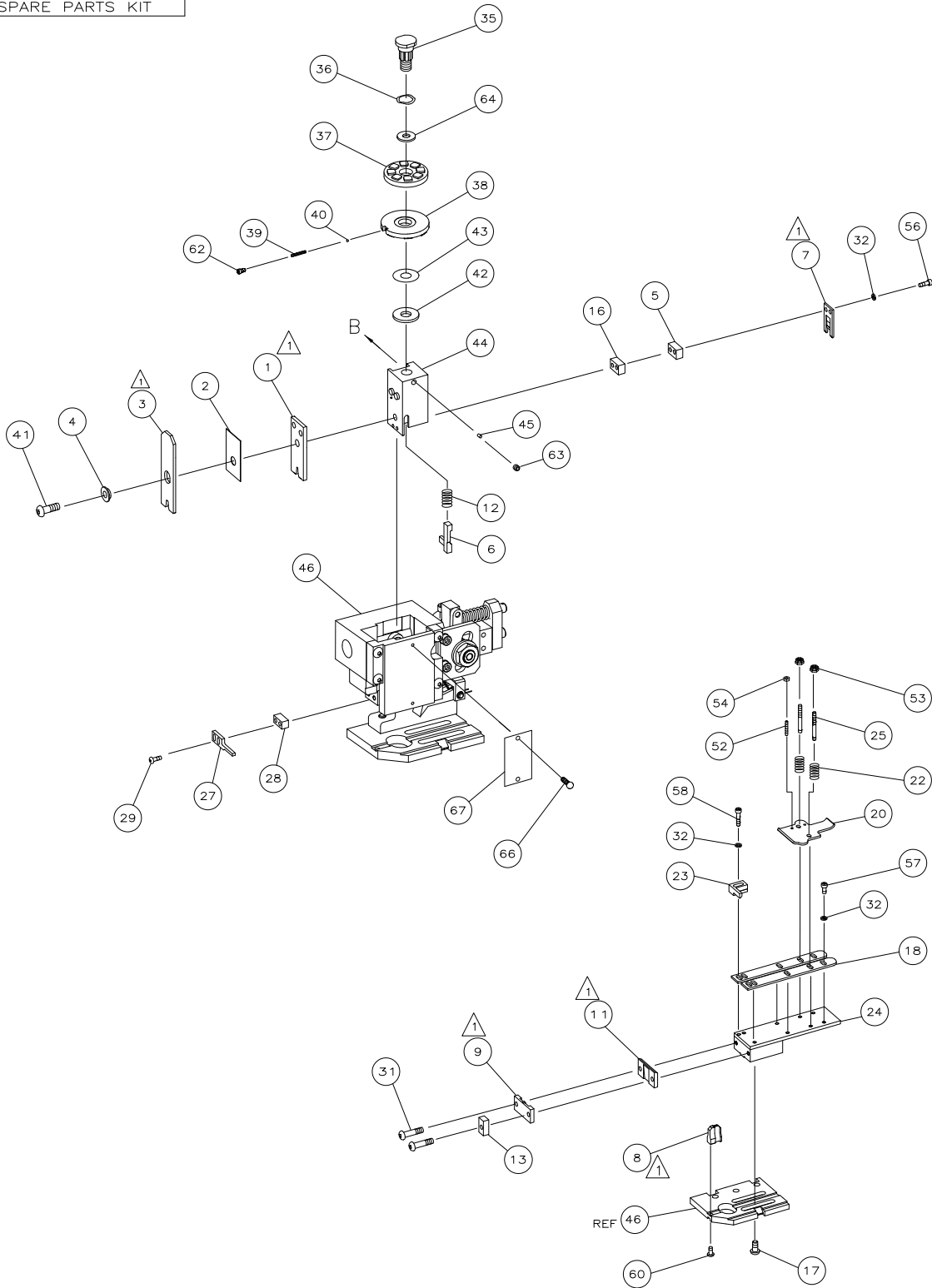
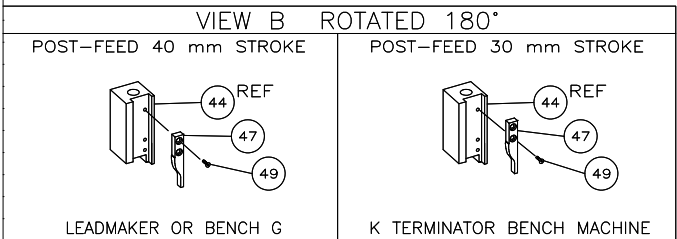
PART NUMBER	REV	FIRST USED	TERMINATOR	FEED TYPE	DESCRIPTION
1339535-1	C		BENCH & LEADMAKER	MECH POST FEED	HD-I APPLICATOR
7-1339535-1	C		BENCH & LEADMAKER	MECH POST FEED	-1 AND SPARE PARTS
7-1339535-7	A		-	-	SPARE PARTS KIT

CRIMP DATA AMP TERMINAL AMP CRIMP SPECS				
TERMINAL NAME: .250 SERIES FASTIN-ON RECEPT.				
CRIMP	SIZE	TYPE	RANGE	
WIRE	2.79 [.110 IN]	F	>1.0MM <sup>2</sup> - 2.5MM <sup>2</sup>	
INSUL	3.56 [.140 IN]	OV	2.10-3.10 [.083-.122 IN]	
WIRE STRIP LENGTH			APPL INSTRUCTION	
5.80-6.60 [.228-.260 IN]			408-8323	
TERMINAL		-		FEED
APPL SPEC		114-3118 		-
TERMINALS APPLIED				
				
160927	-	-	-	-
-	-	-	-	-
-	-	-	-	-
-	-	-	-	-
-	-	-	-	-
-	-	-	-	-
-	-	-	-	-
-	-	-	-	-
-	-	-	-	-
WIRE SIZE		CRIMP HEIGHT		PIN PN & LENGTH [IN]
mm <sup>2</sup> AWG				
2.50MM <sup>2</sup>		1.77 ±0.05 [.070 ±.002 IN]	9-354778-3 [.2960]	
2.00MM <sup>2</sup> OR 14AWG		1.64 ±0.05 [.065 ±.002 IN]	354779-6 [.3020]	
1.50MM <sup>2</sup>		1.51 ±0.05 [.059 ±.002 IN]	2-354779-0 [.3090]	
1.00MM <sup>2</sup>		1.42 ±0.05 [.056 ±.002 IN]	2-354779-4 [.3110]	
-		-	-	
-		-	-	
-		-	-	
-		-	-	
-		-	-	
-		-	-	
-		-	-	
-		-	-	
-		-	-	
-		-	-	
-		-	-	
-		-	-	
-		-	-	
-		-	-	
-		-	-	
-		-	-	
-		-	-	
-		-	-	
-		-	-	
-		-	-	
-		-	-	
-		-	-	
-		-	-	
-		-	-	
-		-	-	
-		-	-	
-		-	-	
-		-	-	
-		-	-	
-		-	-	
-		-	-	
-		-	-	
-		-	-	
-		-	-	
-		-	-	
-		-	-	
-		-	-	
-		-	-	
-		-	-	
-		-	-	
-		-	-	
-		-	-	
-		-	-	
-		-	-	
-		-	-	
-		-	-	
-		-	-	
-		-	-	
-		-	-	
-		-	-	
-		-	-	
-		-	-	
-		-	-	
-		-	-	
-		-	-	
-		-	-	
-		-	-	
-		-	-	
-		-	-	
-		-	-	
-		-	-	
-		-	-	
-		-	-	
-		-	-	
-		-	-	
-		-	-	
-		-	-	
-		-	-	
-		-	-	
-		-	-	
-		-	-	
-		-	-	
-		-	-	
-		-	-	
-		-	-	
-		-	-	
-		-	-	
-		-	-	
-		-	-	
-		-	-	
-		-	-	
-		-	-	
-		-	-	
-		-	-	
-		-	-	
-		-	-	
-		-	-	
-		-	-	
-		-	-	
-		-	-	
-		-	-	
-		-	-	
-		-	-	
-		-	-	
-		-	-	
-		-	-	
-		-	-	
-		-	-	
-		-	-	
-		-	-	
-		-	-	
-		-	-	
-		-	-	
-		-	-	
-		-	-	
-		-	-	
-		-	-	
-		-	-	
-		-	-	
-		-	-	
-		-	-	
-		-	-	
-		-	-	
-		-	-	
-		-	-	
-		-	-	
-		-	-	
-		-	-	
-		-	-	
-		-	-	
-		-	-	
-		-	-	
-		-	-	
-		-	-	
-		-	-	
-		-	-	
-		-	-	
-		-	-	
-		-	-	
-		-	-	
-		-	-	
-		-	-	
-		-	-	
-		-	-	
-		-	-	
-		-	-	
-		-	-	
-		-	-	
-		-	-	
-		-	-	
-		-	-	
-		-	-	
-		-	-	
-		-	-	
-		-	-	
-		-	-	
-		-	-	
-		-	-	
-		-	-	
-		-	-	
-		-	-	
-		-	-	
-		-	-	
-		-	-	
-		-	-	
-		-	-	
-		-	-	
-		-	-	
-		-	-	
-		-	-	
-		-	-	
-		-	-	
-		-	-	
-				

- △ RECOMMENDED SPARE PARTS.
- GREASE RAM, CAM, CAM FOLLOWER AND FEED ROD LIGHTLY.
  - LUBRICATE DAILY PER THE APPLICATOR INSTRUCTION SHEET SUPPLIED WITH THE APPLICATOR.

△ REQUIRED TENSILE VALUES ARE:-

2.50mm <sup>2</sup>	=	235 N
2.00mm <sup>2</sup> / 14AWG	=	200 N
1.50mm <sup>2</sup>	=	155 N
1.00mm <sup>2</sup>	=	115 N



					73
-	1	1	1339535	PRINT, APPLICATOR LOG SHEET	72
-	1	1	1338705-2	DOCUMENTATION PACKAGE	71
					70
					69
					68
-	1	1	461264-1	PLATE, IDENTIFICATION	67
-	2	2	21017-2	SCR,DRIVE(#2X.19)ID PLATE	66
					65
-	1	1	986950-1	WASHER, FLAT PRECISION	64
-	1	1	3-18031-0	SCR,SKT SET(M6X6)RAM	63
-	1	1	18023-9	SCR,SKT CAP(M4X6)CP DSC	62
					61
-	1	1	18024-7	SCR,BHC(M4X10)ANVIL	60
					59
-	2	2	1-18023-3	SCR,SHC(M4X16)HOLD DOWN	58
-	5	5	1-18023-0	SCR,SHC(M4X8)STRIP GUIDE	57
-	2	2	1-18023-2	SCR,SHC(M4X12)SLUG BLADE	56
					55
-	2	2	18029-1	NUT,HEX(M3)DRAG	54
-	2	2	986965-1	NUT,HEX SL(M4)DRAG STUD	53
-	2	2	2-18032-2	SCR,SKT SET(M3X10)DRAG	52
					51
					50
-	1	1	18024-3	SCR,BHC(M3X10)CAM	49
					48
-	1	1	1338676-1	CAM, POST-FEED 30 & 40 mm ST	47
-	1	1	1338662-1	APPLICATOR, BASIC (SUBASSY)	46
-	1	1	690191-1	PLUG, NYLON	45
-	1	1	1320998-1	RAM	44
-	1	1	690125-1	WASHER, LAMINATED	43
-	1	1	690124-1	WASHER, RAM	42
-	1	1	2-18024-6	SCREW,BHC(M8X25)CRIMPER	41
-	1	1	23241-1	BALL, STEEL	40
-	1	1	2-22278-7	SPRING, COMPRESSION	39
-	1	1	1320922-1	DISC, INSULATION	38
-	1	1	354777-1	WIRE DISC, PLASTIC	37
-	1	1	22480-5	WASHER, SPRING	36
-	1	1	690212-1	POST, RAM	35
					34
					33
-	9	9	18025-2	WASHER,LOCK(M4)SHEAR BL	32
-	2	2	1-18024-0	SCR,BHC(M4X20)SHEAR PL	31
					30
-	2	2	18024-8	SCR,BHC(M4X12)STRIPPER	29
-	1	1	3-690451-2	SPACER, STRIPPER	28
-	1	1	690455-7	STRIPPER	27
					26
-	2	2	1320906-1	DRAG, STUD	25
-	1	1	1320995-3	STRIP GUIDE	24
-	1	1	240825-2	PLATE, STRIP HOLD DOWN	23
-	2	2	4-22281-1	SPRING, DRAG	22
					21
-	1	1	1338665-1	DRAG, STOCK	20
					19
-	2	2	1338663-5	GUIDE, LOWER STRIP	18
-	4	4	1-18024-8	SCR,BHC(M6X12)STRIP GD PL	17
-	1	1	1338708-1	SPACER, SLUG BLADE	16
					15
					14
-	1	1	690481-2	SPACER, HOLD DOWN	13
-	1	1	23846-1	SPRING, HOLD DOWN	12
-	1	1	240833-2	PLATE, REAR SHEAR	11
					10
-	1	1	690482-3	PLATE, FRONT SHEAR	9
1	2	1	1333219-6	ANVIL	8
-	1	1	690474-3	BLADE, SLUG	7
-	1	1	2-455892-7	HOLD DOWN, TERMINAL	6
-	1	1	240641-8	SPACER, SLUG BLADE	5
-	1	1	238009-1	SPACER, BLOCK CRIMPER	4
1	2	1	854830-5	CRIMPER, INSULATION	3
-	1	1	455888-7	SPACER, CRIMPER	2
1	2	1	5-730251-9	CRIMPER, WIRE	1
-77	-71	-1	PART NO	DESCRIPTION	ITEM NO

THIS DRAWING IS A CONTROLLED DOCUMENT.		OBJANO1	OBJANO1	Tyco Electronics Corporation	
DIMENSIONS:		CHK	CHK	Harrisburg, PA 17105-3608	
INCHES		APVD	APVD	END FEED HD-I APPLICATOR	
TOLERANCES UNLESS OTHERWISE SPECIFIED:		F.BACKHURST		-	
0 PLC ± .005		PRODUCT SPEC		-	
1 PLC ± .002		APPLICATION SPEC		-	
2 PLC ± .001		SIZE		A1 00779	
3 PLC ± .0005		WEIGHT		C=1339535	
4 PLC ± .0002		CUSTOMER DRAWING		SCALE	
MATERIAL		FINISH		SHEET 1 OF 1	
-		-		REV C	