

LOC	DIST	REVISIONS			
		P	LTR	DESCRIPTION	DATE
E	B		D2	REVISED PER ECO-14-015544	16OCT2014
					RZ
					MY

- NOTES:
- 1

SINGLE PACK IN ACCORDANCE WITH AMP SPEC 107-3275
- 2

100 TRAY PACK IN ACCORDANCE WITH AMP SPEC 107-3275
- 3

Au PLATING OVER Ni PLATING OVER Cu PLATING
4.

CHARACTERISTICS

FREQUENCY RANGE: DC-6GHz

NOMINAL IMPEDANCE: 50 OHMS

WORKING VOLTAGE: 170V RMS

INSULATION RESISTANCE: 1000 MOHMS

DIELECTRIC WITHSTAND VOLTAGE: 500V RMS

CONTACT RESISTANCE: 5.0 mOHMS

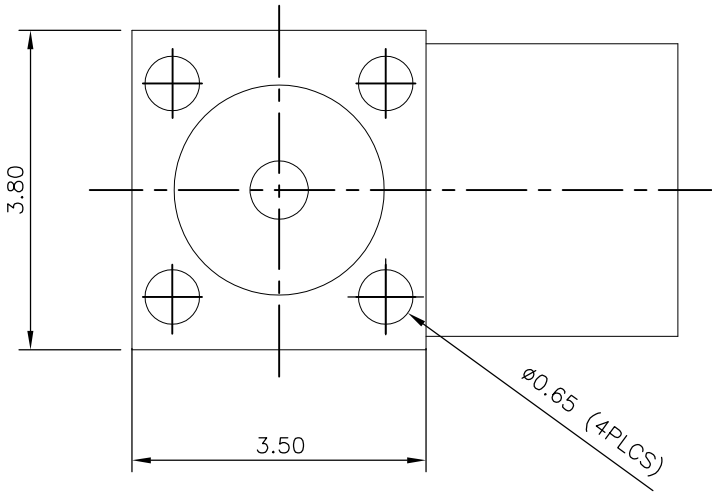
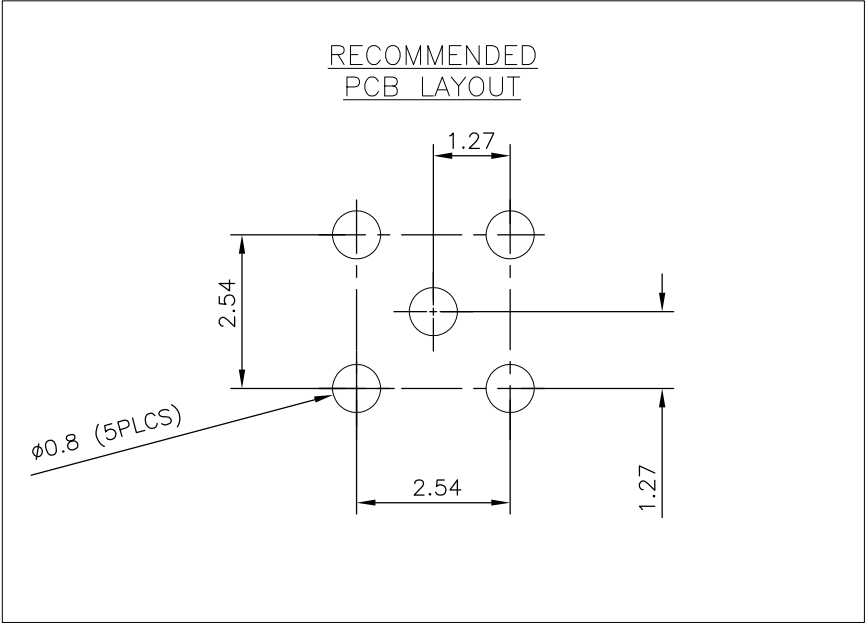
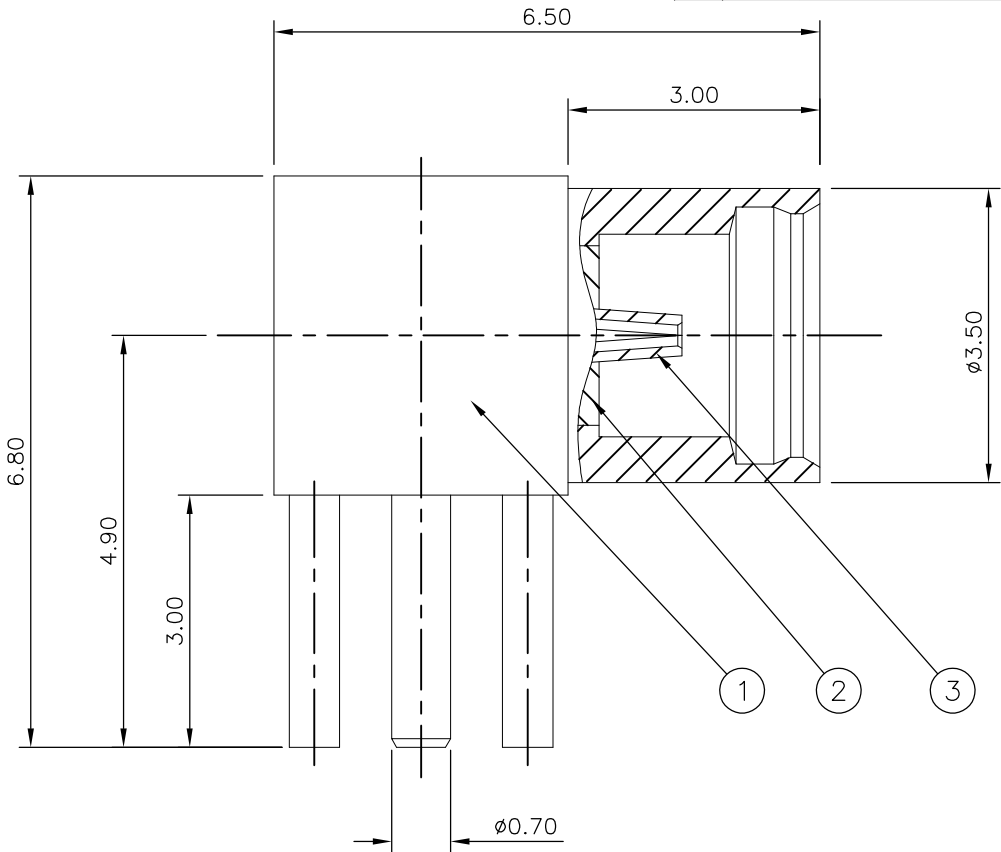
CENTRE CONTACT
5.

MECHANICAL CHARACTERISTICS

DURABILITY: 500 CYCLES
6.

FOR TECHNICAL DATA REFER TO YOUR LOCAL TE CONNECTIVITY SALES OFFICE
7.

ALL DIMENSIONS ARE NOMINAL FOR REFERENCE ONLY UNLESS OTHERWISE STATED



		1	1	BERYLLIUM COPPER 4	SOCKET	3
		1	1	PTFE	INSULATOR	2
		1	1	BRASS 4	BODY	1
		6--0	1--0	MATERIAL	DESCRIPTION	ITEM
		2	1			
QUANTITY PER ASSY			PARTS LIST			

THIS DRAWING IS A CONTROLLED DOCUMENT.

DIMENSIONS:

mm

0 PLC ± -

1 PLC ± -

2 PLC ± -

3 PLC ± -

4 PLC ± -

ANGLES ± -

FINISH

MATERIAL

SEE TABLE

SEE TABLE

DWN J.SANDWELL 12NOV03

CHK S.PARLOW 12NOV03

APVD F.WHEELER-KING 12NOV03

PRODUCT SPEC 108-3462

APPLICATION SPEC 411-3280

WEIGHT -

CUSTOMER DRAWING

TE Connectivity

NAME

MMCX RIGHT ANGLE PCB MOUNT SOCKET RECEPTACLE 50 OHMS

SIZE

CAGE CODE

DRAWING NO

RESTRICTED TO

A300779

C-1634010

SCALE NTS

SHEET 1 OF 1

REV D2