



Switches > Tactile Switches



Actuator Style: **Plunger**

Operating Function: **Off (On)**

Contact Base Material: **Copper Alloy**

Switch Contact Plating Material: **Silver**

Low Profile: **Yes**

Features

Product Type Features

Leg Style	Gull Wing
Actuator Style	Plunger

Configuration Features

Switch Feedback Type	Non-Tactile
ESD Grounding Terminal	Without
Ganged	Without
Operating Function	Off (On)
Configuration (Pole-Throw)	Single Pole - Single Throw
Number of Actuators	Single

Electrical Characteristics

Operating Voltage	12 VDC
-------------------	--------

Body Features

Actuator Material	Thermoplastic
Actuator Force	100 g[3.52 oz]



Product Orientation	Right Angle
Actuator Color	Black

Contact Features

Contact Base Material	Copper Alloy
Switch Contact Plating Material	Silver
Contact Current Rating	100 mA

Termination Features

Termination Method to PCB	Surface Mount
---------------------------	---------------

Housing Features

Low Profile	Yes
Process Sealed	No

Usage Conditions

Operating Temperature Range	-10 – 60 °C[14 – 140 °F]
-----------------------------	--------------------------

Product Compliance

For compliance documentation, visit the product page on TE.com>

EU RoHS Directive 2011/65/EU	Compliant
EU ELV Directive 2000/53/EC	Compliant
China RoHS 2 Directive MIIT Order No 32, 2016	No Restricted Materials Above Threshold
EU REACH Regulation (EC) No. 1907/2006	Current ECHA Candidate List: JUNE 2025 (250) Candidate List Declared Against: JUNE 2025 (250) Does not contain REACH SVHC
Halogen Content	Low Bromine/Chlorine - Br and Cl < 900 ppm per homogenous material. Also BFR /CFR/PVC Free
Solder Process Capability	Not reviewed for solder process capability


Product Compliance Disclaimer

This information is provided based on reasonable inquiry of our suppliers and represents our current actual knowledge based on the information they provided. This information is subject to change. The part numbers that TE has identified as EU RoHS compliant have a maximum concentration of 0.1% by weight in homogenous materials for lead, hexavalent chromium, mercury, PBB, PBDE, DBP, BBP, DEHP, DIBP, and 0.01% for cadmium, or qualify for an exemption to these limits as defined in the Annexes of Directive 2011/65/EU (RoHS2). Finished electrical and electronic equipment products will be CE marked as required by Directive 2011/65/EU. Components may not be CE marked. Additionally, the part numbers that TE has identified as EU ELV compliant have a maximum concentration of 0.1% by weight in homogenous materials for lead, hexavalent chromium, and mercury, and 0.01% for cadmium, or qualify for an exemption to these limits as defined in the Annexes of Directive 2000/53/EC (ELV). Regarding the REACH Regulation, the information TE provides on SVHC in articles for this part number is based on the latest European Chemicals Agency (ECHA) 'Guidance on




requirements for substances in articles’ posted at this URL: <https://echa.europa.eu/guidance-documents/guidance-on-reach>


Compatible Parts



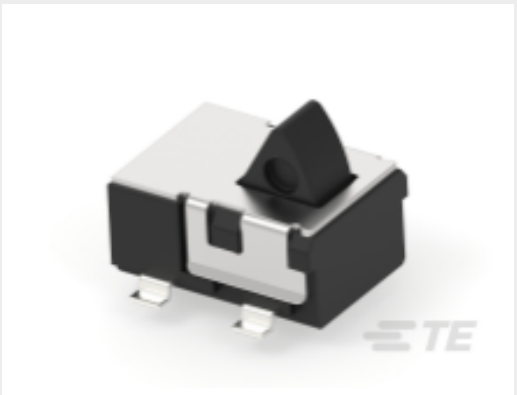
TE Part # 2331370-1
DET SW4.7X3.8X2.3 GW VERT. NO AG RL




TE Part # 2331398-1
DET SW6.5X3.9X6.0 GW VERT. NO AG TB



TE Part # 2331365-1
DET SW4.7X3.8X2.3 GW VERT. NO AG RL




TE Part # 2331394-1
DET SW4.7X3.5X2.25 GW VERT. NOH AG RL



TE Part # 2331393-1
DET SW5.7X4.0X2.0 GW HORZ. NO AG RL

Also in the Series | ALCOSWITCH JJ



Tactile Switches(52)

Customers Also Bought



TE Part #DT04-3P-E004
REC, 3P, BLK, N



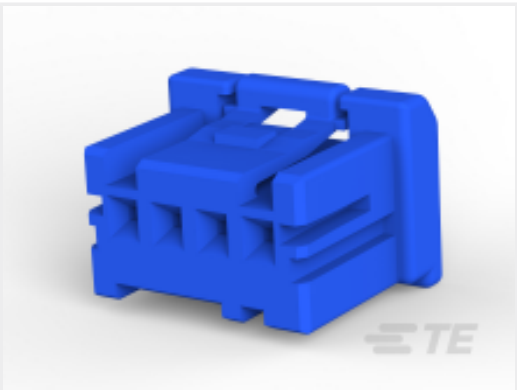
TE Part #CAT-C73765-M1E
M12 Field Installable Unshielded



TE Part #CAT-C73765-M1G
M12 Panel Mount Solder Cups



TE Part #34166
TERMINAL,PG SPD 16-14 8



TE Part #2-1903390-3
GIC 2.5 W PLUG HSG 4P BLUE



TE Part #2331350-1
DET SW6.3X3.0X8.0 GW VERT. NO AG TB



TE Part #CAT-M8793-CH8172
MQS, CONNECTOR HOUSING

Documents

Product Drawings

DET SW5.7X4.0X2.0 JB HORZ. NOH AG RL

English

CAD Files

3D PDF

3D

Customer View Model

ENG_CVM_CVM_2331402-1_A.2d_dxf.zip

English

Customer View Model

ENG_CVM_CVM_2331402-1_A.3d_igs.zip

English

Customer View Model

ENG_CVM_CVM_2331402-1_A.3d_stp.zip

English

By downloading the CAD file I accept and agree to the [Terms and Conditions](#) of use.

Datasheets & Catalog Pages

JJ Series Detector Switches Data Sheet

English