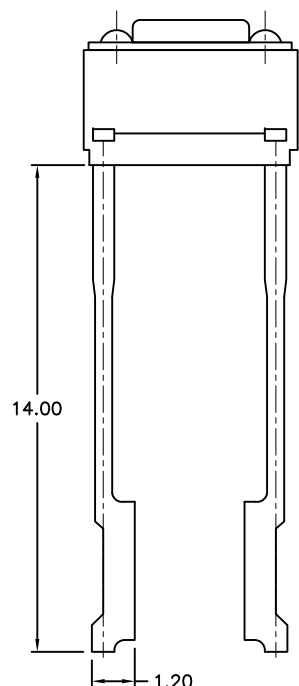
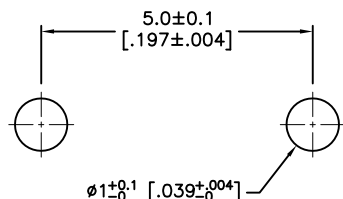


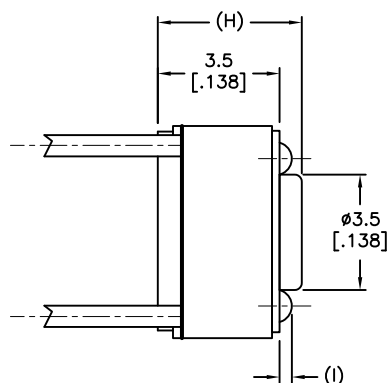
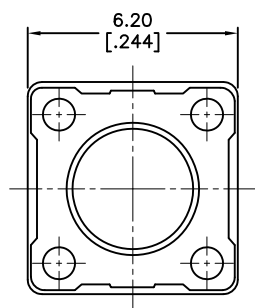
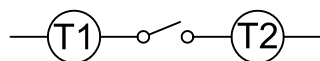
DCP #	REV	DESCRIPTION	DRAWN	DATE	CHECKD	DATE	APPRVD	DATE
2032	A	Released	JN	07/07/09	JWM	07/07/09	JWM	07/07/09



P.C.B. Layout



Circuit Diagram



SPECIFICATION

MECHANICAL

- Operation Force: See Table
- Stop Strength: Max.3kgf vertical static load continuously for 15 seconds
- Stroke: (6x6) 0.25+0.2mm / -0.1
- Operation Temperature: -25°C to + 70°C
- Storage Temperature: -30°C to +80°C

ELECTRICAL

- Electrical Life: 1,000,000 cycles min.
- Rating: 50mA , 12VDC
- Contact Resistance: 100mΩmax.
- Insulation Resistance: 100MΩmin. at 500VDC
- Dielectric Strength: 250VAC / 1 minute
- Contact Arrangement: 1 pole 1 throw

MATERIALS

- COVER: Steel
- BASE: UL94V-0 Nylon High-temp Thermoplastic
Color: Black
- STEM: UL94V-0 Nylon High-temp Thermoplastic
Color: Black (100gf), Brown (160gf)
- CONTACT DISC: Phosphor bronze with silver cladding.
- TERMINAL: Brass with silver plated.

Mfg. P/N	Dim. H	Dim. I	Operating Force	Color of Stem
MC32879	4.3mm	0.5 [.0197]	100gf	Black
MC32880	5.0mm	0.6 [.0236]		
MC32881			160gf	Brown

DISCLAIMER:
ALL STATEMENTS AND TECHNICAL INFORMATION CONTAINED HEREIN ARE BASED UPON INFORMATION AND/OR TESTS WE BELIEVE TO BE ACCURATE AND RELIABLE. SINCE CONDITIONS OF USE ARE BEYOND OUR CONTROL, THE USER SHALL DETERMINE THE SUITABILITY OF THE PRODUCT FOR THE INTENDED USE AND ASSUME ALL RISK AND LIABILITY WHATSOEVER IN CONNECTION THEREWITH.

TOLERANCES:

UNLESS OTHERWISE SPECIFIED, DIMENSIONS ARE FOR REFERENCE PURPOSES ONLY.

DRAWN BY:

Jason Nash

CHECKED BY:

Jeff McVicker

APPROVED BY:

Jeff McVicker

DATE:

07/07/09

DATE:

07/07/09

DATE:

07/07/09

DRAWING TITLE:

Tactile Switch

SIZE DWG. NO.

A

Ta-1139

ELECTRONIC FILE

Ta-1139.dwg

REV

A

SCALE: NTS

U.O.M.: INCHES [mm]

SHEET: 1 OF 1