

DFN/DMN/DJN/DKN Series



Features

- ◆ Meets ATX specification & requirements
- ◆ User friendly interface
- ◆ Easy of use
- ◆ High reliability
- ◆ Easy access to upgrade options
- ◆ Glass filled polyester UL94V-0
- ◆ Contact: Phosphor bronze
- ◆ Spring: Phosphor bronze

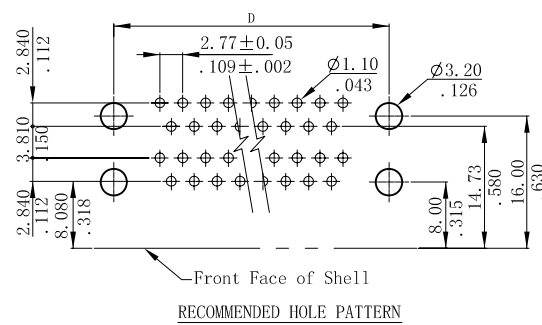
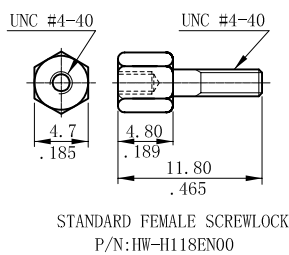
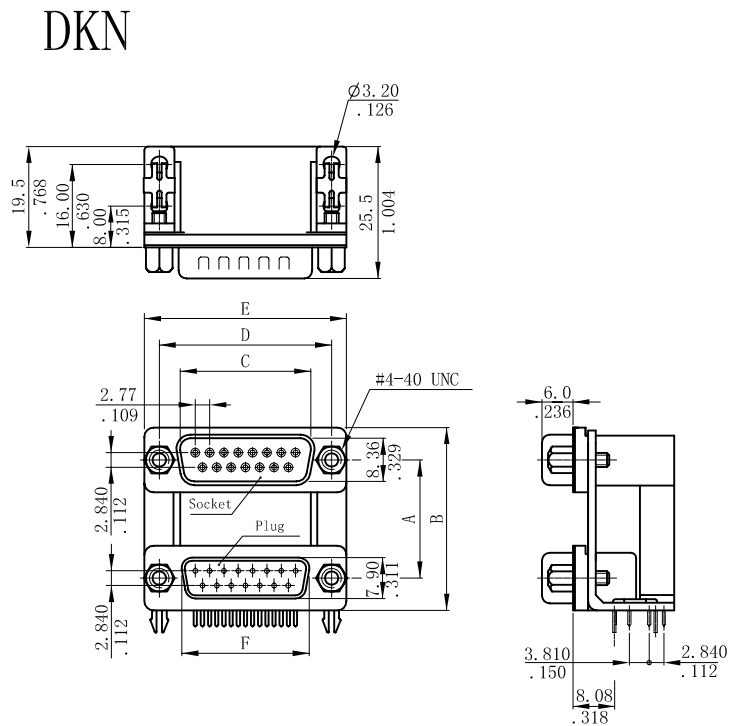
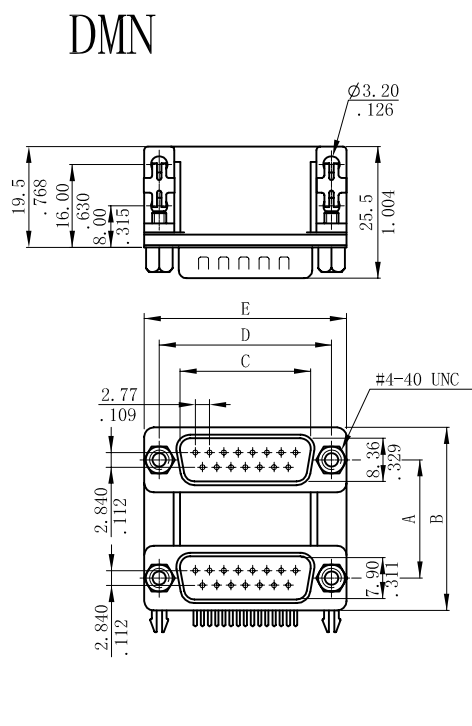
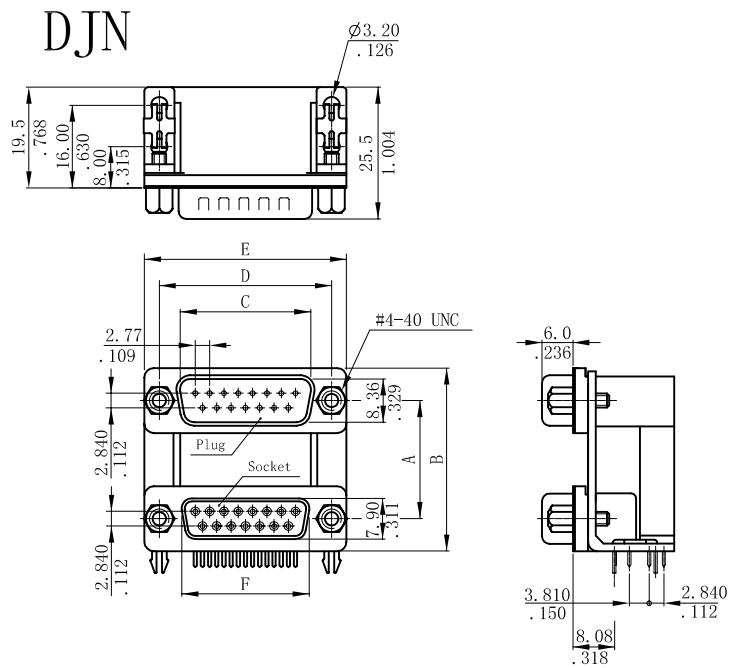
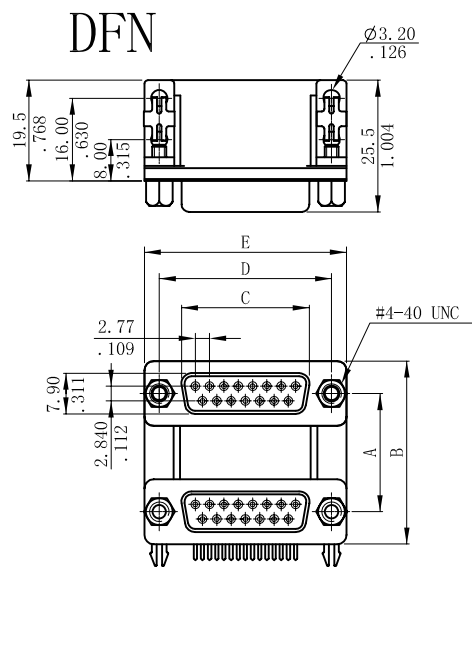
Ordering Information:

<u>D*~**</u>	<u>F</u>	<u>*</u>	<u>*</u>	<u>N</u>	<u>L2</u>
1	2	3	4	5	6

1. No. of circuits:
DE-09 = 9 circuits
DA-15 = 15 circuits
DB-25 = 25 circuits
2. Series No:
F : socket to socket
J : plug to socket
K: socket to plug
M : plug to plug
3. Connector body height option:
X : 15.88mm(.625")
Y : 19.05mm(.750")
Z : 22.86mm(.900")
4. Contact plating:
U = Gold flash over 30~50μ" nickel overall
W = 15μ" gold over 30~50μ" nickel overall
Z = 30μ" gold over 30~50μ" nickel overall
5. Female screwlock variations:
N = Riveted #4-40 UNC flush insert then
preloaded with #4-40 UNC hexagonal female screwlocks
6. Ground fixture variations:
L2 = With standard retaining clip ground strap

Specifications

- ◆ Current rating: 3A AC,DC
- ◆ Voltage rating: 250V AC,DC
- ◆ Temperature rating: -25°C ~ +105°C
- ◆ Contact resistance: 20mΩ max.
- ◆ Insulation resistance: 5,000MΩ min.
- ◆ Withstanding voltage: 1,000V AC /minute



Dimensional & Ordering Information:

Circuits	Dimension			
	Dim. C	Dim. D	Dim. E	Dim. F
DE-09***NL2	16.33 (.643)	24.99 (.984)	30.80 (1.213)	16.92 (.666)
DA-15***NL2	24.66 (.971)	33.32 (1.312)	39.10 (1.539)	25.25 (.994)
DB-25***NL2	38.38 (1.511)	47.04 (1.852)	53.00 (2.087)	38.96 (1.534)