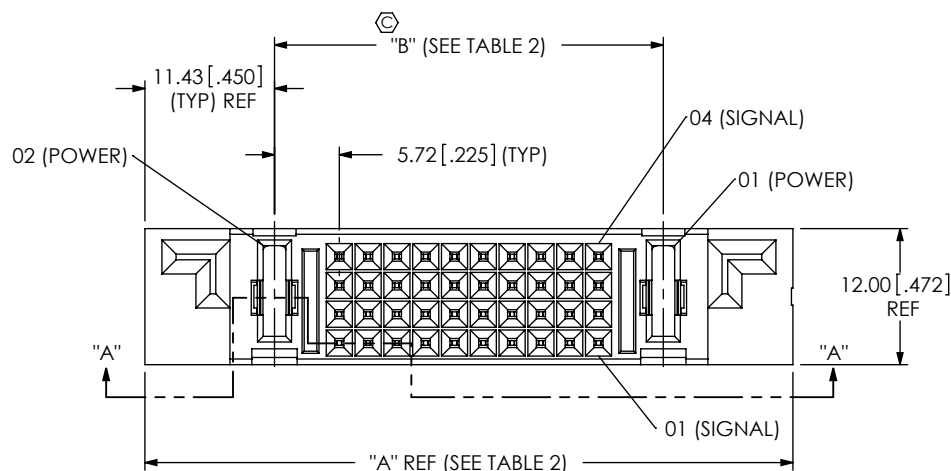


DO NOT  
SCALE FROM  
THIS PRINT

DESIGNED & DIMENSIONED  
IN MILLIMETERS[INCHES]



PESC-XX-XX-XX-01-X-VT-XX

**POWER PINS (PER END)**  
-01, -02, -04  
(SEE TABLE 1 FOR AVAILABLE COMBINATIONS)

**SIGNAL PINS**  
-12  
-40 (SEE TABLE 1 FOR AVAILABLE COMBINATIONS)

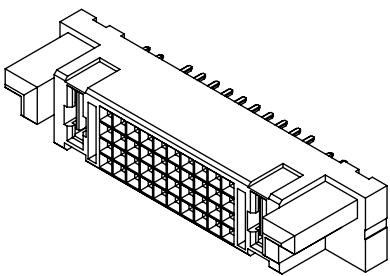
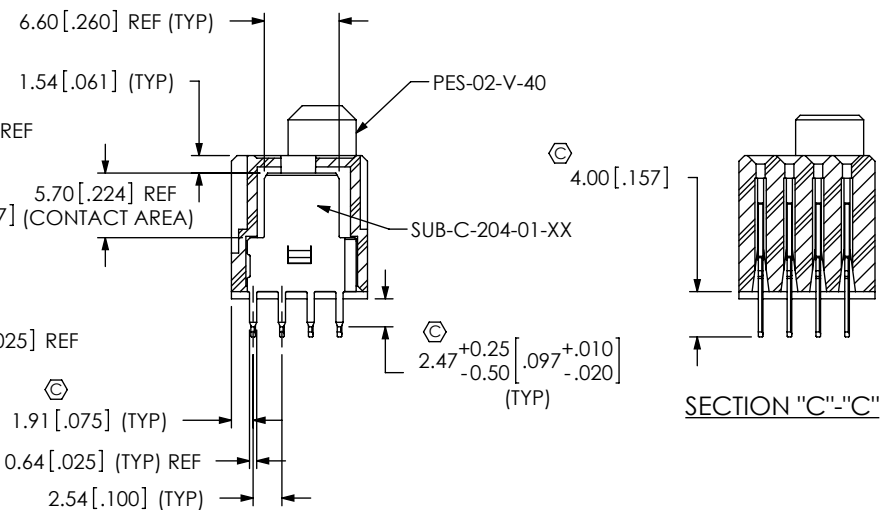
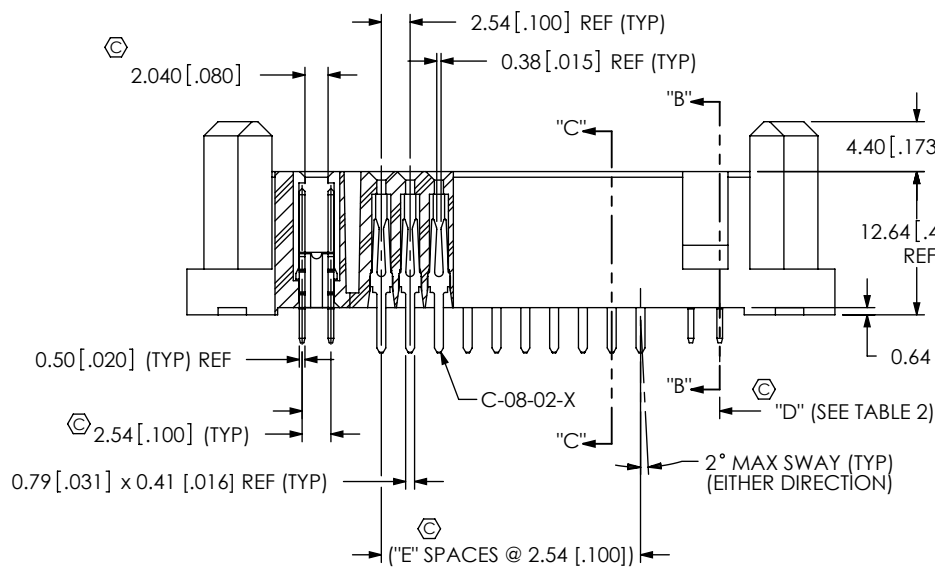
**POWER PINS (PER END)**  
-01, -02, -04 (SEE TABLE 1 FOR AVAILABLE COMBINATIONS)

**LEAD STYLE**  
-01

**OPTION**  
-LC: LOCKING CLIP  
(USE LC-11-TM)  
(SEE FIG 2, SHT 2)

**VERTICAL**

**PLATING SPECIFICATION**  
-S: 30μ" SELECTIVE GOLD IN CONTACT AREA, MATTE TIN ON TAIL  
-T: MATTE TIN CONTACT AND TAIL  
-L: 10μ" SELECTIVE GOLD IN CONTACT AREA, MATTE TIN ON TAIL



SECTION "A"- "A"

SECTION "B"- "B"

SECTION "C"- "C"

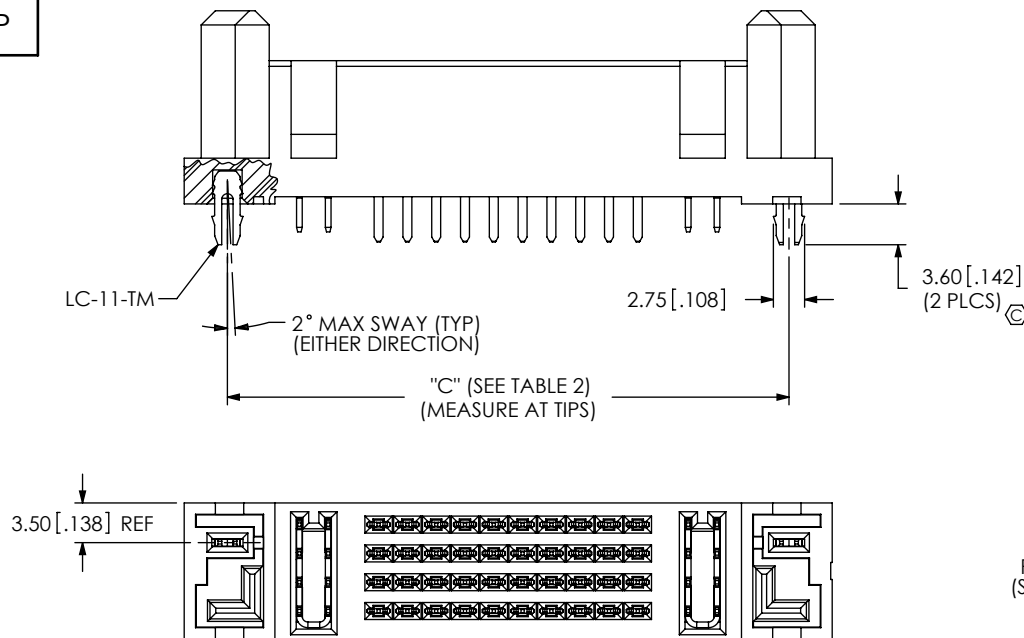
FIG 1  
PESC-01-40-01-01-X-VT SHOWN

TABLE 1			
PART NUMBER	MAX	"E"	
PESC-01-12-01-01-X-VT-XX	0.15 [.006]	2	
PESC-02-12-02-01-X-VT-XX	0.20 [.008]	2	
PESC-04-12-04-01-X-VT-XX	0.20 [.008]	2	
PESC-01-40-01-01-X-VT-XX	0.15 [.006]	9	
PESC-02-40-02-01-X-VT-XX	0.20 [.008]	9	
PESC-04-40-04-01-X-VT-XX	0.20 [.008]	9	

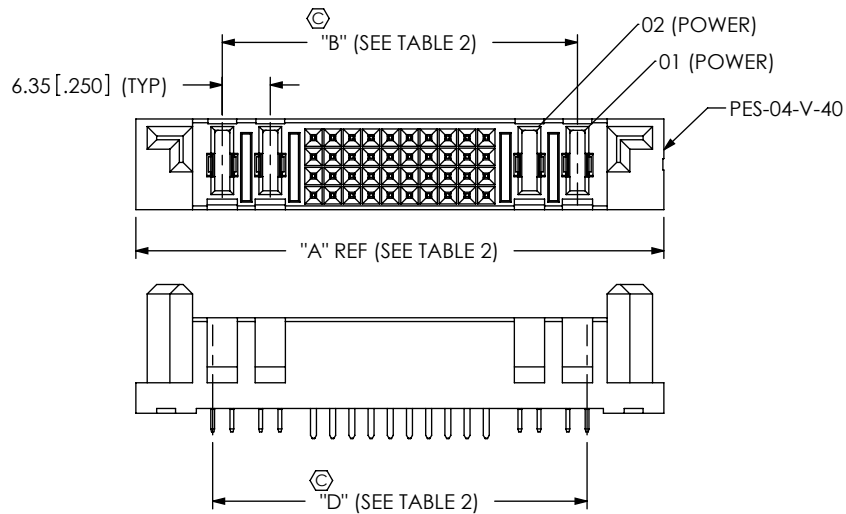
NOTES:

1. Ⓢ REPRESENTS A CRITICAL DIMENSION.
2. BURR ALLOWANCE: 0.13 [.005] MAX.
3. MINIMUM PUSHOUT FORCE: 2.22N [.5 LB].
4. PARTS TO BE PACKAGED IN TRAYS.

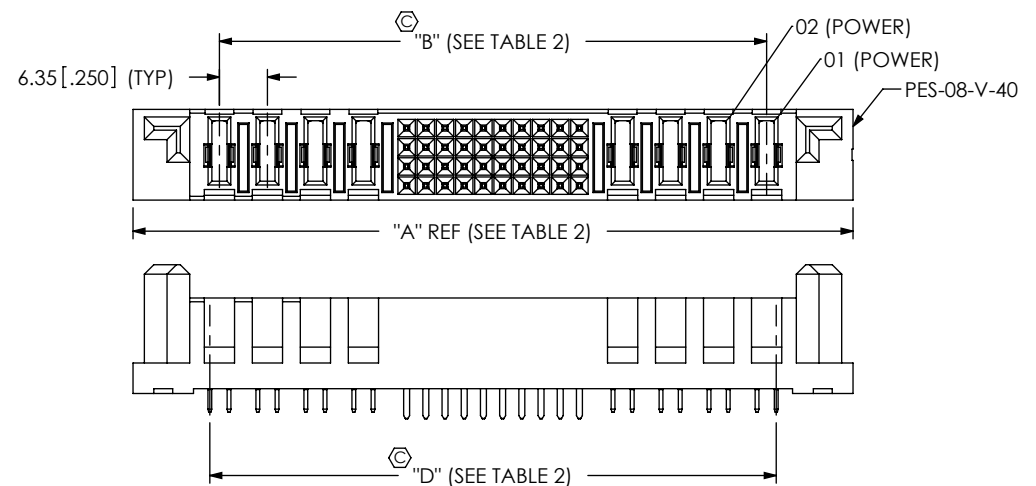
<b>CPC</b> FREQUENCY THIS SHEET  A C1, C4, C5, C7, C11, C13  B C6, C8  C  D	UNLESS OTHERWISE SPECIFIED, DIMENSIONS ARE IN MILLIMETERS.  TOLERANCES ARE:  DECIMALS ANGLES .X: ±0.3 [.01] 2° .XX: ±0.13 [.005] .XXX: ±0.051 [.0020]	<b>PROPRIETARY NOTE</b> THIS DOCUMENT CONTAINS INFORMATION CONFIDENTIAL AND PROPRIETARY TO SAMTEC, INC. AND SHALL NOT BE REPRODUCED OR TRANSFERRED TO OTHER DOCUMENTS OR DISCLOSED TO OTHERS OR USED FOR ANY PURPOSE OTHER THAN THAT WHICH IT WAS OBTAINED WITHOUT THE EXPRESSED WRITTEN CONSENT OF SAMTEC, INC.	<b>520 PARK EAST BLVD, NEW ALBANY, IN 47150</b> PHONE: 812-944-6733 FAX: 812-948-5047 e-Mail: info@SAMTEC.com code: 55322			
<b>MATERIAL:</b> DO NOT SCALE DRAWING SHEET SCALE: 1:0.666667 INSULATOR: LCP, COLOR: BLACK CONTACT: COPPER ALLOY						
<b>DESCRIPTION:</b> VERTICAL POWER SOCKET						
<b>DWG. NO.</b> PESC-XX-XX-XX-01-X-VT-XX						
<b>BY:</b> CLAY W 1/10/2006 SHEET 1 OF 2						



**FIG 2**  
PESC-01-40-01-01-X-VT-LC SHOWN  
(SAME AS FIG 1, EXCEPT AS SHOWN)



**FIG 3**  
PESC-02-40-02-01-X-VT SHOWN  
(SAME AS FIG 1 EXCEPT AS SHOWN)



**FIG 4**  
PESC-04-40-04-01-X-VT SHOWN  
(SAME AS FIG 1 EXCEPT AS SHOWN)

TABLE 2				
PART NUMBER	"A"	"B"	"C"	"D"
PESC-01-12-01-01-X-VT-XX	39.37 [1.550]	16.51 [.650]	31.75 [1.250]	19.05 [.750]
PESC-02-12-02-01-X-VT-XX	52.07 [2.050]	29.21 [1.150]	44.45 [1.750]	31.75 [1.250]
PESC-04-12-04-01-X-VT-XX	77.47 [3.050]	54.61 [2.150]	69.85 [2.750]	57.13 [2.250]
PESC-01-40-01-01-X-VT-XX	57.15 [2.250]	34.29 [1.350]	49.53 [1.950]	36.83 [1.450]
PESC-02-40-02-01-X-VT-XX	69.85 [2.750]	46.99 [1.850]	62.23 [2.450]	49.53 [1.950]
PESC-04-40-04-01-X-VT-XX	95.25 [3.750]	72.39 [2.850]	87.63 [3.450]	74.93 [2.950]

F:\DWG\MISC\MKTG\PESC-XX-XX-XX-01-X-VT-XX-MKT.SLDDRW

CPC FREQUENCY THIS SHEET	
A	C1, C11
B	C9
C	
D	

**PROPRIETARY NOTE**  
THIS DOCUMENT CONTAINS INFORMATION  
CONFIDENTIAL AND PROPRIETARY TO  
SAMTEC, INC. AND SHALL NOT BE REPRODUCED  
OR TRANSFERRED TO OTHER DOCUMENTS OR  
DISCLOSED TO OTHERS OR USED FOR ANY  
PURPOSE OTHER THAN THAT WHICH IT WAS  
OBTAINED WITHOUT THE EXPRESSED WRITTEN  
CONSENT OF SAMTEC, INC.

DO NOT SCALE DRAWING

SHEET SCALE: 1:0.666667

**samtec**

520 PARK EAST BLVD, NEW ALBANY, IN 47150  
PHONE: 812-944-6733 FAX: 812-948-5047  
e-Mail: info@SAMTEC.com code: 55322

DESCRIPTION:  
VERTICAL POWER SOCKET

DWG. NO.  
**PESC-XX-XX-XX-01-X-VT-XX**

BY: CLAY W 1/10/2006 SHEET 2 OF 2