



PRODUCT SEARCH

983-US/05

e.g.20.874.002

PRODUCTS

COMPANY

CONTACT US

SUPPORT

SITE MAP

PRODUCTS

CROSS-REFERENCE

Screw and Tab Connectors for Printed Circuit Boards

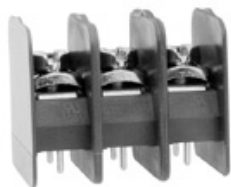
TYPE 983-US /-UD /-UW

10 mm spacing - 2 to 7 poles



Distributor Stock Check

Series	Download PDF	3D Model	Can plug with	How to order	Color specifications	Print
--------	--------------	----------	---------------	--------------	----------------------	-------



RoHS WEEE Pb free surface compliant

Description

This 600 volt, 10 mm (0.393 in.) pitch PCB mounted barrier block has feed-through screw held wire connections above the PCB and special barriers that protrude through the PCB in slots prepared for that purpose.

These blocks require slots to be cut through the printed circuit board to allow for the extended barriers designed into the base.

PCB slots must measure 2.0 x 25.4 mm (0.079 x 1.000 in.).

- Barrier strip connector
- 1 or 2 PCB Pins per pole

Technical Data

Center to Center Spacing: 10 mm (0.394 in.)

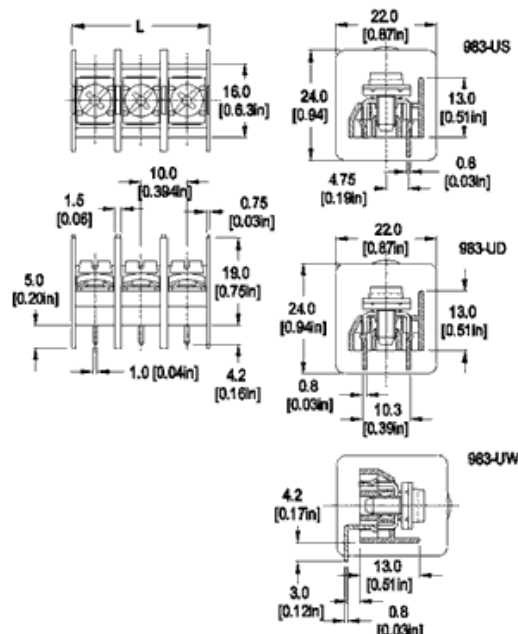
Nominal Cross Section: 2.5 mm² (3874 mils²)

Wire Stripping Length: 8.5 mm (0.33 in.)

Recommended Hole Diameter in PC Board: 1.3 mm (0.051 in.)

Application

This block does everything other barrier blocks of its size do and more. These are excellent for single-phase or three-phase applications up to 600 volts. Lighting, motive power, HVAC and all connections where a heavy-duty block is required.



Dimensions: mm (in.)

Length of Connector (L)

L = No. of Poles x Center to Center Spacing

When locating connector, allow 0.5 mm clearance around it for process-induced variations.

Approval Information

UL File No.E69841



CSA File No.LR24322



Rating	Current(A)	Voltage(V)	Application group	AWG
UL	20	600	B,C	20-12
CSA	20	600	B,C,D,E	22-10

Screw Tightening Torque:

UL: 10.0 lbf·in

CSA: 1.13 Nm

Rated Impulse Withstand Voltage: 8000 V

Material

Molding: Polyamide 4.6, self extinguishing UL 94, V-0, color black

Temperature limits:

Short Time: 260°C (500°F)

Continuous: RTI 105°C (221°F)

Low Limit: -40°C (-40°F)

Comparative Tracking Index: CTI≥600V

Oxygen Index Rating: 37%

Terminal Body: Tin plated copper alloy

Screw and Washer: M4, Nickel plated steel

PCB Pin: 0.8 x 1.0 mm (0.03 x 0.04 in.), Tin plated copper alloy

[Top of page](#)

How to order

Item — **983-US /-UD /-UW**

Options

- ☐ G05: Gold Plating (5 micro inches)
- ☐ G30: Gold Plating (30 micro inches)
- ☐ S30: Silver Plating (30 micro inches)
- ☐ 10MM: Solder Pin length of 10 mm (0.39 in.)
- ☐ CS: Captive Screws



Request sample



Request quote

Quantity

1

Accessories

Note: Plated component: terminal body 10MM for Types 983-US /-UD only

983- U	WIRE ENTRY:	POLES:
	Parallel (1 pin per pole): S Parallel (2 pins per pole): D	02 to 07
	Perpendicular (1 pin per pole): W	
	<input type="text"/>	<input type="text"/>

[Add to shopping cart](#)

2008, WECO Electrical Connectors Inc.

ISO 9001 registered quality management system