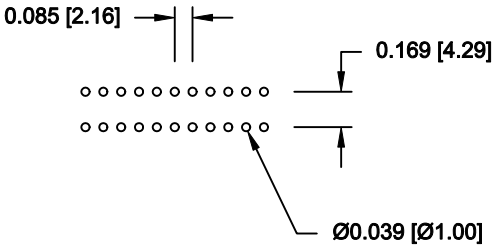
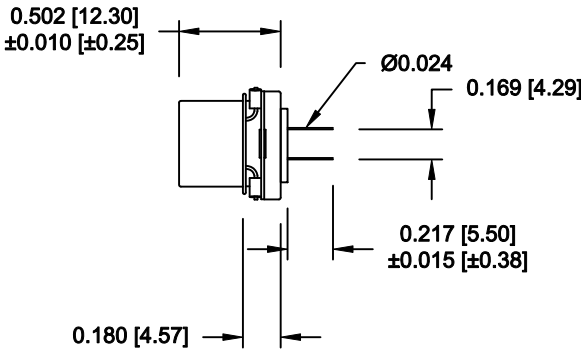
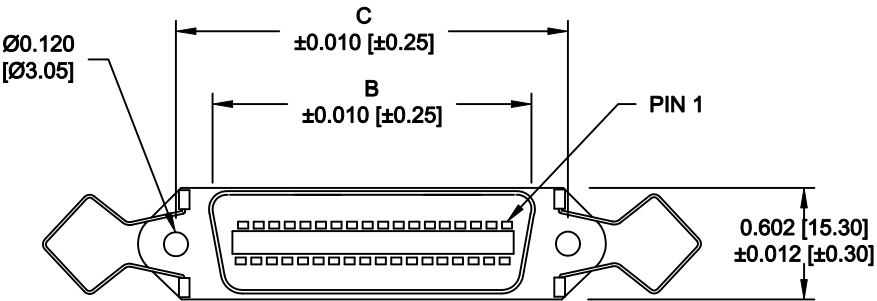
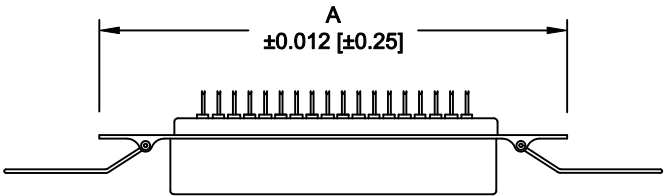


DESCRIPTION: 0.085 RIBBON - DIP SOLDER

	014	024	036	050
A	1.728	2.154	2.667	3.264
	43.90	54.70	67.75	82.90
B	0.992	1.417	1.925	2.624
	25.20	36.00	48.90	64.10
C	1.417	1.843	2.352	2.947
	36.00	46.80	59.74	74.85



MATERIAL:

INSULATION: GLASS- FILLED THERMOPLASTIC
UL RATED 94V-0, 230°C PROCESS TEMP.
CONTACTS: COPPER ALLOY
CONTACT PLATING: GOLD FLASH IN THE MATING AREA
BRIGHT TIN IN THE SOLDER AREA
SHELL: STEEL, NICKEL PLATED


ELECTRICAL:

CURRENT RATING: 1 AMP
VOLTAGE RATING: 1,000V AC r.m.s.
INSULATION RESISTANCE: 1,000MegOhms Min. @ 500VDC
CONTACT RESISTANCE: 30MilliOhms Max.
OPERATING TEMPERATURE: -55°C TO +125°C

111-YYY-2 1 3 L 00 1

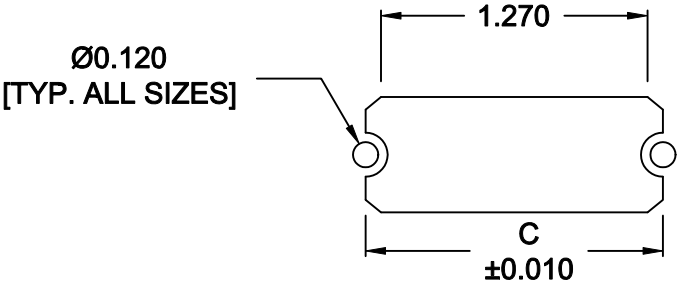
SERIES
POSITIONS
014
024
036
050
GENDER
2 = FEMALE
TERMINATION
1 = DIP SOLDER
RoHS COMPLIANT
L = LOW TEMP. PROCESS
SHELL PLATING
3 = NICKEL
HARDWARE
00 = NO HARDWARE
PLATING
1 = GOLD FLASH

DO NOT SCALE FROM DRAWING

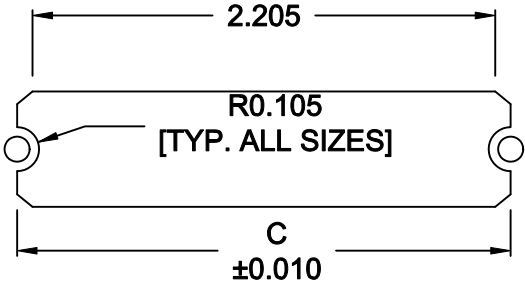
	THESE DRAWINGS AND SPECIFICATIONS ARE THE PROPERTY OF NorComp AND SHALL NOT BE REPRODUCED, COPIED OR USED AS THE BASIS FOR THE MANUFACTURE OF SALE OF APPARATUS WITHOUT WRITTEN PERMISSION.	DRAWN: WAYNE ROBBINS		DATE: 09-15-05		
		CHECKED:		DATE:		
NorComp		SCALE: NONE		SHEET 1 OF 2		REV 9
		DWG NO. 111-YYY-213L001				

RoHS COMPLIANT

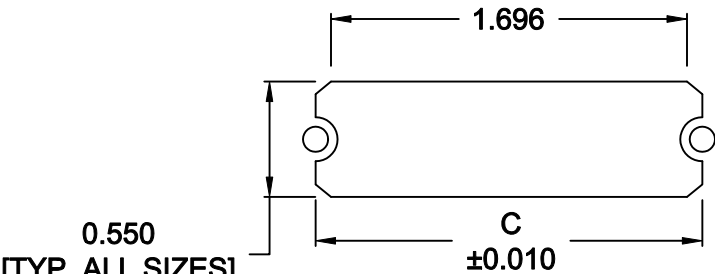
	014	024	036	050
C	1.417	1.843	2.352	2.947
	36.00	46.80	59.74	74.85



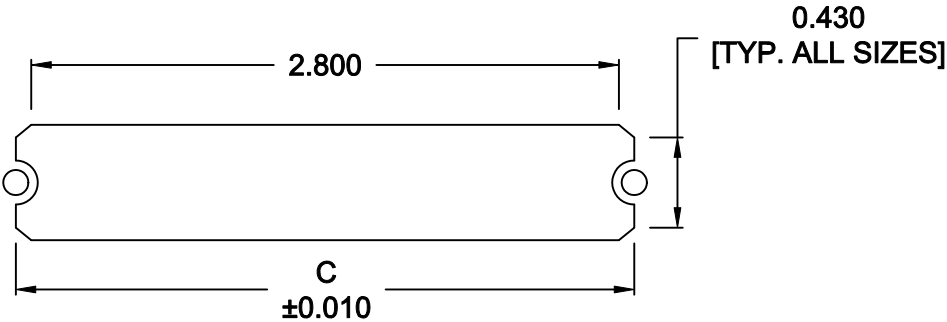
14 POSITION



36 POSITION



24 POSITION




50 POSITION

NOTEDIMENSION "C" =
CENTER TO CENTER OF MOUNTING HOLES
CENTER OF RADI
OVERALL LENGTH OF CUTOUT

RoHS COMPLIANT

DO NOT SCALE FROM DRAWING

	THESE DRAWINGS AND SPECIFICATIONS ARE THE PROPERTY OF NorComp AND SHALL NOT BE REPRODUCED, COPIED OR USED AS THE BASIS FOR THE MANUFACTURE OF SALE OF APPARATUS WITHOUT WRITTEN PERMISSION.	DRAWN: M. SIGMON		DATE: 01-14-11		
		CHECKED:		DATE:		
<h1>NorComp</h1>			SCALE: NONE	SHEET 2 OF 2		REV 9
			DWG NO. 111-YYY-213L001			