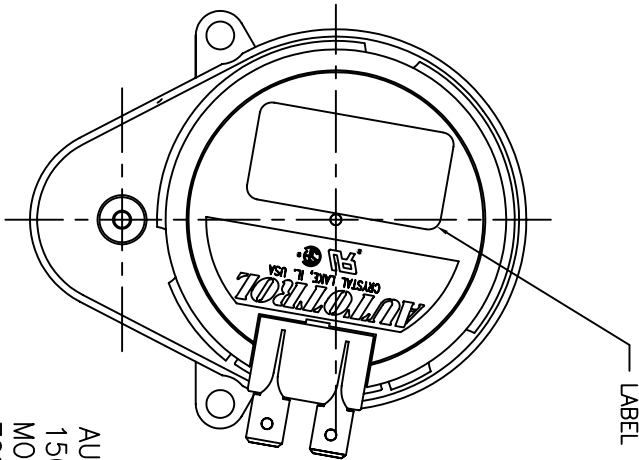
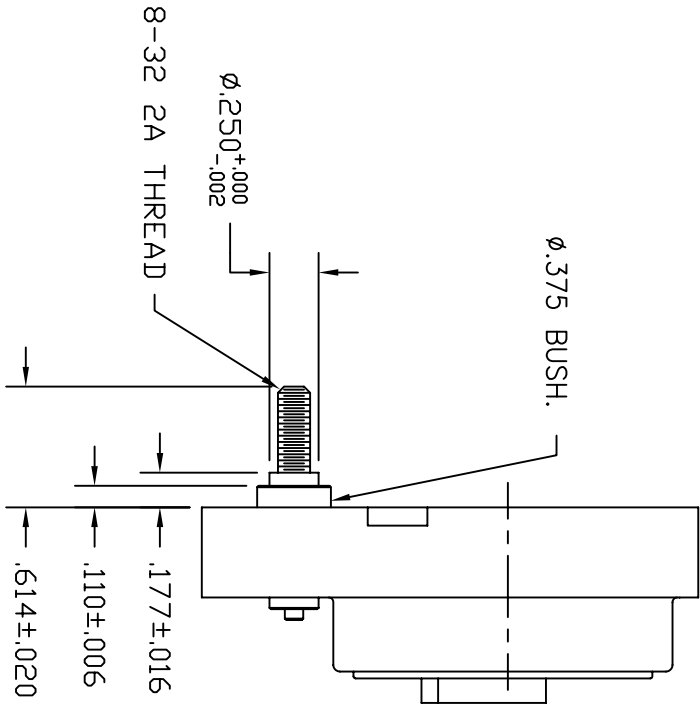


NOTES:

- 1. TORQUE REQUIRED: 103 IN-OZ MIN. (VARIABLE) AS MEASURED WITH A TORQUE WATCH IN A CLOCKWISE DIRECTION AT RATED VOLTAGE AND SPEED.
- 2. OUTPUT SHAFT ENDPLAY TO BE .002-.022.
- 3. THIS PRODUCT AND ITS COMPONENTS MUST BE RoHS COMPLIANT PER EU DIRECTIVES 2002/95/EC AND 2003/11/EC.

CONFIDENTIAL AND
PROPRIETARY INFORMATION



LABEL INFO:

AUTOTROL CORP.
150-1529A
MOUSER ELECTRONICS
708-1501529A Ⓐ
115V 60Hz 1 RPM CW
(YYMMDD)

(DATE CODE-YYMMDD)

AUTOTROL CORPORATION **AEV**

DRAWN BY: AEV SCALE: APPROVED BY:

DATE: 05/04/07 CHECKED BY: E.R.N. # 10927

TITLE:

MOTOR

CUSTOMER SIGN-OFF:
NAME: _____
DATE: _____

A	ECO #10984	07-10-07	DAE				
REVISIONS							

CUSTOMER: MOUSER ELECTRONICS 708-1501529A Ⓐ	TOLERANCE: DECIMALS ±.002 FRACTIONS ±.008	PART NO.: 150-1529A
---	---	------------------------

Mouser Electronics

Authorized Distributor

Click to View Pricing, Inventory, Delivery & Lifecycle Information:

[Autotrol:](#)

[150-1529A](#)