

Lockout Timer

TA Series

HVAC/R Timer



10 YEAR
WARRANTY

- Lockout Delay--Prevents Rapid Recycling of a Compressor
- Low Voltage Brownout Protection
- Circuitry to Activate the Cooling Anticipator (24 V AC Models)
- Eliminates Nuisance Service Calls Due to Blown Fuse or Tripped Breakers

Approvals: (24 V AC only)

Accessories

Female quick connect
P/N: **P1015-64** (AWG 14/16)

Quick connect to screw adaptor
P/N: **P1015-18**

Mounting bracket
P/N: **P1023-6**

DIN rail P/Ns:
C103PM (Al)
DIN rail adaptor
P/N: **P1023-20**

See accessory pages for specifications.

Description

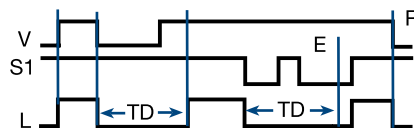
The TA Series prevents rapid recycling of a compressor. A lockout delay is started when the thermostat opens, or input voltage is lost. Eliminates tripped circuit breakers or blown fuses caused by a locked rotor during short cycling. The TA will not allow the compressor to start when the line voltage is low. Chatter of the compressor relay is eliminated. Because of the fast initiate time, bounce of the thermostat will not be transmitted to the compressor relay coil. A 30 second delay provides anti-reversing protection for scroll compressors.

Operation

On initial closure of the S1, the compressor relay energizes immediately. When S1 opens or input voltage is interrupted, a lockout time delay is initiated. During this lockout time delay, the compressor relay cannot be energized. The low voltage (*brownout*) protection prevents energization of the compressor when the line voltage is low.

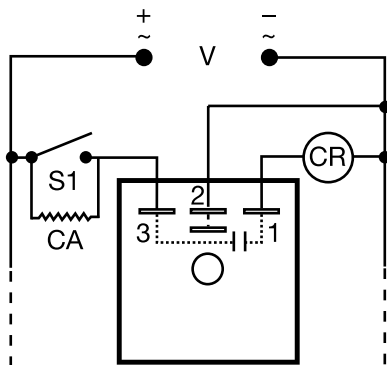
Reset: The lockout time delay cannot be reset.

Function



V = Voltage S1 = Initiate Switch or Thermostat
L = Load (CR) E = Ready R = Reset
TD = Time Delay

Connection



Dashed lines are internal connections.

S1 = Initiate Switch, Contact, or Thermostat
CR = Compressor Relay (Load) CA = Optional Cooling Anticipator

Available Models-

TA12D2
•TA24A3

TA24A0.5
•TA24A5

TA24A2

Don't see what you need? Call us for a minimum quantity and price quote!

Ordering Table

Input	Time Delay	Part Number
24 V AC	30 s	TA24A0.5
24 V AC	2 m	TA24A2
24 V AC	3 m	TA24A3
24 V AC	5 m	TA24A5
12 V DC	1 m	TA12D1
24 V DC	30 s	TA24D0.5
24 V DC	2 m	TA24D2
24 V DC	3 m	TA24D3
24 V DC	5 m	TA24D5

Lockout Timer

TA Series

HVAC/R Timer

Dedicated
timers

Technical Data

Input	
Voltage/Frequency	12 or 24 V DC; 24 V AC, 50 ... 60 Hz
Impedance	450 Ω (anticipator by-pass)
Output	
Minimum Load Current	75 mA
Maximum Load Current	1 A at 60°C
Voltage Drop	≤ 1.25 V
Time Delay	
Initiate Time	$\cong 16$ ms
Lockout Time	Fixed 0.5, 1, 2, 3, or 5 m
Tolerance	-15% ... +35%
Protection	
Circuitry	Encapsulated
Low Voltage Protection	$\cong 20$ V: 24 V AC/DC; $\cong 9$ V: 12 V DC
Dielectric Breakdown	≥ 2000 V RMS terminals to mounting surface
Insulation Resistance	≥ 100 M Ω
Mechanical	
Mounting	Surface mount with one #10 (M5 x 0.8) screw
Package	2 x 2 x 1.21 in. (50.8 x 50.8 x 30.7 mm)
Termination	0.25 in. (6.35 mm) male quick connect terminals
Environmental	
Operating Temperature	-40°C ... +70°C
Storage Temperature	-40°C ... +85°C
Humidity	95% relative, non-condensing
Weight	$\cong 2.4$ oz (68 g)
Thermostat	
Cooling Anticipator Resistor	≥ 1800 Ω

5

Mechanical View

