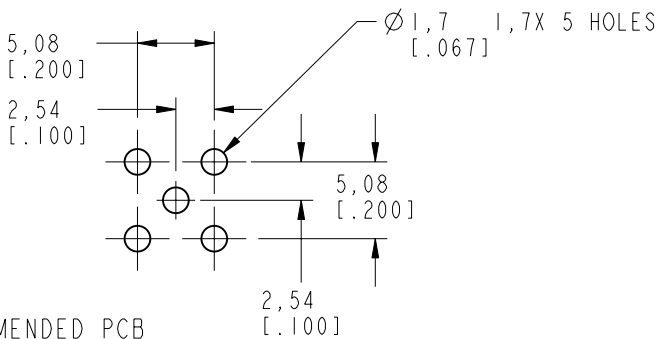
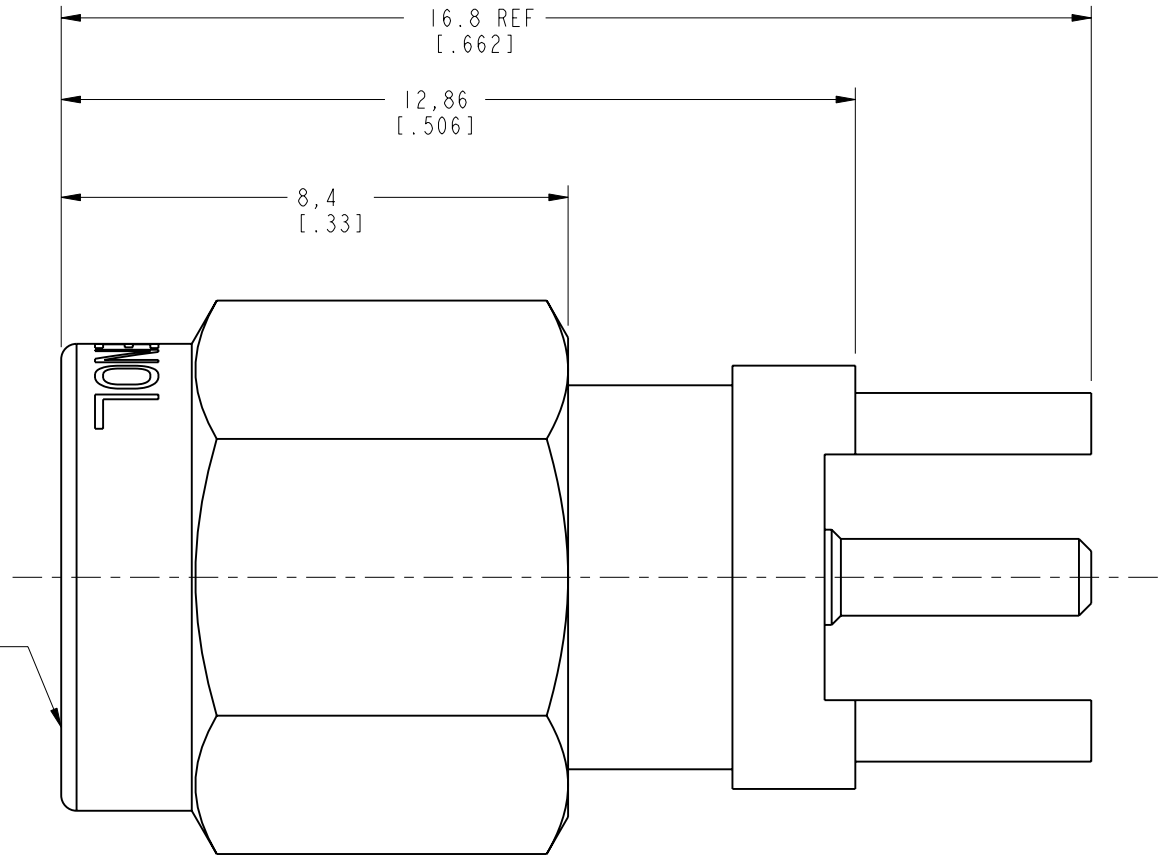
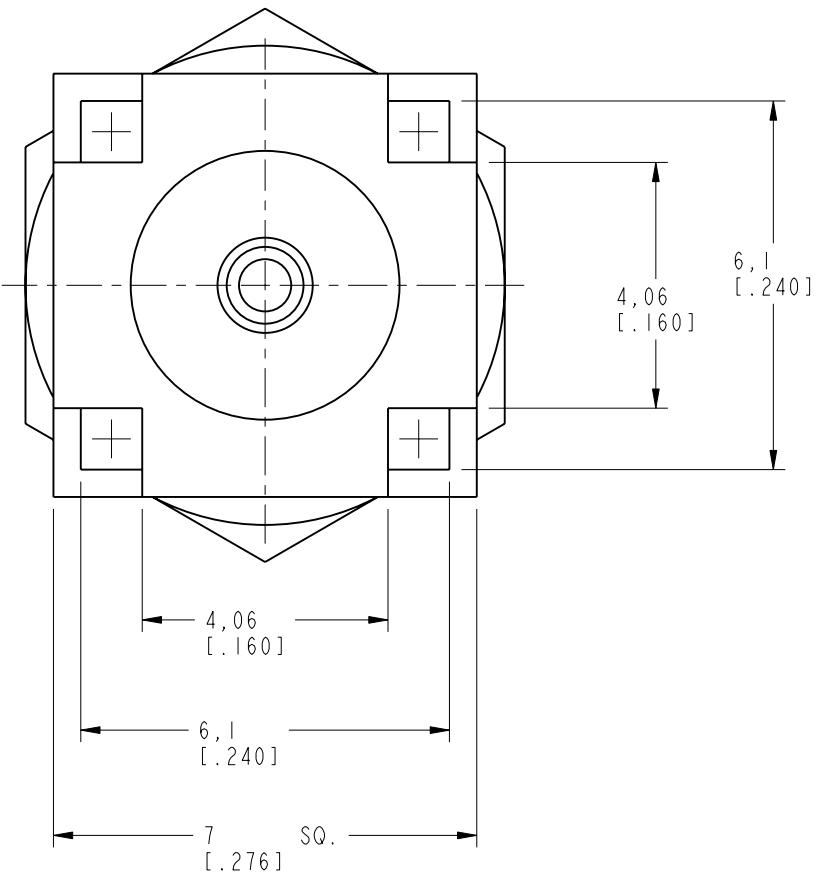
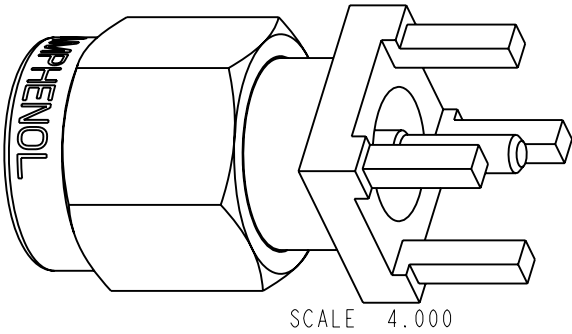


NOTES:

1. MATERIALS OF CONSTRUCTION:  
BODY, RING & SHELL = BRASS, GOLD PLATED  
CONTACT PIN = BRASS, GOLD PLATED  
RETAINER RING = BeCu, NATURAL  
INSULATORS (2) = TEFLON, PER MIL-P-19468  
GASKET = SILICONE RUBBER, COLOR RED



RECOMMENDED PCB  
MOUNTING HOLE  
SCALE 2.000



**CUSTOMER OUTLINE DRAWING**  
ALL OTHER SHEETS ARE FOR INTERNAL USE ONLY

UNLESS OTHERWISE SPECIFIED, DIMENSIONS ARE IN MM (INCHES) AND TOLERANCES ARE:  
0.5 - 6mm ±0.2mm  
6 - 30mm ±0.4mm  
30 - 120mm ±0.6mm

NOTICE - These drawings, specifications, or other data (1) are, and remain the property of Amphenol Corp. (2) must be returned upon request; and (3) are confidential and not to be disclosed to any person other than those to whom they are given by Amphenol Corp. The furnishing of these drawings, specifications, or other data by Amphenol Corp., or to any other person to anyone for any purpose is not to be regarded by implication or otherwise in any manner licensing, granting rights or permitting such holder or any other person to manufacture, use or sell any product, process or design, patented or otherwise, that may in any way be related to or disclosed by said drawings, specifications, or other data.

MATERIAL

REFERENCE  
EAR 967689-0  
GEN# 910-144-8RFX\_ASSY

DRAWN  
C. McGRATH

ENGINEER  
O. BARTHELMES

APPROVED  
O. BARTHELMES

CAD FILE  
I:\SMA\ 901-9895-RFX

DATE  
1/10/01

DATE  
1/10/01

DATE  
1/25/01

TITLE

SMA PCB MOUNT  
PLUG

CODE ID  
74868

DWG SIZE  
B

DRAWING NO.  
901-9895-RFX

**Amphenol**  
Amphenol Corporation  
Communication and Network  
Products Division  
Danbury, CT U.S.A. 06810

SCALE: 8.0:1 SHEET 2 OF 2

REV  
B