

ATTRACTIVE AND RUGGED FOR WET AND DUSTY ENVIRONMENTS

The OTTO K3 series is a quality, precision switch designed to comply with standards established for appliance, marine (ignition protection) and off-road vehicles along with other demanding applications where rugged rocker switches are required.

K3 series sealed rocker switches snap into industry-standard panel cutouts. Choose illuminated and printed legends, thru-panel drain option, and switching compatibility from low level to 20 amps.

The K3 series offers a choice of LED, incandescent and neon illumination. Legends can be stamped onto a non-illuminated button, stamped onto an illuminated lens, or laser etched into the lens and backlit.

Available in standard and low level contact ratings, the K3 rockers will fit a wide range of applications. Expect a minimum of 25,000 cycles at a full rated load of 20 amps resistive or 15 amps inductive. 100,000 cycles are possible at low level loads. A full complement of switch operation is available including momentary and maintained action in 2- or 3-position switches in SPST, SPDT, SPTT, DPST, and DPDT circuit arrangements.

OTTO can provide custom colors upon request. Value-added assemblies with wire leads are also available. Please consult the factory for assistance.

Quality Features:

- Submersible, sealed watertight per IP68
- Snap-in panel mounting into industry standard panel cutout
- Optional panel seal gasket
- Thru-panel drain option
- LED, neon and incandescent lighting
- .250" Q.C. terminals
- Optional one-piece connector
- Optional terminal barriers
- Low level to 20 amp switch



Standard Characteristics/Ratings:

OPERATIONAL:

Mechanical Life:	100,000 cycles, minimum
Seal:	Watertight. Submersible to IP68
Operating Temperature Range:	-40°C to +85°C
Button/Case:	Thermoplastic.
Mounting:	Snap-In from front into industry standard panel cutout
Contacts:	Silver Alloy. Gold flash for low level
Terminals:	Brass 1/4" Q.C. Standard
Light Source:	6V, 12V, 24V Incandescent; 125V, 250V Neon; 2V, 6V, 12V, 24V red, green, amber LED

ELECTRICAL:

LOAD Type	CURRENT RATING		LIFE (Min.)
	12V & 28V	110VAC	
Resistive	20A	16A	25,000 cycles
Inductive	15A	15A	25,000 cycles
Lamp	5A	5A	25,000 cycles
Motor Load:	1/2 HP at 110 VAC		
Dielectric Withstand:	1050 Vrms except across light terminals		

Compliance Standards (Pending):

EN61508-1 for appliance switches
UL 1054 for special use switches
UL 1500 for ignition protection of marine products
SAE J1455 for heavy duty trucks

SEALED, ILLUMINATED ROCKER SWITCHES

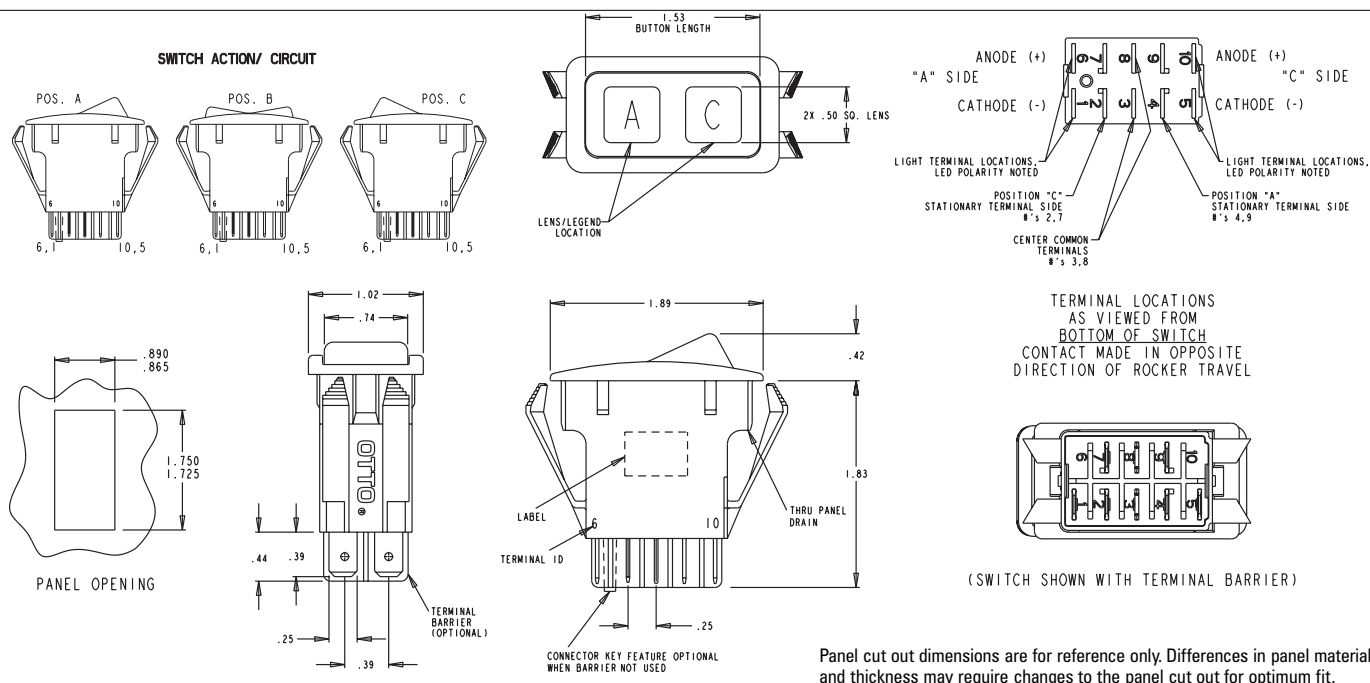
SNAP-IN PANEL MOUNTING

Standard Legends Per SAE Specifications

A1  ANCHOR	K2  UNLOCK	P5  BILGE BLOWER
B1  BATTERY	L1  LIGHT	R1  LIFT
B2  ELECTRIC POWER	L2  MASTER LIGHTING SWITCH	R2  LOWER
C1  AC/COOLING SYSTEMS	L3  HEADLIGHTS	R3  UP
C2  DEHUMIDIFIER	L4  HEADLIGHTS-LOW / DIPPED BEAM	R4  DOWN
C3  HEATER/INTERIOR HEATING	L5  HEADLIGHTS-HIGH / UPPER BEAM	R5  RIGHT
D1  WINDSHIELD DEFROSTER	L6  PARKING LIGHT	R6  LEFT
D2  REAR WINDOW DEFROSTER	L7  WORK LAMP	R7 FWD FORWARD
D3  MIRROR DEFROSTER	L8  WORK LAMP	R8 REV REVERSE
E1  ENGINE/START	L9  INTERIOR DOME LIGHT	S1  RADIO
E2  ENGINE/STOP	M1  BEACON	S2  MUTE
E3  ON/START	M2  HAZARD/POSITION LIGHTS	T1  FAST
E4  OFF/STOP	M3  CLEARANCE LIGHTS	T2  SLOW
E5 ON ON	M4  SIDE MARKER LIGHT	T3  TRIM TAB / TRIMMING OPERATION
E6 OFF OFF	M5  RUNNING LIGHTS (UNDER POWER)	T4  TRANSMISSION
E7  ENGINE ELECTRIC PREHEAT	M6  ANCHOR LIGHT	V1  VENTILATING / AC FAN
E8  ENGINE-GAS INJECTION	M7  RUNNING/ANCHOR LIGHTS	W1  WINDSHIELD WIPER
F1  FRONT FOG LIGHTS	M8  SEARCH LIGHT	W2  WINDSHIELD-WASHER
F2  REAR FOG LIGHTS	M9  LEFT TURN SIGNAL	W3  WINDSHIELD-WASHER/WIPER
G1  FUEL	MA  RIGHT TURN SIGNAL	W4  REAR WINDOW WIPER
H1  HORN	P1  BILGE PUMP #1	W5  REAR WINDOW-WASHER
H2  HORN REAR	P2  BILGE PUMP #2	W6  REAR WINDOW-WASHER/WIPER
K1  LOCK	P3  BILGE PUMP #3	ZZ NO LEGEND
	P4  BILGE PUMP	

For legends not shown, please consult an OTTO representative.

SNAP-IN PANEL MOUNTING



K3 Series PART

Terminal Style/ Switch Rating/Plating	Bezel and Actuator Color and Case Style	Code	Switch Action/Circuit			Light Source Type	Light Circuit
			Position "A"	Position "B"	Position "C"		
A. Without Terminal Barriers/ Standard Rating/Silver Plating	A. Black Rocker and Bezel with Drain Holes	1A	ON	NONE	OFF	SPST	A. No Light
B. Without Terminal Barriers & Connector Keying Pin/ Standard Rating/Silver Plating	B. Black Rocker and Bezel without Drain Holes	2A	ON	NONE	OFF	DPST	B. Dep. in "A"
C. With Terminal Barriers/ Standard Rating/Silver Plating	C. Red Rocker and Bezel with Drain Holes	1B	ON	NONE	ON	SPDT	C. Dep. in "C"
D. Without Terminal Barriers/ Low Level Rating/Gold Plating	D. Red Rocker and Bezel without Drain Holes	2B	ON	NONE	ON	DPDT	D. Ind. in "A"
E. Without Terminal Barriers & Connector Keying Pin/Low Level Rating/Gold Plating	E. White Rocker and Bezel with Drain Holes	1C	MOM-ON	NONE	OFF	SPST	E. Ind. in "C"
F. With Terminal Barriers/Low Level Rating/Gold Plating	F. White Rocker and Bezel without Drain Holes	2C	MOM-ON	NONE	OFF	DPST	F. Dep. in "A" & "C"
G. Without Terminal Barriers/ Standard Rating/No Plating		1D	MOM-ON	NONE	ON	SPDT	G. Dep. in "A" & Ind. in "C"
H. Without Terminal Barriers & Connector Pin/Standard Rating/ No Plating		2D	MOM-ON	NONE	ON	DPDT	H. Ind. in "A" & Dep. in "C"
J. With Terminal Barriers/Standard Rating/No Plating		1E	MOM-ON	OFF	MOM-ON	SPDT	J. Ind. in "A" & "C"
		2E	MOM-ON	OFF	MOM-ON	DPDT	
		1F	ON	OFF	ON	SPDT	
		2F	ON	OFF	ON	DPDT	
		1G	MOM-ON	OFF	ON	SPDT	
		2G	MOM-ON	OFF	ON	DPDT	
		1H	ON	ON	OFF	SPDT	
		1J	ON	ON	NONE	SPDT	
		2J	ON	ON	NONE	DPDT	
		1K	MOM-ON	ON	OFF	SPDT	
		1L	MOM-ON	ON	NONE	SPDT	
		2L	MOM-ON	ON	NONE	DPDT	
		1M	ON	ON	ON	SPTT	
		1N	MOM-ON	ON	ON	SPTT	
		1P	MOM-ON	ON	MOM-ON	SPTT	
		2R	ON/ON	OFF/ON	OFF/OFF	DPDT	
		2S	MOM-ON/ON	OFF/ON	OFF/OFF	DPDT	

Stop Here for unlighted switches without legends. The switch you have specified will be supplied with a rocker button without lenses and without legends. Example: K3AA1FAA

SEALED, ILLUMINATED ROCKER SWITCHES

ATTRACTIVE AND RUGGED FOR WET & DUSTY ENVIRONMENTS

Part Numbering Example:

K3DB1ENJ-21T1T2994

Switch Description

K3 rocker switch
for low level switching, without terminal barriers
featuring a black rocker and bezel without drain holes
in a SPDT, Mom On – Off – Mom On circuit arrangement
with 12VDC red LEDs
lit independently in both positions

Switch Description

Green lens in Position A and a Red lens in Position C are respectively pad-printed with Rabbit Legend in Position A Turtle legend in Position B both in white
with the legends rotated 270° so that the switch can be mounted in the panel vertically with the Rabbit at the top of the switch

NUMBERING CODE

Position "A"	Lens Color	Position "C"
1. Transparent Red	1. Transparent Red	1. Transparent Red
2. Transparent Green	2. Transparent Green	2. Transparent Green
3. Transparent Amber	3. Transparent Amber	3. Transparent Amber
4. Clear	4. Clear	4. Clear
5. Translucent White	5. Translucent White	5. Translucent White
Z. No Lens	Z. No Lens	Z. No Lens

* Use with neon lamps

Stop Here for lighted switches without legends. The switch you have specified will be supplied with a rocker button with lenses, but without legends.
Example: K3AAIFNH-44

Note

It is not recommended to use green LEDs with translucent white lenses. This will reduce light intensity.

Position "A"	Legend Style	Position "C"
List "ZZ" in each position for no legend		
Refer to Legend Table for Legend Codes.		

Position "A"	Legend Color	Position "C"	Legend Rotation
1. Red	1. Red	1. Red	1. Standard
2. Black	2. Black	2. Black	2. 90°
9. White	9. White	9. White	3. 180°
B. Backlit/Daylight White	B. Backlit/Daylight White	B. Backlit/Daylight White	4. 270°
D. Backlit/Deadfront	D. Backlit/Deadfront	D. Backlit/Deadfront	
Z. No Legend	Z. No Legend	Z. No Legend	

Connector: Part Number 801775-2A without latches.
Part Number 801775-2B with latches.
Part Number 807037.

Panel Seal Gasket:
Order separately for use with switches without drain holes.

Panel Plug: Part Number K300000040.