

#### INTRODUCTION:

Adam Tech Right Angle .318" footprint PCB D-Sub connectors are a popular interface for many I/O applications. Offered in 9, 15, 25 and 37 positions they are a good choice for a low cost industry standard connection. These connectors are manufactured with precision stamped contacts offering a choice of contact plating and a wide selection of mating and mounting options.

#### FEATURES:

Industry standard compatibility  
Durable metal shell design  
Precision formed contacts  
Variety of Mating and mounting options

#### MATING CONNECTORS:

Adam Tech D-Subminiatures and all industry standard D-Subminiature connectors.

#### SPECIFICATIONS:

##### Material:

Standard insulator: PBT, 30% glass reinforced, rated UL94V-0  
Optional Hi-Temp insulator: Nylon 6T  
Insulator color: Black  
Contacts: Phosphor Bronze  
Shell: Steel, Tin or Zinc plated  
Hardware: Brass, Nickel plated

##### Contact Plating:

Gold Flash (15 and 30 µin Optional) over Nickel underplate on mating area. Tin over copper underplate on PCB tails.

##### Electrical:

Operating voltage: 250V AC / DC max.  
Current rating: 5 Amps max.  
Contact resistance: 20 mΩ max. initial  
Insulation resistance: 5000 MΩ min.  
Dielectric withstanding voltage: 1000V AC for 1 minute

##### Mechanical:

Insertion force: 0.75 lbs max  
Extraction force: 0.44 lbs min

##### Temperature Rating:

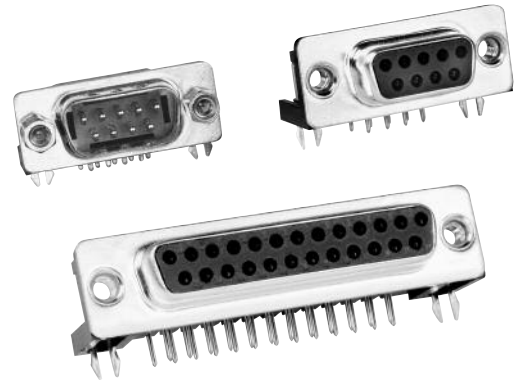
Operating temperature: -65°C to +125°C  
Soldering process temperature:  
Standard insulator: 235°C  
Hi-Temp insulator: 260°C

#### PACKAGING:

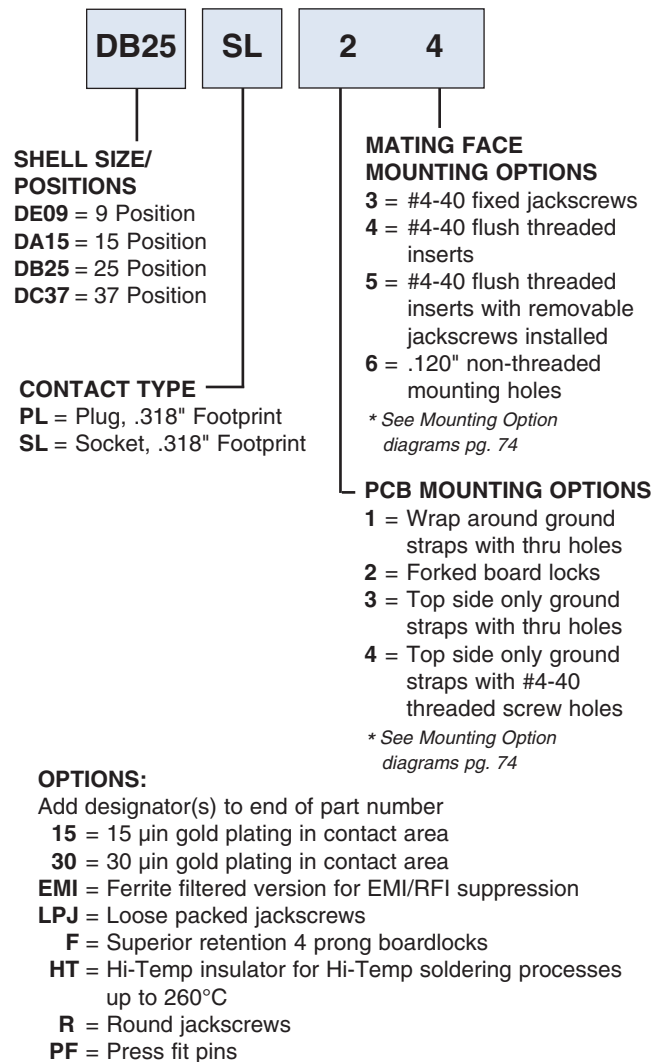
Anti-ESD plastic trays

#### APPROVALS AND CERTIFICATIONS:

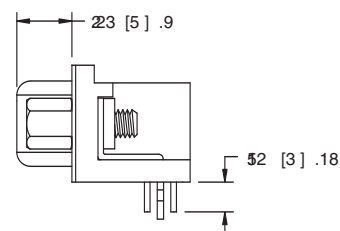
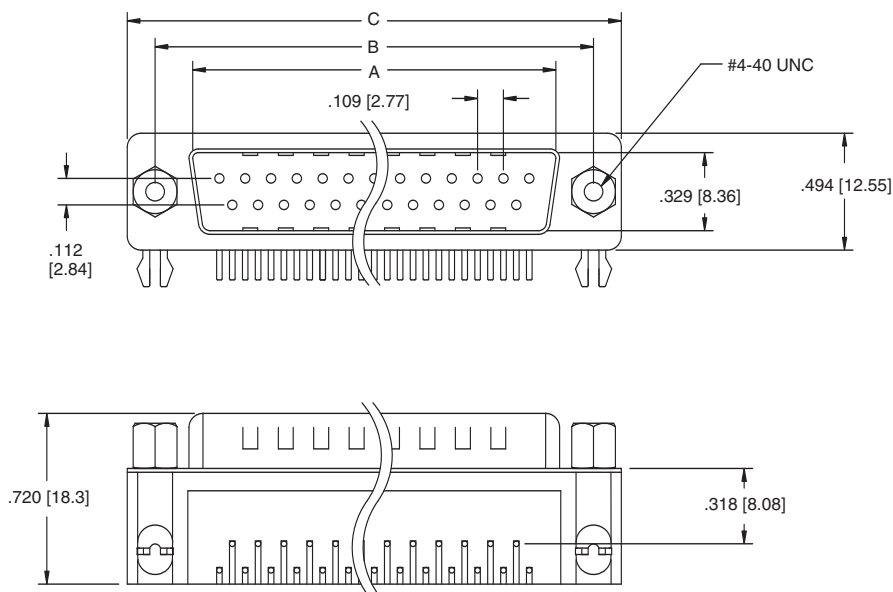
UL Recognized File No. E224053  
CSA Certified File No. LR1578596



#### ORDERING INFORMATION

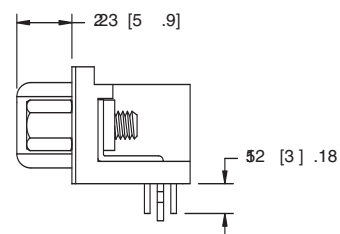
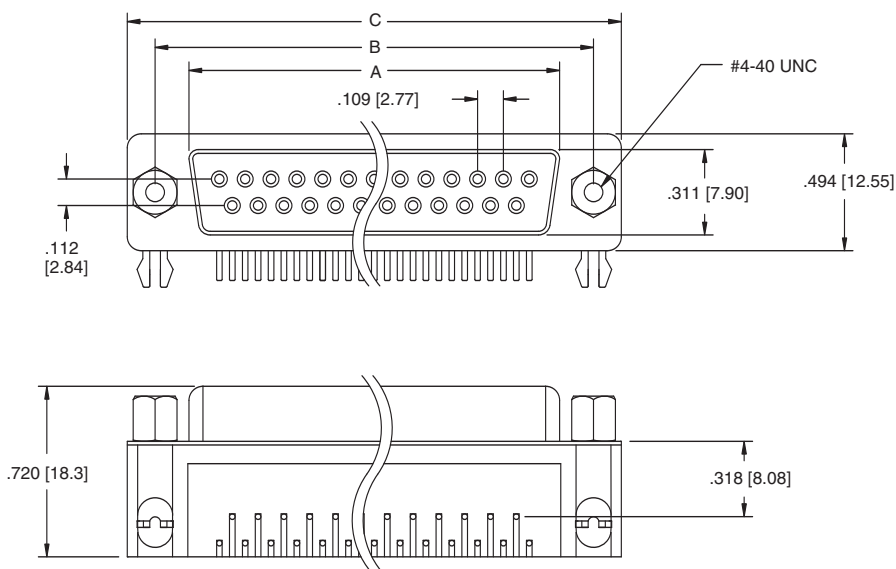


#### PLUG



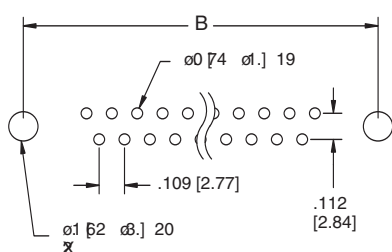
DB25-PL-25

#### SOCKET

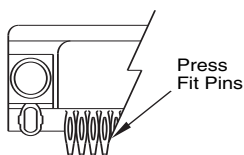


DB25-SL-24

Unit: Inch [mm]



Recommended PCB Layout



Press Fit Option

Pos.	PLUG	SOCKET	DIMENSIONS	
	A	A	B	C
9	.666 [16.92]	.643 [16.33]	.984 [24.99]	1.213 [30.81]
15	.994 [25.25]	.971 [24.66]	1.312 [33.32]	1.541 [39.14]
25	1.534 [38.96]	1.511 [38.38]	1.852 [47.04]	2.088 [53.04]
37	2.182 [55.43]	2.159 [54.84]	2.500 [63.50]	2.729 [69.32]

### MATING FACE & PCB MOUNTING OPTIONS

<p><b>OPTION 13</b></p>	<p><b>OPTION 14</b></p>	<p><b>OPTION 15</b></p>
<p><b>OPTION 16</b></p>	<p><b>OPTION 23</b></p> <p><i>* Standard Stocked Item</i></p>	<p><b>OPTION 23-R OPTION 27</b></p>
<p><b>OPTION 24</b></p> <p><i>* Standard Stocked Item</i></p>	<p><b>OPTION 24-F</b></p>	<p><b>OPTION 25</b></p> <p><i>* Standard Stocked Item</i></p>
<p><b>OPTION 26</b></p>	<p><b>OPTION 33</b></p>	<p><b>OPTION 34</b></p>
<p><b>OPTION 35</b></p>	<p><b>OPTION 36</b></p>	<p><b>OPTION 43</b></p>
<p><b>OPTION 44</b></p>	<p><b>OPTION 45</b></p>	<p><b>OPTION 46</b></p>