

# High performance EMC/EMI filter

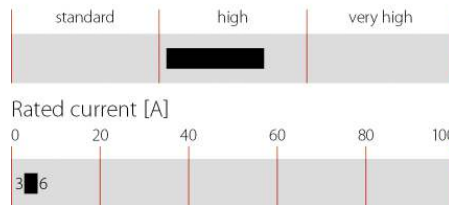


- Rated currents from 3 to 6 A
- Exceptional differential and common-mode attenuation
- UL-rated materials
- Optional medical versions (B type)



## Performance indicators

Attenuation performance



## Technical specifications

<b>Maximum continuous operating voltage</b>	250 VAC, 50/60 Hz
<b>Operating frequency</b>	dc to 400 Hz
<b>Rated currents</b>	3 to 6 A @ 40 °C max.
<b>High potential test voltage</b>	P → PE 2000 VAC for 2 sec P → N 1100 VDC for 2 sec
<b>Temperature range (operation and storage)</b>	-25 °C to +100 °C (25/100/21)
<b>Flammability corresponding to</b>	UL 94 V-2 or better
<b>Design corresponding to</b>	UL 1283, CSA 22.2 No. 8 1986, IEC/EN 60939
<b>MTBF @ 40°C/230V (Mil-HB-217F)</b>	2,400,000 hours

## Approvals



## Features and benefits

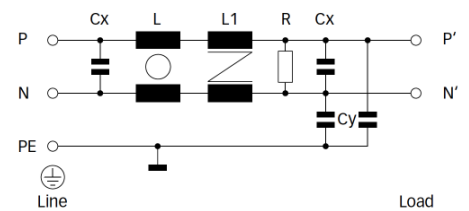
- FN 2360 filters are designed for easy and fast chassis mounting
- FN 2010 filters have a perfect performance/size ratio
- All filters provide a very high differential and common-mode attenuation performance, based on chokes with high saturation resistance and excellent thermal behavior
- Faston terminal connection with additional spade solder possibility
- Optional medical versions (B type)
- Custom-specific versions on request

## Typical applications

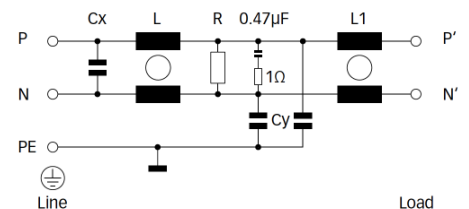
- Electrical and electronic equipment
- Consumer goods
- Medical equipment
- Power supplies
- Office automation equipment
- Datacom equipment

## Typical electrical schematic

### 3A types



### 6A types



Filter selection table

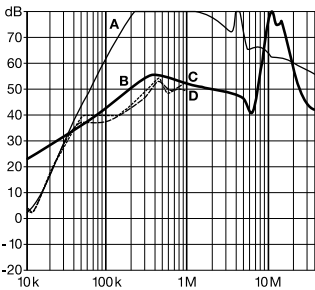
Filter	Rated current	Leakage current*	Inductance		Capacitance		Resistance	Input/Output connections	Weight
	@ 40 °C (25 °C)	@ 230 VAC/50 Hz	L	L1	Cx	Cy	R		
	[A]	[mA]	[mH]	[mH]	[μF]	[nF]	[MΩ]		[g]
FN 2360W-3-06	3 (3.35)	0.52	32.3	0.4	0.47	3	1	-06	300
FN 2360X-6-06	6 (6.7)	0.7	48.2	1.7	1.5	4	1	-06	500
FN 2360B-3-06	3 (3.35)	0.004	32.3	0.4	0.47		1	-06	300
FN 2360B-6-06	6 (6.7)	0.004	48.2	1.7	1.5		1	-06	500

\* Maximum leakage under normal operating conditions. Note: if the neutral line is interrupted, worst case leakage could reach twice this level.

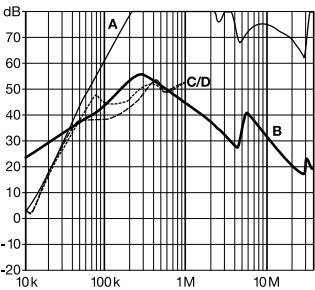
Typical filter attenuation

Per CISPR 17; A = 50 Ω/50 Ω sym; B = 50 Ω/50 Ω asym; C = 0.1 Ω/100 Ω sym; D = 100 Ω/0.1 Ω sym

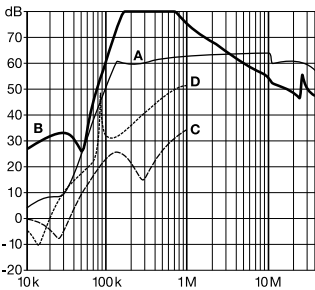
3 A types (W types)



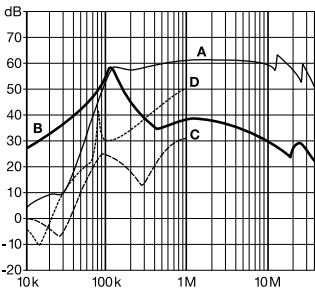
3 A types (B types)



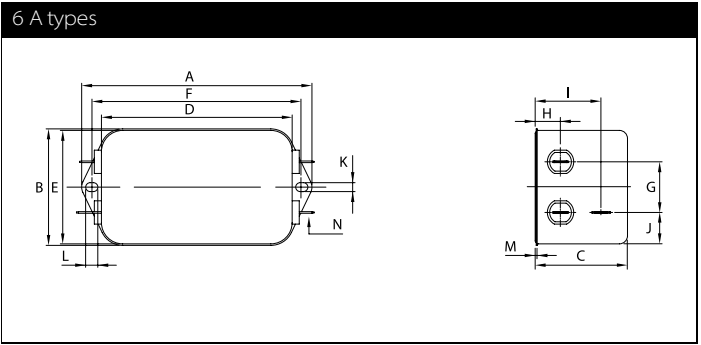
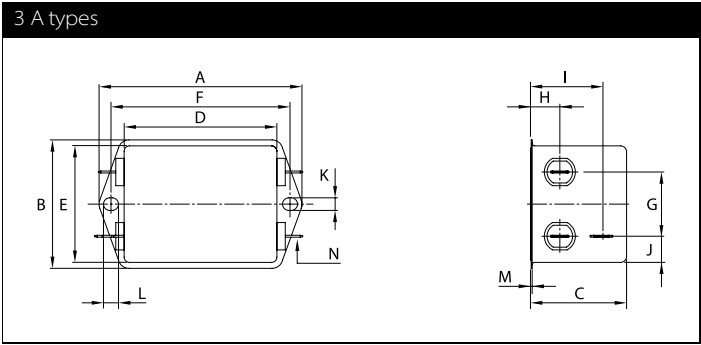
6 A types (X types)



6 A types (B types)



Mechanical data



Dimensions

	3 A	6 A	Tolerances
A	85 ±0.5	113.5 ±1	
B	54 ±0.5	57.5 ±1	
C	40.3 ±0.5	45.5 ±1	
D	64 ±0.5	94 ±1	
E	49.8	56	±0.5
F	75	103.5	±0.3
G	27	25	±0.2
H	12.3	12.4	±0.5
I	29.8	32.4	±0.5
J	11.4	15.5	±0.5
K	5.3	4.4	
L	6.3	6	
M	0.7	1	
N	6.3 x 0.8	6.3 x 0.8	

All dimensions in mm; 1 inch = 25.4 mm  
Tolerances according: ISO 2768-m / EN 22768-m