

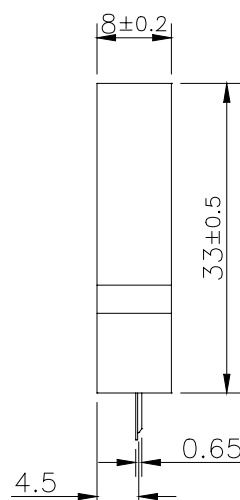
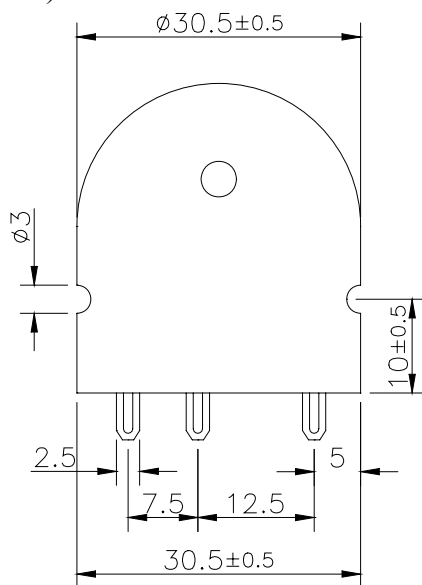
**Sales Outline Drawing**

Revision

**A****Specifications:**

Resonant Frequency (Hz)	2800 $\pm$ 500
Operating Voltage (Vdc/max)	3 ~ 28
Rated Voltage (Vdc)	12
Current Consumption (mA/max)	10 at Rated Voltage
Sound Pressure Level (dB/min)	85 at 30cm at Rated voltage
Operating Temperature (°C)	-20 ~ +90
Storage Temperature (°C)	-30 ~ +100
Housing	ABS 777D UL94HB plastic resin (Color: Black)
Lead Pins	Tin Plated Brass
Weight (Grams)	5.4
Condition by wave soldering (°C)	245 $\pm$ 5 / 3 $\pm$ 0.5 sec
Condition by hand soldering (°C)	350 $\pm$ 20 / within 5 sec
Options	For other options contact factory

PS: Vp-p = 1/2duty, square wave

**RoHS Compliant****Dimensions:** (units: mm)**Recommended Driving Circuit**