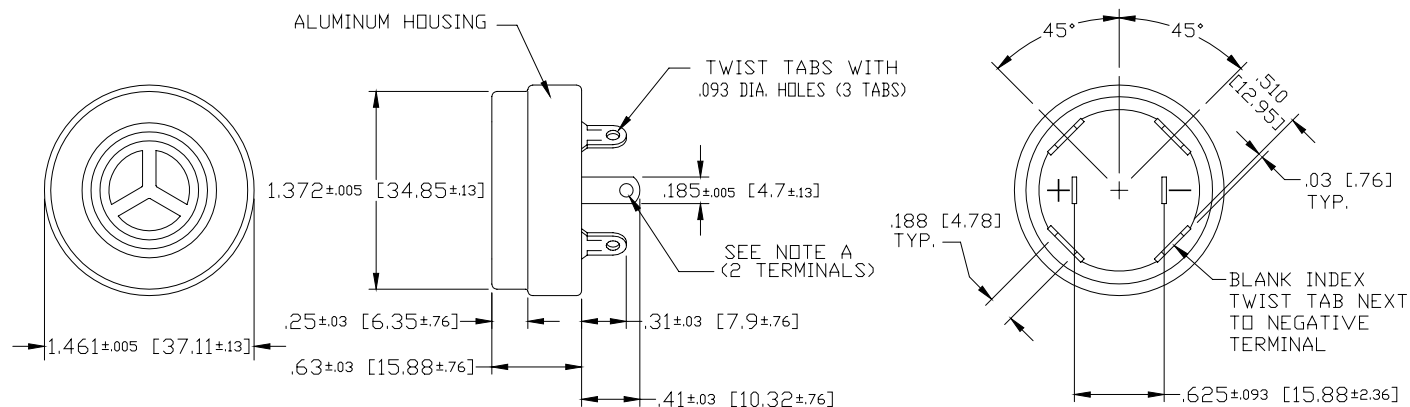


# Sales Outline Drawing

Obsolete- No Direct Replacement. Substitutes include: SBM428, SC416, MSR320  
**specifications:**

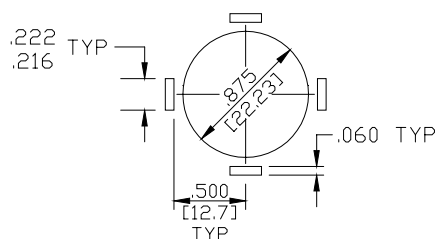
Sound level Category	Low Sound Level
Mode of Operation	Continuous
Mounting	Panel (see note B)
Voltage Rating	4 - 8 Vdc
Frequency	3500 Hz $\pm$ 500 Hz
Loudness (Min. Voltage)	64 dB(A) min. @ 2 FT and 4 Vdc
Loudness (Max Voltage)	70 dB(A) min. @ 2FT and 8 Vdc
Current Draw	10 mA Max @ 4 Vdc
Current Draw	20 mA Max @ 8 Vdc
Storage Temperature	-40°C to +85°C
Operating Temperature	-30°C to +65°C
Weight (Typical)	0.6 oz (17 g)
Housing	Clear Aluminum
Options	For other options contact factory

**Dimensions:** Inches (mm)



NOTE A:  
TERMINALS - .032 STEEL, TIN PLATED WITH .093 DIA. WIRE HOLE, WILL ACCEPT STANDARD 3/16" QUICK CONNECT

NOTE B:  
MOUNTING - CHASSIS CUT-OUT FOR DIRECT MOUNTING - FOUR TWIST TABS PER EIA STD RS395 ARE PROVIDED. TERMINALS ARE ELECTRICALLY ISOLATED FROM CASE AND TWIST TABS.



# Mouser Electronics

Authorized Distributor

Click to View Pricing, Inventory, Delivery & Lifecycle Information:

[Mallory Sonalert:](#)

[SC6](#)