

## 20 dB, Bi-Directional Coupler, 1 - 1000 MHz

Rev. V3

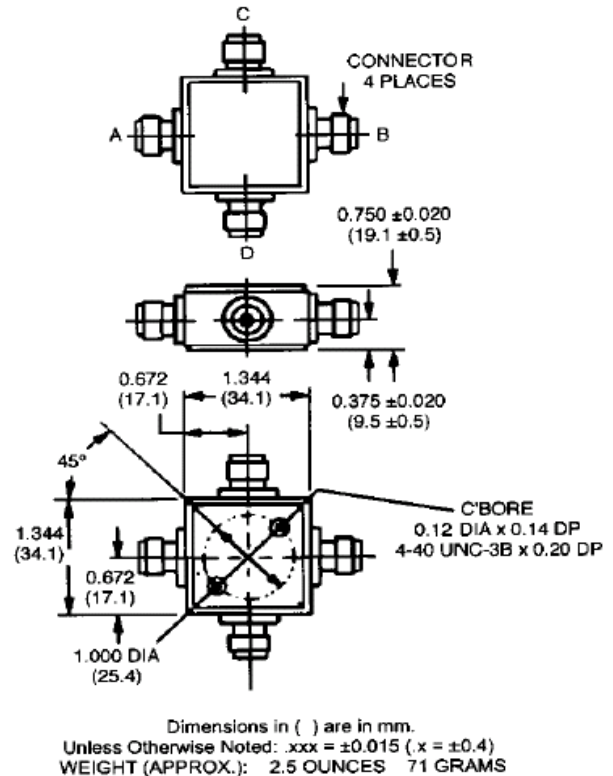
### Features

- Broad Frequency Range
- Constant Coupling—Within  $\pm 0.5$  dB Max
- VSWR: 1.3:1 Max
- 

### C-8

### Description

Bi-Directional Couplers offer the ability to couple the power in two directions while maintaining directivity.



### Electrical Specifications<sup>1</sup>: $T_A = -55^\circ\text{C}$ to $+85^\circ\text{C}$

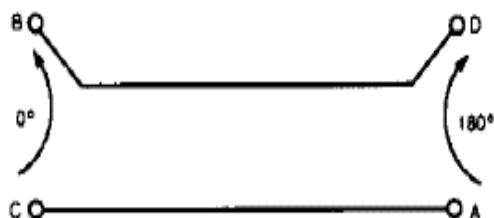
Parameter	Test Conditions	Frequency	Units	Min	Typ	Max
Coupling	Input to Output	1-1000 MHz	dB	19.0	20.0	21.0
Coupling Flatness	—	10 - 500 MHz 1 - 1000 MHz	dB dB	— —	— —	$\pm 0.25$ $\pm 0.5$
VSWR	All Ports	10 - 500 MHz 1 - 1000 MHz	Ratio Ratio	— —	— —	1.2:1 1.3:1
Directivity	Both Directions	10 - 500 MHz 1 - 1000 MHz	dB dB	25 20	— —	— —
Main Line Loss <sup>2</sup>	—	10 - 500 MHz 1 - 1000 MHz	dB dB	— —	— —	0.5 0.7

1. All specifications apply with 50 ohm source and load impedance.

2. Includes theoretical power split.

This product contains elements protected by United States Patent number 3,426,298.

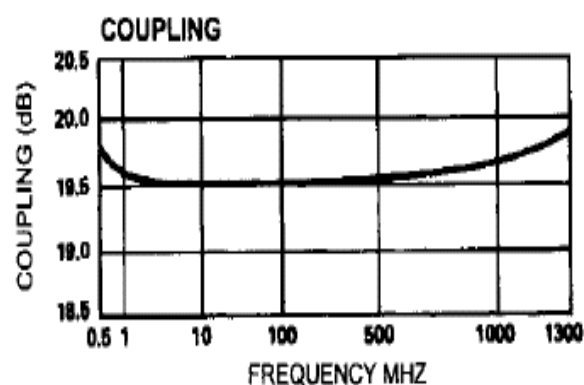
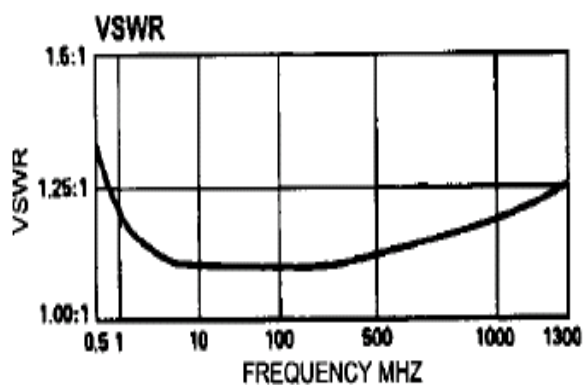
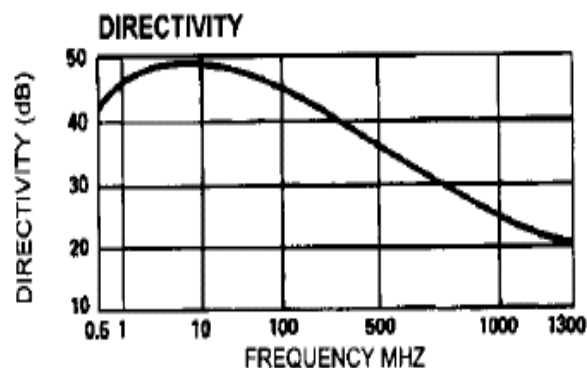
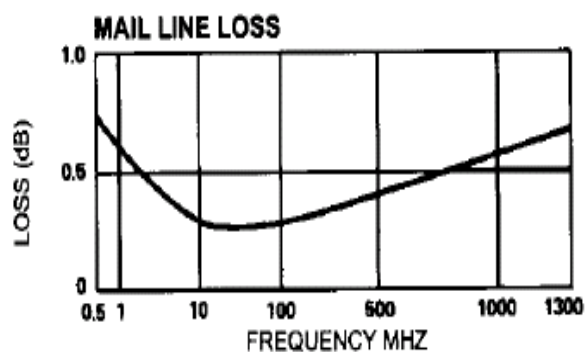
## Functional Diagram



## Ordering Information

Part Number	Package
CH-132 BNC	Connectorized
CH-132 N	Connectorized
CH-132 SMA	Connectorized
CH-132 TNC	Connectorized

## Typical Performance Curves



# Mouser Electronics

Authorized Distributor

Click to View Pricing, Inventory, Delivery & Lifecycle Information:

[MACOM:](#)

[CH-132-BNC](#) [CH-132-N](#) [CH-132-SMA](#) [CH-132-TNC](#)