
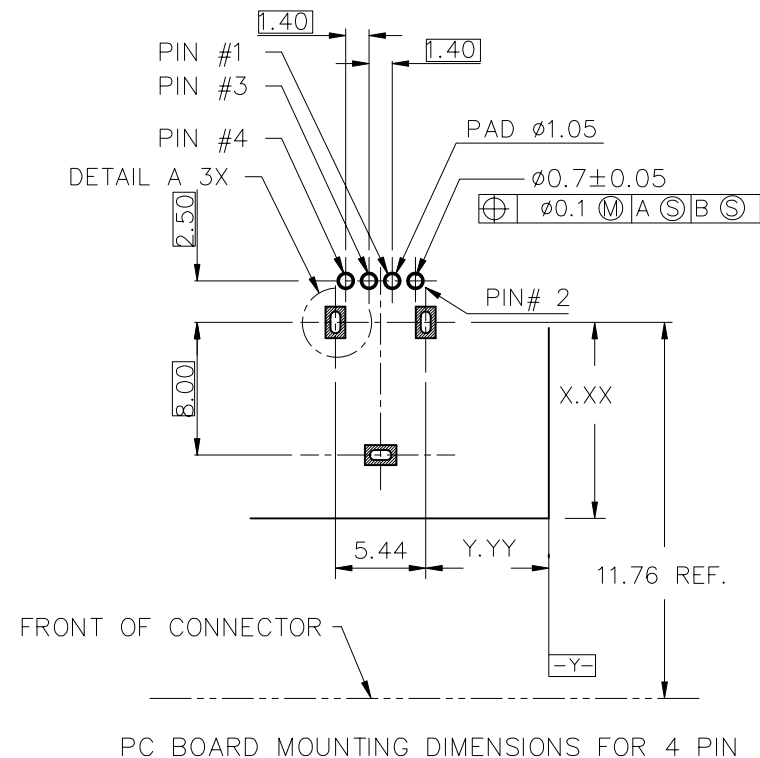
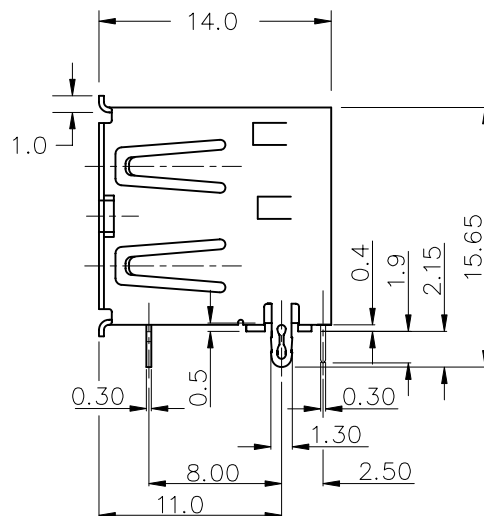
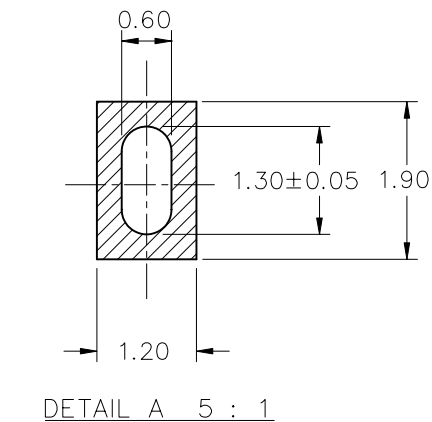
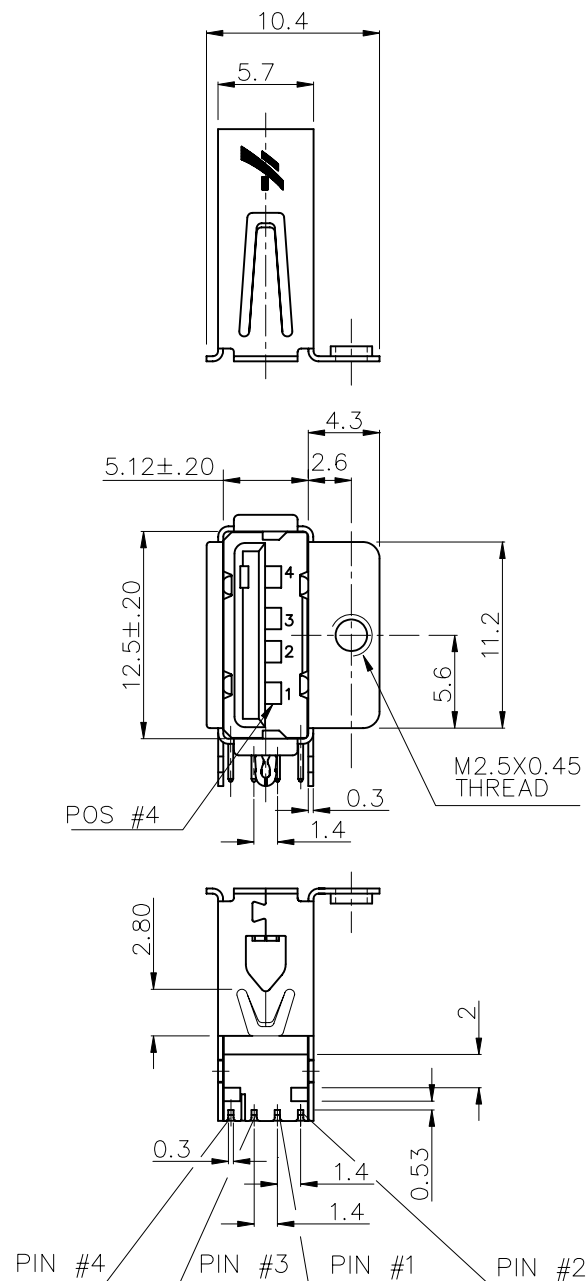



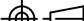
Tous droits strictement reserves. Reproduction ou communication a des tiers int
sous quelque forme que ce soit sans autorisation ecrite du proprietaire.
Droits de c BERG ELECTRONICS
A _____
Droits de reproduction BERG ELECTRONICS by

401

All rights strictly reserved. Reproduction or issue to third parties in any form whatsoever is not permitted without written authority from the proprietor.
Property of c BERG ELECTRONICS.
Copyright BERG ELECTRONICS by 

D



mat'l code					tolerance unless otherwise specified			CUSTOMER COPY		 www.fciconnect.com		
rev.	ecn	no.	dr	date	linear	.0 ± .30			projection 	title USB SIDE MOUNT WITH RIGHT SIDE FLANGE		
A	T10144	PP	05/21/01			.00 ± .20						
B	T20160	WL	05/17/02		angles	.000± 0.10						
C	T20219	WL	07/11/02			± 2°						
D	T03-0122	WL	4/16/03	dr	PETER	04/12/01			unit mm/inch	product family USB		code
E	T04-0196	WL	05/05/04	engr	R Y LIU	04/12/01				scale	size	
F	N04-0061	PH	10/07/04	chr	R Y LIU	04/12/01			A3			57423
				appd	JENN TSAO	04/12/01						
sheet	revision	F	F									
index	sheet	1	2									

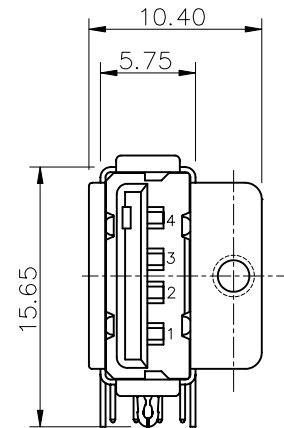
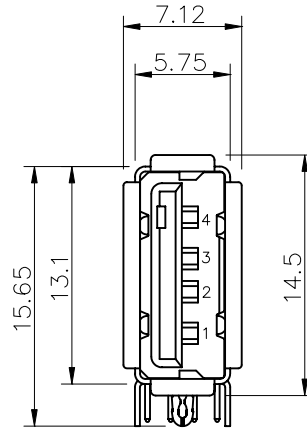
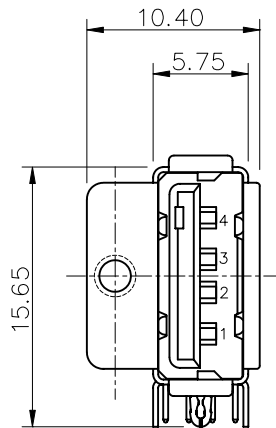
Tous droits strictement réservés. Reproduction ou communication à des tiers int
sous quelque forme que ce soit sans autorisation écrite du propriétaire.
Property of c BERG ELECTRONICS.
Droits de reproduction BERG ELECTRONICS by

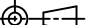
A
FCI

All rights strictly reserved. Reproduction or issue to third parties in any for
whichever is not permitted without written authority from the proprietor.
Property of c BERG ELECTRONICS.
Copyright BERG ELECTRONICS by

D

1	2	3	4	5	6
PRODUCT NO.					
57423					
PRODUCT NUMBER CODE					
57423-X 0 X 0 B LF					
HOUSING COLOR OPTION					
0-WHITE					
1-BLACK					
SHIELD PLATING OPTION					
1- NICKEL ONLY WITH RIGHT SCREW TYPE 1					
2- TIN COPPER ALLOY WITHOUT SCREW TYPE 2					
3- TIN COPPER ALLOY WITH RIGHT SCREW TYPE 1					
4- TIN COPPER ALLOY WITH LEFT SCREW TYPE 3					
TERMINAL PLATING OPTION					
0-50u" NI UNDERPLATE					
30u" Au CONTACT AREA					
100u" TIN/LEAD TAIL AREA IF NO "LF" MARK					
100u" MATTE TIN TAIL AREA IF WITH "LF" MARK					
LEAD FREE MARK					
SEE TERMINAL PLATING MARK					
NOTES :					
1. MATERIAL:					
CONTACTS: COPPER ALLOY					
SHIELD: COPPER ALLOY					
HOUSING: UL 94V-0 THERMOPLASTIC, COLOR: SEE PRODUCT CODE					
2. PLATING: CONTACTS: GOLD FLASH OVER					
PALLADIUM NICKEL (0.76um MINIMUM) IN CONTACT					
AREA: 2.5 um TIN-LEAD OR TIN MINIMUM IN SOLDER TAIL AREA.					
1.27 um MINIMUM NICKEL UNDERPLATE OVER					
ALL SURFACES. SEE PRODUCT NUMBER CODE					
SHIELD: SEE PRODUCT NUMBER CODE.					
③ DATUMS & BASIC DIMENSIONS TO BE DETERMINED BY CUSTOMER					
4. RECOMMENDED BOARD THICKNESS IS 1.20mm.					
⑤ MAXIMUM PANEL THICKNESS TO BE 2.67mm IF MOUNTED BEHIND PANEL					
6. METAL SHELL SLIVER 0.20 MAX.					
7. ALL COMPONENT PARTS ARE FOLLOWING SONY SS-00259.					
8. IF LEAD FREE P/N, GS-14-920 SHOULD BE APPLIED					
9. If lead free p/n, the housing will withstand exposure to 260° peak temperature for 40 seconds in a convection, infra-red or vapor phase reflow oven					
10. If lead free p/n, the product meets the requirements of the European Union Directive of Restrictions for Hazardous Substances (Directive 2002/95/EC) and can be processed in the process conditions for which the product is developed. FCI, its subsidiaries and affiliates ("FCI") provides the above data and information in good faith based upon current knowledge and experience, but makes no warranty that such data or information is free from error, is complete or is sufficient for user's intended purpose EVEN IF MADE KNOWN TO FCI. FCI specifically disclaims any warranty, express or implied, and assumes no liability with respect to the effectiveness or safety of the products listed above. Each user must make its own determination as to the suitability of FCI's products and materials for its own particular purposes, and must assure that its products fabricated from FCI's products and materials are safe and lawful. It is the user's responsibility to assure proper use and disposal of FCI's products and materials, the safety and health of user's employees and customers, and user's compliance with applicable laws and regulations					
WITH LEFT SCREW TYPE '3'					
WITHOUT SCREW TYPE '2'					
WITH RIGHT SCREW TYPE '1'					
A					
B					
C					
D					



mat'l code					tolerance unless otherwise specified			CUSTOMER COPY		<div><div>A</div><div>FCI</div></div> <div>www.fciconnect.com</div>	
rev.	ecn	no.	dr	date	linear	.0 ±.30		projection 	title USB SIDE MOUNT WITH SIDE FLANGE		
F				.00 ±.20							
				.000±0.10							
					angles	± 2°					
				dr	PETER	04/12/01	unit	product family		USB	code
				enr	R Y LIU	04/12/01	mm/inch	size		dwg no.	sheet 2 OF
				chr	R Y LIU	04/12/01	scale	A3		57423	
				appd	JENN TSAO	04/12/01					
sheet	revision										
index	sheet										