

△ REDRAWING

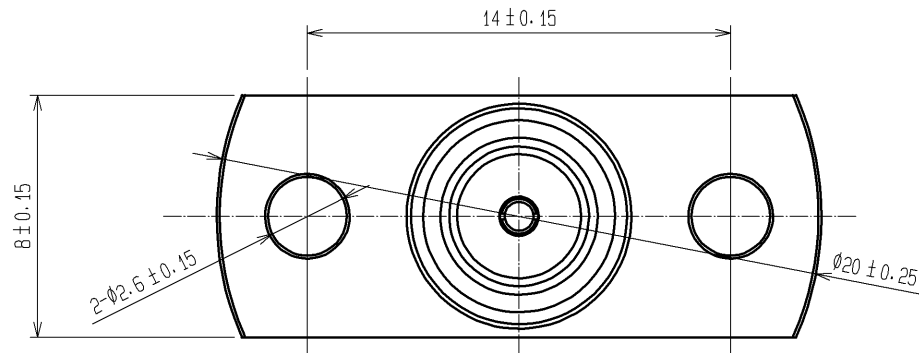


figure 1 (2:1)

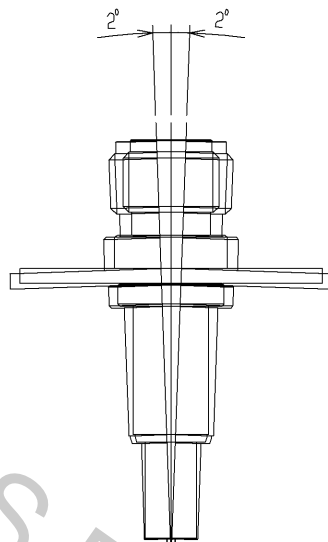
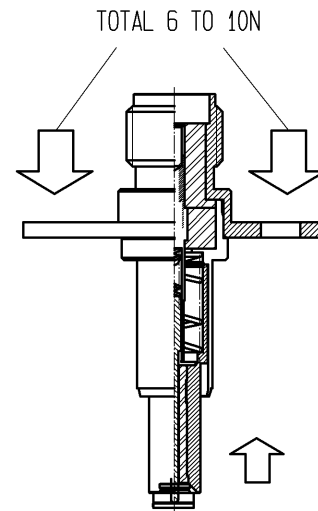
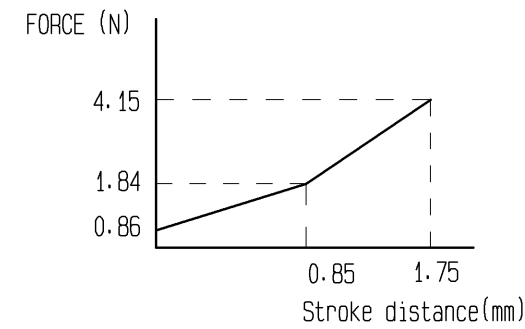


figure 2 (2:1)



MS-156-HRMJ-3 CONTACT PRESSURE



△ 3 DETAILED DRAWING (5:1)

figure 3:NO EJECTION OF MALE CONTACT

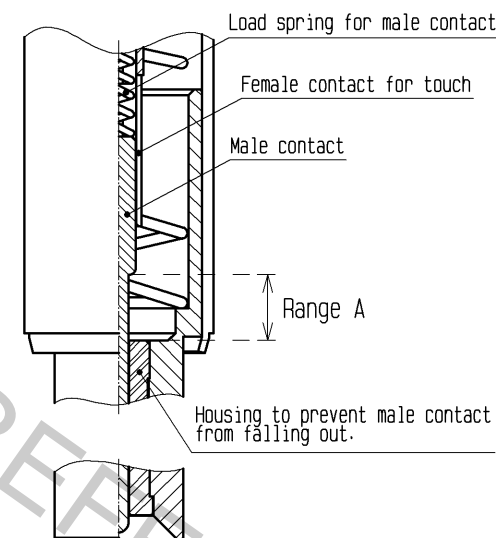
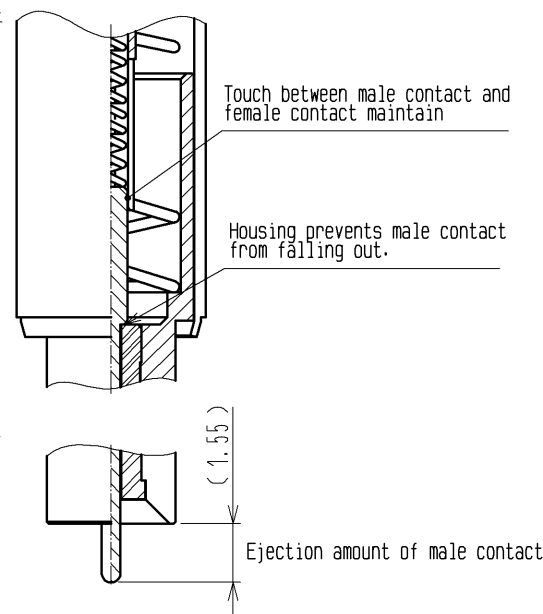
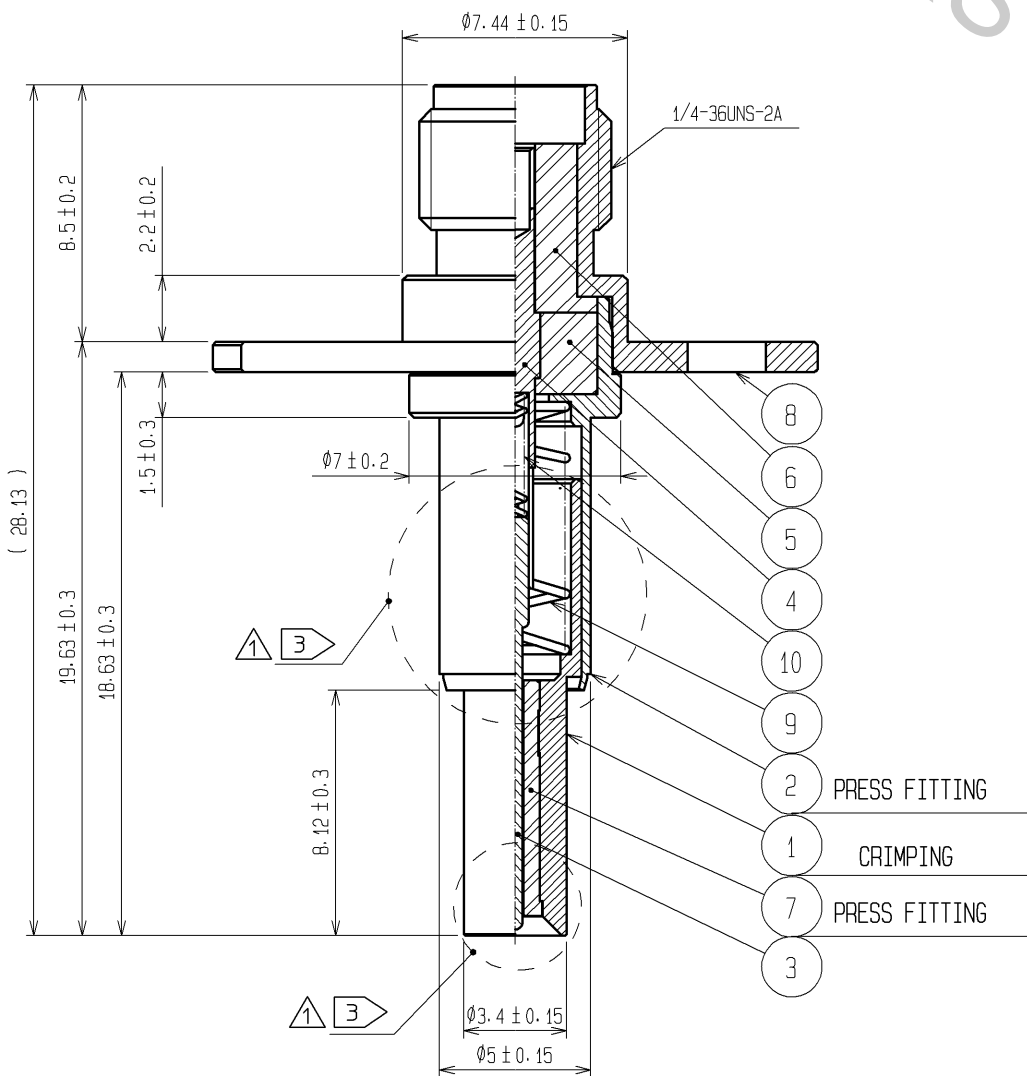


figure 4:MAX EJECTION OF MALE CONTACT



△ 3 Even in unused condition, THE Male CONTACT may move within range A and thus may become exposed like figure 4 when delivered. However this is not a defect. If THE Male CONTACT is exposed, please vertically push THE Male CONTACT into THE position of figure 3 before using.



MATED CONDITION

△ NOTE 1. This adaptor must be pushed on the receptacle (MS-156 series) with 6 to 10N. (refer to figure 2)
2. Mating angle must be less than ±2 degree. (refer to figure 1)

5	PTFE		10	STAINLESS	GOLD PLATING
4	BERYLLIUM COPPER	GOLD PLATING	9	STAINLESS	
3	BERYLLIUM COPPER	GOLD PLATING	8	STAINLESS	PASSIVATE
2	BERYLLIUM COPPER	GOLD PLATING	7	PTFE	
1	BERYLLIUM COPPER	GOLD PLATING	6	PTFE	
NO.	MATERIAL	FINISH . REMARKS	NO.	MATERIAL	FINISH . REMARKS
UNITS mm		SCALE 4 : 1	COUNT 6	DESCRIPTION OF REVISIONS DIS-D-002553	DESIGNED RO. FURUYAMA
HIROSE ELECTRIC CO., LTD.		APPROVED : KJ. KAWAMURA	05.01.05	DRAWING NO. EDC3-180281-00	CHECKED NK. NINOMIYA
		CHECKED : RZ. KANO	05.01.05	PART NO. MS-156-HRMJ-3	DATE 12.09.10
		DESIGNED : KH. HIDA	05.01.05	CODE NO. CL358-0171-5-00	
		DRAWN : KH. HIDA	05.01.05		