

TDC1007

Use TDC1048, TDC1038, TDC1058,
TMC1175 for New Designs



Monolithic Video A/D Converter

8-Bit, 20MSPs

The TDC1007 is an 8-bit fully parallel (flash) analog-to-digital converter, capable of digitizing an input signal at rates up to 20MSPs (MegaSamples Per Second). It will operate accurately without the use of an external sample-and-hold amplifier, with analog input signals having frequency components up to 7MHz.

A single CONvERT (CONV) signal controls the conversion operation of the device which consists of 255 sampling comparators, encoding logic, and a latched output buffer register. The device will recover from a full-scale input step in 20ns. Control inputs are provided to format the output in binary, two's complement, or inverse data coding formats.

The TDC1007 is patented under U.S. Patent No. 3283170 with other patents pending.

Features

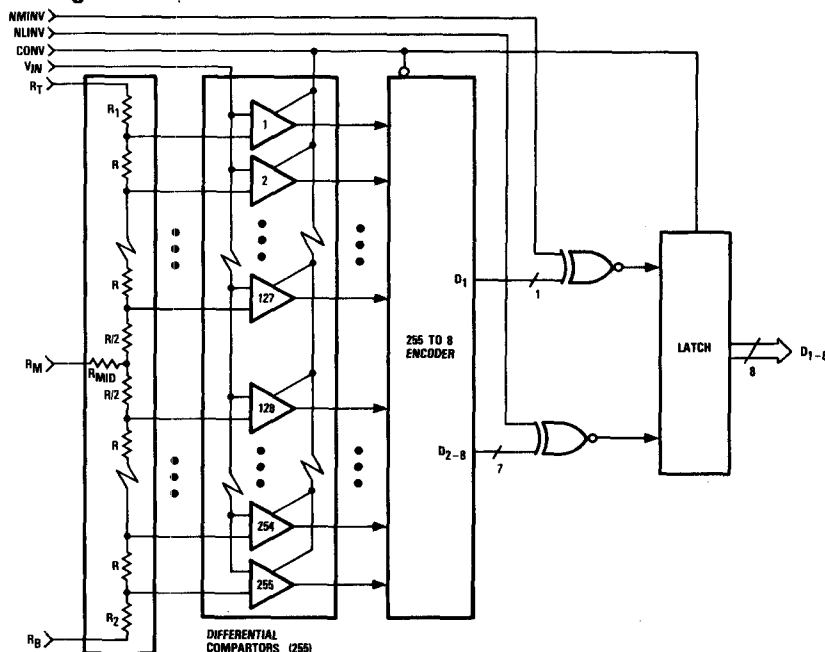
- 8-Bit Resolution
- Conversion Rates Up To 20MSPs
- Sample-And-Hold Amplifier Not Required
- Bipolar Monolithic Construction
- TTL Compatible Inputs And Outputs
- Binary Or Two's Complement Mode
- Differential Phase=1.0 Degree
- Differential Gain=1.7%

Applications

- Video Systems 3x Or 4x Subcarrier, NTSC Or PAL
- Radar Systems
- High-Speed Multiplexed Data Acquisition
- Digital Signal Processing

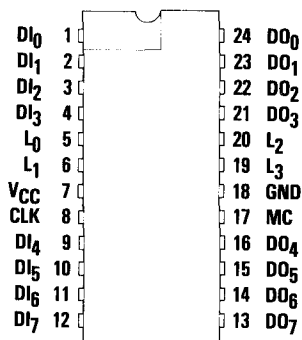
A

Functional Block Diagram

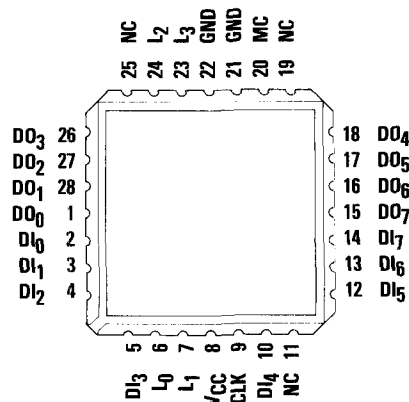


15

Pin Assignments



24 Pin DIP — J7 Package
 24 Pin CERDIP — B2 Package
 24 Pin CERDIP — B7 Package



28 Contact Chip Carrier — C3 Package

Functional Description

General Information

The TDC1011 consists of two 4-bit wide, adjustable length shift registers. These registers share control signals and a common clock.

Power

The TDC1011 operates from a single +5 Volt supply.

Inputs

The eight inputs to the TDC1011 are divided into two groups of four, and are intended to support the TDC1028, which has inputs in groups of four bits. The lengths of these two groups are different when the Mode Control (MC) is HIGH (refer to the **Controls** section). The incoming data is unchanged by the TDC1011. All inputs are fully TTL compatible and all internal circuitry is static.

Outputs

The outputs of the TDC1011 are delayed relative to the input signals. The amount of the delay is programmable (refer to the **Controls** section). The outputs remain valid

for a minimum of t_{H0} nanoseconds after the leading edge of CLK. This allows the data to be latched into circuits with non-zero hold time requirements.

Clock

The TDC1011 operates synchronously from a single master clock line, which can be clocked up to 18MHz. All operations occur at the rising edge of the master clock. Since the internal circuitry is static, the clock can be gated if desired.

Controls

The TDC1011 has four length selection controls and one mode selection control. The operation of these controls is shown in *Table 1*.

No Connect

There are several pins labeled no connect (NC) on the TDC1011 C3 Package, which have no connections to the chip. These pins should be left open.

Package Interconnections

Signal Type	Signal Name	Function	Value	J7, B2, B7 Package Pins	C3 Package Pins
Power	V _{CC}	Positive Supply Voltage	5.0V	7	8
	GND	Ground	0.0V	18	21, 22
Inputs	DI ₀₋₇	Data Input	TTL	1, 2, 3, 4, 9, 10, 11, 12	2, 3, 4, 5, 10, 12, 13, 14
Outputs	DO ₀₋₇	Data Output	TTL	24, 23, 22, 21, 16, 15, 14, 13	1, 28, 27, 26, 18, 17, 16, 15
Clock	CLK	Clock	TTL	8	9
Controls	L ₀	Length Select LSB	TTL	5	6
	L ₁	Length Select	TTL	6	7
	L ₂	Length Select	TTL	20	24
	L ₃	Length Select MSB	TTL	19	23
	MC (Mode)	Mode Control	TTL	17	20
No Connect	NC	No Connect	Open	None	11, 19, 25

Table 1. Length Programming

Input Code				Mode (MC) = 0		Mode (MC) = 1	
L ₃	L ₂	L ₁	L ₀	DO ₃₋₀ Length	DO ₇₋₄ Length	DO ₃₋₀ Length	DO ₇₋₄ Length
0	0	0	0	3	3	3	18
0	0	0	1	4	4	4	18
0	0	1	0	5	5	5	18
0	0	1	1	6	6	6	18
0	1	0	0	7	7	7	18
0	1	0	1	8	8	8	18
0	1	1	0	9	9	9	18
0	1	1	1	10	10	10	18
1	0	0	0	11	11	11	18
1	0	0	1	12	12	12	18
1	0	1	0	13	13	13	18
1	0	1	1	14	14	14	18
1	1	0	0	15	15	15	18
1	1	0	1	16	16	16	18
1	1	1	0	17	17	17	18
1	1	1	1	18	18	18	18

K

Figure 1. Timing Diagram (Preset Length Controls)

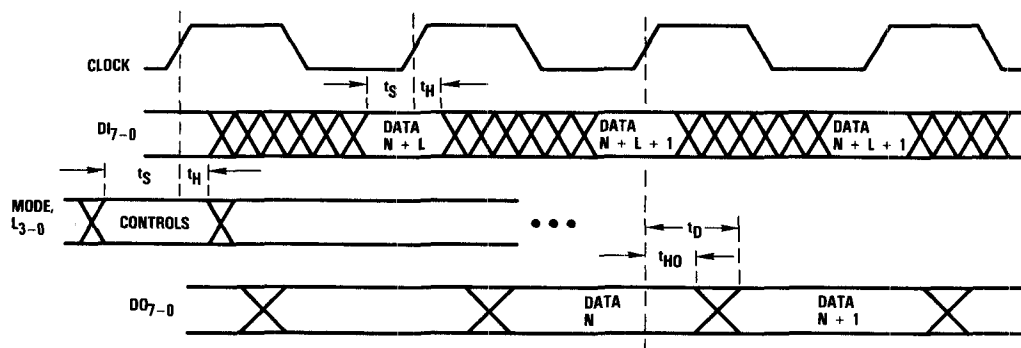


Figure 2. Length Control Operation

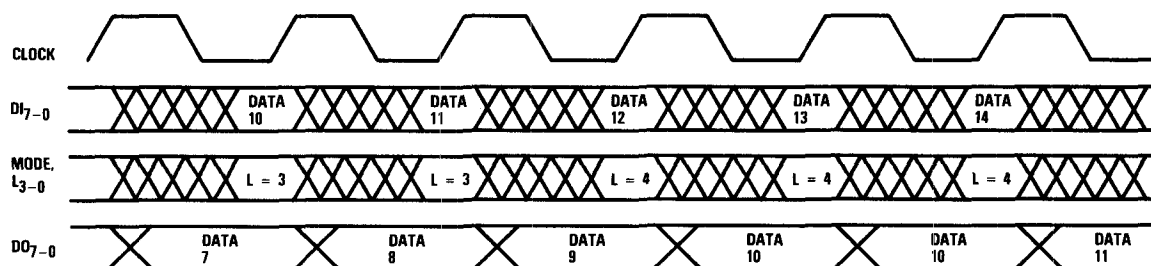


Figure 3. Equivalent Input Circuit

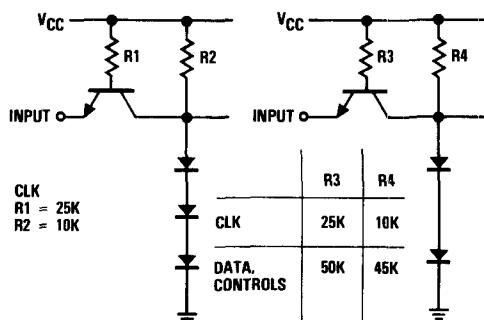


Figure 4. Equivalent Output Circuit

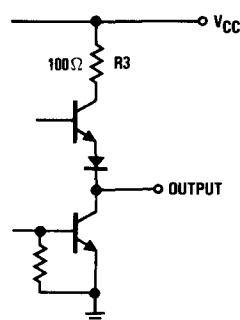
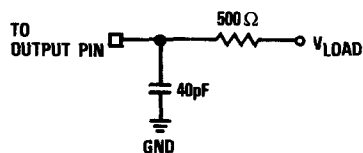


Figure 5. Test Load



Absolute maximum ratings (beyond which the device may be damaged) ¹

Supply Voltage	– 0.5 to +7.0V
Input	
Applied voltage	– 0.5 to +5.5V ²
Forced current	– 6.0 to +6.0mA ^{3,4}
Output	
Applied voltage	– 0.5 to +5.5V ²
Forced current	– 1.0 to 6.0mA ^{3,4}
Short-circuit duration (single output in HIGH state to ground)	1 Second
Temperature	
Operating, case	– 55 to +125°C
junction	175°C
Lead, soldering (10 seconds)	300°C
Storage	– 65 to +150°C

- Notes:
1. Absolute maximum ratings are limiting values applied individually while all other parameters are within specified operating conditions. Functional operation under any of these conditions is NOT implied.
 2. Applied voltage must be current limited to specified range, and measured with respect to GND.
 3. Forcing voltage must be limited to specified range.
 4. Current is specified as conventional current flowing into the device.

Operating conditions

Parameter		Temperature Range						Units
		Standard			Extended			
		Min	Nom	Max	Min	Nom	Max	
V _{CC}	Supply Voltage	4.75	5.0	5.25	4.5	5.0	5.5	V
t _{PWL}	Clock Pulse Width, LOW	15			15			ns
t _{PWH}	Clock Pulse Width, HIGH	15			15			ns
t _S	Input Setup Time	20			25			ns
t _H	Input Hold Time	0			2			ns
V _{IL}	Input Voltage, Logic LOW			0.8			0.8	V
V _{IH}	Input Voltage, Logic HIGH	2.0			2.0			V
V _{IHC}	Input Voltage, Logic HIGH, Clock	2.4			2.4			V
I _{OL}	Output Current, Logic LOW			4.0			4.0	mA
I _{OH}	Output Current, Logic HIGH			− 400			− 400	μA
T _A	Ambient Temperature, Still Air	0		70				°C
T _C	Case Temperature				− 55		125	°C



Electrical characteristics within specified operating conditions

Parameter		Test Conditions	Temperature Range				Units
			Standard		Extended		
			Min	Max	Min	Max	
I _{CC}	Supply Current	V _{CC} = Max, Static		150		200	mA
I _{IL}	Input Current, Logic LOW	V _{CC} = Max, V _I = 0.4V Data Inputs		- 0.4		- 0.4	mA
		Clock		- 1.0		- 1.0	mA
I _{IH}	Input Current, Logic HIGH	V _{CC} = Max, V _I = 2.4V		75		75	μA
I _I	Input Current, Max Input Voltage	V _{CC} = Max, V _I = 5.5V		1.0		1.0	mA
V _{OL}	Output Voltage, Logic LOW	V _{CC} = Min, I _{OL} = Max		0.5		0.5	V
V _{OH}	Output Voltage, Logic HIGH	V _{CC} = Min, I _{OH} = Max	2.4		2.4		V
I _{OS}	Short-Circuit Output Current	V _{CC} = Max, Output HIGH, one pin to ground, one second duration max.		- 40		- 40	mA
C _I	Input Capacitance	T _A = 25°C, F = 1MHz		15		15	pF
C _O	Output Capacitance	T _A = 25°C, F = 1MHz		15		15	pF

Switching characteristics within specified operating conditions

Parameter	Test Conditions	Temperature Range				Units
		Standard		Extended		
		Min	Max	Min	Max	
t _{CLK} Clock Rate	V _{CC} = Min					
	Static Length Controls	18		15		MHz
	Dynamic Length Controls	15		10		MHz
t _D Output Delay	V _{CC} = Min, Test Load: V _{LOAD} = 2.2V		25		30	ns
t _{HO} Output Hold Time ²	V _{CC} = Max, Test Load: V _{LOAD} = 2.2V	5		5		ns

Notes: 1. All transitions are measured at a 1.5V level.
2. Guaranteed, not tested.

Application Notes

The TDC1011 has two types of applications: as a support device for the TDC1028, and as a general variable-length shift register.

To support the TDC1028, the lengths will be set to one of the following:

1. Both sections 9 stages long.
2. One section 9 stages long, the other section 18 stages long.
3. Both sections 18 stages long.

The sections are interchangeable only if the lengths are identical.

Further description of the use of the TDC1011 to support the TDC1028 is given in TRW LSI Products Inc. *Application Note TP-22*.

For general use, it is important to note that the length control inputs are registered. There are no constraints on the use of the control leads other than the operational requirements shown in the *Operating Conditions Table*. Specifically, the length can be increased from one clock period to another and proper operation will occur; no data is lost, except the eighteenth stage.

Ordering Information

Product Number	Temperature Range	Screening	Package	Package Marking
TDC1011B2C	STD - $T_A = 0^{\circ}\text{C}$ to 70°C	Commercial	24 Pin Cerdip ¹	1011B2C
TDC1011B2A	EXT - $T_C = -55^{\circ}\text{C}$ to 125°C	High Reliability	24 Pin Cerdip ¹	1011B2A
TDC1011B7C	STD - $T_A = 0^{\circ}\text{C}$ to 70°C	Commercial	24 Pin Cerdip ²	1011B7C
TDC1011B7A	EXT - $T_C = -55^{\circ}\text{C}$ to 125°C	High Reliability	24 Pin Cerdip ²	1011B7A
TDC1011C3C	STD - $T_A = 0^{\circ}\text{C}$ to 70°C	Commercial	28 Contact Hermetic Ceramic Chip Carrier	1011C3C
TDC1011C3A	EXT - $T_C = -55^{\circ}\text{C}$ to 125°C	High Reliability	28 Contact Hermetic Ceramic Chip Carrier	1011C3A
TDC1011J7C	STD - $T_A = 0^{\circ}\text{C}$ to 70°C	Commercial	24 Pin Hermetic Ceramic DIP	1011J7C
TDC1011J7A	EXT - $T_C = -55^{\circ}\text{C}$ to 125°C	High Reliability	24 Pin Hermetic Ceramic DIP	1011J7A

Notes: 1. 0.3 inches wide.
2. 0.6 inches wide.

All parameters in this specification are guaranteed by design, characterization, sample testing or 100% testing, as appropriate. TRW reserves the right to change products and specifications without notice. This information does not convey any license under patent rights of TRW Inc. or others.

Life Support Policy — TRW LSI Products Inc. components are not designed for use in life support applications, wherein a failure or malfunction of the component can reasonably be expected to result in personal injury. The user of TRW LSI Products Inc. components in life support applications assumes all risk of such use and indemnifies TRW LSI Products Inc. against all damages.

