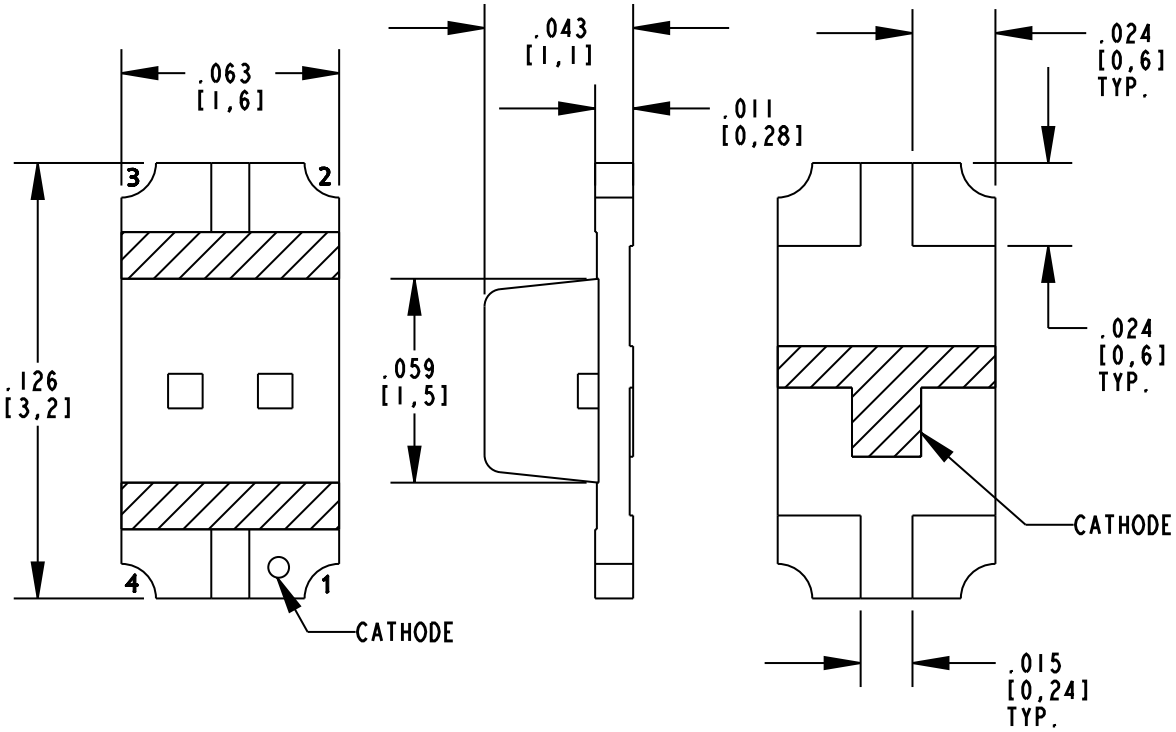
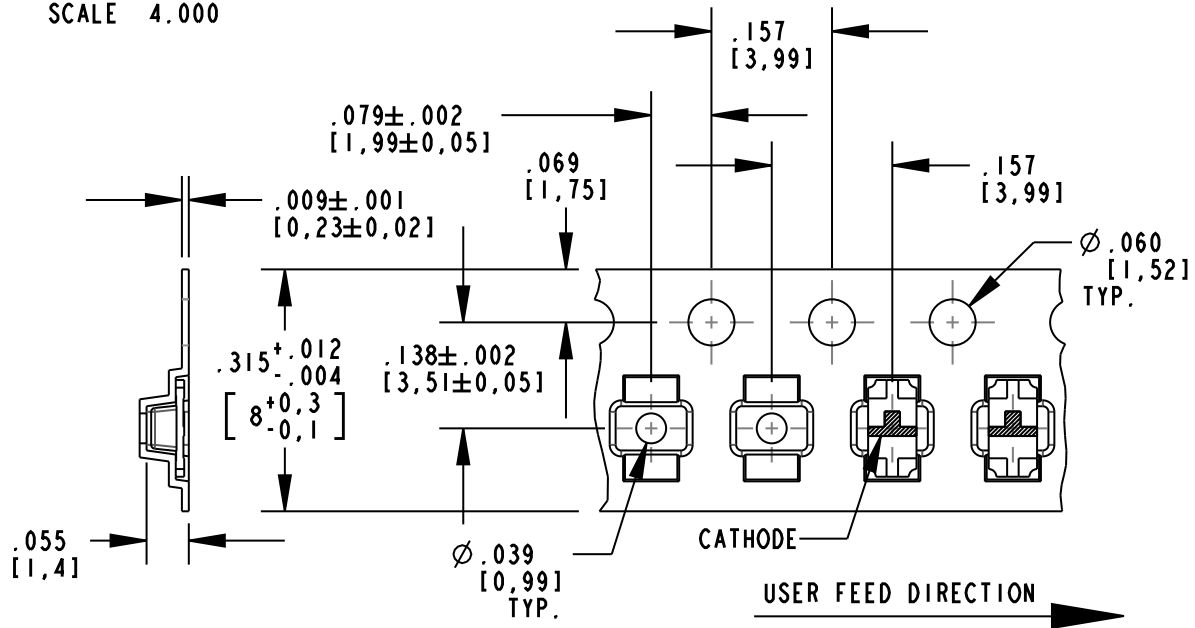


| REV | ECN NO | REVISIONS | DRN | CKD | APP | DATE |
|-----|--------|-------------|-----|-----|-----|--------|
| A | | NEW RELEASE | AJF | KLJ | NO | 1-3-11 |

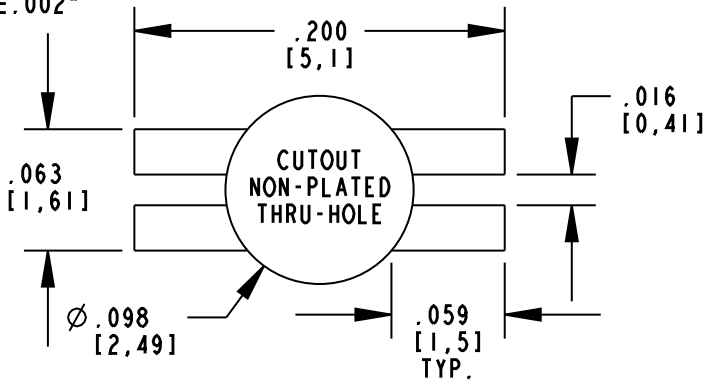


SCALE 4.000



TAPING SPECIFICATIONS

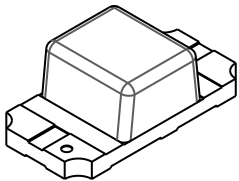
SCALE 10.000
TOLERANCES: ±.002"



RECOMMENDED SOLDER PAD LAYOUT

RoHS COMPLIANT 597-7783-60XF

Part Numbers with the "F" suffix ending are RoHS Compliant.
For example: 597-7783-602F
Reel and bag packaging are marked with "RoHS Compliant" label or equivalent markings. These parts can be used with RoHS reflow profile. Parts can be wave soldered, dip soldered or hand soldered using typical lead-free soldering process with max 260°C temp. for 5 sec.



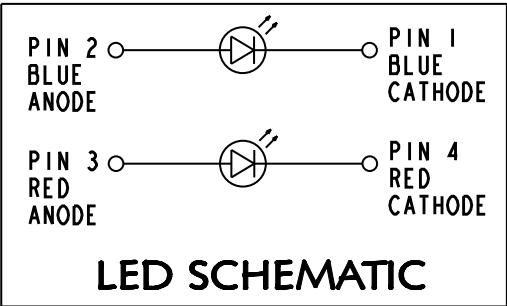
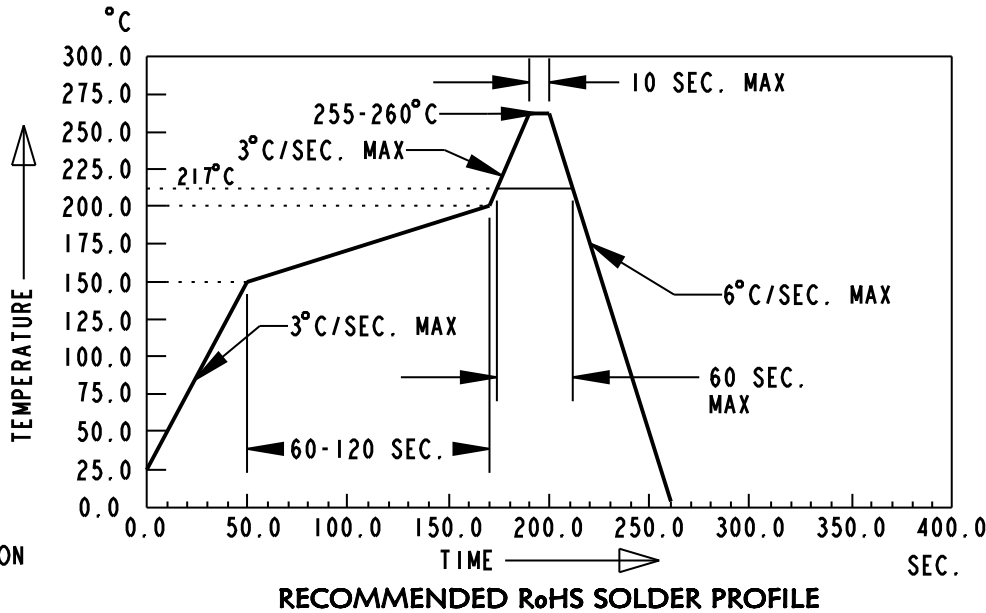
SCALE 10.000

NOTES:

- DIALIGHT PART NUMBERS: 597-7783-602F & 597-7783-607F.
- ...602F SUFFIX MEANS 20 PCS ON A SAMPLE STRIP.
...607F SUFFIX MEANS PARTS PACKAGED ON 7" DIA. REEL, 3,000 PCS/REEL, ACCORDING TO EIA STD 481-1-A SPECIFICATION (CATHODE TOWARDS SPROCKET).
- LED COLORS: InGaN BLUE
AlInGaP RED
- LED HAS A MOISTURE SENSITIVITY LEVEL OF 3.
- TAPE AND REEL PRODUCTS MAY REQUIRE RE-TAPING AFTER 12 MONTHS.
- PIN NUMBERS ARE FOR REFERENCE ONLY, DESIGNATION NON-EXISTENT ON PART.
- THIS ASSEMBLY CONTAINS ELECTROSTATIC DISCHARGE SENSITIVE DEVICES (ESDS). MAINTAIN ALL PRECAUTIONARY MEASURES DURING ASSEMBLY, HANDLING AND STORAGE IN ACCORDANCE WITH IPC-A-610.

| OPERATING CHARACTERISTICS AT 25°C AMBIENT | | | | | | |
|---|-------|------|------|------|--------|------------------------|
| LED CHARACTERISTICS | COLOR | MIN. | TYP. | MAX. | UNITS | TEST CONDITIONS |
| LUMINOUS INTENSITY | BLUE | 28 | 45 | 180 | mcd | I _f = 20 mA |
| | RED | 28 | 45 | 112 | | |
| PEAK WAVELENGTH | BLUE | | 468 | | nm | |
| | RED | | 639 | | | |
| DOMINANT WAVELENGTH | BLUE | | 470 | | nm | |
| | RED | | 631 | | | |
| FORWARD VOLTAGE | BLUE | | 3.3 | 3.8 | V | I _f = 20 mA |
| | RED | | 2.0 | 2.4 | | |
| REVERSE CURRENT | ALL | | | 10 | μA | V _r = 5 V |
| VIEWING ANGLE | ALL | | 130 | | DEGREE | |

| ABSOLUTE MAXIMUM RATINGS AT 25°C AMBIENT | | | |
|---|-------------|-----|-------|
| POWER DISSIPATION | 76 | 75 | mW |
| PEAK FORWARD CURRENT (1/10 DUTY CYCLE, 0.1ms PULSE WIDTH) | 100 | 80 | mA |
| CONTINUOUS FORWARD CURRENT | 20 | 30 | mA |
| LINEAR DERATING FROM 25°C | 0.27 | 0.4 | mA/°C |
| REVERSE VOLTAGE (CAN NOT BE CONTINUOUSLY OPERATED) | 5 | | V |
| REFLOW SOLDERING TEMPERATURE FOR 10 SEC. | 260 | | °C |
| OPERATING TEMPERATURE | -20 TO +80 | | °C |
| STORAGE TEMPERATURE | -30 TO +100 | | °C |



ATTENTION:
OBSERVE PRECAUTIONS FOR
HANDLING ELECTROSTATIC
SENSITIVE DEVICES

| | | |
|---|--|---------------|
| THIS DRAWING AND THE CONTENTS HEREIN ARE CONFIDENTIAL AND THE SOLE PROPERTY OF DIALIGHT. REPRODUCTION OF THIS DRAWING OR CONSTRUCTION OF ANY PARTS WITHIN THIS DRAWING ARE FORBIDDEN WITHOUT THE WRITTEN CONSENT OF DIALIGHT. | | |
| SCALE: 18.000 ALL DIM'S IN: INCHES (MM) | DRAWING NUMBER C-17898 | REV A |
| TOLERANCES: UNLESS OTHERWISE SPECIFIED FRACTIONS: ±1/64 DECIMALS (.XX): ±.01 DECIMALS (.XXX): ±.004 | TITLE RED/BLUE BI-COLOR SMT LED REVERSE MOUNT | |
| ANGLES: ±1° | MATERIAL - | |
| FINISH: - | Dialight 1501 ROUTE 34 SOUTH FARMINGDALE, NJ 07727 | |
| FSCM 83330 | SHEET 1 OF 1 | FAMILY TABLE: |

Mouser Electronics

Authorized Distributor

Click to View Pricing, Inventory, Delivery & Lifecycle Information:

Dialight:

597-7783-607F