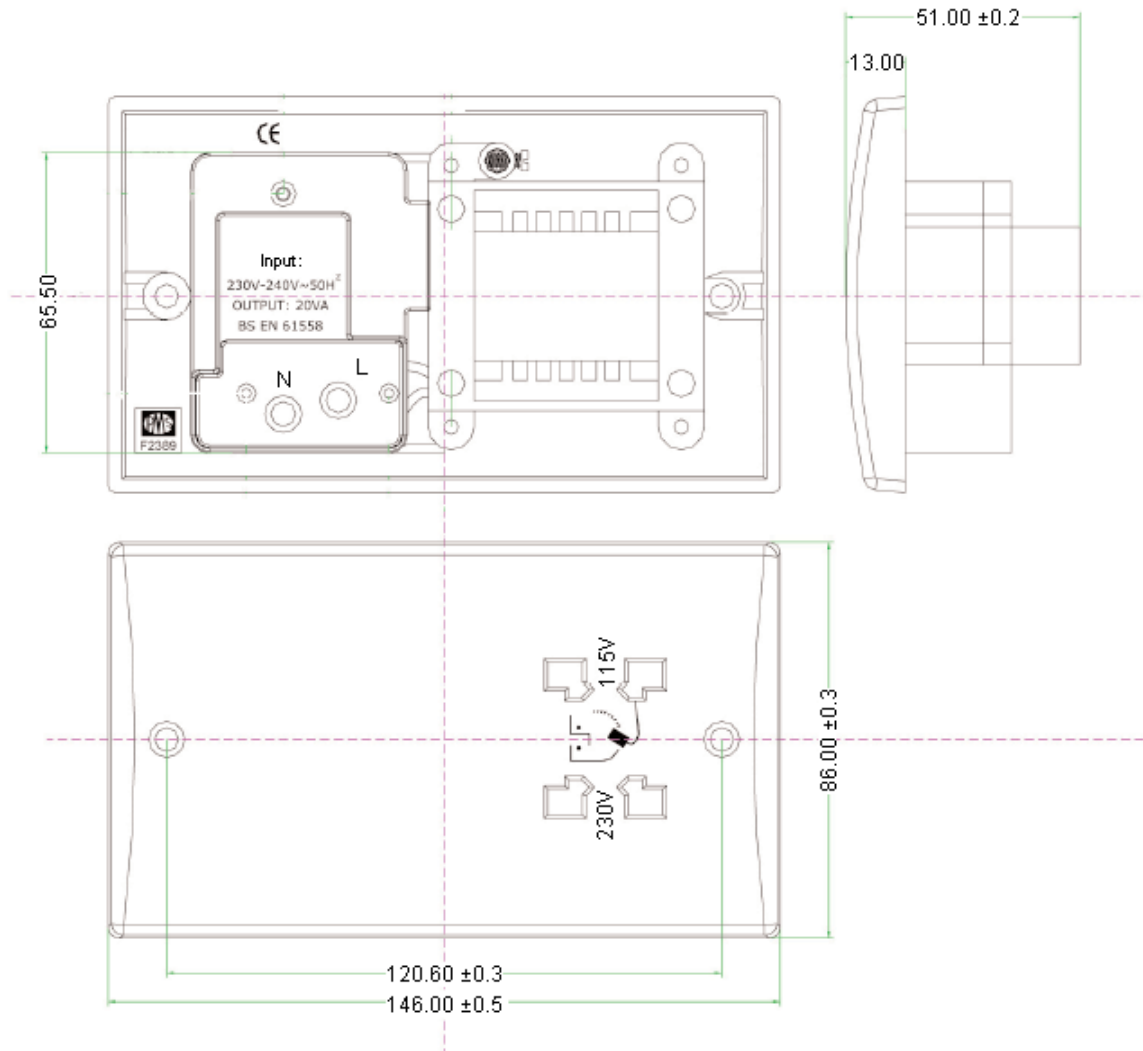


PART NO.

F2389

REVISIONS

ECN #	REV	DESCRIPTION	DRAWN	DATE	CHECKD	DATE	APPRVD	DATE
-	A	RELEASED	Veena	28/10/10	Jagan	28/10/10	Farnell	11/11/10



Dimensions : Millimetres

This data sheet and its contents (the "Information") belong to the Premier Farnell Group (the "Group") or are licensed to it. No licence is granted for the use of it other than for information purposes in connection with the products to which it relates. No licence of any intellectual property rights is granted. The Information is subject to change without notice and replaces all data sheets previously supplied. The Information supplied is believed to be accurate but the Group assumes no responsibility for its accuracy or completeness, any error in or omission from it or for any use made of it. Users of this data sheet should check for themselves the information and the suitability of the products for their purpose and not make any assumptions based on information included or omitted. Liability for loss or damage resulting from any reliance on the Information or use of it (including liability resulting from negligence or where the Group was aware of the possibility of such loss or damage arising) is excluded. This will not operate to limit or restrict the Group's liability for death or personal injury resulting from its negligence. Pro-Elec is the registered trademark of the Group. © Premier Farnell plc 2010.

TOLERANCES:

UNLESS OTHERWISE SPECIFIED, DIMENSIONS ARE FOR REFERENCE PURPOSES ONLY.

DRAWN BY:

Veena

DATE:

28/10/10

CHECKED BY:

Jagan

DATE:

28/10/10

APPROVED BY:

Farnell

DATE:

11/11/10

DRAWING TITLE:

XXX

SIZE
A

DWG NO.

XXX

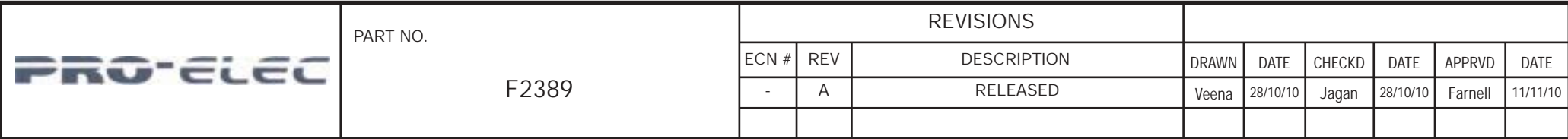
ELECTRONIC FILE
drawing of F2389_DWG

REV
A

SCALE: NTS

U.O.M.: mm

SHEET: 1 OF 2



Description	Part Number
Socket, Shaver	F2389

<http://www.cpc.co.uk>

This data sheet and its contents (the "Information") belong to the Premier Farnell Group (the "Group") or are licensed to it. No licence is granted for the use of it other than for information purposes in connection with the products to which it relates. No licence of any intellectual property rights is granted. The Information is subject to change without notice and replaces all data sheets previously supplied. The Information supplied is provided "as is" without any warranty, express or implied, of accuracy, completeness, any error in or omission from it or for any use made of it. Users of this data sheet should check for themselves the Information and the suitability of the products for their purpose and not make any assumptions based on information included or omitted. Liability for loss or damage resulting from any reliance on the Information or use of it including liability for any negligence is excluded. The Group was aware of the position and such loss or damage arising is excluded. This warranty does not limit or restrict the Group's liability for death or personal injury resulting from its negligence. Pro-Elc is the registered trademark of the Group. © Premier Farnell plc 2010.

UNLESS OTHERWISE
SPECIFIED,
DIMENSIONS ARE
FOR REFERENCE
PURPOSES ONLY.

Farnell

DATE: _____

XXX

XXX

ELECTRONIC FILE
Drawing of dF2389_DWG

REV
A

SCALE: NTS

U.O.M.: mm

SHEET: 2 OF 2