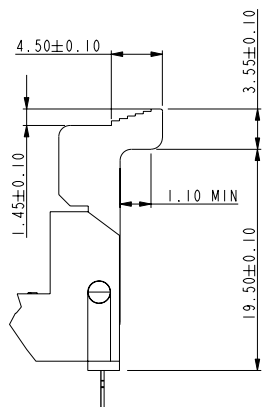
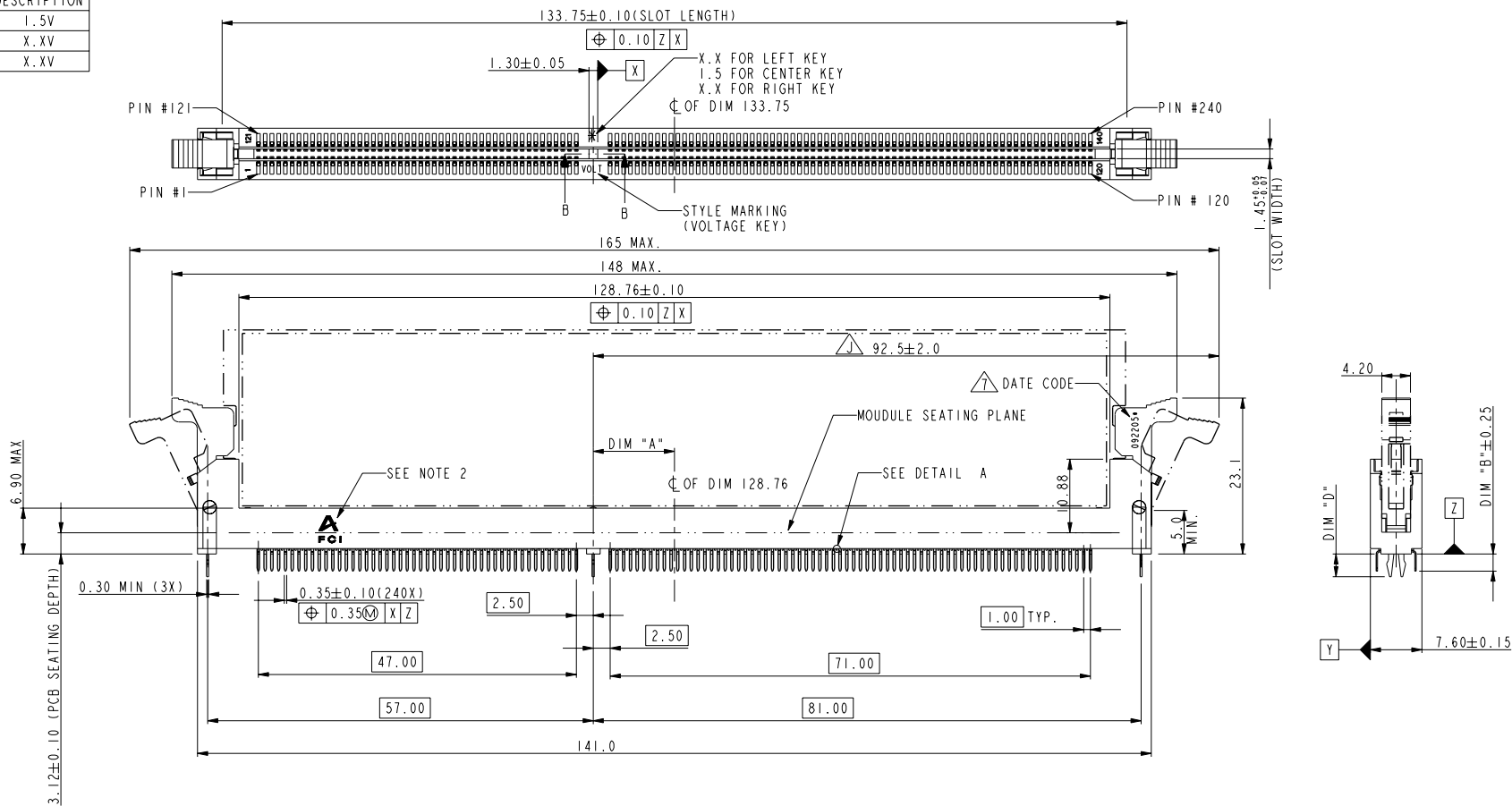
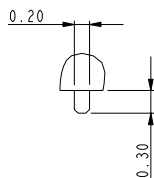


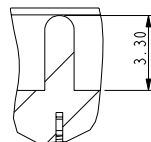
PART NO.	DIM "A"	DESCRIPTION
10068597-1****	12.00	1.5V
10068597-2****	11.00	X.XV
10068597-3****	13.00	X.XV



SCALE 1.500


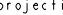




DETAIL A  
SCALE 10.000



SECTION B-B  
SCALE 3.000

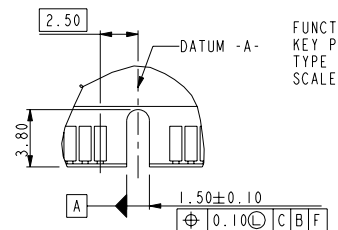
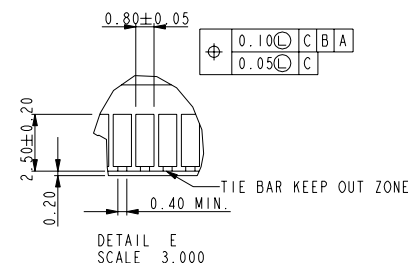
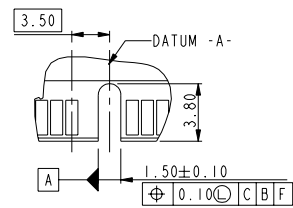
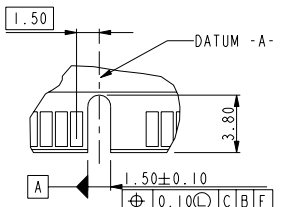
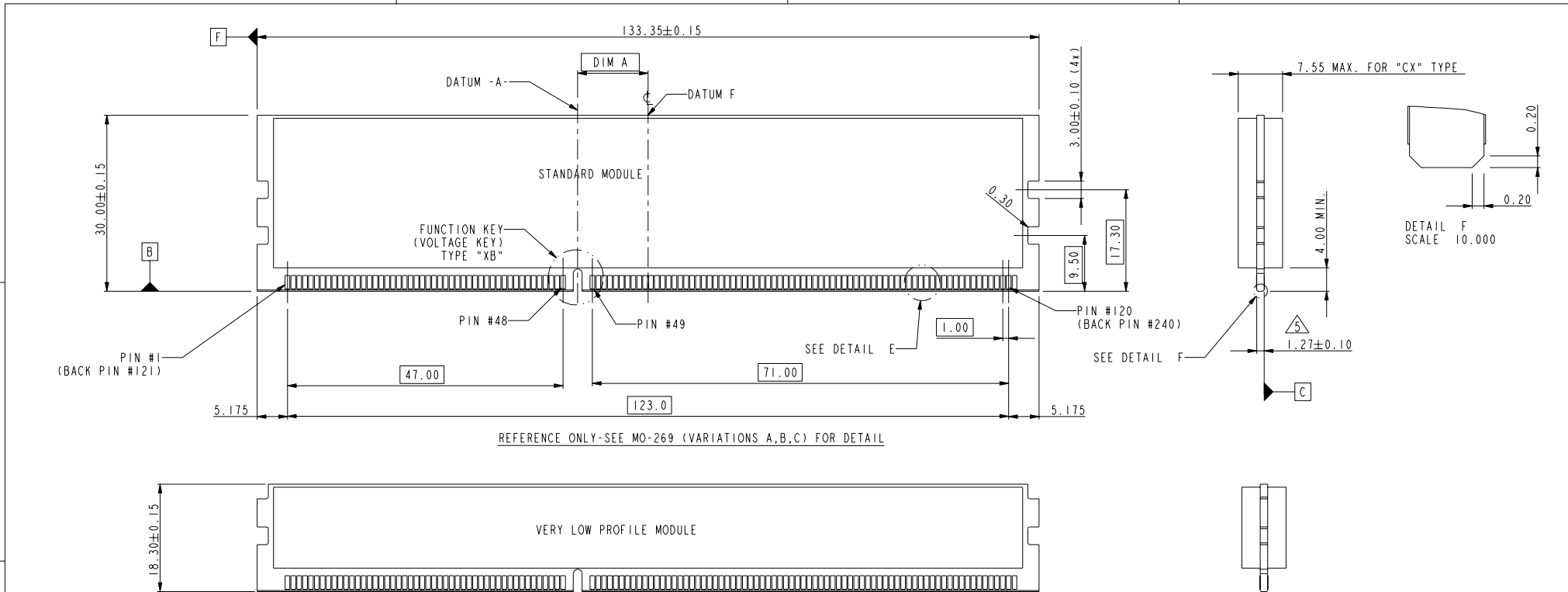
rev	ecn no	dr	date
H	DG08-0359	B L	12/25/08
J	DG09-0174	B L	06/01/08
K	DG09-0369	B L	11/25/09
L	N10-0025	R.B	04/16/2010
F	DG08-0065	J W	03/19/08
G	DG08-0172	B L	07/23/08

www.fciconnect.com			surface - 		tolerance std		projection 							
			TOLERANCES UNLESS OTHERWISE SPECIFIED											
Dr	CHARLIE S	04/06/06	ANGULAR		LINEAR	0.X	± .38	size	A4	Scale				
Eng	CAHRLIE S	04/06/06				0.XX	± .25			0.500				
Chr	BEER FU	04/06/06	0° ± 2°	0.XXX		± .13	ECN			N10-0025				
Appr	JOSEPH HSIA	04/06/06	Product family					-	Spec ref			*		
			title					DDRIII 240P V/T METAL CLIP ASS'Y		dwg no		10068597	Rev	L
			catalog no					-		CUSTOMER		sheet 1 of 4		

dwg no	10068597	Rev.	L
--------	----------	------	---



Copyright FCI.



TYPE "XA"	X.X VOLTAGE
TYPE "XC"	X.X VOLTAGE
TYPE "XB"	1.5 VOLTAGE
SUB KEY POS #1	DESCRIPTION

REV F - 2006-04-17

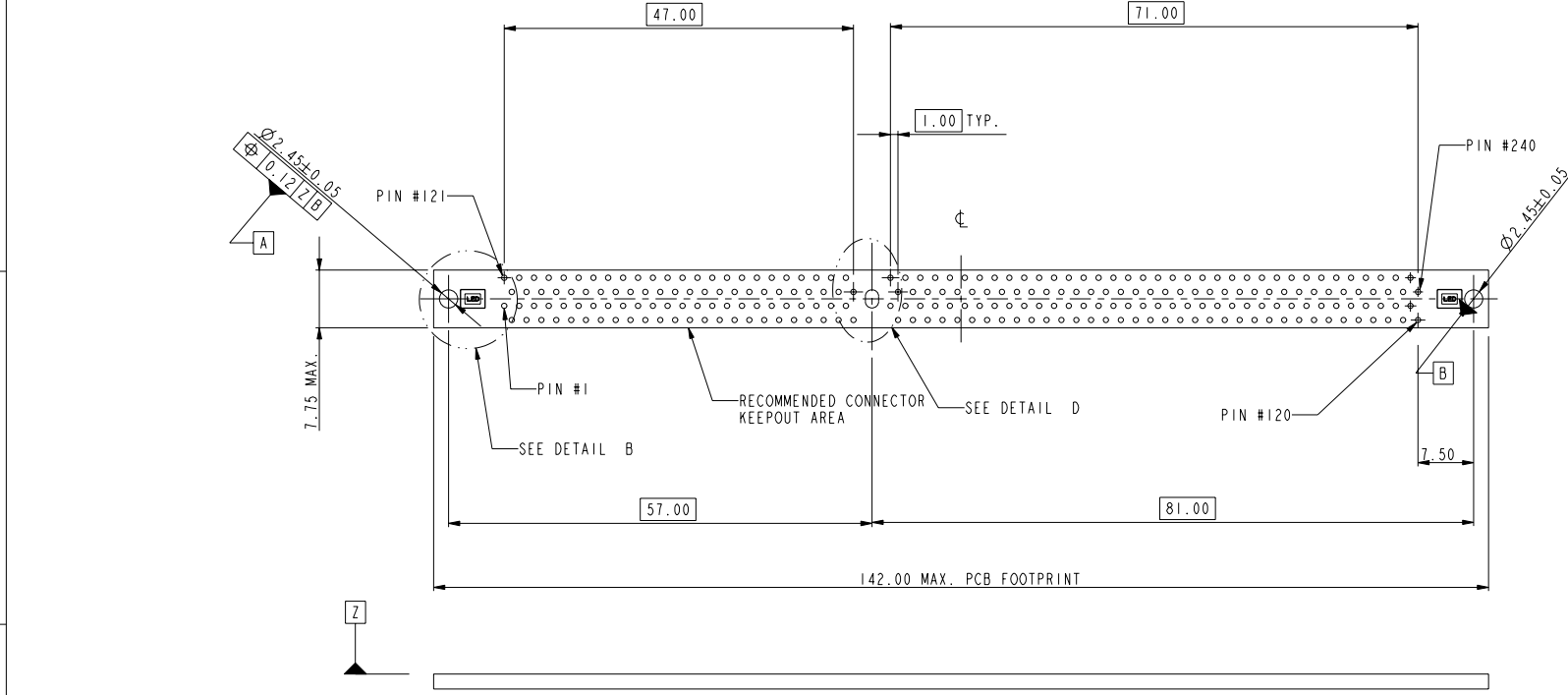
tolerance unless otherwise specified	
linear	.X ± .38
	.XX ± .25
	.XXX ± .13
angles	0° ± 2°

	title	DDRIII 240P V/T METAL CLIP ASS'Y	dwg no	10068597	Rev.	L
	catalog no	-	CUSTOMER	sheet 2 of 4		

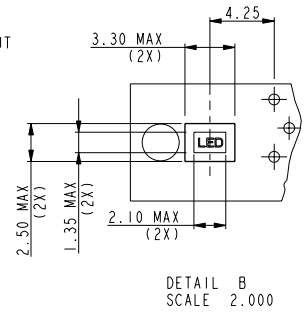
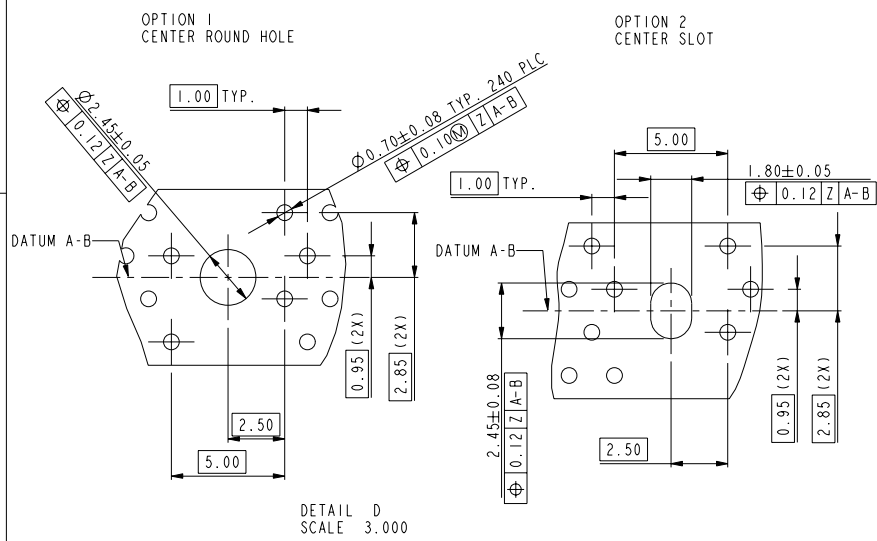


Copyright FCI.

REV F - 2006-04-17



RECOMMENDED CIRCUIT BOARD HOLE LAYOUT



tolerance unless otherwise specified	
linear	.X ± .38
	.XX ± .25
	.XXX ± .13
angles	0° ± 2°

	title	DDRIII 240P V/T METAL CLIP ASS'Y	dwg no	10068597	Rev.	L
	catalog no	-	CUSTOMER	sheet 3 of 4		



Copyright FCI.

#### NOTES:

1. MATERIAL:  
HOUSING: HIGH PERFORMANCE RESINS, GLASS FILLED UL94V-0 RATED.  
EJECTOR: HIGH PERFORMANCE RESINS, GLASS FILLED UL94V-0 RATED.  
TERMINAL: COPPER ALLOY.  
METAL CLIP: COPPER ALLOY.
2. FCI LOGO TO BE APPROXIMATELY LOCATED AS SHOWN ON PRINT.
3. PRODUCT SPECIFICATION: GS-12-368.
4. PACKAGING SPECIFICATION: GS-14-899.
5. CARD THICKNESS APPLIES ACROSS TABS AND INCLUDES PLATING AND/OR METALIZATION.
6. LEADING EDGE OF CONTACT PADS SPECIFIED BY THE KEEP OUT ZONE SHALL BE FREE OF BURRS AND EXTERNAL TIE BARS. FOR OPTIMUM PERFORMANCE, THE TIE BAR IS TO BE ON AN INTERNAL LAYER SO THAT THE REMNANT CANNOT CAUSE CONTACT DAMAGE.
7. THE DATE CODE IS SHOWN "MMDDYY\*", "\*" MEANS PRODUCTION LINE CODE.
8. SOCKET IS COMPLIANT TO JEDEC SO-007 AND ACCEPTS JEDEC MODULE MO-269, VARIATIONS AA THRU FC.
9. THIS PRODUCT MEETS EUROPEAN UNION DIRECTIVES AND OTHER COUNTRY REGULATIONS AS DESCRIBED IN GS-22-008.
10. THE HOUSING WILL WITH STAND EXPOSURE TO 260°C PEAK TEMPERATURE FOR 10 SECONDS IN A WAVE SOLDER APPLICATION.
11. THE CLEAR LATCH CAN WITHSTAND MAX 174°C EXPOSURE TEMPERATURE.

10068597 - □ □ □ □

#### STYLE : MECHANICAL KEYING

- 1 : 1.5 VOLT. W/ CENTER KEY "XB"  
2 : X.X VOLT. W/ LEFT KEY "XA"  
3 : X.X VOLT. W/ RIGHT KEY "XC"

CODE	METAL CLIP	TAIL LENGTH
	DIM "D"	DIM "B"
11	3.05	2.67
22	3.56	3.18

#### PLATING

CODE	CONTACT	SOLDERTAIL	UNDERPLATE
2	15u" (0.38um) MIN. GOLD	100u" (2.54um) MIN. TIN/LEAD	50u" (1.27um) MIN. NICKEL OVERALL
3	30u" (0.76um) MIN. GOLD		
4	3u" (0.07um) MIN. GOLD	100u" (2.54um) MIN. 100% TIN	50u" (1.27um) MIN. NICKEL OVERALL
5LF	20u" (0.508um) MIN. GOLD		
7LF	15u" (0.38um) MIN. GOLD		
8LF	30u" (0.76um) MIN. GOLD		
9LF	3u" (0.07um) MIN. GOLD		

#### COLOR OF HOUSING AND EJECTOR

- 0 : BLACK HOUSING + IVORY EJECTOR  
1 : BLUE HOUSING + IVORY EJECTOR  
2 : BLACK HOUSING + BLACK EJECTOR  
3 : BLACK HOUSING + CLEAR EJECTOR  
4 : BLUE HOUSING + CLEAR EJECTOR  
5 : IVORY HOUSING + CLEAR EJECTOR  
6 : BLACK HOUSING + BLUE (2945C) EJECTOR  
7 : IVORY HOUSING + IVORY EJECTOR  
8 : BLACK HOUSING + GREEN (375C) EJECTOR  
9 : IVORY HOUSING + BLACK EJECTOR  
C : BLUE HOUSING + BLACK EJECTOR

tolerance unless otherwise specified	
linear	.X ± .38
	.XX ± .25
	.XXX ± .13
angles	0° ± 2°



title DDRIII 240P V/T METAL CLIP ASS'Y

catalog no

dwg no

10068597

Rev.  
L

CUSTOMER

sheet 4 of 4