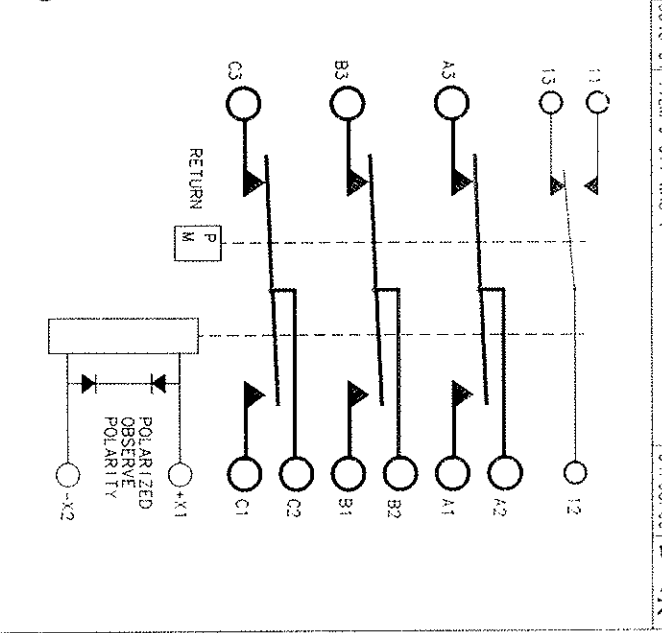
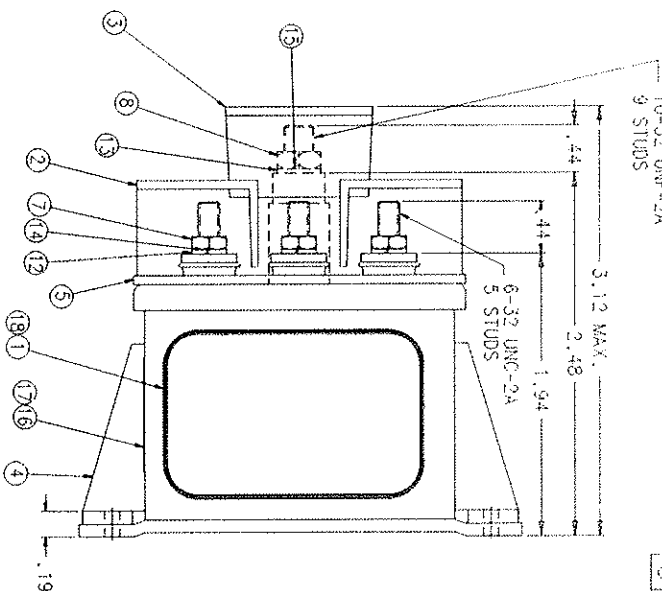
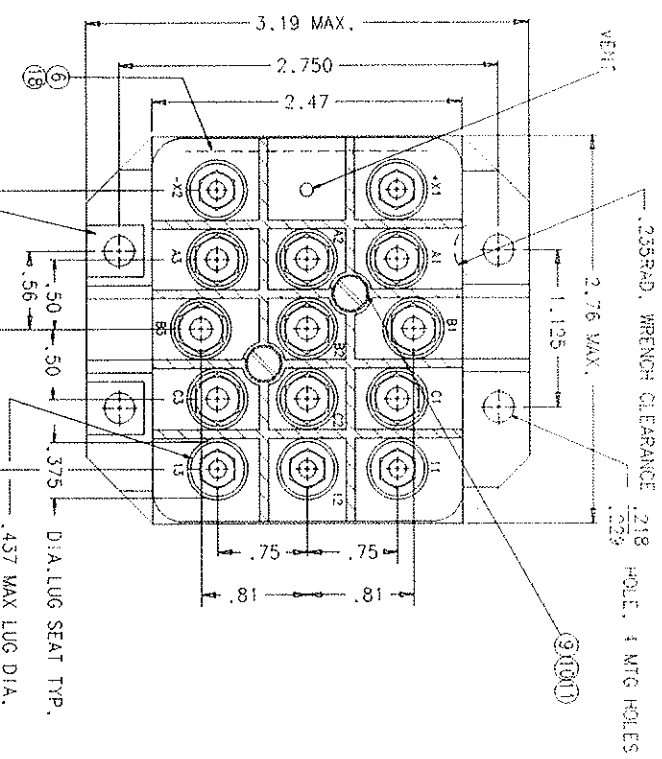


REVISIONS		RELEASED	DATE	APPROVED
REV	DESCRIPTION			
A	400+8 3.12 MAX WAS 3.17 MAX		99/08/02	RS
B	41936 REMOVED PRELIMINARY ADDED RELEASE DATE		00/03/15	RS
C	0645-04 ITEM 9 QTY WAS 1		04/08/09	5mK



FIND NO	QTY	PART OR IDENTIFYING NO	OVERLAY	WARNING PLATE	NAME/CLATURE OR DESCRIPTION	FSOA NO	DRAWING OR SPECIFICATION	MATERIAL OR NOTE	FIND NO	QTY	PART OR IDENTIFYING NO	OVERLAY	WARNING PLATE	NAME/CLATURE OR DESCRIPTION	FSOA NO	DRAWING OR SPECIFICATION	MATERIAL OR NOTE
16	1	25695-001			PLATE - WARNING				16	1	25695-001			PLATE - WARNING			
15	9	51702-851			WASHER-7/16 X 13/64 X .032				15	9	51702-851			WASHER-7/16 X 13/64 X .032			FLAT STEEL
14	5	51702-211			WASHER-3/8 X 9/64 X .032				14	5	51702-211			WASHER-3/8 X 9/64 X .032			FLAT STEEL
13	9	51810-031			WASHER LOCK - #10 SPLIT				13	9	51810-031			WASHER LOCK - #10 SPLIT			STEEL
12	5	51806-021			WASHER LOCK - #6 SPLIT				12	5	51806-021			WASHER LOCK - #6 SPLIT			STEEL
11	2	51805-011			WASHER - 5/16 X .015				11	2	51805-011			WASHER - 5/16 X .015			NYLAR
10	2	51701-180			WASHER - 5/16 X 11/8 RD. HD.				10	2	51701-180			WASHER - 5/16 X 11/8 RD. HD.			STEEL
9	2	51205-391			SCREW - 5/16 X 1/8 HEX.				9	2	51205-391			SCREW - 5/16 X 1/8 HEX.			STEEL
8	9	50410-031			NUT - 10-32 X 3/8 X 1/8 HEX.				8	9	50410-031			NUT - 10-32 X 3/8 X 1/8 HEX.			STEEL
7	5	50406-071			NUT - 6-32 X 5/16 X 7/64 HEX.				7	5	50406-071			NUT - 6-32 X 5/16 X 7/64 HEX.			STEEL
6	1	31738-001			PLATE - BASE COVER				6	1	31738-001			PLATE - BASE COVER			
5	1	29376-001			PLATE - WIRING DIAGRAM				5	1	29376-001			PLATE - WIRING DIAGRAM			
4	1	29360-040			CONTACTOR ASSEMBLY - PRIMARY				4	1	29360-040			CONTACTOR ASSEMBLY - PRIMARY			
3	1	20115-001			SHIELD - TERMINAL TOP				3	1	20115-001			SHIELD - TERMINAL TOP			
2	1	20114-001			SHIELD - TERMINAL				2	1	20114-001			SHIELD - TERMINAL			
1	1	16043-001			PLATE - NAME				1	1	16043-001			PLATE - NAME			

18	2	39529-035	OVERLAY	WARNING PLATE					18	2	39529-035	OVERLAY	WARNING PLATE				
17	1	39529-006	OVERLAY	WARNING PLATE					17	1	39529-006	OVERLAY	WARNING PLATE				
16	1	39529-006	OVERLAY	WARNING PLATE					16	1	39529-006	OVERLAY	WARNING PLATE				
15	1	39529-006	OVERLAY	WARNING PLATE					15	1	39529-006	OVERLAY	WARNING PLATE				
14	1	39529-006	OVERLAY	WARNING PLATE					14	1	39529-006	OVERLAY	WARNING PLATE				
13	1	39529-006	OVERLAY	WARNING PLATE					13	1	39529-006	OVERLAY	WARNING PLATE				
12	1	39529-006	OVERLAY	WARNING PLATE					12	1	39529-006	OVERLAY	WARNING PLATE				
11	1	39529-006	OVERLAY	WARNING PLATE					11	1	39529-006	OVERLAY	WARNING PLATE				
10	1	39529-006	OVERLAY	WARNING PLATE					10	1	39529-006	OVERLAY	WARNING PLATE				
9	1	39529-006	OVERLAY	WARNING PLATE					9	1	39529-006	OVERLAY	WARNING PLATE				
8	1	39529-006	OVERLAY	WARNING PLATE					8	1	39529-006	OVERLAY	WARNING PLATE				
7	1	39529-006	OVERLAY	WARNING PLATE					7	1	39529-006	OVERLAY	WARNING PLATE				
6	1	39529-006	OVERLAY	WARNING PLATE					6	1	39529-006	OVERLAY	WARNING PLATE				
5	1	39529-006	OVERLAY	WARNING PLATE					5	1	39529-006	OVERLAY	WARNING PLATE				
4	1	39529-006	OVERLAY	WARNING PLATE					4	1	39529-006	OVERLAY	WARNING PLATE				
3	1	39529-006	OVERLAY	WARNING PLATE					3	1	39529-006	OVERLAY	WARNING PLATE				
2	1	39529-006	OVERLAY	WARNING PLATE					2	1	39529-006	OVERLAY	WARNING PLATE				
1	1	39529-006	OVERLAY	WARNING PLATE					1	1	39529-006	OVERLAY	WARNING PLATE				

UNLESS OTHERWISE SPECIFIED
DIMENSIONS ARE IN INCHES
TOLERANCES ON

2 PL DEC 13 PL DEC 13 ANGLES
1.03 1.010 1.14

DASH NEXT ASSY USED ON
APPROVAL

SCALE NONE SHEET 1 OF 3

DR BY: MES 10/03/20
CHK BY: RS 10/03/20
ENG BY: MES 10/03/20
MFG CC 10/03/20
SIZE CODE IDENT
C 74063

18 Horton Electronics, 175 N. Diamond Street, Waukegan, IL 60087

CONTACTOR-SPDT SIDESTABLE

50 AMP, 115/200 VAC, 400 HZ 093

DWG NO. D-7GR-3

REF TYCO P/N 0-1616036-4

REV. ECU		DESCRIPTION	DATE	APPROVED
B	41936	SEE SHEET 1	00/03/15	P.S.
C	0645-04	SEE SHEET 1	04/08/09	SMK

D-7GR-3

REVISIONS

RELEASED 06-03-16

NOTES:

1. THIS UNIT MEETS THE APPLICABLE PORTIONS OF MIL-R-6106.
2. MATERIAL DATA: TERMINAL BASE-BRASS, CASE ALUMINUM PLATE-BASE COVER ⑤ GLASS MELAMINE MIL-P-15037C, TERMINAL SHIELD ② & ③ NYLON 3001 MAIN TERMINAL STUDS-CA #175 BRY COPPER
3. SUITABLE FOR USE ON 50 AMP LOAD TRANSFER APPLICATIONS; 50,000 OPERATIONS AT 7 P.F.
4. TRANSFER OPEN CIRCUIT TIME 1.5MS MIN.
5. COIL TRANSIENT VOLTAGE LIMITED TO 45 VOLTS.

METALLIC BASE, GASKET SEALED (VENTED)

CONSTRUCTION
MAIN CONTACT
CONFIGURATION
VOLTAGE (NOMINAL)
CURRENT-RES.

IND.
MOTOR
OVERLOAD
RUPTURE

3PDT SIDESTABLE
115/208 VAC 400 HZ
50
50
30
30
400
400

AUXILIARY CONTACTS
CONFIGURATION
VOLTAGE (NOMINAL)
CURRENT - RESISTIVE

IND.
LAMP

SPDT
28 VDC 115 VAC 400 HZ
3 AMP 3 AMP
3 AMP 3 AMP
1 AMP 1 AMP

LIFE ELECTRICAL
LIFE MECHANICAL

50,000 CYCLES MIN.
100,000 CYCLES MIN.

COIL DATA

DUTY CYCLE
NOM. COIL VOLTAGE
PICKUP MAX.
DROPOUT VOLTAGE
COIL RESISTANCE AT 25°C
COIL CURRENT AT 25°C

CONTINUOUS
28 VDC
15 VDC AT 25°C
2.5 VOLTS TO 6.5 VOLTS AT 25°C
125 OHMS ±20%
.280 AMPS MAX. AT 28 VDC

ENVIRONMENTAL DATA

AMBIENT TEMPERATURE
VIBRATION: SINE

-55°C TO +71°C
0.036 INCH D A FROM 10 TO 55 HZ
5 G'S FROM 55 TO 500 HZ

ACCELERATION
SHOCK
ALTITUDE
MAX. WEIGHT

10 G'S
25 G'S MAX FOR 6 TO 9 MILLISECONDS
50,000 FEET MAX
1 LB, 2 OZ

		UNLESS OTHERWISE SPECIFIED DIMENSIONS ARE IN INCHES TOLERANCES ARE		REF. GRUBMAN		Tyco Electronics	
		3 PL DEC.3 PL DEC. 1 INCHES		GR835VE		125 HORTON CT, P.O. BOX 175 N. DIAMOND STREET, WANSFLEO, OHIO 44092	
		MATERIAL		DP B7 MES 00/03/20		CONTACTOR-3PDT SIDESTABLE	
				CHK B7 PS 00/03/20		50 AMP, 115/200 VAC, 400 HZ 093	
				ENGP MES 00/03/20			
				TYPE G CC 00/03/20			
				SIZE CODE IDENT			
				C 74063		D-7GR-3	
				SCALE NOTE SHEET 2 OF 2		PEF TYCO P/N 0-1616036-4	

Mouser Electronics

Authorized Distributor

Click to View Pricing, Inventory, Delivery & Lifecycle Information:

[TE Connectivity:](#)

[D7GR3](#)