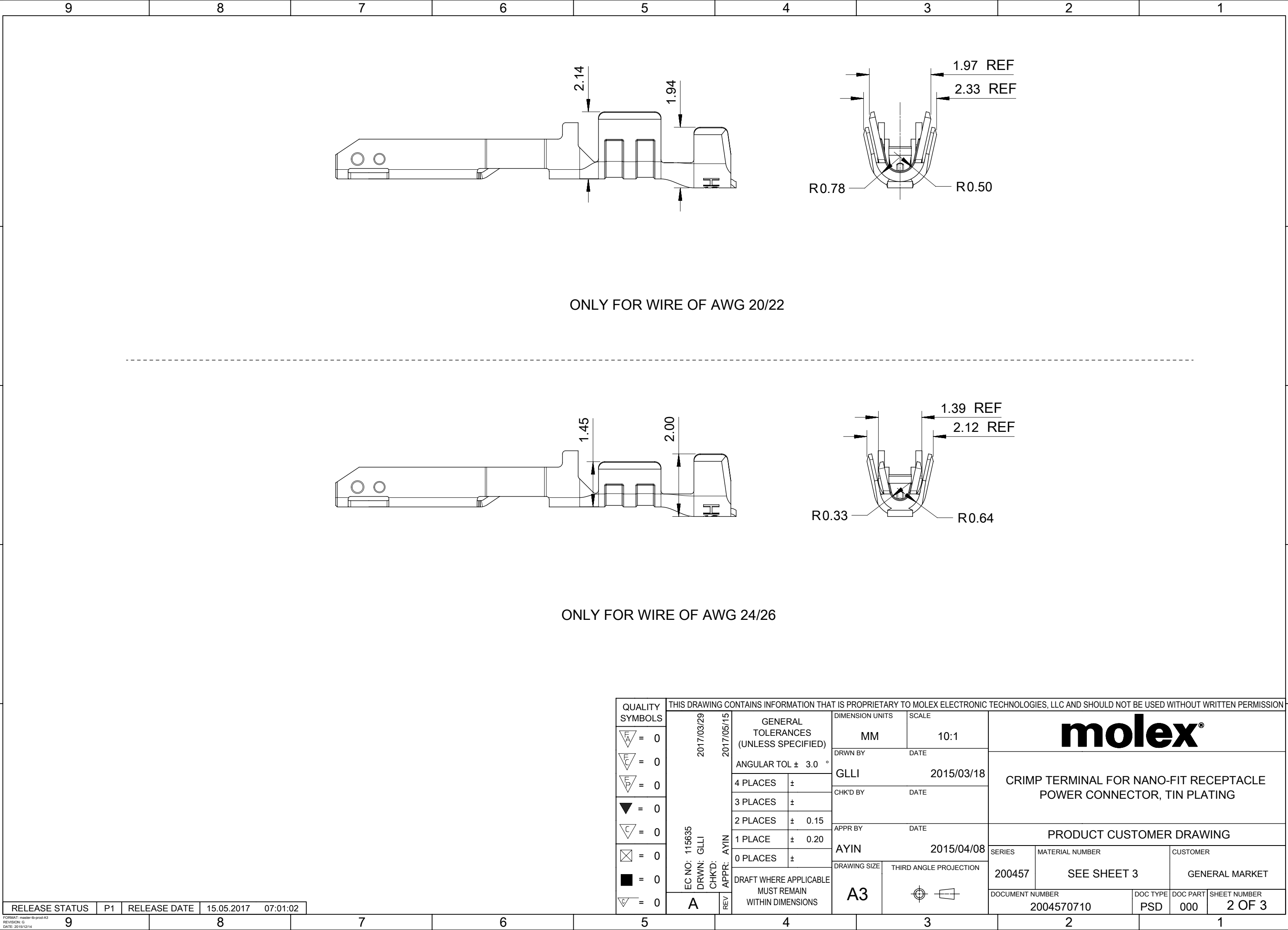
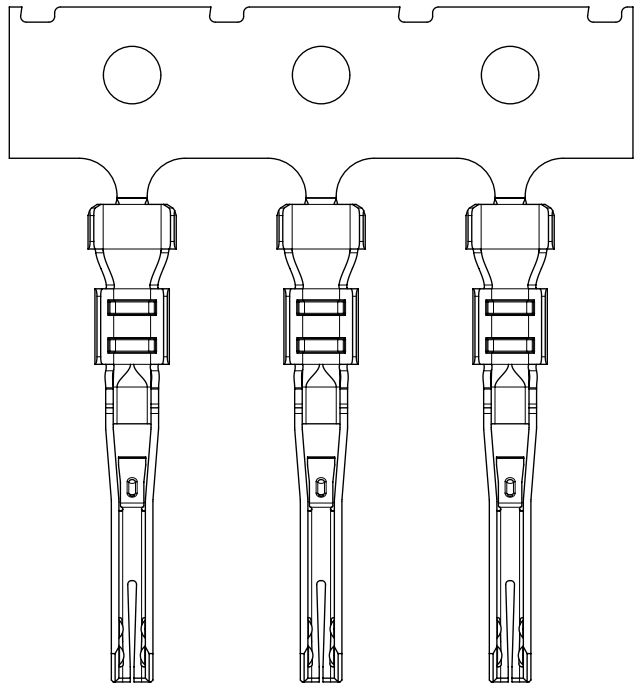
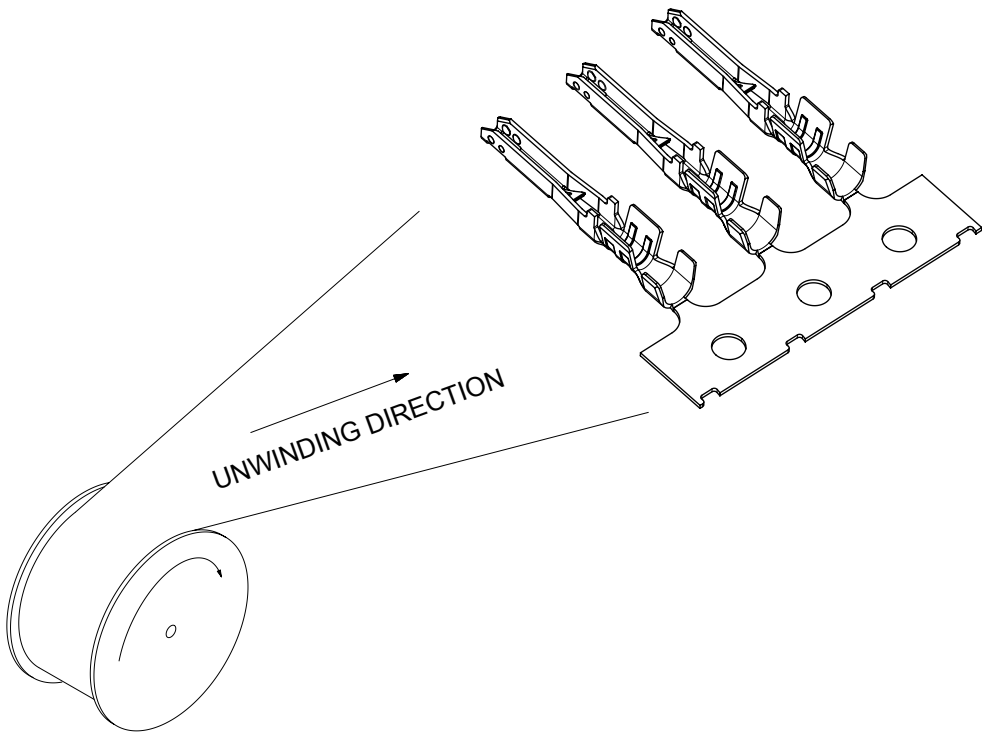


- NOTES:
- 1. MATERIAL: HIGH CONDUCTIVITY COPPER ALLOY.
 - 2. PLATING FINISH SEE CHART IN SHEET 3.
 - 3. PRODUCT SPECIFICATION: PS-105300-100.
 - 4. PACKAGE SPECIFICATION: PK-105300-100.
 - 5. THE TERMINAL IS LUBRICATED.
 - 6. THE COMPONENT COMPLIANT TO RoHS DIRECTIVE 2011/65/EU AND ELV DIRECTIVE 2000/53/EC.
 - 7. PRODUCT APPLY TO RECEPTACLE HOUSING OF 105307-**** AND 105308-****.
 - 8. PARTS CONFORM TO CLASS 'B' REQUIREMENTS OF COSMETIC SPECIFICATION PS-45499-002.
 - 9. APPLICATION SPECIFICATION: AS-105300-100.
 - 10. RECOMMENDED INSULATOR:
20AWG WIRE, OD 1.60MM MAX.
24AWG WIRE, OD 1.30MM MAX.

THIS DRAWING CONTAINS INFORMATION THAT IS PROPRIETARY TO MOLEX ELECTRONIC TECHNOLOGIES, LLC AND SHOULD NOT BE USED WITHOUT WRITTEN PERMISSION																
QUALITY SYMBOLS		2017/03/29 														

RELEASE STATUS		RELEASE DATE	07:01:02
----------------	--	--------------	----------





PART NUMBER	WIRE SIZE(AWG)
105300-1100	24/26
105300-2100	20/22

PLATING SPECIFICATION
REFLOW MATTE TIN 2.5 MICRONS MINIMUM OVERALL, UNDER NICKEL PLATING 1.25 MICRONS MINIMUM OVERALL.

THIS DRAWING CONTAINS INFORMATION THAT IS PROPRIETARY TO MOLEX ELECTRONIC TECHNOLOGIES, LLC AND SHOULD NOT BE USED WITHOUT WRITTEN PERMISSION													
QUALITY SYMBOLS		2017/03/29 2017/05/15 EC NO: 115635 DRWN: GLLI CHK'D: REV APPR: AYIN	GENERAL TOLERANCES (UNLESS SPECIFIED) ANGULAR TOL ± 3.0 ° 4 PLACES ± 3 PLACES ± 2 PLACES ± 0.15 1 PLACE ± 0.20 0 PLACES ± DRAFT WHERE APPLICABLE MUST REMAIN WITHIN DIMENSIONS	DIMENSION UNITS		SCALE		<div>molex®</div> CRIMP TERMINAL FOR NANO-FIT RECEPTACLE POWER CONNECTOR, TIN PLATING					
				MM		5:1							
<div><div>F_A</div>= 0</div>				DRWN BY GLLI				DATE 2015/03/18		PRODUCT CUSTOMER DRAWING			
<div><div>F_E</div>= 0</div>				CHK'D BY				DATE					
<div><div>F_P</div>= 0</div>				APPR BY AYIN				DATE 2015/04/08					
<div><div>▽</div>= 0</div>				DRAWING SIZE		THIRD ANGLE PROJECTION		SERIES		MATERIAL NUMBER		CUSTOMER	
<div><div>C</div>= 0</div>				A3		<div><div><div></div></div></div>		200457		SEE CHART		GENERAL MARKET	
<div><div>⊠</div>= 0</div>				DRAFT WHERE APPLICABLE MUST REMAIN WITHIN DIMENSIONS				DOCUMENT NUMBER		DOC TYPE		DOC PART	
<div><div>■</div>= 0</div>								2004570710		PSD		000	
<div><div>▽</div>= 0</div>				A		REV						SHEET NUMBER	
										3 OF 3			