

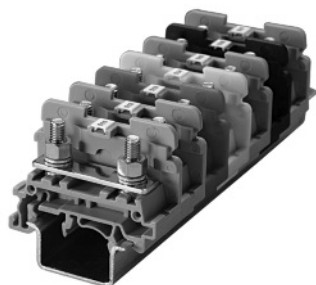
Stud Type Block

Altech DIN rail mounting Stud Type Terminal Blocks are preferred for the connections that are subjected to very severe vibrations.

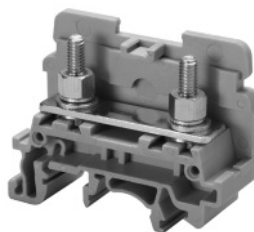
The wire is crimped to a ring / fork type lug and is screwed on to the flat current bar in terminal. The range includes terminal blocks for wires of size 22-4 AWG.

Jumpering can be achieved with the aid of external jumpers. The jumpers are insulated to make them shock proof. The terminal blocks have marker holding recess to accommodate MT type marking tags.

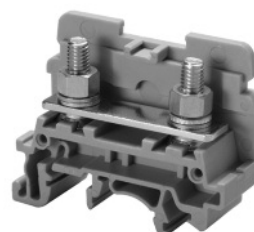
It is recommended to use protective covers in transparent plastic because assemblies of these terminals blocks are not fully covered.







CSTSN4U



CSTSN5U




Terminal Width	17 mm			17 mm		
Height x Length	39.5 x 50 mm			39.5 x 50 mm		
Stripping Length	12 mm			12 mm		
Insulation Material	Polyamide 6.6			Polyamide 6.6		
Type of Connection	2 screw connection for M4 ring/fork lugs			2 screw connection for M5 ring/fork lugs		
Approvals						
Wire Range	22-6 AWG	1.5-10 sq.mm	22-6 AWG	22-4 AWG	1.5-16 sq.mm	22-4 AWG
Voltage Rating	600 V	800 V	600 V	600 V	800 V	600 V
Current Rating	65 A	57 A	65 A	80 A	76 A	80 A
Torque	14 lb-in	1.2 Nm	14 lb-in	17.5 lb-in	2.0 Nm	17.5 lb-in
Other Approvals						


Terminal Block


End Plate	
-----------	---

DIN Rail
for ordering information
refer to page 72

End Stop for ordering information refer to page 74	
--	---

Protective Cover for covering	 2 Terminal 3 Terminal
----------------------------------	--

Protective Cover in Length	 100 mm 200 mm 300 mm
-------------------------------	--

Insulated Removable Jumpers	 2 way 3 way 4 way
--------------------------------	---

Insulated Permanent Jumpers	 2 way 3 way 4 way
--------------------------------	---

Marking Tags (MT Type)	
------------------------	---

Cat. No.	Std. Pk.
CSTSN4U	100
EPCSTSN5U	50
CA702	50
CA802	50
CSTSPC1	100
CSTSPC1-1	100
CSTSPC1-2	10
CSTSPC1-3	10
CSTSPC1-4	10
CA514/1-2	100
CA514/1-3	50
CA514/1-4	50
CA514/3-2	100
CA514/3-3	50
CA514/3-4	50
MT2	100

Cat. No.	Std. Pk.
CSTSN5U	100
EPCSTSN5U	50
CA702	50
CA802	50
CSTSPC1	100
CSTSPC1-1	100
CSTSPC1-2	10
CSTSPC1-3	10
CSTSPC1-4	10
CA514/1-2	100
CA514/1-3	50
CA514/1-4	50
CA514/3-2	100
CA514/3-3	50
CA514/3-4	50
MT2	100

COLOR BLOCKS

(other than grey standard)

When ordering please add
color suffix to Cat. No.

Example: CTS2.5U-N/R

Color	Ordering Suffix
Red	R
Blue	BU
Black	BL
Orange	O
Green	G
Yellow	Y
White	W
Beige	BG
Dark Brown	DB